

WEBCAST AUCTION



Thursday, July 23 at 10am ET

INSPECTION: Wednesday, July 22, 9am–5pm ET, or by appointment

ASSET LOCATION: 3859 Roger B Chaffee Memorial Blvd SE Grand Rapids, MI 49458

HEAVY-DUTY CNC MACHINING, EDM, AND SUPPORT EQUIPMENT

Complete Contents from a Manufacturer that Specialized in the Custom Design and Production of Medium-to-Large Compression Molds, Plastic Injection Molds, Carbon Fiber Molds, and Die Cast Dies



2015 Linmax RG5-1625 Overhead Gantry Milling Machine



2017 Tarus GDTC510-6XRT CNC Deephole Gun Drilling Machine



2016 Makino EDNC 15 EDM

Featuring 5-Axis CNC Machining Capabilities, CNC Gantry Mills, CNC Gun Drills, EDMs, Tryout & Spotting Presses, CNC Horizontal Milling Machines, CNC Bridge Mills, CNC Vertical Machining Centers, and Additional Equipment

Place your bid on: **BidSpotter**

For Further Information Email: customerservice@maynards.com

Maynards
SINCE 1902

17177 N. Laurel Park Drive, Suite 236,
Livonia, MI 48152
248-569-9781 | maynards.com

Sale in conjunction with

**MIEDEMA'S
ORBITBID**

**PRESTIGE
AUCTIONS**



Parpas Diamond 30 Linear CNC Gantry Mill



Parpas Diamond 30 Linear CNC Gantry Mill



2015 Linmax RG5-1625 Overhead Gantry Milling Machine

CNC GANTRY MILLS

2014 Parpas Diamond 30 Linear Gantry Mill, 122" x 110" T-Slotted Table, 24000-RPM 5-Axis HSK 63 Spindle, Heidenhain CNC Control, 118" x 96" x 48" XYZ Travels, 24-Pos ATC

2013 Parpas Diamond 30 Linear Gantry Mill, 92.25" x 62.5" T-Slotted Table, 24,000-RPM 5-Axis HSK 63 Spindle, 88.6" x 59" x 48" XYZ Travels, 24-Pos ATC

2003 Parpas Diamond #2 Gantry Mill, 63" x 92" Table, 8,000-RPM 5-Axis HSK 63 Spindle, Selca Controls, 86" x 59" x 39" XYZ Travels, 44,000 Lb. Table Load

2000 Tarus HS0THB810 CNC Gantry Mill, 89" x 157" T-Slotted Table, 10,000-RPM Cat 50 Spindle, 118" x 98" x 50" XYZ Travels, Fidia C10 Control

2015 Linmax RG5-1625 Overhead Gantry Milling Machine, 98.4" x 62.9" T-Slotted Table, 24,000-RPM 5-Axis HSK 63 Spindle, Heidenhain iTNC530 CNC Control, 98.4" x 63" x 39.4" XYZ Travels, 30-Pos ATC, Blum Tool System



2017 Tarus GDTTC510-6XRT CNC Deephole Gun Drilling Machine



Tarus CNC Gun Drill

CNC GUN DRILLS

2017 Tarus GDTTC510-6XRT CNC Deephole Gun Drilling Machine, Mn-GDTTC510-6XRT, Tarus CNC Control, Travels: X= 130", Y= 60", Z= 60" Column In & Out, 2" Max. Drilling Diameter, Max Drill Stroke 93.4", Max Drill Stroke with 3 Whip Guides 81.4", Main Work Piece Table 62" x 96", 60,000 lb. Work Table Capacity, 52.75" Magnetic Rotary Table, Infinite 360 Degrees, 15 Degree Vertical Head Tilt, 3,500 RPM Cat 50 Auxiliary Spindle

1999 Tarus TPTCGD 84120 CNC Gun Drill, 84" x 120" T-Slotted Table, 3500-RPM Primary Spindle, 2000-RPM Secondary Cat 50 Spindle, Lemoine Control, 120" x 114" x 44" XYZ Travels, Thru Spindle Coolant

1998 Tarus TPTCGD 511S CNC Gun Drill, 60" x 106" T-Slotted Table, 3500-RPM Primary Spindle, 2000-RPM Cat 50 Secondary Spindle, Tarus Control, 130" x 60" x 96" Travels, Thru Spindle Coolant



2016 Makino EDNC 15 EDM

EDMS

2016 Makino EDNC 15 Electrical Discharge Machine, 53" x 78.5" T-Slotted Table, (2) 39" x 47" Tooling Plates, 67" x 45" x 31" XYZ Travels, Erowa Chuck System, Hyper I Touch Screen Control, Drop Tank, 16-Position ATC, Hyper I Touch Screen Control, C-Axis Head; Tank Size 98.4" x 62.9" x 31.5"



Agie Charmilles Agietron Spirit 3 C-Axis CNC Sinker EDM

2007 Agie Charmilles Agietron Spirit 3 C-Axis CNC Sinker EDM, 19.75" x 27.5" T-Slotted Table, Drop Tank, 12.7" x 15.7" x 13.8" XYZ Travels, 10-Position Electrode Holder, GF Touch Screen Control, Erowa System



2000 HPT 2500 Ton Hydraulic Tryout Press



Millutensil MIL203 Hydraulic Spotting Press

TRYOUT & SPOTTING PRESSES

2000 HPT 2500 Ton Hydraulic Tryout Press, 138" x 84" T-Slotted Bed, 96" x 142" T-Slotted Ram, 56" Windows, 72" Stroke, 82" Max. Daylight

1977 Abeseiki CDS-2520-200M 200 Ton Hydraulic Spotting Press, 98" x 78" T-Slotted Roll Out Bolster, 79" x 98" T-Slotted Swing Out Top Platen, 86" Max. Daylight

1997 Millutensil MIL203 165 Ton Hydraulic Spotting Press, 4-Post, 59" x 79" T-Slotted Rolling Bolster Bed, 59" x 79" T-Slotted Swing Out Top Platen, 65" Max Daylight



Anayak CNC Traveling Column Horizontal Milling Machine

CNC HORIZONTAL MILLING MACHINES

2000 Anayak HVM-H-5000 CNC Traveling Column Horizontal Milling Machine

1996 Anayak HVM-H-3300 CNC Traveling Column Horizontal Milling Machine

1998 Anayak HVM-H-3300 CNC Traveling Column Horizontal Milling Machine

1999 Anayak HVM-H-3300 CNC Traveling Column Horizontal Milling Machine

2003 FPT Pragma M CNC Traveling Column Horizontal Milling Machine

1995 Anayak HVM 3300 Horizontal Milling Machine



FPT Pragma M CNC Traveling Column Horizontal Milling Machine



Anayak HVM-H-5000 CNC Traveling Column Horizontal Milling Machine



2003 Sogotec BD3223 CNC Bridge Mill

CNC BRIDGE MILLS

1995 Awea SP3016 CNC Bridge Mill 59" x 128" Traveling Table, 3000-RPM Cat 50 Spindle, Fanuc Series O-M Control, 120" x 63" x 30" XYZ Travels, Coolant

2003 Sogotec BD3223 CNC Bridge Mill, 79" x 118" T-Slotted Traveling Table, 5000-RPM Cat 50 Spindle, Fanuc Series 18-M Control, 126" x 63" x 31.5" XYZ Travels, 40-Pos ATC

Place your bid on: **BidSpotter**



OKK VP600 CNC Vertical Machining Center

CNC VERTICAL MACHINING CENTERS

2007 OKK VP600 CNC Vertical Machining Center, 20,000 RPM, 5th Axis Trunnion Table, Through-Spindle Coolant

2007 OKK VM7 III CNC Vertical Machining Center

(2) 2004 Deckel Maho DMC60T Vertical Machining Centers

2000 Strathclyde Machine Tool SMV-850 CNC High Speed Graphite Vertical Machining Center

(2) 2001 Strathclyde Machine Tools HS-500 CNC High Speed Graphite Vertical Machining Centers

(2) Strathclyde Machine Tool HS-1300 CNC High Speed Vertical Machining Centers

2008 YCM Industries DCV4025B Bridge Type Vertical Machining Center



YCM Industries DCV4025B Bridge Type Vertical Machining Center

ADDITIONAL EQUIPMENT

1980 Okamoto PSG-125 Hydraulic Surface Grinder

Sullair LS-16-75S-AC Rotary Screw Air Compressor

2012 JLG 2630ES Scissor Lift

1970 Hyster S-150A Fork Lift Truck

Kenworth Tractor Trailer, GMC #3500 HD Dually Pickup Truck

Elwell – Parker Die / Mold Mover

Large Quantity of Tool Holders, Angle Plates, Tool Room, Welders, Inspection, Hand Tools, Power Tools, Benches, Transformers, Floor Scrubbers, Forklifts, Air Compressors, and much more



Okamoto PSG-125 Hydraulic Surface Grinder



Allis Chalmers 12,000 Lb Capacity Forklift



Hyster S-50FT Forklift



JLG 2630ES Scissors Lift



GMC 3500 HD Dually Pickup Truck



Amada HFA250W Horizontal Band Saw



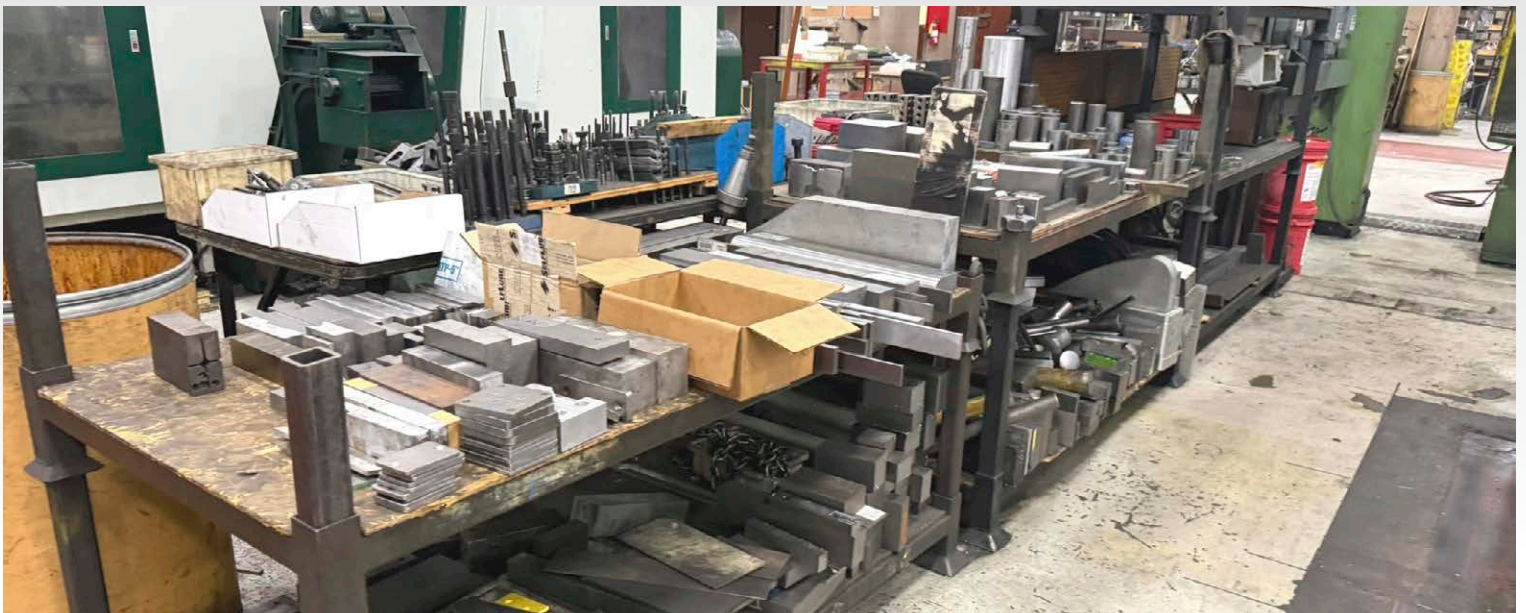
Bridgeport Vertical Milling Machines



Miller Welders



CNC Tool Holders



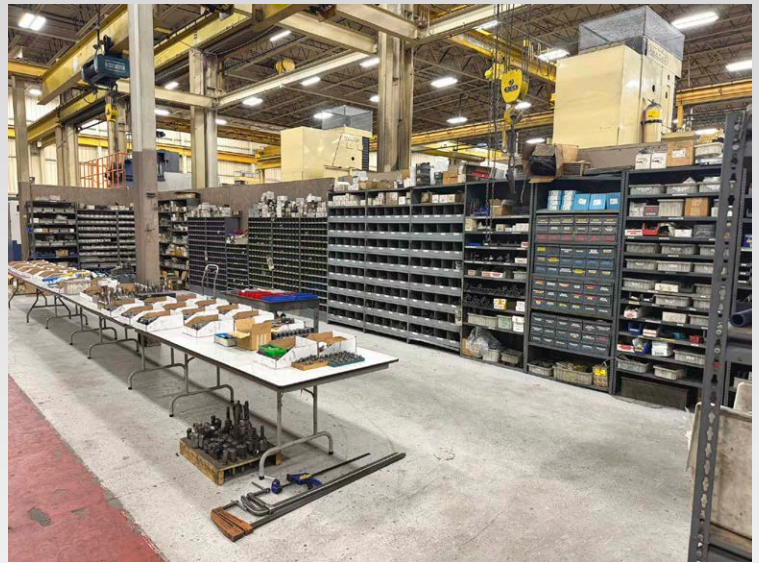
Raw Material



Bar Stock



Angle Plates



Partial View of Tooling

TERMS AND CONDITIONS | **PAYMENT:** Full payment within 48 hours of receiving invoice. Wire Transfer, Cashier's Check or Certified Check. No other forms of payments will be accepted. Removal dates for each sale will be posted on www.maynards.com. Full Payment Must be Made before removal of Purchase. Everything is Sold "As-Is, Where-Is." All Sales Final. Cost and Responsibility for Removal of Purchase Remains with the Purchaser. Every Effort will be Made to Facilitate Removal. While Quantities and Descriptions are Believed to be Accurate, the Auctioneer, Owners or Counsel Make no Warranties or Guarantees Either Expressed or Implied as to Authenticity, Genuineness of or Defects in Any Lot & will not be Held Responsible for any Advertising Discrepancies or Inaccuracies. No Warranties Whatsoever are Made as to Condition Merchantability or Fitness for Use of Any Item. May we Suggest you Take Full Advantage of the Preview & Inspection Period. Sale Subject to Additions & Deletions. Sales Tax 6% unless exemption forms are supplied. Please Check Availability of Equipment.

AN ONLINE BUYER'S PREMIUM OF 20% WILL BE CHARGED ON ALL SUCCESSFUL BIDS.

For Further Information Email: customerservice@maynards.com

Maynards
SINCE 1902

17177 N. Laurel Park Drive, Suite 236,
Livonia, MI 48152
248-569-9781 | maynards.com

Sale in conjunction with

**MIEDEMA'S
ORBITBID**

**PRESTIGE
AUCTIONS**