

Surplus to Leading

HYDRAULIC REPAIR SERVICE COMPANY



CLOSES TUESDAY, JUNE 2ND AT 11:00 AM ET

REGISTER NOW: BidSpotter

Location: Lambertville, New Jersey

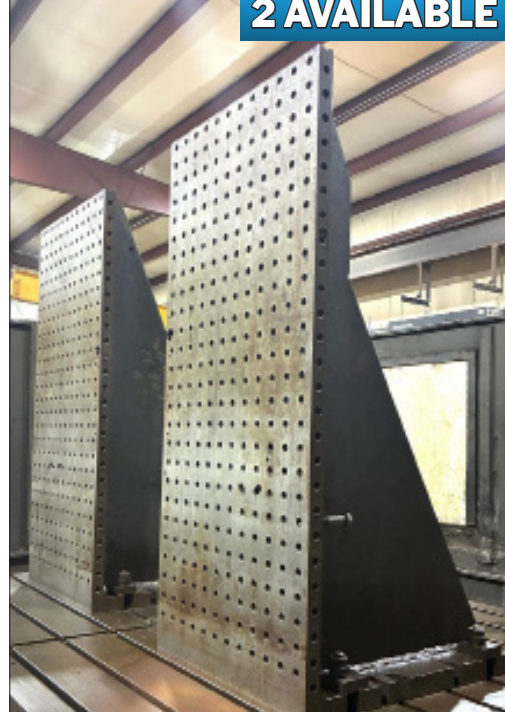
FEATURING HYUNDAI KIA KBN-135 CNC HORIZONTAL BORING MILL, HAAS VF-6/50 CNC VERTICAL MACHINING CENTER, 36" BLANCHARD ROTARY SURFACE GRINDER, COMPLETE TOOLROOM, SCOTCHMAN COLD SAW, WELDERS, AIR COMPRESSOR, KOMATSU LPG FORKLIFT AND MORE!

VIEW LOT CATALOG & REGISTER TO BID NOW!



HYUNDAI-KIA KBN-135 TABLE TYPE CNC HORIZONTAL BORING MILL

VIEW LOT #29



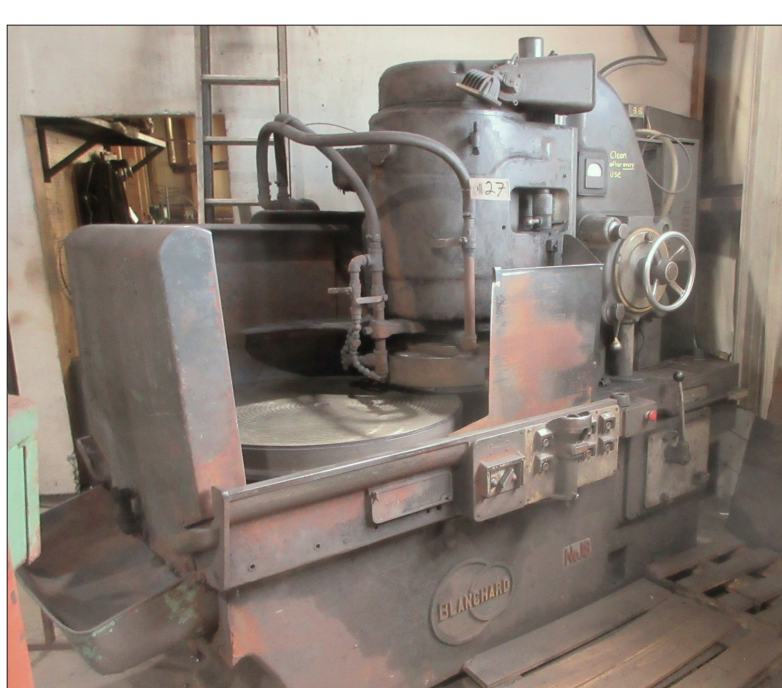
RIGHT ANGLE PLATES

VIEW LOT #145



HAAS VF-6/50 CNC VERTICAL MACHINING CENTER

VIEW LOT #28



36" BLANCHARD #18 VERTICAL SPINDLE ROTARY SURFACE GRINDER

VIEW LOT #27



KOMATSU FG30HT-16 PROPANE / GAS FORKLIFT TRUCK

VIEW LOT #139



20" X 100" FORTUNE 20/100 LATHE

VIEW LOT #30



SCOTCHMAN 350LT COLD SAW

VIEW LOT #107



BRIDGEPORT SERIES II VERTICAL KNEE TYPE MILL

VIEW LOT #31



20" CLAUSING 2774 VARI-SPEED FLOOR TYPE DRILL PRESS

VIEW LOT #105



17" CLAUSING 1768 VARI-SPEED FLOOR TYPE DRILL PRESS

VIEW LOT #106



MILLER SYNCROWAVE 250 CONSTANT CURRENT AC/DC WELDER

VIEW LOT #32



MILLER "MILLERMATIC 300" 3-PHASE WELDER

VIEW LOT #108



ATLAS COPCO GA15F ROTARY SCREW-TYPE AIR COMPRESSOR

VIEW LOT #25



LARGE QUANTITY OF MATERIAL - ASSORTED MANGANESE PLATES, ALUMINUM, CUT PLATES, I-BEAMS, RACKS, ETC.

VIEW LOTS #146 - 165

VIEW AUCTION DETAILS & REGISTER NOW!

DATE: TUESDAY, JUNE 2 @ 11:00 AM ET

LOCATION: LAMBERTVILLE, NEW JERSEY

INSPECTION: BY APPOINTMENT

ADD AUCTION TO CALENDAR:



****ACCEPTING PRE-AUCTION OFFERS ON MAJOR MACHINES****

CONTACT ADAM HERMAN FOR MORE INFORMATION

adam.herman@prestigeequipment.com | 631-249-5566



WE SPECIALIZE IN INDUSTRIAL AUCTIONS & LIQUIDATIONS WORLDWIDE
VIEW FULL CALENDAR