

ONLINE AUCTION

SURPLUS TO CONTINUING OPERATIONS OF

zurn • elkay

WATER SOLUTIONS



Thursday, June 11 at 11:00 AM ET (10:00 AM CT)



Location: Savanna, Illinois

COMPLETE METAL FABRICATION AND STAMPING PLANT - FEATURING 2017 GREENERD 900 TON 4-POST HYDRAULIC PRESS, TRUMPF TRULASER 7040 5-AXIS FIBER LASER CELL, TRUMPF TRU-PUNCH 3000 ELECTRO SERVO PUNCH, LVD STRIPPIT PX-1530 FMS PUNCHING CELL W/ CT-P 10 SHELF TOWER, WYSONG HYDRAULIC PRESS BRAKE, BECKWOOD 250 TON 4-POST HYDRAULIC PRESS, BLOW 300 TON STRAIGHT SIDE PRESS, COIL REELS, FEEDERS, UNCOILERS, WELDING, MACHINE SHOP, PLANT SUPPORT, SCRAP MATERIAL, RACKING AND MORE!

2017



**GREENERD 4TA-900/700-60x60
900 TON 4-POST HYDRAULIC PRESS**



**BLOW SC2-300-102-48 300-TON MECHANICAL
STRAIGHT-SIDE PRESS**



**BECKWOOD 250 TON 4-POST
HYDRAULIC PRESS**

2013



**TRUMPF TRU-PUNCH 3000 SERVO ELECTRIC
PUNCH**

2015



**TRUMPF TRULASER 7040 5-AXIS 3D
FIBER LASER**

2017



**10 SHELF SHEET
STORAGE CPT TOWER**

**LVD STRIPPIT PX-1530 FMS
PUNCHING CELL**

Inspection: Wednesday, June 10 from 8:00 AM - 4:00 PM or By Appointment

Contact Frank DiSalvo For More Info at 631-249-5566 or frank@prestigeequipment.com

PRESTIGE EQUIPMENT AUCTIONS
35 Pinelawn Road, Suite 203W,
Melville, NY 11747
Phone: 631-249-5566
auctions@prestigeequipment.com
www.prestigeequipment.com



In
Conjunction
With:



View Full Lot Catalog & Information at: www.prestigeequipment.com/auction/zurn-elkay/

HYDRAULIC PRESSES • MECHANICAL PRESSES

2017



GREENERD 4TA-900/700-60x60 900 TON 4-POST HYDRAULIC PRESS

HYDRAULIC PRESSES:

2017 GREENERD 4TA-900/700-60x60 900-TON 4-POST HYDRAULIC PRESS, 140-700 Ton Cushion, 60" x 60" Work Area, 24" Stroke, 51" Daylight, Fanuc R-2000iB-210F Loading Robot with Fanuc System R-30iA Control Unit with Pendant, S/N: 1717292

BECKWOOD 250-TON 4-POST HYDRAULIC PRESS, 250-Ton Capacity, 48" x 32" Bed Area, 18" Stroke (Approx.), S/N: 22428

ROGERS MD200-4865-PUE 200-TON HYDRAULIC PRESS, 24" Stroke, 44" x 23" Bed Area, 6" to 30" Minimum/Maximum Daylight, S/N: 900043

CLEARING H-500-72 500-TON 4-POST HYDRAULIC PRESS, 500-Ton Capacity, 36" Stroke, 70" x 60" Bed Area, S/N: 54-18178-P



BECKWOOD 250 TON 4-POST HYDRAULIC PRESS



ROGERS MD200-4865-PUE 200-TON HYDRAULIC PRESS



CLEARING H-500-72 4-POST HYDRAULIC PRESS

MECHANICAL PRESSES:

BLOW SC2-300-102-48 300-TON MECHANICAL STRAIGHT-SIDE PRESS, 300-Ton Capacity, 10" Stroke, 30.5" Shut Height Over Bolster, 18" Slide Adjustment, 102" x 48" Bed Area, 20-40 SPM, Cienco Automator II Press Control, S/N: SDG-300-278-89

BLOW SC2-150-78-42 150 TON MECHANICAL STRAIGHT-SIDE PRESS, 150-Ton Capacity, 4" Stroke, 16" Shut Height Over Bolster, 6" Slide Adjustment, 78" x 42" Bed Area, 50-90 SPM, Cienco Automator II Press Control, S/N: SDF-150-279-89

HEIM S2-250 250-TON MECHANICAL STRAIGHT-SIDE PRESS, 250-Ton Capacity, 100" x 48" Bed Area, 8" Stroke, 8" Slide Adjustment, 24" Shut Height, 35 SPM, Cienco Press Controls, Trabon Maxi-Monitor Lubrication Controls, S/N: H-3635, with Perfecto 24" Servo Feeder

HEIM S2-250 250-TON MECHANICAL STRAIGHT-SIDE PRESS, 250-Ton Capacity, 100" x 48" Bed Area, 8" Stroke, 8" Slide Adjustment, 24" Shut Height, 35 SPM, Cienco Press Controls, Trabon Maxi-Monitor Lubrication Controls, S/N: H-3636, with Air Feeds Inc. AF2 Pneumatic Feeder, 24" x 24" Capacity, S/N: 890816

NIAGARA A110-GRD 110-TON OBI GEARED PUNCH PRESS, 110-Ton Capacity, 5" Stroke, 19.25" Shut Height, 42" x 27" Bed Area, 18" x 21" Ram Area, 38 SPM, Rockford Systems SSC-1500 Control, S/N 42161



BLOW SC2-300-102-48 300-TON MECHANICAL STRAIGHT-SIDE PRESS



BLOW SC2-150-78-42 150-TON MECHANICAL STRAIGHT-SIDE PRESS



HEIM S2-250 250-TON MECHANICAL STRAIGHT-SIDE PRESS



NIAGARA A110-GRD OBI GEARED PUNCH PRESS

2 AVAILABLE

CNC FIBER LASER • CNC PUNCHING MACHINES

2015



TRUMPF TRULASER 7040 5-AXIS 3D FIBER LASER

CNC FIBER LASER:

2015 TRUMPF TRULASER 7040 5-AXIS 3D FIBER LASER, 3000 Watt, 5-Axis, Trumpf Siemens CNC Control, 157.48" X-Axis Travel, 60" Y-Axis Travel, 30" Z-Axis Travel, (2) Movable Tables, TruDisk 3001 3 kW Resonator, Riedel Chiller, Herding 1200-20 Dust Collector, B-Axis Rotary Station, S/N: S0541C0143

CNC PUNCHING MACHINES:

2013 TRUMPF TRU-PUNCH 3000 SERVO ELECTRIC PUNCH, Bosch CNC Ctrl., 22 Ton, 50" x 100" Travel, 3" Max. Punch Dia., 18-Station Linear Tool Changer, 136 Deg. Punch Head Rotation, Tooling and Cartridges, LNS Turbo HB Chip Conveyor, 120" x 48" Roller Ball Type Extension Table on Casters, S/N: A0035A0218, with Assorted Spare Parts

2023 TRUMPF QUICK SHARP TOOL SHARPENER, Integrated Clamping Fixtures, SN: A0661A0497

2017 LVD STRIPPIT PX-1530 FMS PUNCHING CELL w/10 Shelf Sheet Storage CPT Tower, LVD Touch-P Control, 20 Ton, 60" x 120" Travel, 360 Degree Punch Head Rotation, Brush Table, 3 Programmable Work Clamps, Hennig Chip Conveyor, S/N: 031073117

2013



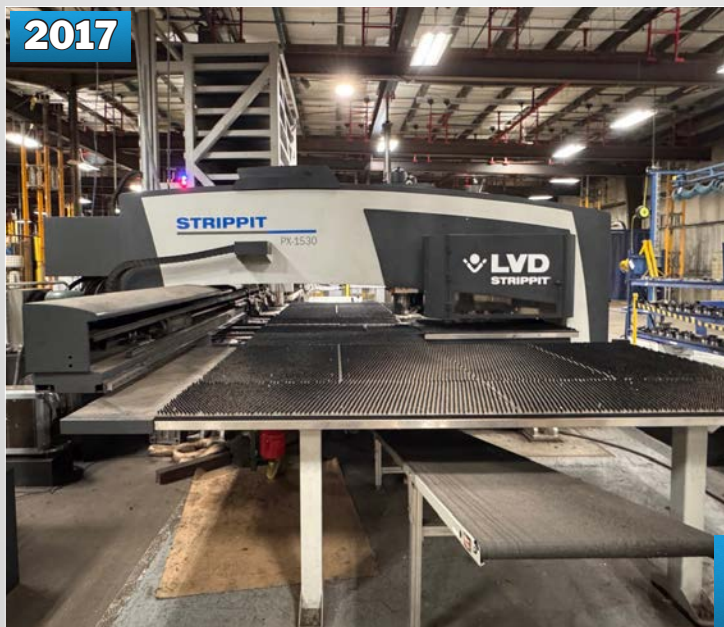
TRUMPF TRU-PUNCH 3000 SERVO ELECTRIC PUNCH

2023



TRUMPF QUICK SHARP TOOL SHARPENER

2017



LVD STRIPPIT PX-1530 FMS PUNCHING CELL



10 SHELF SHEET STORAGE CPT TOWER

PRESS BRAKES

PRESS BRAKES:

WYSONG H-110-144 HYDRAULIC PRESS BRAKE, 100-Ton, 144" Overall, 2.5" Stroke, 4" Adjustment, 12" Max. Die Space, Automec CNC 1-Axis Back Gauge with Control, Merlin 18" Light Curtains, 13,144 Running Hours, S/N: HPB25-102

CHICAGO DRIES & KRUMP 68B MECHANICAL PRESS BRAKE, 55-Ton, 8' Overall, 6'-6" Between Housings, 8' x 12 Gauge Capacity, Manual Back Gauge, Merlin 18" Light Curtains, 17,003 Running Hours, S/N: L20600

CHICAGO DRIES & KRUMP 1012-R MECHANICAL PRESS BRAKE, 150-Ton, 12' Overall, 10'-6" Between Housings, 12' x 3/16" Capacity, Manual Back Gauge, Merlin 18" Light Curtains, 15,345 Running Hours, ISB Revolver Based Press Control, S/N: L16304

VERSON 100-144 MECHANICAL PRESS BRAKE, 100-Ton, 144" x 36" Flanged Bed, 6" Stroke, 16" Shut Height, 5" Adjustment, 30 SPM, Ciego ISB PCI-100 Press Controls, Merlin TX END 46" Light Curtains, 11,721 Running Hours, S/N: 16436

CINCINNATI SERIES 9 MECHANICAL PRESS BRAKE, 225-Ton, 12' Overall, 10'-5" Between Housings, 6" Stroke, 24" Horn, 120" x 22" Flanged Bed, Ciego ISB PCI-100 Press Controls, Merlin RX Master 28" Light Curtains, Merlin RX END 16" Light Curtains, 57,467 Running Hours, S/N: 33133

BANTUM MODEL B2120GFS 12-TON PNEUMATIC PRESS BRAKE, 24" Bed, 1.875" Adjustable Stroke, 110 Max PSI, Foot Pedal Actuator, S/N: D9773 & D9772



WYSONG H-110-144 HYDRAULIC PRESS BRAKE



CHICAGO DRIES & KRUMP 68B MECHANICAL PRESS BRAKE



VERSON 100-144 MECHANICAL PRESS BRAKE



CHICAGO DRIES & KRUMP 1012-R MECHANICAL PRESS BRAKE



CINCINNATI SERIES 9 MECHANICAL PRESS BRAKE

AIR COMPRESSOR • MATERIAL HANDLING CONVEYORS • SHOP SUPPORT

2015



GARDNER DENVER EAP99K 100HP AIR COMPRESSOR

AIR COMPRESSOR:

2015 GARDNER DENVER EAP99K 100HP AIR COMPRESSOR, 125 PSIG, 460V, 60 Hz, 3PH, Sn S480878, 63,057 Hours

12,000 LBS.



CATERPILLAR M120D 36V ELECTRIC FORKLIFT

2,650 LBS.



NISSAN TN01L18HV 36V ELECTRIC 3-WHEEL FORKLIFT

2,450 LBS.



CLARK TMG-15S 36V ELECTRIC 3-WHEEL FORKLIFT

MATERIAL HANDLING:

CATERPILLAR M120D 12,000 LB. CAPACITY 36V ELECTRIC FORKLIFT, 120" Max Lift Height, 2-Stage Mast, 60" Forks, Side Shift, Non-Marking Solid Cushion Tires, S/N: 8AG00641, 492 Hours. NOTE: Delayed Delivery, Approx. 2 Weeks

NISSAN TN01L18HV 2,650 LB. CAPACITY 36V ELECTRIC 3-WHEEL FORKLIFT, 240" Max Lift Height, 4-Stage Mast, 42" Forks, Side Shift, Fork Spreader, Non-Marking Solid Cushion Tires, S/N: TN01-720545, 73,730 Hours

CLARK TMG-15S 2,450 LB. CAPACITY 36V ELECTRIC 3-WHEEL FORKLIFT, 189" Max Lift Height, 3-Stage Mast, 42" Forks, Side Shift, Fork Spreader, Non-Marking Solid Cushion Tires, S/N: TMG24802907489FB, 4,269 Hours

2001 GENIE GS2646 ELECTRIC SCISSOR LIFT, 1,000 Lb. Capacity, 26' Max Platform Height, 7' x 44" Platform with 48" Extension, Non-Marking Tires, S/N GS46-43158, 1,287 Hours



FELDMAN FORMERS DH 42-2 BENDER



SUPERMAX HRD-700H RADIAL ARM DRILL



DENRAY 20' X 12' X 8' DUST BOOTH



HI-LITE POLISHING MACHINE CO. INC. MODEL HBP 264 STROKER SANDER



KENT KGS-306A11D 12 X 24 SURFACE GRINDER

2015



NS MAQUINAS ML100 TUBE FINISHING MACHINE



MILLER DYNASTY 350 TIG WELDER



JACO JSH-257-4 24" STRAIGHTENER



ENERPAC H-FRAME SHOP PRESS

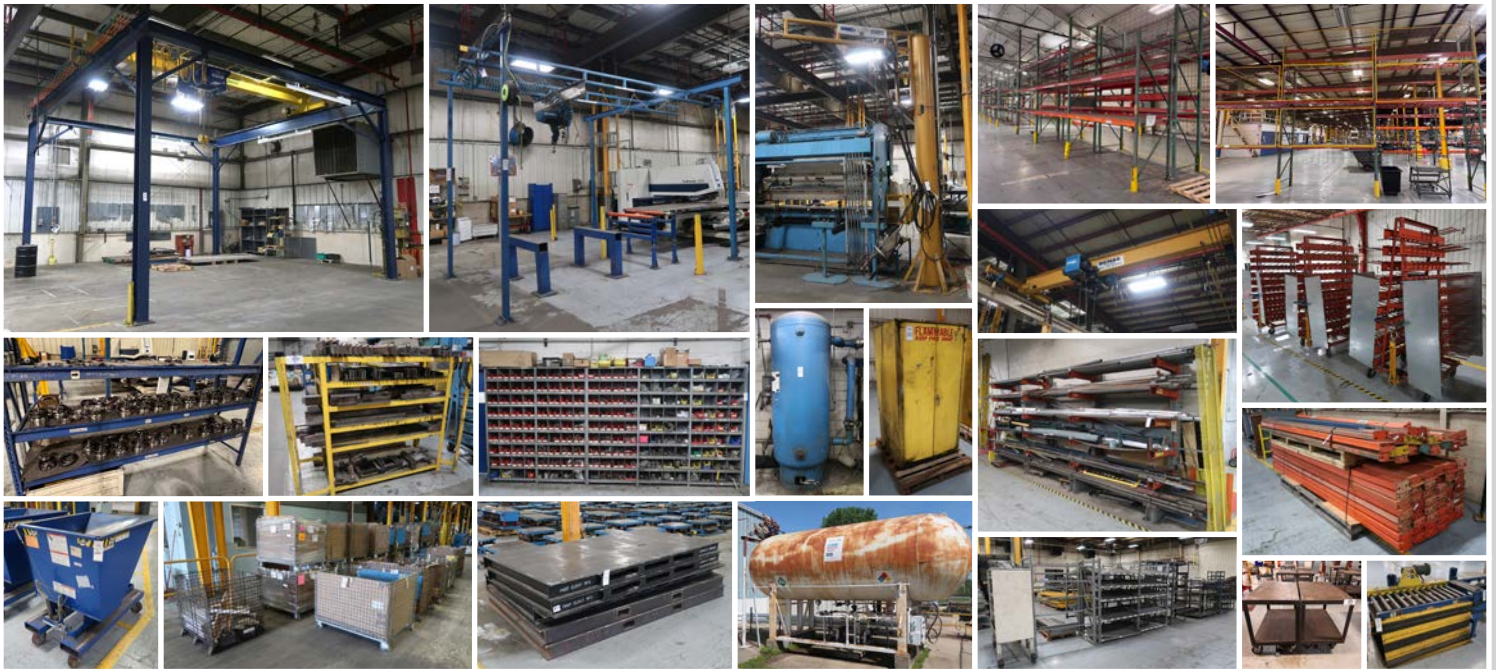


HUGE QUANTITY OF POWERED ROLLER CONVEYORS

HUGE QUANTITY OF PRESS DIES AND MORE!



HUGE QUANTITY OF PRESS DIES – Over (160) Press Dies Total, Total Weight of Approximately 300,000 Lbs.



ONLINE AUCTION

SURPLUS TO CONTINUING OPERATIONS OF



Thursday, June 11 at 11:00 AM ET (10:00 AM CT)



Location: Savanna, Illinois

Inspection: Wednesday, June 10 from 8:00 AM - 4:00 PM or By Appointment

Contact **Frank DiSalvo** For More Info at **631-249-5566** or **frank@prestigeequipment.com**

PRESTIGE EQUIPMENT AUCTIONS
35 Pinelawn Road, Suite 203W,
Melville, NY 11747
Phone: 631-249-5566
auctions@prestigeequipment.com
www.prestigeequipment.com



In
Conjunction
With:



View Full Lot Catalog & Information at: www.prestigeequipment.com/auction/zurn-elkay/