

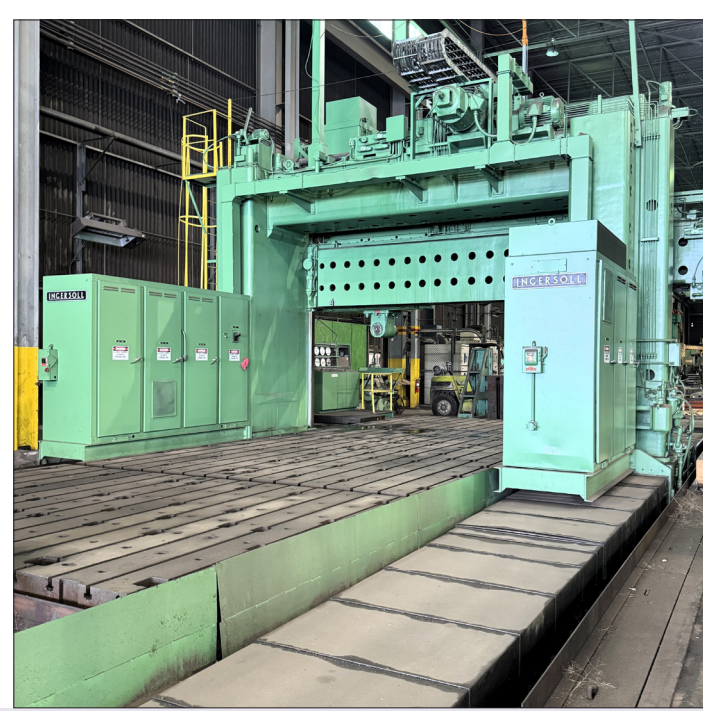
# BUILDING SOLD, MUST BE MOVED!

**Large Capacity Machine Tools**

*Date: Ongoing | Inspection: By Appointment*

FEATURING INGERSOLL 17' X 10' X 47' DOUBLE HOUSING TRAVELLING GANTRY PLANER MILL, GRAY 84" VERTICAL BORING MILL, GIDDINGS & LEWIS 70-N7-F FLOOR TYPE HORIZONTAL BORING MILLS

[VIEW MORE DETAILS](#)



**INGERSOLL 17' X 10' X 47' DOUBLE HOUSING TRAVELLING GANTRY PLANER MILL**

[VIEW FULL DETAILS](#)

### TRAVELLING GANTRY PLANER MILL

• **Ingersoll 17' x 10' x 47' Double Housing Travelling Gantry Planer Mill**, 100 HP Vertical Milling Head, Spindle Speeds (2-Ranges) 0-600 RPM, 204" Maximum Width Between Columns, X-Axis Gantry Travel 564", Distance Spindle to Table 120", Quill Diameter 12", Quill Feed 15", 38" Right Angle Attachment, 14" Right Angle Attachment, 30" Long Bearing Spindle Extension, 204" x 504" T-Slotted Floor Plates, Infinitely Variable Feeds, Chip Conveyors, Pendant Control, S/N 22363

[VIEW REF #44643](#)



**3 HEADS**

**84" GRAY VERTICAL BORING MILL**

[VIEW FULL DETAILS](#)



**7" GIDDINGS & LEWIS 70-N7-F FLOOR TYPE HORIZONTAL BORING MILL**

[VIEW FULL DETAILS](#)

### VERTICAL BORING MILLS

• **84" Gray Vertical Boring Mill**, 3 Heads, Left Hand Vertical Ram, Right Hand 5-Position Turret, Side Head, 84" Table Diameter, 94" Swing, 86" Under Rail, Table Speeds 0 to 100 RPM Feeds .0025-.250 IPR, Pendant Control, 4-Jaw Independent Chuck, 75 HP, S/N: 9763 [VIEW REF #44640](#)

### FLOOR TYPE HORIZONTAL BORING MILLS

• **7" Giddings & Lewis 70-N7-F Travelling Column Horizontal Boring Mill**, #50 ASA Taper, Power Draw Bolt, Travels: X- 432", Y-144", Z-72" (Spindle), Speeds 2.65-560 RPM, Pendant Controls, Digital Readouts, 75 HP, S/N 270-17-69 [VIEW REF #44645](#)

• **7" Giddings & Lewis 70-N7-F Travelling Column Horizontal Boring Mill**, 50 ASA Taper, Power Draw Bolt, Travels: X- 432", Y-144", Z-72" (Spindle), Speeds 2.65-560 RPM, Pendant Controls, Digital Readouts, 75 HP, S/N 270-17-69

• **Machines Only, Floor Plates Not Included.**



**60" x 170" x 12" GIDDINGS & LEWIS T-SLOTTED FLOOR PLATES**

### ALSO AVAILABLE

• **60" x 170" x 12" Giddings & Lewis T-Slotted Floor Plates**, 3-Available **SOLD**

[VIEW MORE DETAILS](#)

**DATE: ONGOING**

**INSPECTION: BY APPOINTMENT**

**CONTACT TERRY LASHIN FOR MORE INFORMATION**

terry@prestigeequipment.com | 631-249-5566



WE SPECIALIZE IN INDUSTRIAL AUCTIONS & LIQUIDATIONS WORLDWIDE  
[VIEW FULL CALENDAR](#)