

ONLINE AUCTION



**Premium Metal
Fabrication, Prototyping
& Engineering Facility**

SALE CLOSING

Tuesday, March 24, at 10 AM ET

ASSET LOCATION

2902 E. Sligh Avenue
Tampa, FL 33610

INSPECTION

Monday, March 23, from 9 AM to
4 PM ET, or by appointment

**PRE-AUCTION
OFFERS INVITED
ON MAJOR ASSETS**

COMPLETE CATALOG & INFORMATION:

www.prestigeequipment.com/auktion/general-saw/

Bidding Available Through

BidSpotter



MAZAK OPTIPLEX 3015 FIBER III CNC FIBER LASER

LASER HEAD



MESSER MPC 2000 CNC MULTI-PROCESS CENTER

FEATURING: (2) 2019 & 2017 MAZAK OPTIFLEX 3015 FIBER III 8 KW LASERS, 2022 SENFENG SF6020NT 6 KW PIPE FIBER LASER CUTTING MACHINE, 2020 MESSER MPC2000 MULTI-PROCESS CUTTING SYSTEM W/ DRILL, OXY, & PLASMA TORCH + SLAGGER M12X21 TABLE, 2020 FICEP 8"X 8"X 1" CNC ANGLE PUNCH & SHEAR LINE, 2023 ACCURPRESS ACCELL 250 TON X 12' CNC BRAKE, 2012 ACCURPRESS 150 TON X 10' CNC BRAKE, NEW WILA BRAKE TOOLING, 2020 HAEGER INSERTION MACHINE, PIRANHA 110 TON IRONWORKER, (2) HYD-MECH BAND SAWS, (20) MILLER & LINCOLN WELDERS, FREE-STANDING CRANES UP TO 5 TON CAPACITY, FORKLIFTS, COMPRESSORS, AND PLANT SUPPORT



PRESTIGE EQUIPMENT AUCTIONS

35 Pinelawn Road, Suite 203W, Melville, NY 11747

Phone: 631-249-5566

auktions@prestigeequipment.com

www.prestigeequipment.com

In
conjunction
with:



CNC FIBER LASERS, CNC TUBE FIBER LASER, CNC PLATE PROCESSOR

CNC FIBER LASERS

2019 MAZAK OPTIPLEX 3015 FIBER III CNC 8 KW FIBER LASER, s/n 305857, w/ MAZATROL Control, X-122.4", Y-62.8", Z-4.3", 60" x 120" Max. Workpiece, 2050 lb. Max. Workpiece Weight, (2) 5' x 10' Shuttle Tables, IPG YLS-8000 Power Supply, Auto Nozzle Changer, 2020 IPG LC-340 Chiller, 2020 CAMFIL GSXP6-3K Fume Filter Exhaust, 15,095 On Hours, 2,863 Cutting Hours

2017 MAZAK OPTIPLEX 3015 FIBER III CNC 8 KW FIBER LASER, s/n 287634, w/ MAZATROL Preview G Control, X-122.4", Y-62.8", Z-4.3", 60" x 120" Max. Workpiece, 2050 lb. Max. Workpiece Weight, (2) 5' x 10' Shuttle Tables, YLS-8000 Power Supply, Auto Nozzle Changer, 2017 IPG LC-340 Chiller, 2018 ROBOVENT Plaser MDC-8-2235 Fume Filter Exhaust, 20,684 On Hours, 4,316 Cutting Hours

CNC TUBE FIBER LASER

2022 SENFENG SF6020NT CNC 6 KW TUBE FIBER LASER, s/n 202204124, w/ CNC Control, RAYCUS RFL-C6000X 6KW Fiber Power Source, 2D Cutting Head, 262 FPM Max. Cutting Speed, 100 RPM Max. Rotational Speed, Auto Loading, 20' Infeed, 14' Outfeed, Chiller, Dust Collector



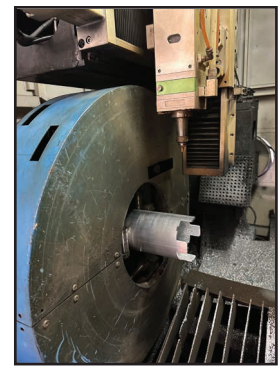
MAZAK OPTIPLEX 3015 FIBER III CNC FIBER LASER



LASER HEAD



SENFENG SF6020NT CNC TUBE FIBER LASER



LASER HEAD

CNC PLATE PROCESSOR

2020 MESSER MPC 2000 CNC MULTI-PROCESS CENTER, s/n MPC2016-20-6831, w/ MESSER GLOBAL Control Plus w/ 24" Touch Screen, SLAGGER M12X21 System w/ Pendant Remote Control, 12' x 21' Cutting Table, s/n T-6615-47001208, HYPER THERM XPR400 Plasma Unit, (1) Plasma Straight Cut Cutting Head, (1) Oxy Cutting Torch, (1) 36 HP CAT 40 Drill Head w/ 12-Station ATC, 2"Ø Drill Capacity, MESSER GOLD SERIES GS16 X-Flo 20 HP Fume Filter Exhaust System



MESSER MPC 2000 CNC MULTI-PROCESS CENTER



MESSER DRILL UNIT, PLASMA & OXY HEADS



MESSER FUME FILTER EXHAUST SYSTEM

CNC ANGLE PUNCH & SHEAR LINE, CNC PRESS BRAKES, PRESS BRAKE DIES

CNC ANGLE PUNCH & SHEAR LINE

2020 FICEP HP 20 T6 CNC ANGLE PUNCH & SHEAR LINE, s/n 36334, w/ FICEP PEGASO Control, 8" x 8" x 1" Capacity, (2) Hydraulic Punch Units (Each Unit has (3) Quick Change Punch Holders), Max. Speed of Angle - 196 FPM, Max. Gauge Line Positioning Speed - 26 FPM, 112 Ton Punch Capacity, 1-1/4" Max. Punch Ø, 505 Ton Shear Capacity, Gripper Type Infeed, Infeed Conveyor For Material up to 65'

CNC PRESS BRAKES

2023 ACCURPRESS ACCELL 425012 250 TON X 12' CNC PRESS BRAKE, s/n 14375, w/ VISION Control, 10'6" Between Housings, 12" Stroke, SUPREME 6-Axis Back Gauge, WILA American Style Power Ram Tool Clamping, WILA Express Crowding Die Holder, Electric Foot Switch Control, (2) Adjustable Front Support Arms, Flush Floor

2012 ACCURPRESS 515010 150 TON X 10' CNC PRESS BRAKE, s/n 11112, w/ BECKHOFF Control, 10'6" Between Housings, Back Gauge, WILA American Style Power Ram Tool Clamping, Electric Foot Switch Control, (2) Front Support Arms, Flush Floor



ACCURPRESS 250 TON X 12' CNC BRAKE



FICEP HP 20 T6 CNC ANGLE PUNCH & SHEAR LINE

FICEP GRIPPER TYPE INFEEED

PRESS BRAKE DIES

Large Selection of **WILA American Style** Press Brake Dies, Standard Press Brake Dies, **WILA Die Cabinet** and Die Racks



VIEW OF WILA AMERICAN STYLE & STANDARD BRAKE DIES



2012 ACCURPRESS 150 TON X 10' CNC BRAKE

MISCELLANEOUS MACHINES, WELDING

MISCELLANEOUS MACHINES

2023 RAZORTEK RZ2000H MINI WATER-COOLED FIBER LASER, s/n RZWNH20230420

2020 HAEGER 618 MSP-HE 6 TON HYDRAULIC INSERTION PRESS, s/n 6MSPe2223, w/ 18" Throat Depth, 8" Stroke, 4 Station Turret, Haeger PLC Controls, Tooling

PIRANHA PII110 110 TON HYDRAULIC IRONWORKER, s/n PII110-194, w/ Dual Operation, 20.5" Throat, 7" Stroke Length w/ 1-7/16" Ø Thru 1", Shear Capacity - 1" x 12", 3/4" x 18", 5" x 5" x 1/2" Angle, 2" Round Bar, 1-3/8" Square Bar, 15 HP, Electric Foot Switch, Attachments

HYD-MECH V-18APC FULLY AUTOMATIC TILT FRAME VERTICAL BAND SAW, s/n K1105301, w/ E600 PLC Control, 45° Mitering Left to Right, 18" x 20" Capacity, Hydraulic Clamping, 5 HP Variable Frequency Drive Blade Roller Table

HYD-MECH S-20A AUTOMATIC HORIZONTAL BAND SAW, s/n 80908750FD w/ 13" x 18" Capacity, (3) 10 Roller Conveyor Sections

FAMAR A39-13/2.5 52" X 1/8" POWER SLIP ROLL, s/n 2781, w/ 52.4" Working Length, .118" Max Plate Thickness, 3.5" Roll Ø

TIMESAVERS 2211-23-0 SERIES 2200 37" WIDE BELT SANDER, s/n 30027, w/ 37" x 75" Belt, 36" Max. Stock Width, 6" Contact Drum Ø, 8" Max. Part Length, 5" Max. Thickness, 14" Infeed Area, 15-45 FPM, w/ TIMESAVERS WDC-5 Wet-Type Dust Collector, s/n 29844

TRUMP K2V 3 HP VERTICAL MILL, s/n K2V-2366, w/ 9" x 42" Power Feed Table, 70-4200 RPM Spindle Speed, Power Quill Feed, ACU-RITE DRO



RAZORTEK RZ2000H FIBER LASER



HAEGER 6 TON INSERTION PRESS



PIRANHA PII110 IRONWORKER



TIMESAVERS 37" WIDE BELT SANDER

WELDING

(2) MILLER DYNASTY 350 TIG WELDERS, s/n LJ460268L, LJ460081L

(2) MILLER SYNCROWAVE 250DX TIG WELDERS, s/n MH071008L, NA020111L

MILLER SYNCROWAVE 200 TIG WELDER, s/n LG250281L w/ MILLER Coolmate s/n NA450302L

CK WORLDWIDE WF-5 TIG COLD WIRE FEED, s/n PO708

LINCOLN POWER MIG 255C MIG WELDER, s/n U1050701640

(3) MILLER MILLERMATIC 252 MIG WELDERS, s/n NE470244N, NF100083N, MF110421N

(3) MILLER MILLERMATIC 210 MIG WELDERS, s/n LG380897B, LE198259, LG181606B

MILLER MILLERMATIC 175 MIG WELDER, s/n LC368275

MILLER MILLERMATIC 135 MIG WELDER, s/n LC158866

MILLER THUNDERBOLT XL 225 STICK WELDER, s/n 903641

MILLER SPECTRUM 875 PLASMA CUTTER, Stock Number 907583

MILLER MPS20AFT PORTABLE SPOT WELDER, s/n HE781180

CDI 2302 STUD WELDER, s/n 2010181

ALSO: Tabletop Welding Positioners, C-Clamps, Bar Clamps, Quick Grip Clamps, Torch Carts



HYD-MECH V-18APC VERTICAL BAND SAW



FAMAR 52" X 1/8" POWER SLIP ROLL



VIEW OF WELDERS



PRE-AUCTION OFFERS INVITED ON MAJOR ASSETS

CRANES & MATERIAL HANDLING, FORKLIFTS

CRANES & MATERIAL HANDLING

R&M 5 TON FREE-STANDING BRIDGE CRANE, w/ Approx. 33'8" Span x 48'8" Runway x 14'8" Under Rail, Electric Hoist, Pendant Control

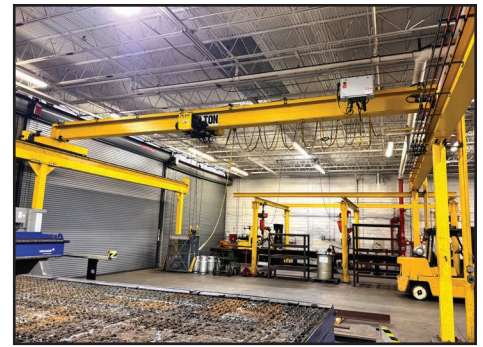
SPANCO 1 TON FREE-STANDING CRANE SYSTEM, w/ Approx. 16' Span x 25' Runway x 12' Under Rail, Coffing JLC Electric Hoist, Pendant Control

SPANCO 1 TON FREE-STANDING CRANE SYSTEM, w/ Approx. 15' Span x 23' Runway x 12' Under Rail, Coffing JLC Electric Hoist, Pendant Control

TRI-BRIDGE FIXED GANTRY SYSTEM, w/ 24' x 18' Span x 10'6" Under Rail, Each Gantry w/ JET 5-Ton Hoist, Pendant Controls

ANVER VPF-57-AC-L VACUUM GENERATOR W/ L200M8-110 4/44 LIFTING FRAME ELECTRIC SHEET LIFTER, s/n S0120013899 & 410017-1, 2,000 lb. Capacity, 8-Pad, 6' x 12' Max. Sheet Size

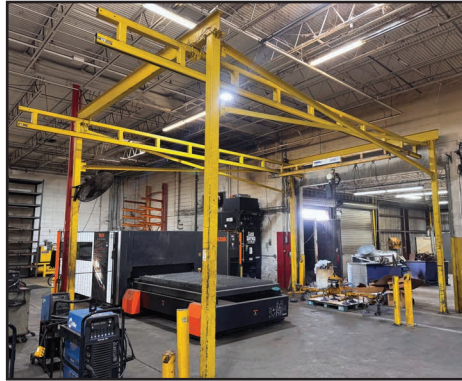
(2) EARTH-CHAIN ELM-1000 PERMANENT LIFTING MAGNETS, w/ 2,200 lb. Capacity



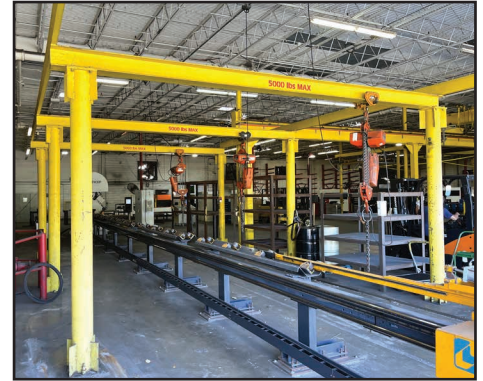
R&M 5 TON FREE STANDING BRIDGE CRANE



SPANCO 1 TON FREE STANDING CRANE SYSTEM



SPANCO 1 TON FREE STANDING CRANE SYSTEM



TRI-BRIDGE FIXED GANTRY SYSTEM

FORKLIFTS

YALE GLC135CANGBE085 13,250 LB. LPG FORKLIFT, s/n A879D01601W, w/ 143" 3-Stage Mast, Side Shift, Solid Tire, 72" Fork Length

HYSTER S120FT 11,900 LB. LPG FORKLIFT, s/n H004V03009M, w/ 190" 3-Stage Mast, 60" Fork Length, Side Shift

YALE GLC050VXNVSE085 4,800 LB. LPG FORKLIFT, s/n A910V04962D, w/ 194.9" 3-Stage Mast, Side Shifter, 42" Fork Length, (Not in Running Condition)

YALE GLC050RGNUAE084 4,800 LB. LPG FORKLIFT, s/n E187V23788B, w/ 194.9" 3-Stage Mast, Side Shifter, 42" Fork Length, (Not in Running Condition)



ANVER ELECTRIC VACUUM SHEET LIFTER



13,250 LB. CAP.

YALE LPG FORKLIFT



11,900 LB. CAP.

HYSTER LPG FORKLIFT

Bidding Available Through

BidSpotter

VEHICLES & PLANT SUPPORT

VEHICLES & PLANT SUPPORT

2003 FORD SUPER DUTY F-250 LARIAT CREW CAB PICK UP TRUCK, VIN 1FTNW21L53EA71288, 186,508 Miles, Triton 5.4L Engine, Leather UNKNOWN MAKE FLAT DECK TANDEM AXLE BUMPER PULL TRAILER, 14' x 8'

2017 KAESER AS 30T 30 HP ROTARY SCREW COMPRESSOR, s/n 1054, w/ SIGMA 2 Control, 125 PSIG

2005 KAESER AS30 30 HP ROTARY SCREW COMPRESSOR, s/n 1082, w/ SIGMA Control, 125 PSIG

KAESER SM11 10 HP ROTARY SCREW COMPRESSOR/DRYER, s/n 1344, w/ SIGMA Control, TA11 Air Dryer, Mounted on Approx. 60 Gallon Air Tank

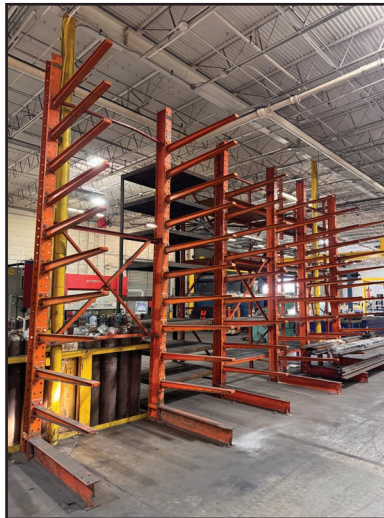
2014 KAESER TD 61 AIR DRYER, s/n 2129

(3) AIR HOLDING TANKS

ALSO: Toolboxes, Mag Drills, Air Tool, Power Tools, Hand Tools, Grinders, Carbide Inserted Drills, Twist Drills, End Mills, Taps, Collets, Machine Vises, Bench Vises, Outside Micrometers, Depth Gauges, Granite Surface Plate, Rigging Skates, Plate Lifting Clamps, Come-A-Longs, Shackles, Cantilever Racking, Pallet Racking



2003 FORD SUPER DUTY F-250 LARIAT PICK UP



VIEW OF CANTILEVER RACKING



KAESER 30 HP ROTARY SCREW COMPRESSOR & DRYER



VIEW OF TOOL CHESTS



VIEW OF CONTAINERS



KAESER SM11 10 HP ROTARY SCREW COMPRESSOR/DRYER



VIEW OF TOOLING



VIEW OF POWER TOOLS



FLAT DECK TRAILER

For auction inquiries, please contact Frank DiSalvo at (631) 249-5566 or frank@prestigeequipment.com



Bidding Available Through
BidSpotter

View our current auction schedule at www.prestigeequipment.com

SALE CLOSING

Tuesday, March 24, at 10 AM ET

ASSET LOCATION

2902 E. Sligh Avenue
Tampa, FL 33610

INSPECTION

Monday, March 23, from 9 AM to 4 PM ET, or by appointment

REMOVAL

All items must be removed by Friday, April 10. All removal is strictly on an appointment only basis. All rigging services must be completed by the exclusive site rigger, Foreman's Machinery Movers. Please contact Foreman's Machinery Movers directly to contract rigging services.

TERMS OF SALE

An 18% Buyer's Premium will be charged on all assets purchased by buyers providing full payment is made within 48 hours following the sale. Acceptable forms of payment are cashier's check, company check (with bank letter of guarantee) or wire transfer within 48 hours of the sale close. For any Buyers failing to pay within the 48 hour stated payment period, the Buyer's Premium will be increased to 20%. All invoices paid with a credit card are subject to a 20% Buyer's Premium, and credit card payments are only allowed up to a maximum of \$2,000 per auction. Everything will be sold to the highest bidder, in accordance with the Auctioneer's customary "Terms of Sale", copies of which will be posted on the Auctioneer's website and subject to additional terms announced the day of sale. All items are sold "As is, Where is" without any warranty, express or implied.

FURTHER INFORMATION

For auction inquiries, please contact Jennifer Reiner at (847) 545-6374 or jennifer@perfectionindustrial.com.

To discuss your requirements for an auction, please call Prestige Equipment +1-631-249-5566