

# 2-DAY AUCTION EVENT

## COMPLETE CNC MACHINING & GRINDING FACILITY



### DAY 1 – LIVE WEBCAST AUCTION: Tuesday, April 29<sup>th</sup>, 11:00 AM ET

Featuring (2) 2021 Mazak FJV-35/60 Double Column CNC Vertical Machining Centers, (2) 2014 Mazak FJV-35/60 Double Column CNC Vertical Machining Centers, 2012 Haas VF-6/50 Vertical Machining Center, (2) Hamai CNC Duplex Mills, (2) Hyd-Mech H40-60 Horizontal Band Saws, (7) Blanchard Rotary Surface Grinders, Mattison Horizontal Surface Grinders, (2) Shibaura BT-10B Horizontal Boring Mills, Mazak HMCs, Tarus CNC Gun Drill, 2021 Haimer Uno Tool Presetter, Complete Toolroom, Air Compressors, Overhead & Jib Cranes, Forklifts, and Much More!



### DAY 2 – ONLINE AUCTION: Wednesday, April 30<sup>th</sup>, 11:00 AM ET

Featuring 2021 Faro 41000 Portable Coordinate Measuring Machine, Complete Inspection Department with Micrometers, Height Gauges, Calipers, Granite Surface Plates, Heavy Duty Tables and Workbenches, (40+) Vidmar Cabinets, Boring Bars, Drills, Inserts, Power Tools, Vises, Lifting Magnets, Rigging Supplies, Dump Hoppers, Ladders, Rolling Cabinets, Large Quantity of Raw Steel Material and Scrap Opportunity, Office Furniture and Much More!



MAZAK FJV-35/60 DOUBLE COLUMN CNC VERTICAL MACHINING CENTER



HAAS VF6/50 CNC DUAL PALLET VERTICAL MACHINING CENTER



MAZAK FJV-35/60 II DOUBLE COLUMN CNC VERTICAL MACHINING CENTER



HYD-MECH H40-60 HORIZONTAL BAND SAWS



BLANCHARD 42D-84 84" ROTARY SURFACE GRINDER



HAMAI 6DS-A CNC DUPLEX MILLING MACHINE

Assets Location: Harrisburg, Pennsylvania

Inspection: Monday, April 28<sup>th</sup> 9:00 AM ET - 3:00 PM ET or By Appointment

Contact **Adam Herman** For More Info at **631-249-5566** or **adam.herman@prestigeequipment.com**

PRESTIGE EQUIPMENT AUCTIONS  
35 Pinelawn Road, Suite 203W,  
Melville, NY 11747  
Phone: 631-249-5566  
auctions@prestigeequipment.com  
www.prestigeequipment.com



In Conjunction  
With:

**HOLLAND**  
INDUSTRIAL GROUP

# DAY 1: CNC VERTICAL MACHINING CENTERS

2021

2 AVAILABLE



2APC PALLET CHANGER

MAZAK FJV-35/60 DOUBLE COLUMN CNC VERTICAL MACHINING CENTER

## MAZAK DOUBLE COLUMN CNC VERTICAL MACHINING CENTERS

(2) 2021 MAZAK FJV-35/60 CNC DOUBLE COLUMN, DUAL PALLET VERTICAL MACHINING CENTER, Mazatrol SmoothG CNC Control, Travels: X-59.06", Y-31.5", Z-25.98", Dual 68.5" x 29.53" Tables, 33.9" Between Columns, Spindle Speeds to 10,000 RPM, 60-Position Automatic Tool Changer, CAT 50 Taper, 50 HP Spindle Motor, Renishaw OMI-2 and OMP60M Probe, Thru-Spindle Coolant, Tsubakimoto Mayfran CT20AR Chip Conveyor/Coolant Filtration System, Habor HBO-1000P2TSBM8 Oil Chiller, Mazak Superflow V8M 1000 High Pressure Coolant Pump, Losma Galileo Extra GX1000 Mist Collector, S/N 323411 & S/N 323410 [2021]

(2) MAZAK FJV-35/60 II CNC DOUBLE COLUMN, DUAL PALLET VERTICAL MACHINING CENTER, Matrix Nexus 2 CNC Control, Travels: X-59.06", Y-31.5", Z-25.98", Dual 68.5" x 29.53" Tables, 33.9" Between Columns, Spindle Speeds to 10,000 RPM, 60-Position Automatic Tool Changer, CAT 50 Taper, 50 HP Spindle Motor, Renishaw Renishaw OMI-2 and OMP60M Probe, Thru-Spindle Coolant, Tsubakimoto Mayfran CT20AR Chip Conveyor/Coolant Filtration System, Habor HBO-1000P2TSBM8 Oil Chiller, Mazak Superflow V8M 1000 High Pressure Coolant Pump, S/N 255131 & S/N 255130 [2014]

MAZAK FJV-35/60 CNC DOUBLE COLUMN, DUAL PALLET VERTICAL MACHINING CENTER, MAZATROL M-PLUS CNC CONTROL, TRAVELS: X-59.06", Y-31.5", Z-25.98", Dual 69"x 29" Tables, 2APC Pallet Changer, 60-Position Automatic Tool Changer, 60-Position Automatic Tool Changer, CAT 50 Taper, Tool Probe, Chip Conveyor, S/N 136060 [1998]

2012



2APC PALLET CHANGER

HAAS VF6/50 CNC DUAL PALLET VERTICAL MACHINING CENTER

## CNC VERTICAL MACHINING CENTER

2012 HAAS VF-6/50 CNC VERTICAL MACHINING CENTER, X-64", Y-32", Z-30", with Midaco Series A60DSD 2APC Pallet Changer, (2) 64"x 28" T-Slotted Tables with 69"x 29" Drilled & Tapped Fixture Tables, 30-Position Side-Mounted Automatic Tool Changer, Renishaw OTS Probe, CAT 50 Taper, 40 HP Vector Drive, Hennig 6" Chip Conveyor, Coolant Filtration System, S/N 1095329 [2012]

2014

2 AVAILABLE



2APC PALLET CHANGER

MAZAK FJV-35/60 II DOUBLE COLUMN CNC VERTICAL MACHINING CENTER

# DAY 1: SAWS, CNC GUN DRILLS & HBMs

**2 AVAILABLE**



**HYD-MECH H40-60 HORIZONTAL BAND SAWS**



**DAITO ST5070C 20" HYDRAULIC HORIZONTAL BANDSAW**

## SAWS

**(2) HYD-MECH H40-60 HORIZONTAL BAND SAW, 40" H x 60" W Capacity, 20 HP, 3" Blade, 50,000 Lb. Work Load Capacity, 64" x 200" Roller Conveyor, s/n-F0198021 & s/n-F0398024**

**DAITO ST5070C 20" HYDRAULIC HORIZONTAL BANDSAW, 17'10-1/2" Saw Blade, s/n- 138AA106B6**

**OLIVER 879 PLATE SAW, 8" Plate Thickness Capacity, 156" Wide Opening, Dust Collection System, 10HP Hydraulic Power Unit, Lubriquip Trabon Maxi-Monitor Mark III Universal Controller, Touch Screen HMI, s/n- 203827**



**OLIVER 879 PLATE SAW**



**TOSHIBA BT-10BR3 TABLE-TYPE HORIZONTAL BORING MILL**



**TOSHIBA BT-10BR3 TABLE-TYPE HORIZONTAL BORING MILL**

## HORIZONTAL BORING MILLS

**TOSHIBA BT-10BR3 TABLE-TYPE HORIZONTAL BORING MILL, 4" Spindle, Travels: X-70.87", Y-57", Z-28", W-57", 55" x 63" Built-In Rotary Table, Spindle Speeds to 1,000 RPM, Pendant Control, SWI Trak 103 DRO, 15 HP Spindle Motor, Coolant System, s/n- 6768**

**TOSHIBA BT-10BR3 TABLE-TYPE HORIZONTAL BORING MILL, 4" Spindle, Travels: X-70.87", Y-57", Z-28", W-57", 55" x 63" Built-In Rotary Table, Spindle Speeds to 1,000 RPM, Pendant Control, SWI Trak 103 DRO, 15 HP Spindle Motor, Coolant System, s/n- 6756**

## CNC GUN DRILL

**TARUS TPSXGD4896 CNC GUN DRILL, GE Fanuc 21i-M CNC Control, 1.5" Drilling Diameter Capacity, 96" x 55" Table, Travels: X-96", Y-48", Approx. 72" Drill Stroke, Gun Drill Spindle Speed to 4,000 RPM, Dual Auxiliary Spindle (Ream & Tap Heads), s/n- TPSXGDCNC 677086200**



**GE FANUC 21i-M CNC**

**TARUS TPSXGD4896 CNC GUN DRILL**

# DAY 1: ROTARY SURFACE GRINDERS & CNC DUPLEX MILLS

## ROTARY SURFACE GRINDERS

**BLANCHARD 42D-84 84" ROTARY SURFACE GRINDER**, 84" Mag Chuck, Approx 32" Under Wheel, Elmatco Neutrol II Magnetic Chuck Controller, Foster 7-1/2HP Hydraulic Power Unit, Bijur Delimon and Trabon Auto Lubricators, Polytech PD6004300P External Coolant Filtration System, s/n-14477

**BLANCHARD 48-84 84" ROTARY SURFACE GRINDER**, 84" Mag Chuck, Approx 32" Under Wheel, Magna-Flux Magnetic Chuck Controller, Graco Auto Lubricator, External Coolant, s/n- 13201

**BLANCHARD 42D-72 72" ROTARY SURFACE GRINDER**, 72" Mag Chuck, Approx 32" Under Wheel, Elmatco Neutrofier II Magnetic Chuck Controller, Bijur and Lubriquip Auto Lubricators, Polyclon External Coolant Filtration System, s/n-13835

**BLANCHARD 32-60 60" ROTARY SURFACE GRINDER**, 60" Mag Chuck, Approx 16" Under Wheel, Elmatco Neutrofier III Magnetic Chuck Controller, Trabon Modu-Flo and Bijur Auto Lubricators, External Coolant System, s/n- N/A

**BLANCHARD 22-42 42" ROTARY SURFACE GRINDER**, 42" Magnetic Chuck, Approx 9" Under Wheel, Elmatco Neutrol II Magnetic Chuck Controller, Lubriquip and Bijur Lubricators, s/n- 15136

**BLANCHARD NO. 18-42 42" ROTARY SURFACE GRINDER**, 42" Magnetic Chuck, Approx 9" Under Wheel, Elmatco Neutrol II Magnetic Chuck Controller, External Coolant System, s/n- 8275

**BLANCHARD NO. 18D 36" ROTARY SURFACE GRINDER**, 36" Magnetic Chuck, Approx 9" Under Wheel, Elmatco Neutrol II Magnetic Chuck Controller, Trabon and Bijur Lubricators, Polycon External Coolant Filtration System, s/n- 10753

1 OF 3



**84" MAG CHUCK**

**BLANCHARD 42D-84 84" ROTARY SURFACE GRINDER**



**60" MAG CHUCK**

**BLANCHARD 32-60 60" ROTARY SURFACE GRINDER**



**42" MAG CHUCK**

**BLANCHARD 22-42 42" ROTARY SURFACE GRINDER**



**FANUC O-M CNC**

**HAMAI 6DS-A CNC DUPLEX MILLING MACHINE**



**FANUC O-M CNC**

**HAMAI 4DS-A-APC CNC DUPLEX MILLING MACHINE**

## CNC DUPLEX MILLS

**HAMAI 6DS-A CNC DUPLEX MILLING MACHINE**, Fanuc O-Mate-M CNC Control, 50" Between Spindles, 40" x 40" Rotary Table on 88.6" x 23.6" Main Table, Chip Augers, 2.2kw Hydraulic Power Unit, s/n- 6006 [1998]

**HAMAI 4DS-A-APC CNC DUPLEX MILLING MACHINE**, Fanuc O-Mate-M CNC Control, 39" Between Spindles, (2) 32" x 32" Rotary Tables on Main 78.7" x 19.7" Table, Chip Augers, 2.2kw Hydraulic Power Unit, DC Dimplex IndyKool Chiller, s/n-1010 [1999]

# DAY 1: HORIZONTAL SURFACE GRINDERS & MAZAK CNC HMCS



**REBUILT BY  
DIAL INDUSTRIES**

**MATTISON 36" X 96" HYDRAULIC HORIZONTAL SURFACE GRINDER**



**MATTISON 36" X 72" HYDRAULIC HORIZONTAL SURFACE GRINDER**



**KENT SGS-S2460AHD 60" X 24" HYDRAULIC HORIZONTAL SURFACE GRINDER**

## HORIZONTAL SURFACE GRINDERS

**MATTISON 42" X 96" HYDRAULIC HORIZONTAL SURFACE GRINDER, (2) 48" x 42" Electromagnetic Chucks, 36" Under Wheel, Updated KPM KP5 Controls, Flux-Power Magnetic Chuck Controller, 40HP Hydraulic Power Unit, External Coolant Filtration System with 40" Paper Filter and Chiller, s/n- 22451 (Out of Service)**

**MATTISON 36" X 96" HYDRAULIC HORIZONTAL SURFACE GRINDER, (2) 48" x 36" Electromagnetic Chucks, 36" Under Wheel, Heidenhain DRO, Magna-Flux Chuck Controller, Travatrol Controller, 40 HP Hydraulic Power Unit, External Coolant System, Rebuilt by Dial Industries, s/n- 23901**

**MATTISON 36" X 72" HYDRAULIC HORIZONTAL SURFACE GRINDER, (2) 36" x 36" Electromagnetic Chucks, 42" Under Wheel, Magna-Flux Chuck Controller, Travatrol Controller, 40HP Hydraulic Power Unit, External Coolant Filtration System with 33" Paper Filter, 24" Oil Separator, and Chiller, s/n- 24195**

**MATTISON 30" X 72" HYDRAULIC HORIZONTAL SURFACE GRINDER, (2) 36" x 30" Electromagnetic Chucks, 36" Under Wheel, Elmatco Neutrol II Chuck Controller, Travatrol Controller, 10HP Hydraulic Power Unit, External Coolant System, s/n- 21793**

**KENT SGS-S2460AHD 60" X 24" HYDRAULIC HORIZONTAL SURFACE GRINDER, Kanetsu 60" x 24" Electromagnetic Chuck, Newall Topaz Mill DRO, 5HP Hydraulic Power Unit, Ying Wei PF-20 Paper Filtration Unit, s/n-91169 [2002]**

## MAZAK CNC HORIZONTAL MACHINING CENTERS

**MAZAK FH 8800 4-AXIS CNC HORIZONTAL MACHINING CENTER, Mazatrol PC-Fusion 640M CNC Control, Travels: X-51", Y-43", Z-39", (2) 32" x 32" Pallets, 120-Position Automatic Tool Changer, CAT 50 Taper, Chip Conveyor, SN 145668 [1999]**

**MAZAK ULTRA 650X CNC HORIZONTAL MACHINING CENTER, Mazatrol M-Plus CNC Control, Travels: X-40", Y-31.5", Z-31", (2) 24.75" x 24.75" Pallets, 80-Position Automatic Tool Changer, CAT 50 Taper, Chip Conveyor, S/N 129024 [1997]**

**MAZAK H800 CNC HORIZONTAL MACHINING CENTER WITH (6) APC, Mazatrol M32 CNC Control, Travels: X-49", Y-39", Z-33", (6) 32" x 32" Pallets, 120-Position Automatic Tool Changer, CAT 50 Taper, Chip Conveyor, S/N 111678 [1994]**

**MAZAK H800 CNC HORIZONTAL MACHINING CENTER, Mazatrol M32 CNC Control, 49" x 39" x 33" Travels, (2) 32" x 32" Pallets, 120-Position Automatic Tool Changer, CAT 50 Taper, Chip Conveyor, S/N 92750 [1990]**



**5APC PALLET POOL!**

**MAZAK FH 8800 4-AXIS CNC HORIZONTAL MACHINING CENTER**



**MAZAK H800 CNC HORIZONTAL MACHINING CENTER**



**MAZAK ULTRA 650X CNC HORIZONTAL MACHINING CENTER**



**MAZAK H800 CNC 6APC HORIZONTAL MACHINING CENTER**

# DAY 1: CNC TOOL & CUTTER GRINDERS, TOOL SETTER & MORE

2021



**HAIMER UNO 20/40 MICROSET 50 TAPER TOOL SETTER**

## CNC TOOL & CUTTER GRINDERS & DRILL GRINDERS

**WALTER HELITRONIC POWER 5-AXIS CNC TOOL GRINDER**, Walter HMC 500 WWM Controller, 36" Paper Coolant Filtration Unit, UAS Mist Collector, Spare Parts, Servo Drives, Pump, Spindle Kit, etc. s/n- 6738 [1997]

**RUSH MACHINERY 250A DRILL TOOL GRINDER**, 6-1/2" 6-Jaw Chuck, 1/2HP

**JUNGNER MASKIN US-2305 UTG-214 UNIVERSAL TOOL & CUTTER GRINDER**, 24-1/2" x 4-1/2" T-Slotted Table, Motorized Tool Grinding Fixture, Misc. Tooling, 220V 3PH, s/n- 2791



**WALTER HELITRONIC POWER 5-AXIS CNC TOOL GRINDER**



**RUSH MACHINERY 250A DRILL TOOL GRINDER**



**JUNGNER MASKIN US-2305 UTG-214 UNIVERSAL TOOL AND CUTTER GRINDER**

## TOOL SETTER

**2021 HAIMER UNO 20/40 MICROSET 50 TAPER TOOL SETTER**, Haimer ZTP-913 Spindle No. Haimer Microvision V7.5.0.24 Software, Brother Label Printer, Prolite T2252MSC Touchscreen Monitor, Terra i5 Computer, s/n- 99582013228 [2021]

2021



**AB WRAPPER TORNADO 80" PALLET WRAPPER**

## TORNADO WRAPPING MACHINE

**2019 TAB WRAPPER TORNADO 80" PALLET WRAPPER**, 9' x 4'2" x 8'6" Dimensions, 2,000Lb. Weight, 480V, s/n- 111219WT80



**K. MARTIN TYPE DLZ 702 28" X 45" ENGINE HEAD LATHE**

## TOOLROOM, WELDERS & MISCELLANEOUS EQUIPMENT

**1960 K. MARTIN TYPE DLZ 702 28" X 45" ENGINE HEAD LATHE**, 14-630RPM Spindle Speed, 2-1/2" Hole Through Spindle, with 13" 3-Jaw Chuck, Tool Post, Tailstock, Mitutoyo KA-200counter DRO, s/n- 13188

**CLAUSING NO. 1401 APPROX. 14" X 48" ENGINE HEAD LATHE**, 45-2000RPM Spindle Speed, 1-1/4" Hole Through Spindle, 68" Bed Length, with 14" Faceplate, 10" 4-Jaw Chuck, 8" 3-Jaw Chuck, Tool Post, Tailstock

**AMERICAN HOLE WIZARD 4' X 15" RADIAL ARM DRILL**, 55" x 36" T-Slotted Base, Approx. 28" x 24" x 17" T-Slotted Box Table, 16" Stroke, 25-2000RPM Spindle Speed

**OOYA RE-1225H 4'X15" RADIAL ARM DRILL**, 48" x 25-1/2" T-Slotted Base, Approx 28" x 18" x 16" T-Slotted Box Table, 12" Stroke, 38-1985RPM Spindle Speed, s/n- N77L-4504



**CLAUSING NO. 1401 14" X 48" ENGINE HEAD LATHE**



**AMERICAN HOLE WIZARD 4' X 15" RADIAL ARM DRILL**



**OOYA RE-1225H 4' X 15" RADIAL ARM DRILL**

# DAY 1: ROLLING STOCK, CRANES & AIR COMPRESSORS



VIEW OF ROLLING STOCK

## ROLLING STOCK

- (2) CAT 2C6000 5,750LB. LP FORK TRUCK, 185" Mast, 48" Forks, Tilt and Side Shift, Solid Rubber Tires, 10,210Lb. Truck Weight, 3286Hrs. s/n- AT83F40640**
- 2006 JLG 2030ES 24V ELECTRIC PLATFORM SCISSOR LIFT, 126" x 30" Extended Platform, 20' Max Platform Height, 800Lb. Capacity, 3700Lb. Truck Weight, 396 Hrs. s/n- 0200150155**
- JUNGHEINRICH EJE 120 US 4,500LB. 24V ELECTRIC PALLET TRUCK, Integrated Battery Charger, Option 3311567, s/n- 98319576**
- BARRETT EWP45 500 4,500LB. 24V ELECTRIC PALLET TRUCK, Integrated Battery Charger, s/n- L40-13679**

## CRANES

- ACCO 10-TON DOUBLE LEG TRACK GANTRY CRANE**
- (2) HARRINGTON 3-TON FREE STANDING OVERHEAD BRIDGE CRANE**
- ACCO 2-TON BRIDGE CRANE**
- (10) FLOOR-MOUNTED JIB CRANES UP TO 3-TON CAPACITY**
- (12) COLUMN-MOUNTED JIB CRANES**



ACCO 2-TON BRIDGE CRANE



SPANCO 2-TON WALL BRACKET I-BEAM MOUNTED JIB CRANE



HARRINGTON 3-TON FREE STANDING OVERHEAD BRIDGE CRANE



ACCO 10-TON DOUBLE LEG TRACK GANTRY CRANE



ABELL-HOWE 3-TON FREE STANDING JIB CRANE



MILLER MILLERMATIC 211 AUTO-SET WITH MVP 120/230V WIRE WELDERSTOCK



LINCOLN ELECTRIC IDEALARC DC-250 CV/CC DC ARC WELDING POWER SOURCE

## AIR COMPRESSORS

- 2014 GARDNER DENVER COMPAIR L75RS-13A 75KW ROTARY SCREW AIR COMPRESSOR, 13.99 Cubic Meters/ Min, 13 Bar Stage Pressure, 61689 Load Hrs., 460V, s/n- CD10018264001**
- AIRCEL VF-500 REFRIGERATED COMPRESSED AIR DRYER, 500 SCFM, 175 Max PSI, 140 F Max Inlet Temperature, 460V, s/n- V1SJXB4204**
- GARDNER DENVER ELECTRA-SAVER II ECMQLB 75HP ROTARY SCREW AIR COMPRESSOR**



GARDNER DENVER COMPAIR L75RS-13A 75KW ROTARY SCREW AIR COMPRESSOR



AIRCEL VF-500 REFRIGERATED COMPRESSED AIR DRYER



GARDNER DENVER ELECTRA-SAVER II ECMQLB 75HP ROTARY SCREW AIR COMPRESSOR

# DAY 2: QC, INSPECTION DEPARTMENT, TOOLING & MORE

2021

## QUALITY CONTROL & INSPECTION DEPARTMENT

2021 FARO 41000 PORTABLE CMM, Part. No. ARM-0010-7FB, 20 Micron Pform, 10 Micron Psize, 40 Micron Ldia, 25 Micron Euni, with Storage Case, Probe Heads, Mounting Ring Base

TRU-STONE 71" X 53" X 12" GRANITE SURFACE TABLE with Barry Vibration Shock Serva-Levl Vibration Isolation System

(2) MITUTOYO VERNIER CALIPERS, 40" and 18"

MICROMETERS, GAGE SETS AND MUCH MORE!



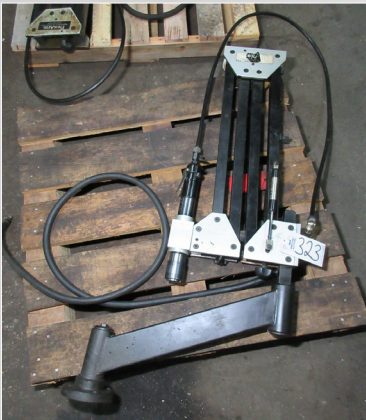
FARO 41000 PORTABLE CMM



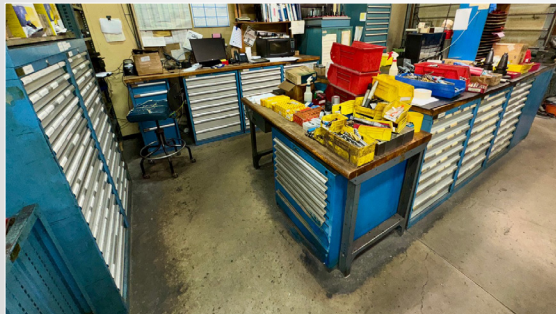
TRU-STONE 71" X 53" X 12" GRANITE SURFACE TABLE



(2) MITUTOYO VERNIER CALIPERS



FLEXARM 4' ARTICULATING PNEUMATIC TAPPING ARM



VIEW OF VIDMAR TOOL CABINETS



VIEW OF LIFTING MAGNETS



VIEW OF RAW STEEL



VIEW OF ANGLE PLATES

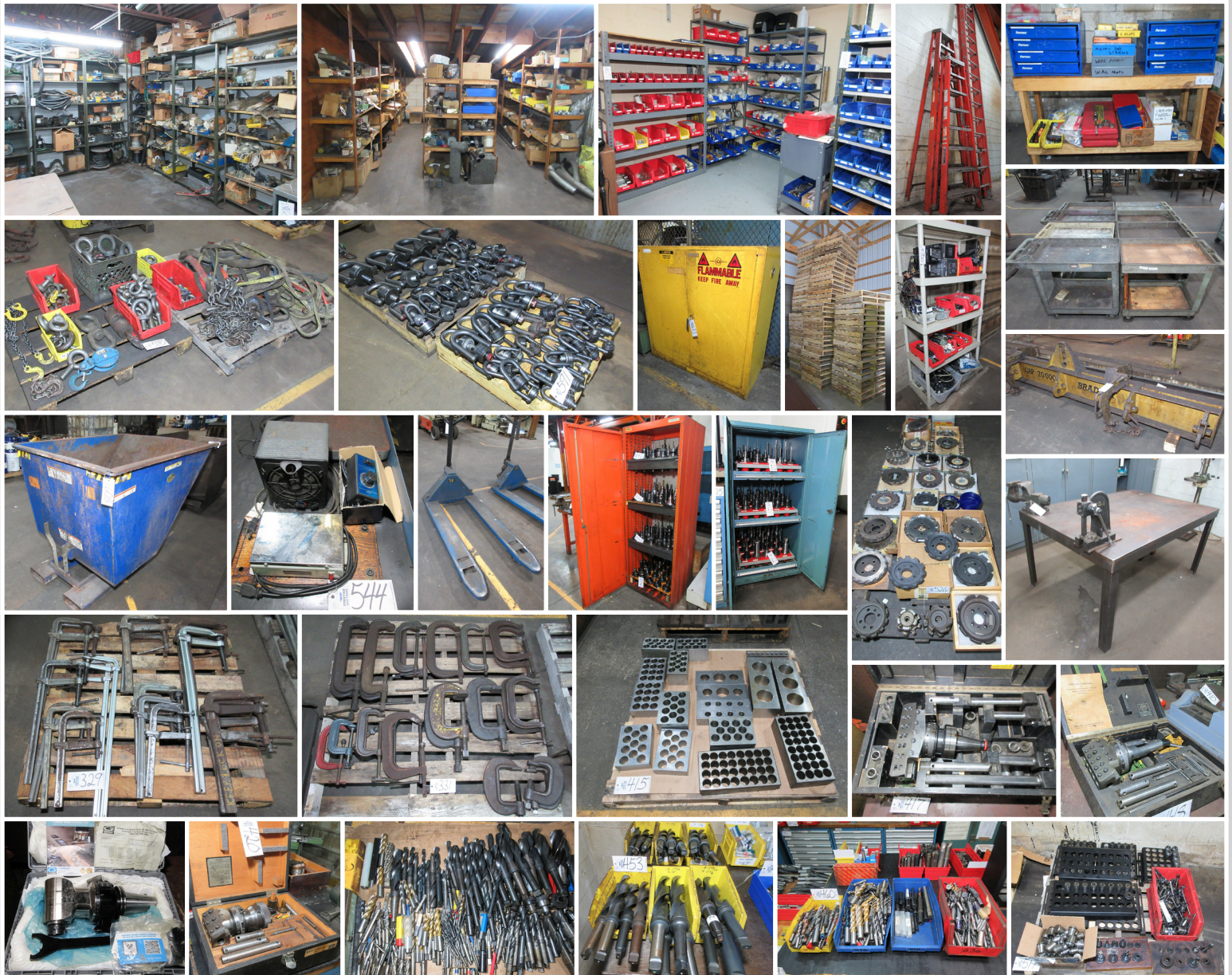


LARGE QUANTITY OF CAT 50 TOOL HOLDERS





# DAY 2: MISCELLANEOUS TOOLING & MORE



## 2-DAY AUCTION EVENT

# COMPLETE CNC MACHINING & GRINDING FACILITY



**DAY 1 – LIVE WEBCAST AUCTION:** Tuesday, April 29<sup>th</sup>, 11:00 AM ET

**DAY 2 – ONLINE AUCTION:** Wednesday, April 30<sup>th</sup>, 11:00 AM ET

Inspection: Monday, April 28th 9:00 AM ET - 3:00 PM ET or By Appointment

Contact **Adam Herman** For More Info at **631-249-5566** or **adam.herman@prestigeequipment.com**

**PRESTIGE EQUIPMENT AUCTIONS**  
35 Pinelawn Road, Suite 203W,  
Melville, NY 11747  
Phone: 631-249-5566  
auctions@prestigeequipment.com  
www.prestigeequipment.com



In Conjunction  
With:

**HOLLAND**  
INDUSTRIAL GROUP

View Full Lot Catalog & Information at: [www.prestigeequipment.com/auction/mold-base-industries/](http://www.prestigeequipment.com/auction/mold-base-industries/)