

ONLINE AUCTION

**OVER
800 LOTS!**

Rex Companies, Inc. –

COMPLETE CNC FABRICATION & MACHINE SHOP



Tuesday, March 18 at 10:00 AM ET **Location: Newport News, Virginia**

FEATURING 2019 BYSTRONIC 4KW FIBER LASER WITH BYLOADER3015, DYTAN MATERIAL STORAGE RACK AND DELIVERY SYSTEM, ACCURPRESS 7254 5-AXIS CNC PRESS BRAKE, TRUMPF V1300 8-AXIS CNC PRESS BRAKE, PRESS BRAKE TOOLING, GLEASON PFAUTER PSA300 CNC GEAR SHAPER, MAKINO A99 HORIZONTAL MACHINING CENTER, MAZAK CNC LATHES, (10) MILLER WELDERS, HYPER THERM PLASMA CUTTER, (20) DEMMELER AND ACORN WELDING TABLES AND ACCESSORIES, NORDSON POWDER BOOTH, REMSTAR STORAGE AND RETRIEVAL UNITS, HURCO VMX64 AND VM1 CNC VMCS, ROLLING STOCK, LARGE QUANTITY OF VIDMAR CABINETS, RAW MATERIAL, SHOP SUPPORT AND MORE!

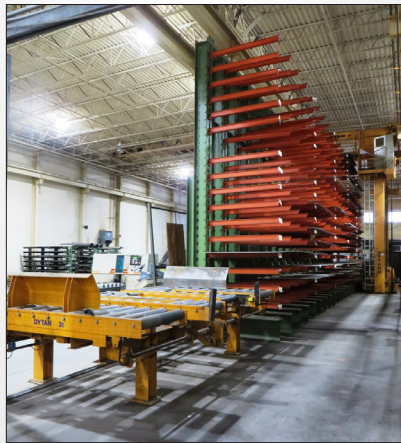
****ACCEPTING
PRE-AUCTION
OFFERS ON
MAJOR
MACHINES****



2019
BYSTRONIC BYSMART 3015 4KW FIBER LASER



8-AXIS CNC
TRUMPF TRUMABEND V1300
CNC PRESS BRAKE



DYTAN TYPE 2002 CANTILEVER
MATERIAL STORAGE & DELIVER
SYSTEM



HURCO VMX64/40T CNC VERTICAL
MACHINING CENTER

Inspection: Monday, March 17 8:00 AM ET - 4:00 PM ET

Contact **Frank DiSalvo** For More Info at **631-249-5566** or **frank@prestigeequipment.com**

PRESTIGE EQUIPMENT AUCTIONS
35 Pinelawn Road, Suite 203W,
Melville, NY 11747
Phone: 631-249-5566
auctions@prestigeequipment.com
www.prestigeequipment.com



In Conjunction
With:



2019



BYSTRONIC BYSMART 3015 4KW FIBER LASER WITH BY-LOADER

FIBER LASER SYSTEM

BYSTRONIC BYSMART 3015 4KW FIBER LASER, 60" x 120" Dual Pallet Changer, Dust Collector, S/N: LA19130-G142 [2019], By-Loader 3015 Material Loader

DYTAN TYPE 2002 CANTILEVER MATERIAL STORAGE AND RETRIEVAL SYSTEM, 2.7 Ton Max. Weight Per Shelf, (5) Sections x (17) Shelves, 5' x 10' Maximum Sheets, 3 Ton Storage and Retrieval Crane System, 3 Ton Material Storage Inlet-Table Roller Conveyor, 3 Ton Material Delivery Cart, S/N: 233.282 (no material)

OVERHEAD CRANE SYSTEM (FREE-STANDING) ½ TON INGERSOL RAND HOIST, Power Bridge, Power Trolley, Pendant Control, Approx. 15' Span, 25' Bridge Travel, 10' Under Hook



DYTAN TYPE 2002 CANTILEVER MATERIAL STORAGE AND DELIVER SYSTEM ½ TON OVERHEAD CRANE SYSTEM



5-AXIS CNC

ACCURPRESS 7254 CNC PRESS BRAKE



8-AXIS CNC

TRUMPF TRUMABEND V1300 CNC PRESS BRAKE

CNC PRESS BRAKES:

TRUMPF TRUMABEND V1300 8-AXIS CNC PRESS BRAKE, 143 Ton, 8.46" Stroke, 120" Overall Bed Length, (6) Axis Back Gauge, Crowning Bed, S/N: B0504A0188 (2006)

ACCURPRESS 7254, 25 Ton 5-Axis Press Brake, 48" Overall Bed Length, ETS 3000 5-Axis CNC Control, 4-Axis Back Gauge, S/N: 9194 (2006)

LARGE QUANTITY OF PRESS BRAKE DIES



MAKINO A99 CNC HORIZONTAL MACHINING CENTER WITH 12-STATION FMS SYSTEM LOAD/UNLOAD

CNC MACHINING CENTERS, CNC TURNING CENTERS & CNC LATHES:

MAKINO A99 CNC HORIZONTAL MACHINING CENTER, Makino Pro 3 CNC Control, 50-Taper Spindle, [16] 31" x 31" Pallets, B-Axis 1 Degree, 12-Station FMS System with Load/Unload, Probing, 188-Position Automatic Tool Changer, Coolant, S/N: A99-104

HURCO VMX64/40T CNC VERTICAL MACHINING CENTER, Hurco Ultimax Dual Screen CNC Control, w/ 34" x 65" Table, X-64", Y-33.9", Z-29.9", Aluminum Sub Plate, 40-Taper Spindle, 40-Position ATC, S/N: H-64078 (2005)

HURCO VM1 CNC VERTICAL MACHINING CENTER, w/ 14" x 30" Table, 40-Taper Spindle, 16-Position Automatic Tool Changer, Hurco Ultimax Dual Screen CNC Control, S/N: HV11776 (2006)

REIDEN BF3L50151 3-AXIS CNC UNIVERSAL BED MILL, w/ 24" x 63" T-Slotted Work Table, Taper Spindle

MAZAK DUAL TURN 20 SPINDLE CNC LATHE, Mazatrol T Plus CNC Control, w/ [2] Kitagawa 8" Chucks, 12.6" Max Swing. 10" Standard Cutting Diameter, 49.21" Distance Between Spindle Faces, 2.4" Spindle Bore, , Spindle Speeds to 4,750 RPM, [2] Collet Chucks, [2] 12-Station ATC, Chip Conveyor, LNS Quick Load Bar Feeder w/ Spindle Liners, 20 HP, S/N: 131660

MAZAK INTEGRIX 35 CNC TURNING CENTER, Mazatrol 640MT CNC Control, w/ 12" 3-Jaw Hydraulic Chuck, 22.64" Swing, 60" Between Centers, B-Axis +/- 90 Degrees, C-Axis .01 Degree, 6,000 RPM, 40 ATC, Tailstock, Chip Conveyor, LNS Quick Load Servo S2 Magazine Bar Feeder, Spindle Liners, S/N: 144586



HURCO VMX-64 CNC VERTICAL MACHINING CENTER



HURCO VM-1 CNC VERTICAL MACHINING CENTER



MAZAK INTEGRIX 35 CNC TURNING CENTER



MAZAK DUAL TURN 20 SPINDLE CNC LATHE



GLEASON-PFAUTER PSA300 CNC GEAR SHAPER

CNC GEAR SHAPER:

GLEASON PFAUTER PSA300 CNC GEAR SHAPER, Siemens Sinumerik CNC Control, 300 mm Max Workpiece Diameter, 6 mm Max Module, 1000 kg. Max Workpeice Weight, Coolant, S/N: 13165 (2000)



CHEVALIER FSG-2460TX HORIZONTAL SURFACE GRINDER

GRINDING & FINISHING EQUIPMENT:

CHEVALIER FSG-2460TX HORIZONTAL SURFACE GRINDER, 24" x 48" Magnetic Chuck, O.S. Walker Control, Coolant, S/N: J485C001

SHIGIYA G-30ND CNC CYLINDRICAL GRINDER, Fanuc Series 18-T CNC Control, 11.81" Swing, 39.4" Between Centers, 150 kg Weight Capacity, S/N: 070266

FILTER 1 DUSTRON DEBURRER & GRIND DUST FILTRATION BOOTH, Approx. 24' Wide x 17' Deep x 7-1/2' High, S/N: 9-28-238

TRINCO 48/BP 2-HOLE REACH-IN TYPE SHOT BLAST CABINET, w/ Reclaim, S/N: 66098-8

TIMESAVERS 3121-13-04 SERIES 3100 36" PASS THROUGH WET / DRY BELT SANDER, w/ E700 Control, S/N: 251372HDCMW10 (2006)



FILTER 1 DUSTRON DEBURRER & GRIND DUST FILTRATION BOOTH



SHIGIYA G-30ND CNC CYLINDRICAL GRINDER



TRINCO 48/BP SHOT BLAST CABINET



TIMESAVERS 3121-13-04 SERIES 3100 36" PASS THROUGH WET / DRY BELT SANDER



MONTGOMERY 4825H INITIAL PINCH TYPE BENDING ROLL



ERCOLINA TB50 TOP BENDER BENDING MACHINE

BENDING ROLL AND TUBE BENDER:

MONTGOMERY 4825H INITIAL PINCH TYPE BENDING ROLL, 4' x 1/4", approx. 6" Roll Diameter, 7.5 HP, 4,600 Lbs. w/ Foot Pedal Forward & Reverse Control & Pedestal Push Button Controls, Digital Readouts, S/N: 094036

ERCOLINA MDL. TB50 TOP BENDER BENDING MACHINE, 2-1/2" Mild Steel Capacity, Foot Pedal Digital Readout Control, Assorted Dies, S/N: 5013146 (2013)



EISENMANN 5-STAGE WASH TREATMENT SYSTEM



NORDSON 15-GUN AUTOMATIC POWDER PAINT BOOTH



EISENMANN MANUAL POWDER SPRAY BOOTH

POWDER COAT PAINT LINE & GLUE EQUIPMENT:

NORDSON 15-GUN AUTOMATIC POWDER PAINT BOOTH, 4' x 7' Opening, Reclaim I Control Integrated Control System

EISENMANN MANUAL POWDER SPRAY BOOTH, Approx. 4' x 6' Opening, Nordson Encore Spray Gun, Gema Easytronic Control Unit, Reclaim

EISENMANN 5-STAGE WASH TREATMENT SYSTEM, w/ Eisenmann Dry CXX, Core Oven, Cool Down System, Conveyor & Hooks, Allen Bradley Panelview Plus 1250 Control

CONTROLLED PYROLYSIS PTR5NT2799 5' WIDE X 6' HIGH X 4' DEEP GAS FIRED CLEANING FURNACE, w/ 300,000 BTU, Control, S/N: N/A

NORDSON MDL. 8102878 VERSAPAIL ADHESIVE MELTER, w/ Digital Readout, S/N: LV10C01303 (2010; New)

NORDSON LS10E PRE-MELTERS, (6) Available, New Never Used



CONTROLLED PYROLYSIS PTR5NT2799 GAS FIRED CLEANING FURNACE



NORDSON 8102878 VERSAPAIL ADHESIVE MELTER



(6) NORDSON LS10E PRE-MELTERS

(2) AVAILABLE



REMSTAR SHUTTLE XP-250-1250X864-UL STORAGE & RETRIEVAL SYSTEM



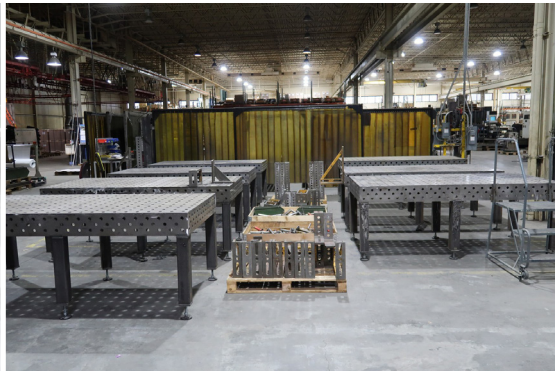
REMSTAR SHUTTLE 1250-X825NT STORAGE & RETRIEVAL SYSTEM

STORAGE & RETRIEVAL SYSTEMS:

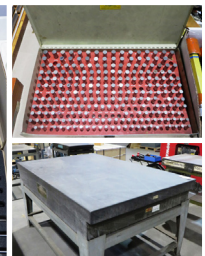
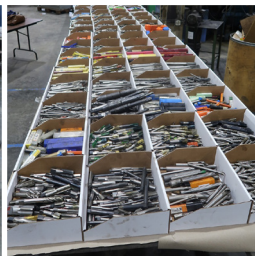
REMSTAR SHUTTLE XP-250-1250X864-UL STORAGE & RETRIEVAL SYSTEM, Approx. [50] Storage Shelves, Digital Control, S/N: 07006032/002 (2007)

REMSTAR MDL. SHUTTLE XP-250-1250X864-UL STORAGE & RETRIEVAL SYSTEM, Approx. [50] Storage Shelves, Digital Control, S/N: 07006032/001 (2007)

REMSTAR SHUTTLE 1250-X825NT STORAGE & RETRIEVAL SYSTEM, Approx. [50] Storage Shelves, S/N: 99.003315/006 (missing parts)



PRECISION WELDING TABLES AND ACCESSORIES



LARGE ASSORTMENT OF TOOLING & INSPECTION



9,000 LB.

TOYOTA 7FBCU45 ELECTRIC FORKLIFT TRUCK



GENIE 2-34/22N ELECTRIC ARTICULATING BOOM LIFT



HINO 268 26' BOX TRUCK



6,500 LB.

YALE FORKLIFT TRUCK



QUINCY QGV-100 100HP ROTARY SCREW TYPE AIR COMPRESSOR



REIDEN BF3L50151 3-AXIS CNC UNIVERSAL BED MILL



KASTO TWIN A2 AUTOMATIC HORIZONTAL BAND SAW



DUMP HOPPERS & TOMBSTONES



VIEW OF MILLER & LINCOLN WELDERS



ONLINE AUCTION

**Rex Companies, Inc. –
COMPLETE CNC FABRICATION
& MACHINE SHOP**



Tuesday, March 18 at 10:00 AM ET **Location: Newport News, Virginia**

Inspection: Monday, March 17 8:00 AM ET - 4:00 PM ET

Contact Frank DiSalvo For More Info at 631-249-5566 or frank@prestigeequipment.com

PRESTIGE EQUIPMENT AUCTIONS
35 Pinelawn Road, Suite 203W,
Melville, NY 11747
Phone: 631-249-5566
auctions@prestigeequipment.com
www.prestigeequipment.com



In Conjunction
With:



View Full Lot Catalog & Information at: www.prestigeequipment.com/auction/rex-companies/