

2-DAY ONLINE AUCTION

AEROSPACE & DEFENSE CNC MACHINING FACILITY

OVER 1,000 LOTS!



DAY ONE: WEDNESDAY, APRIL 17TH AT 11:00 AM ET

FEATURING CNC MACHINE TOOLS AS NEW AS 2019! CNC VERTICAL MACHINING CENTERS, CNC LATHES, CNC BRIDGE MILLS, 5-AXIS CNC HORIZONTAL MACHINING CENTER, COMPLETE TOOLROOM, AIR COMPRESSORS, PLANT SUPPORT AND MORE!

DAY TWO: THURSDAY, APRIL 18TH AT 11:00 AM ET

INSPECTION, SHOP SUPPORT, TOOLING AND PRECISION MACHINE ACCESSORIES

Inspection: Tuesday, April 16th & By Appointment

Location: Claremont, New Hampshire



FANUC ROBODRILL CNC MACHINING CELL WITH ROBOT AND PARTS CONVEYOR



AWEA SP3016 CNC BRIDGE MILLS



DOOSAN DMP500/2SP TWIN SPINDLE CNC VERTICAL MACHINING CENTER



MITSUI SEIKI HU80A 5-AXIS CNC HORIZONTAL MACHINING CENTER



DOOSAN DNM4500 CNC VERTICAL MACHINING CENTER

PRESTIGE EQUIPMENT AUCTIONS
35 Pinelawn Road, Suite 203W,
Melville, NY 11747
Phone: 631-249-5566
auctions@prestigeequipment.com
www.prestigeequipment.com



IN CONJUNCTION
WITH:



**Revelation
Auctions**

DAY 1: FANUC ROBODRILL CNC VERTICAL MACHINING CENTERS

2019



FANUC ROBODRILL CNC MACHINING CELL WITH ROBOT AND PARTS CONVEYOR

FANUC ROBODRILL CNC MACHINING CELL:

2019 FANUC ROBODRILL CNC MACHINING CELL WITH ROBOT AND PARTS CONVEYOR, Consisting Of: (2) 2019 Fanuc Alpha-D21MiB Eco-Plus+ CNC Vertical Machining Centers, Fanuc 31iB CNC Control, 19.68" x 15.7" x 12.99" Travels, 25.59" x 15.7" Table, 21 ATC, Thru-Spindle Coolant, LNS Chip Conveyor, Mist Buster, S/N P196ZK569, P197ZK632 [2019]; Equipped with Fanuc LR Mate 200iD System R-30iB Mate Plus Robot & Conveyor, S/N E19X30242 [2019]

2018



FANUC ROBODRILL ALPHA-D21LiB5 CNC VERTICAL MACHINING CENTER

2017



FANUC ROBODRILL ALPHA-D14MiB5 CNC VERTICAL MACHINING CENTER

2010



FANUC ROBODRILL-MATE CNC VERTICAL MACHINING CENTER

FANUC ROBODRILL CNC VERTICAL MACHINING CENTERS:

2018 FANUC ROBODRILL ALPHA-D21LiB5 CNC VERTICAL MACHINING CENTER, Fanuc 31iB5 CNC Control, 2 APC, 27.55" x 15.7" x 12.99" Travels, [2] 33.46" x 16.14" Tables, 21 ATC, Probe, LNS Chip Conveyor, Mist Buster, S/N: P1832H460

2018 FANUC ROBODRILL ALPHA-D21LiB5 CNC VERTICAL MACHINING CENTER, Fanuc 31iB5 CNC Control, 2 APC, 27.55" x 15.7" x 12.99" Travels, (2) 33.46" x 16.14" Tables, 21 ATC, Probe, LNS Chip Conveyor, Mist Buster [2018]

2008 FANUC ROBODRILL-MATE CNC VERTICAL MACHINING CENTER, Fanuc OiMC CNC Control, 16.14" x 12.2" x 12.99" Travels, 14 ATC, S/N: P076VN387

2009 FANUC ROBODRILL-MATE CNC VERTICAL MACHINING CENTER, Fanuc OiMC CNC Control, 16.14" x 12.2" x 12.99" Travels, 14 ATC, S/N: P075VN364

2010 FANUC ROBODRILL-MATE CNC VERTICAL MACHINING CENTER, Fanuc OiMC CNC Control, 16.14" x 12.2" x 12.99" Travels, 14 ATC, S/N: P075VN365

2009



FANUC ROBODRILL-MATE CNC VERTICAL MACHINING CENTER

2008



FANUC ROBODRILL-MATE CNC VERTICAL MACHINING CENTER

DAY 1: CNC VERTICAL MACHINING CENTERS

2019



TWIN SPINDLE

DOOSAN DMP500/2SP TWIN SPINDLE CNC VERTICAL MACHINING CENTER

2017



FEELER METHODS HV1000 CNC VERTICAL MACHINING CENTER

2011



FEELER METHODS HV1000 CNC VERTICAL MACHINING CENTER

CNC VERTICAL MACHINING CENTERS:

2019 DOOSAN DMP500/2SP TWIN SPINDLE CNC VERTICAL MACHINING CENTER, 40.9" x 20.5" x 23.6" Travels, 47.2" x 20.5" Table, 1763lb. Max Work Weight, 8000 RPM, 25HP, 15.7" Between Spindles, [2] 24 ATC, CAT 40 Taper, Thru-Spindle Coolant, S/N: MV0108-000068

2018 DOOSAN DNM4500 CNC VERTICAL MACHINING CENTER, Fanuc i CNC Control, 31.5" x 17.7" x 20.1" Travels, 39.4" x 17.7" Table, 1320lb. Work Weight, 30 ATC, 40 Taper, HP Coolant, LNS Chip Conveyor, S/N: MV0090-001212

2017 FEELER METHODS HV1000 CNC VERTICAL MACHINING CENTER, Fanuc OiMF Control, 39.4" x 20.5" x 19.9" Travels, 45.3" x 20.5" Table, 1100lb. Work Weight, 30 ATC, 15,000 RPM, Probe, 40 Taper, Chip Conveyor, S/N: HVGX161

2011 FEELER METHODS VMP1100 CNC VERTICAL MACHINING CENTER, Fanuc OiMD Control, 43.3" x 24" x 23.6" Travels, 47.2" x 23.6" Table, 3300lb. Work Weight, 30 ATC, HP Coolant, Probe, 40 Taper, Chip Conveyor, S/N: VNJ1072

2012 DOOSAN DNM500 CNC VERTICAL MACHINING CENTER, Fanuc i CNC Control, 40.15" x 21.26" x 20.07" Travels, 47.24" x 21.26" Table, 8000 RPM, 30 ATC, 40 Taper, HP Coolant, S/N: MV0010-001484

2000 KITAMURA MYCENTER 7X CNC VERTICAL MACHINING CENTER, Fanuc 16iM CNC Control, 60.2" x 25.6" x 27" Travels, 66.9" x 25.6" Table, 30 ATC 10,000 RPM, 40 Taper, Chip Conveyor, S/N: 60329

2005 MATSUURA ES1000V CNC VERTICAL MACHINING CENTER, G-Tech 840DIS CNC Control, 31.49" x 21.65" x 19.68" Travels, 5.27" x 21.65" Table, 30 ATC, 40 Taper, S/N: 16365

MATSUURA MC600VF CNC VERTICAL MACHINING CENTER, Yasnac CNC Control, 23.62" x 16.14" x 18.50" Travels, 20 ATC, 40 Taper, Thru-Spindle Coolant, 10" Tsudakoma 4-Axis Rotary Table, Chip Conveyor, S/N: 960311793

OKUMA & HOWA MILLAC 435V CNC VERTICAL MACHINING CENTER, 16" x 31" T-Slotted Table, 20 ATC, OH-Fanuc-M Control, S/N: 4028

2018



DOOSAN DNM4500 CNC VERTICAL MACHINING CENTER



KITAMURA MYCENTER 7X CNC VERTICAL MACHINING CENTER



MATSUURA ES1000V CNC VERTICAL MACHINING CENTER

DAY 1: CNC LATHES & TURNING CENTER



DOOSAN LYNX 300 CNC LATHE



DOOSAN LYNX 220LMA CNC TURNING CENTER WITH LIVE MILLING

CNC LATHES & TURNING CENTER:

2013 DOOSAN LYNX 300 CNC LATHE, Fanuc i Series CNC Control, Tool Setter, 12-Position Turret, Tailstock, LNS Chip Conveyor, S/N: ML0031-000351

2007 DOOSAN LYNX 220LMA CNC TURNING CENTER, Live Milling, Fanuc Oi-TC Control, 6" Chuck, 12/24-Position Turret, Tailstock, Parts Catcher, Tool Eye, Turbo Chip Conveyor, S/N: L220M0400

2007 DOOSAN PUMA 240C CNC LATHE, Fanuc 21i-TB CNC Control, 10" Chuck, 40" Center Distance, 12-Position Turret, Parts Catcher, Tool Eye, Tailstock, LNS Chip Conveyor, S/N: PM243761

FORTUNE VTURN 26 CNC LATHE, Fanuc 18-T CNC Control, 20.4" Swing, 40" Between Centers, 12" Chuck, Tailstock, Chip Conveyor, S/N: VA1727

1998 CHEVALIER FCL-2480 CNC LATHE, 24" Swing Over Bed, 78.7" Between Centers, 14.5" Swing Over Cross Slide, 12" Chuck, 3.125" Spindle Bore, Tool Post, Tailstock, Anilam 4200T CNC Control



DOOSAN PUMA 240C CNC LATHE



FORTUNE VTURN 26 CNC LATHE



CHEVALIER FCL-2480 CNC LATHE

DAY 1: CNC BRIDGE MILLS / 5-AXIS CNC MACHINING CENTERS & TOOLROOM

2 AVAILABLE



AWEA SP3016 CNC BRIDGE MILLS

CNC BRIDGE MILLS:

2000 AWEA SP3016 CNC BRIDGE MILL, Fanuc CNC Control, 120.5" x 63" x 30" Travels, 118" x 59" Table, 22,000lb. Work Weight, 66.9" Between Columns, 9.4" - 39.4" Spindle Nose-Table Top, 6000-RPM, 50 Taper, 32-Position Automatic Tool Changer, Awea 1200 RPM 90° Angular Head, Chip Conveyor

1997 AWEA SP3016 CNC BRIDGE MILL, Fanuc 0-M CNC Control, 120.5" x 63" x 30" Travels, 118" x 59" Table, 22,000 Lb. Max. Work Weight, 66.9" Between Columns, 9.4" - 39.4" Spindle Nose-Table Top, 6000 RPM, 50 Taper, 32-Position Automatic Tool Changer, Chip Conveyor, S/N: 7193



OKUMA HOWA VMP10 5-AXIS DOUBLE COLUMN VERTICAL MACHINING CENTER



MITSUI SEIKI HU80A 5-AXIS CNC HORIZONTAL MACHINING CENTER



BRIDGEPORT VERTICAL MILLING MACHINE



MITSUI SEIKI J4B DOUBLE COLUMN JIG BORING



REID SURFACE GRINDERS

2 AVAILABLE

5-AXIS CNC MACHINING CENTERS:

2002 MITSUI SEIKI HU80A 5-AXIS CNC HORIZONTAL MACHINING CENTER, Fanuc 150M CNC Control, 47.24" x 37.4" x 35.4" Travels, 2-Station Pallet Changer, [2] 32" x 32" Pallets, Full B-Axis Contouring, 240 ATC, Probe, 50 Taper, Chip Conveyor, 24" Diameter Matsumoto CNC Rotary Table, S/N: 129

OKUMA & HOWA VMP10 5-AXIS DOUBLE COLUMN VERTICAL MACHINING CENTER, Fanuc 15M CNC Control, 2-Axis Swivel Spindle, 64.96" x 39.37" Travels, 36" Built-In Rotary Table, Swivel Spindle, 30 ATC, 50 Taper, S/N: 701



HARDINGE HC AUTOMATIC CHUCKER



TRAK MILLS

DAY 2: INSPECTION, TOOLROOM, MISCELLANEOUS EQUIPMENT



BROWN & SHARPE XCEL 12.20.10 COORDINATE MEASURING MACHINE



RENISHAW EQUATOR BENCH TYPE COORDINATE MEASURING MACHINE



VIEW OF HEIGHT GAUGES



S-T INDUSTRIES 14" BENCH TYPE OPTICAL COMPARATOR



ZOLLER TOOL PRESETTER



VIEW OF INSPECTION EQUIPMENT ROOM



INSPECTION EQUIPMENT:

BROWN & SHARPE EXCEL 12.20.10 COORDINATE MEASURING MACHINE, 112" x 53" Granite Table, 43" Under Rail, Renishaw PH10MQ Probe, S/N: 0598-2516

RENISHAW EQUATOR BENCH TYPE COORDINATE MEASURING MACHINE, Probe Changer

S-T INDUSTRIES 14" BENCH TYPE OPTICAL COMPARATOR, Quadra-Chek 2000 Readout

ZOLLER TYPE U42DE TOOL PRESETTER, S/N: 0020

MITUTOYO QM-HEIGHT 350 DIGITAL HEIGHT GAGE

BROWN & SHARPE MICRO-HITE 600 DIGITAL HEIGHT GAGE

BROWN & SHARPE TESA DIGITAL HEIGHT GAGE

BROWN & SHARPE MICRO-HITE DIGITAL HEIGHT GAGE

DAY 2: TOOLROOM, MISCELLANEOUS EQUIPMENT



BT 30 TAPER TOOL HOLDERS



KURT VISES



BT 40 & 50 TAPER TOOL HOLDERS



RIGHT ANGLE HEADS



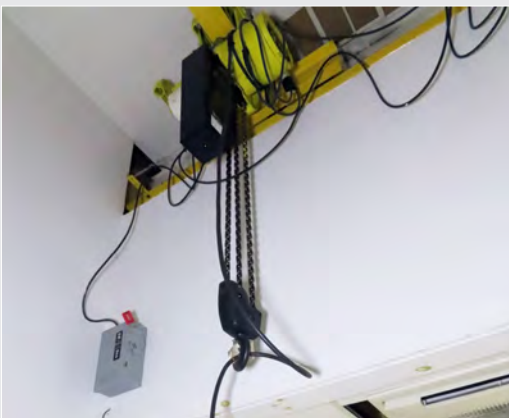
WESCO FORKLIFT JIB



SANDVIK COREBORE TOOL



VERNIER CALIPER



3 TON OVERHEAD CRANE



WILSON HARDNESS TESTER



PIN GAUGE SETS

DAY 2: TOOLING, MATERIAL HANDLING, SHOP SUPPORT



DAEWOO G25S 5000LB CAPACITY
PROPANE FORKLIFT TRUCK



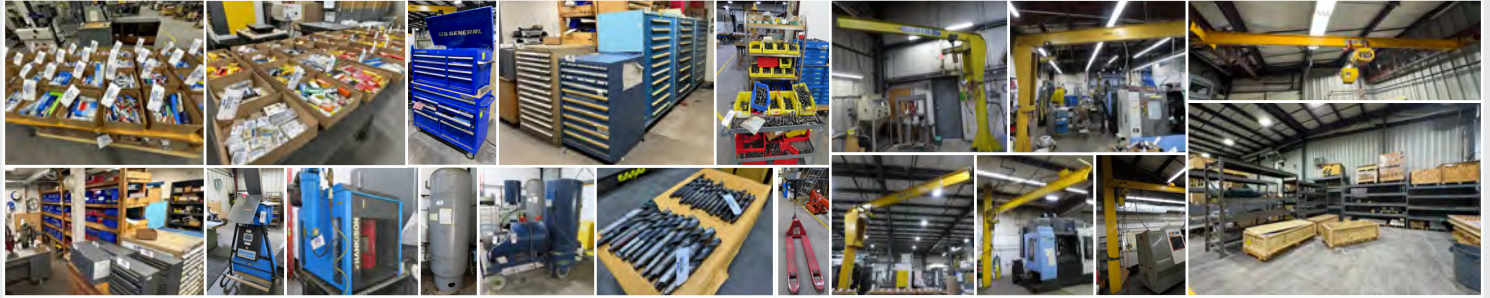
SULLAIR 5500V/A
ROTARY SCREW TYPE
AIR COMPRESSOR



TSUDAKOMA 4TH AXIS
ROTARY INDEXERS



GRANITE SURFACE
PLATES



**29,732± SF INDUSTRIAL
BUILDING AVAILABLE FOR SALE**

**2,500 Amp/3-Phase Power
1 Dock, 3 Drive In**

59 PLAINS ROAD, CLAREMONT, NH 03743

[VIEW BROCHURE](#)

2-DAY ONLINE AUCTION

**OVER
1,000 LOTS!**

AEROSPACE & DEFENSE CNC MACHINING FACILITY



DAY ONE: WEDNESDAY, APRIL 17TH AT 11:00 AM ET

FEATURING CNC MACHINE TOOLS AS NEW AS 2019! CNC VERTICAL MACHINING CENTERS, CNC LATHES, CNC BRIDGE MILLS, 5-AXIS CNC HORIZONTAL MACHINING CENTER, COMPLETE TOOLROOM, AIR COMPRESSORS, PLANT SUPPORT AND MORE!

DAY TWO: THURSDAY, APRIL 18TH AT 11:00 AM ET

INSPECTION, SHOP SUPPORT, TOOLING AND PRECISION MACHINE ACCESSORIES

Inspection: Tuesday, April 16th & By Appointment

Location: Claremont, New Hampshire

PRESTIGE EQUIPMENT AUCTIONS
35 Pinelawn Road, Suite 203W,
Melville, NY 11747
Phone: 631-249-5566
auctions@prestigeequipment.com
www.prestigeequipment.com



IN CONJUNCTION
WITH:

