

2-DAY ONLINE AUCTION



COMPLETE CLOSURE OF HIGH PRECISION PARTNERS

DAY 1: WEDNESDAY, SEPTEMBER 27 @ 11:00 AM ET

**PRE-AUCTION
OFFERS INVITED!**

Late Model CNC Machining & Fabricating Facility

FEATURING: 2019 Amada Ensis 3015 Fiber Laser, 2018 Haas VF-8 CNC Vertical Machining Center, 2014 Mazak QTN350-II MY CNC Turning Center, 2020 Haas ST20 CNC Lathe, (5) Makino and OKK Horizontal Machining Centers, Band Saws, Inspection, Crane System, Complete Toolroom & Grinding Department, Tooling, Plant Support, Ford Box Truck and More!

INSPECTION: Tuesday, September 26th or
By Appointment 9:00AM - 4:00PM ET

ASSET LOCATION: Macedon, New York



DAY 2: THURSDAY, SEPTEMBER 28 @ 11:00 AM ET

**REGISTER NOW
ON BIDSPOTTER!**

Former Chamtek Mfg. Fabricating & Machine Shop

FEATURING: Amada CNC Press Brakes, Flow Waterjet, CNC Vertical Machining Centers, CNC Lathe, Milling, Grinding, Jig Boring, Toolroom, Welding Department, Inspection, Rolling Stock, Plant Support and More!

INSPECTION: Tuesday, September 26th or
By Appointment 9:00AM - 4:00PM ET

ASSET LOCATION: Rochester, New York



PRESTIGE EQUIPMENT AUCTIONS
35 Pinelawn Road, Suite 203W,
Melville, NY 11747
Phone: 631-249-5566
auctions@prestigeequipment.com
www.prestigeequipment.com



IN CONJUNCTION
WITH:



AMADA CNC FIBER LASER, CNC VERTICAL MACHINING CENTER & CNC TURNING CENTERS

2019

3 KW



ONLY 546 CUTTING HOURS

AMADA ENSIS 3015 AJ FIBER LASER

AMADA CNC FIBER LASER:

2019 AMADA ENSIS 3015 AJ FIBER LASER, 3 KW LD Excited YB Fiber Resonator, 61" Y-Axis Travel, 121" X-Axis Travel, 3.93" Z-Axis Travel, 1" Mild Steel Max., ½" Stainless Steel Max., 4,724 IPM Max. Positioning Speed, AMNC 3i CNC Color LCD Touchscreen, Automatic Nozzle Changer, Dual Pallet, Clean Cut Feature, Orion Chiller, Camfil Gold Series X-FLO Dust Collector, S/N AEN30310 [August 2019] [Installed New August 26, 2020 – Only 546 Cutting Hours, 3,975 Hours Power On Time!]

2018



2018 HAAS VF8/40 CNC VERTICAL MACHINING CENTER

CNC VERTICAL MACHINING CENTER:

2018 HAAS VF8/40 CNC VERTICAL MACHINING CENTER, Haas CNC Control with Hand Pendant, X-64", Y-40", Z-30"; Table Size: 64" x 36", Probe, 24-Position ATC, CAT 40 Taper, Spindle Speeds to 10,000 RPM, High Intensity Lighting, Coolant, Chip Auger, S/N 1155396 [2018]

2014



MAZAK QUICK TURN NEXUS 350-11 MY CNC TURNING CENTER

2020



HAAS ST-20 CNC TURNING CENTER

CNC TURNING CENTERS:

2014 MAZAK QUICK TURN NEXUS 350-II MY CNC TURNING CENTER, Matrix Nexus 2 CNC Control, 32.68" Swing, 16.53" Max. Turning Diameter, 60.66" Max. Turning Length, 12" Chuck, 12-Pos. Turret, C-Axis, Live Milling, Y-Axis, Tailstock, Chip Conveyor, S/N 257945 [2014]

2020 HAAS ST-20 CNC TURNING CENTER, Haas CNC Control, 21" Swing, 13" Max. Cutting Diameter, 8" 3-Jaw Chuck, with 6000 RPM ST-10 Spindle, 12-Position Turret, Tailstock, Chip Conveyor, S/N 3119765 [2020]

CNC HORIZONTAL MACHINING CENTERS & CNC SWISS TURNING LATHES

2011



OKK HM600 8APC CNC HORIZONTAL MACHINING CENTER

2005



MAKINO A71 CNC HORIZONTAL MACHINING CENTER

2004



OKK HM600 CNC HORIZONTAL MACHINING CENTER



MAKINO A51/A40 CNC HORIZONTAL MACHINING CENTER



LEBLOND MAKINO A55 DELTA CNC HORIZONTAL MACHINING CENTER

CNC HORIZONTAL MACHINING CENTERS:

2011 OKK HM600 8APC CNC HORIZONTAL MACHINING CENTER, Fanuc 31i-A5 CNC Control, (8) 24.8" x 24.8" Pallets, Travels: X-30.7", Y-29.5", Z-31.5", 160-Position ATC, CAT 50 Taper, Probe, Thru Spindle Coolant, Chip Conveyor, S/N 636, MFG 2092 [2011]

2004 OKK HM600 CNC HORIZONTAL MACHINING CENTER, Fanuc 160iS-MB CNC Control, (2) 24.8" x 24.8" Pallets, Travels: X-30.7", Y-29.5", Z-31.5", 80-Position Automatic Tool Changer, CAT 50 Taper, Probe, Thru Spindle Coolant, Chip Conveyor, S/N 159, MFG MA75557 [2004]

2005 MAKINO A71 CNC HORIZONTAL MACHINING CENTER, with Pro 5 CNC Control, (2) 19.7" x 19.7" Pallets, Travels: X-28.7", Y-28.7", Z-31.5", 60-Position Automatic Tool Changer, CAT 50 Taper, Chip Conveyor [Confirm Taper, TSC]

MAKINO A51/A40 CNC HORIZONTAL MACHINING CENTER, Pro 3 CNC Control, (2) 15.7" x 15.7" Pallets, Travels: X-22", Y-22", Z-19.7", 12,000 RPM, 60-Position ATC, CAT 40 Taper, Chip Conveyor, S/N 02/97

LEBLOND MAKINO A55 DELTA CNC HORIZONTAL MACHINING CENTER, Pro-3 CNC Control, (2) 15.7" x 15.7" Pallets, with 60-Position Automatic Tool Changer, Chip Conveyor, Thru Spindle Coolant, CAT 40 Taper Spindle (Confirm Spindle Problem)

CNC SWISS TURNING LATHES:

2017 CITIZEN A20-3F7 CNC SWISS TURNING LATHE, Cincom CNC Control, 10,000 RPM Main Spindle, 8,000 RPM Back Spindle, Cool Blaster CB510V, Edge Technologies C-320 Automatic Bar Feed, Machine S/N AF6107, MFR No. A320A/1130 [2017]

2010 CITIZEN L20E 1X CNC SWISS TURNING LATHE, 20mm Bar Capacity, 200mm Max. Machining Length (1 Chucking), 10mm Max. Front Drilling Dia., 10,000 RPM Main Spindle, 8000 RPM Back Spindle, Cool Blaster, Royal Mist Collector, Citizen CAV20LE-1S Automatic Bar Feed, MFG. No. L20E/0191, S/N QE0220

CITIZEN L32 CNC SWISS TURNING LATHE, 1-1/4" Bar Dia. Capacity, Back Spindle, Cool Blaster, Mist Collector, Cincom CNC Control, IEMCA Boss 542 Automatic Bar Feed, MFG No. L42532/088, S/N V11039 [1999]

2017



CITIZEN A20-3F7 CNC SWISS TURNING LATHE

2010



CITIZEN L20E 1X CNC SWISS TURNING LATHE



CITIZEN L32 CNC SWISS TURNING LATHE

INSPECTION DEPARTMENT, ROBOT, AND ADDITIONAL EQUIPMENT



ZEISS G2 CONTURA 7/7/6 COORDINATE MEASURING MACHINE



ZEISS DURAMAX 5/5/5 COORDINATE MEASURING MACHINE

INSPECTION DEPARTMENT:

ZEISS G2 CONTURA 7/7/6 COORDINATE MEASURING MACHINE, Measuring range 28"x28"x 24", Travels, Vast XXT Scanning Probe Head, Probe Change Rack, RDS Motorized Head, Calypso Software, S/N 200711501169, Remanufactured and updated by Zeiss 12/7/2015

ZEISS DURAMAX 5/5/5 COORDINATE MEASURING MACHINE, Measuring Range 20" x 20" x 20" Travels, Vast XXT scanning probe head, Calypso Software, 2010, S/N 140537, Zeiss Rebuild Year 2016

HANSFORD RAPID CHECK COORDINATE MEASURING MACHINE, 33" x 54", with Renishaw PH8 Probe, S/N H739

STARRETT HB400 17" OPTICAL COMPARATOR, with 5" x 16" Work Area, S/N 4784

ROCKWELL HR-150A HARDNESS TESTER, S/N 01174

LARGE QUANTITY OF INSPECTION ITEMS INCLUDING: Digital Height Gages, Calipers, Micrometers, Height Gages, Ring Gages, Vidmar Cabinets, Dial Indicators, Granite Surface Plates, Etc.



HANSFORD RAPID CHECK COORDINATE MEASURING MACHINE



STARRETT HB400 17" OPTICAL COMPARATOR



ROCKWELL HR-150A HARDNESS TESTER



HORIZONTAL BAND SAW:

HYD-MECH S-20 SERIES III HORIZONTAL BAND SAW, 13" x 18" Capacity, 1" Blade, 45-330 sfm, Swing Head for Mitering, Roller Conveyor, 3 HP Motor, 240v/60HZ/3PH, FLA-10, S/N: 6B02162130



CLARK GCX-25 FORKLIFT



HAN-TEK 2 TON X 26'4' SPAN CRANE SYSTEM



HYD-MECH S-20 SERIES III HORIZONTAL BAND SAW



2020 PRODUCTIVE ROBOTICS 0B7 COLLABORATIVE ROBOT



BRIDGEPORT SERIES I 2HP KNEE TYPE VERTICAL MILLING MACHINE



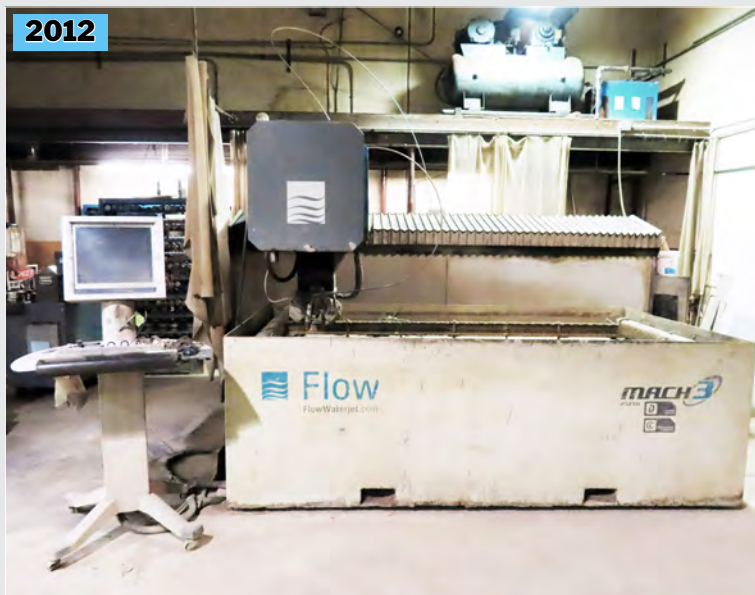
16" X 40" REGENT YSC 1640 AHD HORIZONTAL SURFACE GRINDER

ROBOT:

2020 PRODUCTIVE ROBOTICS 0B7 COLLABORATIVE ROBOT, 7-Joint, 39.37" Reach, 11LB Payload, +/-360 Degree Movement (All Joints), S/N 200139, with Samsung Tablet Controller, S/N 200139

FLOW CNC WATERJET, CNC VERTICAL MACHINING CENTERS, CNC & MANUAL LATHES

2012



FLOW MACH 3B ABRASIVE WATER JET

FLOW CNC WATERJET:

2012 FLOW MACH 3B ABRASIVE WATER JET, 51" x 98.4" Cutting Area, 55,000 PSI, Dynamic Cutting Head, 30 HP Direct Drive HyPlex Hybrid Pump, Flow PC Control, Garnet Abrasive Hopper, S/N 61213591 [2012]

2011



YAMA SEIKI AWEA AV-610 CNC VERTICAL MACHINING CENTER

CNC VERTICAL MACHINING CENTERS:

2011 YAMA SEIKI AWEA AV-610 CNC VERTICAL MACHINING CENTER, with FANUC Oi-MD CNC Control Panel, 24-Position ATC, CAT 40 Taper Spindle, Chip Auger, 27-1/2" x 17-3/4" Table, 10,000 RPM, Harbor Oil Cooler, S/N 610-11046

TREE VMC-1300/20 CNC VERTICAL MACHINING CENTER, with Tree TPC-2100 CNC Control Panel, 20-Position Automatic Tool Changer, CAT 40 Taper Spindle, 19" x 55" T-Slotted Table, Pendant Control, S/N TS130005V

TREE VMC4024 CNC VERTICAL MACHINING CENTER, with Vickers Acramatic 2100 CNC Control Panel, CAT 40 Taper Spindle, Pendant Control, 24" X 51" T-Slotted Table, 20-Position Automatic Tool Changer, S/N 9-90-98-1240 (bad drive)

FAIR FRIEND ENTERPRISE FV-800 CNC VERTICAL MACHINING CENTER, with BT-40 Taper Spindle, FANUC Series O-M CNC Control Panel, 18-Position Automatic Tool Changer, 18" x 36" Table, S/N VD022 (as is)



TREE VMC-1300/20 CNC VERTICAL MACHINING CENTER



HITACHI SEIKI HT-2032 HITECC-TURN 20 SII CNC LATHE

CNC & MANUAL LATHES:

HITACHI SEIKI HT-2032 HITECC-TURN 20 SII CNC LATHE, with Hitachi Seiki CNC Control Panel, 3J Collet Chuck, LNS Bar Feed, 10-Position Turret, S/N HTS20066

H.E.S. MACHINE TOOL 20" X 106" ENGINE LATHE, with Turnvision Digital Readout, 12" 3-Jaw Chuck, Tailstock, Steady Rest, 2" Index, S/N 05527

DONG YANG 18" X 60" ENGINE LATHE, with 10" 3-Jaw Chuck, Steady Rest, Tailstock, Newall Digital Readout, 2" Index, Inch / MM Threading, S/N 40026

PRESS BRAKES, ADDITIONAL FABRICATION MACHINES AND MORE!



AMADA RG50 55 TON X 82" CNC PRESS BRAKE



AMADA RG100S 110 TON X 102" CNC PRESS BRAKE



DIACRO 14-48-2 4' X 17" HYDRA-MECHANICAL PRESS BRAKE



AMADA M2060 78.74" X 1/4" SHEAR

PRESS BRAKES:

AMADA RG50 55 TON X 82" CNC PRESS BRAKE, NC9EX-II CNC Control, 59.9" Between Housings, 15.76" Throat, 3.94" Stroke, 14.58" Open Height, S/N 508091 [1991]

AMADA RG100S 110 TON X 102" CNC PRESS BRAKE, NC9EX CNC Control, 80.8" Between Housings, 15.76" Throat, 3.94" Stroke, 14.85" Open Height, S/N 103049

DIACRO 14-48-2 4' X 17" HYDRA-MECHANICAL PRESS BRAKE, with 3.25" Between Housings, 14-Gage x 4' Bending Capacity, 2" Stroke, Dual Speed, Front Operated Back Gauge, S/N 682-017462

ADDITIONAL FABRICATION MACHINES:

AMADA M-2060 POWERED SQUARING SHEAR, with 78.74" x 1/4" Capacity, 60 SPM, Front Supports, 79" Squaring Arm, Programmable Back Gauge, Foot Pedal, S/N: 20600562

W.F. WELLS W-10-1 HORIZONTAL BANDSAW, with Manual Clamping, 5HP Motor, 16" Opening, Elevated Head, S/N 247

LARGE QUANTITY OF PRESS BRAKE TOOLING



HYSTER E50B 5,000LB. FORKLIFT TRUCK



CLARKLIFT L500-YS80 6,900LB. FORKLIFT TRUCK



BRIDGEPORT 2HP KNEE TYPE VERTICAL MILLING MACHINE



MOORE NO. 1-1/2 JIG BORER



MILLER WELDER

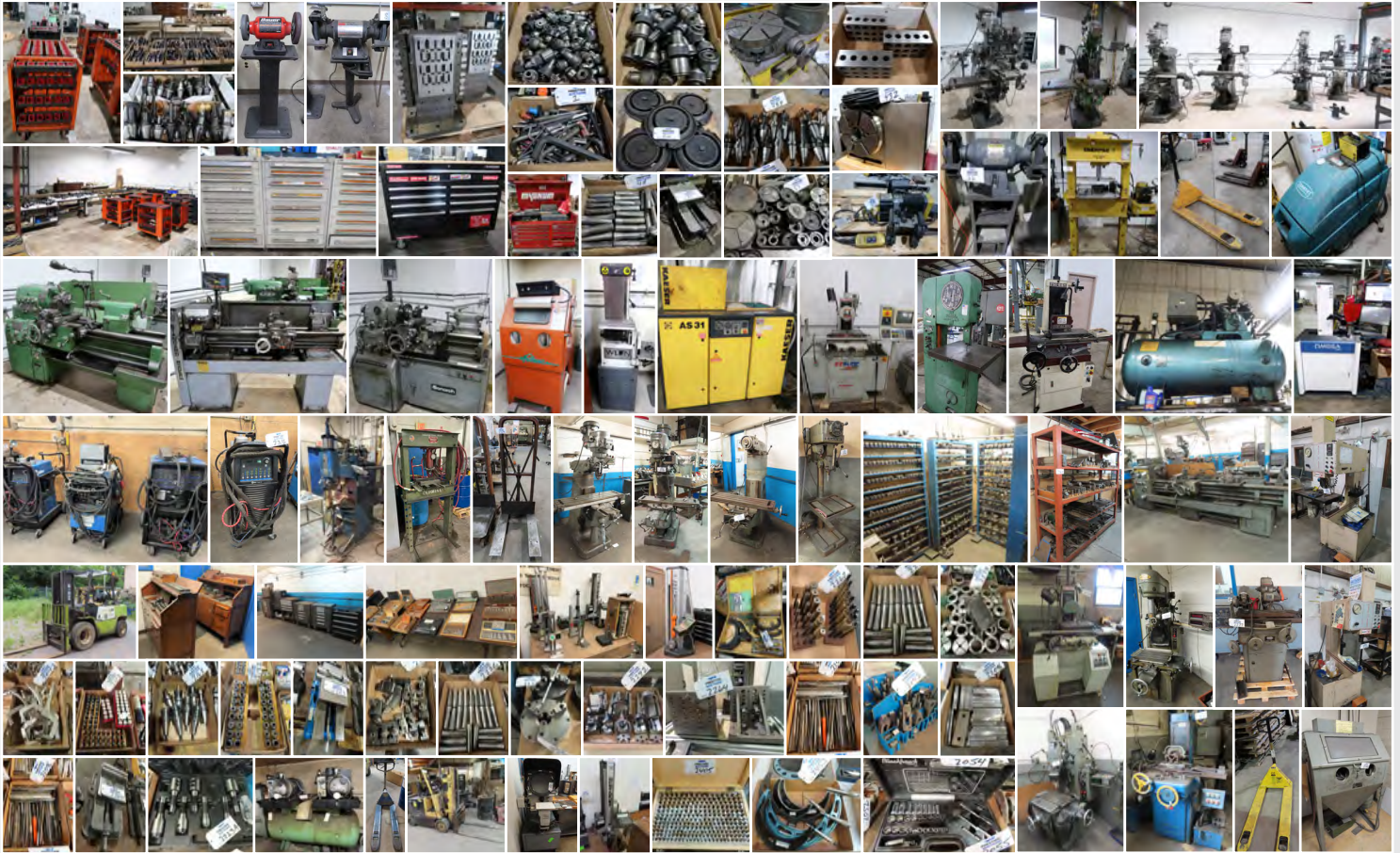


GALLMEYER & LIVINGSTON A 18" X 48" AUTO FEED SURFACE GRINDER



CINCINNATI 10" X 24" CYLINDRICAL GRINDER

ADDITIONAL EQUIPMENT, TOOLROOM, SHOP SUPPORT & MISCELLANEOUS



LARGE QUANTITY OF ADDITIONAL EQUIPMENT, TOOLROOM, SHOP SUPPORT & MISC.:

INCLUDING: CAT 40 & CAT 50 Tool Holders, Vidmar Cabinets, Tool Cabinets, Arbor Presses, Floor-Type Drills & Drill Presses, Chucks, Kurt Vises, Carbide & Perishable Tooling, Racking & Shelving, Worktables, Raw Material, Kaeser AS31 Air Compressor, Sullair ES6 Dual Head Air Compressor, Dynasurge APW-3 Automatic Pipe Welding System, Bridgeport Mills, Miller Welders, Surface Grinders, Pedestal Grinders, Sanders, Jig Borers, Dust Collectors, Keyseater, Hone, Tool Cabinets, Cantilever Racking, Tables, Benches, Pallet Jacks, Hand Tools & Much, Much More!

2-DAY ONLINE AUCTION



COMPLETE CLOSURE OF HIGH PRECISION PARTNERS

DAY 1: Late Model CNC Machining & Fabricating Facility

DATE: WEDNESDAY, SEPTEMBER 27 @ 11:00 AM ET

LOCATION: MACEDON, NEW YORK

INSPECTION: SEPTEMBER 26TH OR BY APPOINTMENT 9:00AM - 4:00PM ET

DAY 2: Former Chamtek Mfg. Fabricating & Machine Shop

DATE: THURSDAY, SEPTEMBER 28 @ 11:00 AM ET

LOCATION: ROCHESTER, NEW YORK

INSPECTION: SEPTEMBER 26TH OR BY APPOINTMENT 9:00AM - 4:00PM ET

PRESTIGE EQUIPMENT AUCTIONS
35 Pinelawn Road, Suite 203W,
Melville, NY 11747
Phone: 631-249-5566
auctions@prestigeequipment.com
www.prestigeequipment.com



IN CONJUNCTION
WITH:

