

# 3-DAY AUCTION EVENT



## COMPLETE WORLD CLASS TOOL & DIE MANUFACTURING FACILITY

**DAY 1 - LIVE WEBCAST**  
SEPTEMBER 19<sup>TH</sup> AT 10:00 AM ET

**DAY 2 & 3 - ONLINE AUCTION**  
SEPTEMBER 20<sup>TH</sup> - 21<sup>ST</sup> AT 10:00 AM ET

UNPRECEDENTED 3-DAY AUCTION EVENT! FEATURING (21) CNC VERTICAL & HORIZONTAL MACHINING CENTERS, (15) CNC HORIZONTAL BORING MILLS AS NEW AS 2016, FIDIA 5-AXIS CNC VERTICAL MACHINING CENTERS, (8) CNC GANTRY & BRIDGE MILLS, (6) MAKINO & INGERSOLL SINKER-TYPE EDMs, SPOTTING PRESSES, TARUS CNC GUN DRILLS & PROFILE MILLS, INJECTION MOLDING MACHINES UP TO 3000 TON CAPACITY, (25+) OVERHEAD BRIDGE CRANES UP TO 88 TON CAPACITY, INSPECTION, TOOLROOM, ROLLING STOCK, PLANT SUPPORT AND MORE!



2016 PAMA SPEEDMILL 3000 6-AXIS CNC TRAVELING COLUMN HORIZONTAL MILLING & BORING MACHINE



2014 FPT RONIN 6-AXIS CNC TRAVELING COLUMN HORIZONTAL MILLING & BORING MACHINE



2017 OPS INGERSOLL GANTRY EAGLE 1400 CNC SINKER TYPE EDM



2013 TOSHIBA BTD-130H.R22 TABLE TYPE CNC HORIZONTAL BORING MILL



2013 MAKINO MCC2013VG 6-AXIS HIGH SPEED CNC HORIZONTAL MACHINING CENTER



2016 FPT DINO X 350 IAT 5-AXIS CNC HIGH SPEED GANTRY MILL

**INSPECTION:** Monday, September 18<sup>TH</sup> from 8:00AM - 4:00PM ET

**ASSETS LOCATION:** Grand Rapids, Michigan

REGISTER NOW:

**BidSpotter**

**PRESTIGE EQUIPMENT AUCTIONS**  
35 Pinelawn Road, Suite 203W,  
Melville, NY 11747  
Phone: 631-249-5566  
auctions@prestigeequipment.com  
www.prestigeequipment.com



IN CONJUNCTION  
WITH:





# CNC TRAVELING COLUMN HORIZONTAL BORING MILLS & CNC HORIZONTAL BORING MILLS



**PAMA SPEEDMILL 3000 6-AXIS CNC TRAVELING COLUMN HORIZONTAL MILLING & BORING MACHINE**

## CNC TRAVELING COLUMN HORIZONTAL BORING MILLS:

**PAMA SPEEDMILL 3000 6-AXIS CNC TRAVELING COLUMN HORIZONTAL MILLING & BORING MACHINE**, Heidenhain 640 CNC Control, Travels: X- 393.70", Y- 118", Z- 59" (Ram), V- 118" (Rotary Table Infeed), 118" x 118" B-Axis Infeeding Rotary Table, 110,000 Lb. Table Weight Capacity, Ram Dimensions – 17.3" x 18.9", CAT 50 & HSK 63 Taper, 120-Station Automatic Tool Changer, 3-Station Automatic Attachment Changer, (3) Spindle Heads; Straight Head ME 70(6,000 RPM & 98 HP), 3+2 Universal Head TU50C HS (6,000 RPM & 67 HP), 2-Axis Continuous Head TW2 50 ES (20,000 RPM & 67 HP), Thru Spindle Coolant, Chip Conveyor, T-Slotted Floor Plates 118" x 196" S/N 30PG6191, (2016)

**FPT RONIN 6-AXIS CNC TRAVELING COLUMN HORIZONTAL MILLING & BORING MACHINE**, Heidenhain iTNC 530 CNC Control, Travels: X- 236.2", Y- 118.1", Z- 59" (Ram), 78.74" x 98.42" B-Axis Rotary Table, 66,000 Lb. Table Weight Capacity, CAT 50 Taper, 120-Position Automatic Tool Changer, 3-Station Automatic Attachment Changer, TUPCG 2-Axis .001° Indexing Head (5,000 RPM), SE 4-6 Straight Spindle Head (5,000 RPM), Thru Spindle Coolant, Chip Conveyor, 65 HP, S/N 6M0614118, A/N: FB23 (2016)



**FPT RONIN 6-AXIS CNC TRAVELING COLUMN HORIZONTAL MILLING & BORING MACHINE**



**TOSHIBA BTD-130H.R22 CNC TABLE TYPE HORIZONTAL BORING MILL**

## CNC HORIZONTAL BORING MILLS:

**TOSHIBA BP-150.R22 CNC TABLE TYPE HORIZONTAL BORING MILL**, Tosnuc 999 CNC Control, 5.9" Spindle Diameter, Travels: X- 160", Y- 120", Z- 60" (Saddle), W- 28" (Spindle), 71" x 87" B-Axis Rotary Table, 44,000 Lb. Table Capacity, 2,500 RPM, CAT 50 Taper, 90-Station Automatic Tool Changer, Tecnomagnete Magnetic Chucks, Thru Spindle Coolant, Probe, Full Chip Enclosure, (2) Chip Conveyors, S/N 130472, A/N: TB24 (2015)

**TOSHIBA BTD-130H.R22 CNC TABLE TYPE HORIZONTAL BORING MILL**, Tosnuc 999 CNC Control, 5.12" Spindle Diameter, Travels: X- 118.1", Y- 90.5", Z- 63" (Saddle), W- 27.5" (Spindle), 71" x 87" B-Axis Rotary Table, 44,000 Lb. Table Weight Capacity, 2,500 RPM, CAT 50 Taper, 60-Station Automatic Tool Changer, Electromatic Magnetic Chucks, Thru Spindle Coolant, Probe, Full Chip Enclosure, Operator Pendant Control, Chip Conveyor, 73 HP, S/N 145840, A/N: TB22 (2013)



**TOSHIBA BP-150.R22 CNC TABLE TYPE HORIZONTAL BORING MILL**



# CNC HORIZONTAL BORING MILLS



**KURAKI KBT-13EA CNC TABLE TYPE HORIZONTAL BORING MILL**



**KURAKI KBT-13A CNC TABLE TYPE HORIZONTAL BORING MILL**



**KURAKI KBT-13DX CNC TABLE TYPE HORIZONTAL BORING MILL**

## CNC HORIZONTAL BORING MILLS:

**(2) KURAKI KBT-13EA CNC TABLE TYPE HORIZONTAL BORING MILL**, Fanuc 16i-M CNC Control, 5.12" Spindle Diameter, Travels: X- 118.1", Y- 90.6", Z- 51.2" (Saddle), W- 25.6" (Spindle), 70.8" x 63" B-Axis Rotary Table, 33,000 Lb. Table Weight Capacity, 4,000 RPM, CAT 50 Taper, 60-Station Automatic Tool Changer, Thru Spindle Coolant, Chip Enclosure, Chip Conveyor, 60 HP, S/N 58103, A/N: KB18, S/N 58104, A/N: KB19

**KURAKI KBT-13A CNC TABLE TYPE HORIZONTAL BORING MILL**, Fanuc 16-M CNC Control, 5.12" Spindle Diameter, Travels: X- 118.1", Y- 80.7", Z- 51.2" (Saddle), W- 27.5" (Spindle), 63" x 70.8" B-Axis Rotary Table, 26,400 Lb. Table Capacity, 5 - 2,500 RPM, CAT 50 Taper, 60-Station Automatic Tool Changer, Thru Spindle Coolant, Full Chip Enclosure, S/N 56037, A/N: KB16

**KURAKI KBT-13DX CNC TABLE TYPE HORIZONTAL BORING MILL**, Fanuc 15-M CNC Control, 5.12" Spindle Diameter, Travels: X- 118.1", Y- 78.7", Z- 51.2" (Saddle), W- 27.5" (Spindle), 63" x 71" Indexing Rotary Table, 2,000 RPM, 50 Taper, Magnetic Table Fixture, Hennig Chip Conveyor, Thru Spindle Coolant, S/N 1529, A/N: KB4

**KURAKI KBT-11Z CNC TABLE TYPE HORIZONTAL BORING MILL**, Fanuc 16i-MB CNC Control, 4.33" Spindle Diameter, Travels: X- 96", Y- 70", Z- 47" (Saddle), W- 16" (Spindle), 55.1" x 68.9" B-Axis Rotary Table, 16,500 Lb. Table Weight Capacity, 2,000 RPM, CAT 50 Taper, 40-Station Automatic Tool Changer, Thru Spindle Coolant, Full Enclosure, Chip Conveyor, S/N 57504, A/N: KB20

**KURAKI KBT-11WA CNC TABLE TYPE HORIZONTAL BORING MILL**, Fanuc 16i-M CNC Control, 4.33" Spindle Diameter, Travels: X- 96", Y- 70", Z- 47" (Saddle), W- 16" (Spindle), 55.1" x 62.99" B-Axis Rotary Table, 14,300 Lb. Table Weight Capacity, 2,000 RPM, CAT 50 Taper, 40-Station Automatic Tool Changer, Thru Spindle Coolant, Full Enclosure, Chip Conveyor, S/N 4290, A/N: KB21

**(2) KURAKI KBT-13DXA CNC TABLE TYPE HORIZONTAL BORING MILL**, Fanuc 15-M CNC Control, 5.12" Spindle Diameter, Travels: X- 118.1", Y- 78.7", Z- 51.2" (Saddle), W- 27.5" (Spindle), 63" x 70.9" B-Axis Rotary Table, 22,000 Lb. Table Weight Capacity, 2,000 RPM (3-Range), CAT 50 Taper, 40-Station Automatic Tool Changer, Thru Spindle Coolant, Chip Conveyor, S/N 1556, A/N: KB3, S/N 1592, A/N: KB10



**KURAKI KBT-11Z CNC TABLE TYPE HORIZONTAL BORING MILL**



**KURAKI KBT-11WA CNC TABLE TYPE HORIZONTAL BORING MILL**



**KURAKI KBT-13DXA CNC TABLE TYPE HORIZONTAL BORING MILL**



**KURAKI KBT-13EA CNC TABLE TYPE HORIZONTAL BORING MILL**



**KURAKI KBT-13DXA TABLE TYPE CNC HORIZONTAL BORING MILL**



# CNC HORIZONTAL & VERTICAL MACHINING CENTERS

## CNC HORIZONTAL MACHINING CENTERS:

**MAKINO MCC2013VG 6-AXIS HIGH SPEED CNC HORIZONTAL MACHINING CENTER**, Makino Pro 5 CNC Control, Travels: X- 78.7", Y- 51.2", Z- 51.2", A-Axis Rotation: +/-30°, C-Axis Rotation: +/- 185°, 49.2" x 49.2" B-Axis Rotary Table, 14,000 Lb. Table Capacity, 20 - 12,000 RPM, HSK-100 Taper, 120-Station Automatic Tool Changer, Thru Spindle Coolant, Chiller Unit, Chip Conveyor, 40 HP, S/N 177, A/N: MC95 (2013)



**2013**  
**MAKINO MCC2013VG 6-AXIS HIGH SPEED CNC HORIZONTAL MACHINING CENTER**



**2018**  
**MAKINO D200Z 5-AXIS HIGH SPEED CNC VERTICAL MACHINING CENTER**



**2015**  
**MAKINO F5-5XR 5-AXIS CNC VERTICAL MACHINING CENTER**

## CNC VERTICAL MACHINING CENTERS:

**MAKINO D200Z 5-AXIS HIGH SPEED CNC VERTICAL MACHINING CENTER**, Makino Pro 6 CNC Control, Travels: X- 13.78", Y- 11.81", Z- 9.83", B-Axis Table Swing: 180 Degrees, C-Axis Table Rotation: 360 Degrees, 30,000 RPM, 11.81" Diameter Table, 165 Lb. Maximum Workpiece Weight, 40+2 Automatic Tool Changer, HSK-E50, Integral Erowa Chuck & Pallet, Probe, Core Cooled Ballscrews, Automatic Lubrication Supply Unit, Automatic Spindle Lubricant Temperature Controller, S/N 112, A/N: MC107 (2018)



**(3) OKK VP400 5-AXIS CNC VERTICAL MACHINING CENTERS**



**(2) OKK VP400 5-AXIS CNC VERTICAL MACHINING CENTERS WITH TRUNNION TABLE**

## CNC MACHINING CELLS:

**MAKINO F5-5XR 5-AXIS CNC VERTICAL MACHINING CENTER WITH TSUDAKOMA RN-161 TILTING CNC ROTARY TABLE**, Makino Pro 5 CNC Control, Travels: X- 35.4", Y- 19.7", Z- 17.7", 20,000 RPM, HSK-63A Taper, 30-Station Automatic Tool Changer, Erowa Robot Dynamic Loading Robot, Erowa 200-Station Rotary Magazine System, Spindle Temperature Control, S/N V150856 (2015)

**(3) OKK VP400 5-AXIS CNC VERTICAL MACHINING CENTERS WITH TRUNNION TABLE**, Fanuc 160iS-MB CNC Control & Fanuc 310iS-AD CNC Control, Travels: X- 23.62", Y- 16.14", Z- 18", 12,000 RPM, 40 Taper, 30-Station Automatic Tool Changer, Erowa ET1 Robotic Parts Load/Unloader, Thru Spindle Coolant, Torit Dust Collector, S/N's 354, 427, & 375, A/N: 200C83, 200C88, & OC84

**(2) OKK VP400 5-AXIS CNC VERTICAL MACHINING CENTERS WITH TRUNNION TABLE**, Fanuc 160iS-MB CNC Control, Travels: X- 23.62", Y- 16.14", Z- 18", 12,000 RPM, 40 Taper, 30-Station Automatic Tool Changer, System 3R WorkMaster 60-Station Robotic Parts Load/Unloader, Thru Spindle Coolant, S/N'S 281 & 289, A/N: OC78 & OC79

**(2) ROKU-ROKU-SANYO HC-658 4-AXIS HIGH SPEED CNC VERTICAL MACHINING CENTERS**, Fanuc 31i-A5 CNC Control, Travels: X- 23.6", Y- 19.68", Z- 15.74", 19.7" X 23.6 Table Dimensions, 440 Lb. Table Capacity, 200 - 32,000 RPM, #40 Taper, 30-Station Automatic Tool Changer, Erowa ET-2 300-Station Robotic Automatic Tool Changer System with Enclosure, (2) Tsudakoma RNA-160 4th-Axis Rotary Tables, 8.4 HP Motor S/N'S C232 & C223, A/N: RC-93 & RC94 (2011)



**2011**  
**(2) ROKU-ROKU-SANYO HC-658 4-AXIS HIGH SPEED CNC VERTICAL MACHINING CENTERS**



# CNC VERTICAL MACHINING CENTERS



**OKK VP600 5-AXIS CNC VERTICAL MACHINING CENTER**



**OKK VP400 5-AXIS CNC VERTICAL MACHINING CENTER**



**OKK PG-8 3-AXIS LOW PROFILE HIGH SPEED CNC VERTICAL MACHINING CENTER**



**OKK VM76R CNC VERTICAL MACHINING CENTER**



**OKK VM7III 4-AXIS CNC VERTICAL MACHINING CENTER**

## CNC VERTICAL MACHINING CENTERS:

**OKK VP600 5-AXIS CNC VERTICAL MACHINING CENTER WITH TRUNNION TABLE**, Fanuc 160is-MB CNC Control, Travels: X- 44", Y- 24", Z- 18", A-Axis Table Swivel: -105/+15, C-Axis Table Rotation: 360 Degrees, 16,000 RPM, 19.6" x 19.6" Table Dimensions, CAT 40 Taper, 30-Station Automatic Tool Changer, Thru Spindle Coolant, 30 HP, S/N 213, A/N: OC90

**OKK VP400 5-AXIS CNC VERTICAL MACHINING CENTER WITH TRUNNION TABLE**, Fanuc 310is-A5 CNC Control, 12,000 RPM, Travels: X- 23.62", Y- 16.14", Z- 18", 40 Taper, 30-Station Automatic Tool Changer, Thru Spindle Coolant, S/N 466, A/N: OC89

**OKK VM76R CNC VERTICAL MACHINING CENTER**, Fanuc 31i-B CNC Control, Travels: X- 60.63", Y- 29.92", Z- 25.98", 61" x 29.9" Table Dimensions, 3,300 Lb. Maximum Workpiece Weight, 12,000 RPM, CAT 50 Taper, 30-Station Automatic Tool Changer, Thru Spindle Coolant, Pre-Wired for 4th-Axis, S/N 387, A/N: OC57 (2016)

**OKK VM7III 4-AXIS CNC VERTICAL MACHINING CENTER**, Neomatic 635V CNC Control, Travels: X- 60", Y- 29", Z- 26", 61" x 29" Table Dimensions, 13,000 RPM, CAT 50 Taper, Automatic Tool Changer, 4th-Axis Wired, S/N 507, A/N: OC72

**OKK PG-8 3-AXIS LOW PROFILE HIGH SPEED CNC VERTICAL MACHINING CENTER**, Neomatic 635 CNC Control, Travels: X- 20", Y- 15", Z- 15", 16" X 22" Table Dimensions, 20,000 RPM, CAT 50 Taper, 20-Station Automatic Tool Changer, 30 HP S/N PG8-139, A/N: OC59

**OKK PG-8 3-AXIS LOW PROFILE HIGH SPEED CNC VERTICAL MACHINING CENTER**, Neomatic 635 CNC Control, Travels: X- 20", Y- 15", Z- 15", 16" X 22" Table Dimensions, 20,000 RPM, CAT 50 Taper, 20-Station Automatic Tool Changer, 30 HP S/N PG8-139, A/N: OC59



# FIDIA HIGH SPEED CNC VERTICAL MACHINING CENTERS



**FIDIA KR211 7-AXIS HIGH SPEED VERTICAL MACHINING CENTER**



**FIDIA K211 5-AXIS HIGH SPEED CNC VERTICAL MACHINING CENTER**



**FIDIA K197-5 5-AXIS HIGH SPEED CNC VERTICAL MACHINING CENTER**

## FIDIA HIGH SPEED CNC VERTICAL MACHINING CENTERS:

**FIDIA KR211 7-AXIS HIGH SPEED VERTICAL MACHINING CENTER**, Fidia C20 CNC Control w/ Upgraded Software, Travels: X- 112", Y- 49.3", Z- 39.4", Spindle Swivel/Rotation; C-Axis +/- 200°, A-Axis +95°/-110°, 49.21" x 78.75" Rotary Table Dimensions, 33,000 Lb Table Weight Capacity, 24,000 RPM, HSK 63 Taper, 40-Station Automatic Tool Changer, Thru-Spindle Coolant, Mist Collector, Chip Conveyor, Chiller, Oil Separator, 45 HP, S/N KR211-032, A/N: FC73

**FIDIA K211 5-AXIS HIGH SPEED CNC VERTICAL MACHINING CENTER**, Fidia C20 CNC Control w/ Upgraded Software, 24,000 RPM, Travels: X- 112", Y- 49.3", Z- 39.4", Spindle Swivel/Rotation; C-Axis: +/- 200°, A-Axis: +95°/-110°, 24,000 RPM, 49" x 112" Table Dimensions, HSK 63 Taper, 42 Station Automatic Tool Changer, Thru-Spindle Coolant, Chiller, Oil Separator, Knoll High Pressure Coolant System, Knoll Chip Conveyor, 45 HP, S/N K211-UEF466-049, A/N: FC81

**FIDIA K197-5 5-AXIS HIGH SPEED CNC VERTICAL MACHINING CENTER**, Fidia C20 CNC Control w/ Upgraded Software, Travels: X- 71", Y- 35.5", Z- 33.5", C-Axis: +/-200°, A-Axis Travel: +95°/-110°, 24,000 RPM, 49.21" x 78.75" Table Dimensions, HSK 63 Taper, 20-Station Automatic Tool Changer, Thru-Spindle Coolant, Chip Conveyor, Mist Collector, Chiller, Oil Separator, 45 HP, S/N K197-016, A/N: FC69

**FIDIA K199/5 5-AXIS HIGH SPEED CNC VERTICAL MACHINING CENTER**, Fidia C20 CNC Control w/ Upgraded Software, Travels: X- 71", Y- 35.5", Z- 33.5", Spindle Swivel/Rotation; C-Axis: +/- 200°, A-Axis: +95°/-110°, 24,000 RPM, 71" x 82" Table Dimensions, HSK 63 Taper, 20-Station Automatic Tool Changer, Thru-Spindle Coolant, Chip Conveyor, Mist Collector, Chiller, 45 HP, S/N K199-029, A/N: FC80

**FIDIA K199/5 5-AXIS HIGH SPEED CNC VERTICAL MACHINING CENTER**, Fidia C20 CNC Control w/ Upgraded Software, Travels: X- 71", Y- 35.5", Z- 33.5", Spindle Swivel/Rotation; C-Axis: +/- 200°, A-Axis: +95°/-110°, 24,000 RPM, 71" x 82" Table Dimensions, HSK 63 Taper, 20-Station Automatic Tool Changer, Thru-Spindle Coolant, Chip Conveyor, Mist Collector, Chiller, 45 HP, S/N K199-029, A/N: FC80

**FIDIA K199/5 5-AXIS HIGH SPEED CNC VERTICAL MACHINING CENTER**, Fidia C20 CNC Control w/ Upgraded Software, Travels: X- 71", Y- 35.5", Z- 33.5", Spindle Swivel/Rotation; C-Axis: +/- 200°, A-Axis: +95°/-110°, 24,000 RPM, 71" x 82" Table Dimensions, HSK 63 Taper, 20-Station Automatic Tool Changer, Thru-Spindle Coolant, Chip Conveyor, Mist Collector, Chiller, 45 HP, S/N K199-021, A/N: FC74

**FIDIA K199/5 5-AXIS HIGH SPEED CNC VERTICAL MACHINING CENTER**, Fidia C20 CNC Control w/ Upgraded Software, Travels: X- 71", Y- 35.5", Z- 33.5", Spindle Swivel/Rotation; C-Axis: +/- 200°, A-Axis: +95°/-110°, 24,000 RPM, 71" x 82" Table Dimensions, HSK 63 Taper, 20-Station Automatic Tool Changer, Thru-Spindle Coolant, Chip Conveyor, Mist Collector, Chiller, 45 HP, S/N K199-019, A/N: FC77



**FIDIA K199/5 5-AXIS HIGH SPEED CNC VERTICAL MACHINING CENTER**



**FIDIA K199/5 5-AXIS HIGH SPEED CNC VERTICAL MACHINING CENTER**



**FIDIA K199/5 5-AXIS HIGH SPEED CNC VERTICAL MACHINING CENTER**



# CNC GANTRY AND BRIDGE MILLS



**FPT DINO X 5-AXIS CNC HIGH SPEED GANTRY MILL**



**FPT DINO X 350 IAT 5-AXIS CNC HIGH SPEED GANTRY MILL**



**JOBS LINX COMPACT 5-AXIS CNC HIGH SPEED GANTRY MILL**

## CNC GANTRY & BRIDGE MILLS:

**FPT DINO X 5-AXIS CNC HIGH SPEED GANTRY MILL**, Heidenhain DNC 640 CNC Control, Travels: X- 98.42", Y- 86.61", Z- 43.30", 18,000 RPM, 79" x 99" Table Dimensions, Automatic Universal Head, HSK 63 Taper, 60-Station Automatic Tool Changer, Thru-Spindle Coolant, Chiller, Chip Conveyor, New Spindle 2023, S/N DM0214058, A/N: FC100 (2014)

**FPT DINO X 350 IAT 5-AXIS CNC HIGH SPEED GANTRY MILL**, Heidenhain TNC 640 CNC Control, Travels: X- 98.42", Y- 136.7", Z- 51", 14,000 RPM, 98.4" x 136.75" Table Dimensions, Automatic Universal Head, HSK 100 Taper, 60-Station Automatic Tool Changer, Thru-Spindle Coolant, Chiller, Chip Conveyor, Paper Filtration System, New Spindle 2023, S/N 1210, A/N: FC102 (2016)

**JOBS LINX COMPACT 5-AXIS CNC HIGH SPEED GANTRY MILL**, Fidia C20 CNC Control w/ Upgraded Software, Travels: X- 165", Y- 126", Z- 49", 118" x 197" Table Dimensions, Automatic Universal Head, (2) Spindle Head Attachments; HSK 63 Taper (24,000 RPM, 53 HP), HSK 100 Taper (10,000 RPM, 45 HP), 32-Station Automatic Tool Changer, Thru-Spindle Coolant, Chip Conveyor, Spindle Chiller (New 2019), Spindle Head Refurbished (2019), S/N 136002710690730, A/N: JC68

**YCM DCV 4025B CNC GANTRY MILL**, YCM Fanuc MXP-200FB CNC Control, Travels: X- 157", Y- 98", Z- 40", 4,500 RPM, 94" x 161.5" Table Dimensions, CAT 50 Taper, 120-Station Automatic Tool Changer, Thru-Spindle Coolant, CoolJet High Pressure Coolant System, Chip Conveyor, Spindle Chiller, S/N 10011, A/N: YC96 (2012)

**DROOP & REIN TF2500-SRC-30/15NW 5-AXIS CNC DOUBLE COLUMN BRIDGE MILL**, Heidenhain iTNC 530 CNC Control (Upgraded 2022), Travels: X- 216", Y- 130", Z- 60", 98.4" x 196.8" Table Dimensions, 55,000 lb. Table Weight Capacity, 118" Distance Between Columns, 85.8" Under Rail Height, CAT 50 Taper, (2) Spindle Head Attachments; Automatic Universal Head (4000 RPM), Straight Head (6000 RPM), 30-Station Automatic Tool Changer, Operator Control Console, 40 HP, S/N 01088, A/N: DC19

**DROOP & REIN FOGS 3245 H 5-AXIS CNC HIGH SPEED GANTRY MILL**, MTI 3D Geometry CNC Control (Upgraded 2012), Travels: X- 177", Y- 98.43, Z- 47.25", 98.5" x 157.5" Table Dimensions, 44,000lb Table Weight Capacity, (2) Spindle Head Attachments, HSK 100 (10,000 RPM), HSK 63 (16,000 RPM), 2-Station Automatic Attachment Changer, 30-Station Automatic Tool Changer, Hydraulic Unit, Oil Circulation Unit, Full Chip Enclosure, S/N 1600, A/N: DC56

**DROOP & REIN FOG 2540 H 5-AXIS CNC HIGH SPEED GANTRY MILL**, MTI 3D Geometry CNC Control (Upgraded 2012), Travels: X- 177", Y- 98.43, Z- 47.25", 98.5" x 157.5" Table Dimensions, 44,000lb. Table Weight Capacity, (2) Spindle Head Attachments; HSK 100 (10,000 RPM), HSK 63 (16,000 RPM), 2-Station Automatic Attachment Changer, 30-Station Automatic Tool Changer (10 – HSK 100/20 HSK-63), Hydraulic Unit, Oil Circulation Unit, Full Chip Enclosure, S/N 01340, A/N: DC36

**DROOP & REIN FOG 2500 HS11/13NW 5-AXIS CNC HIGH SPEED GANTRY MILL**, MTI 3D Geometry CNC Control (Upgraded 2012), Travels: X- 177", Y- 98.43", Z- 47.25", 98.5" x 167" Table Dimensions, (2) Spindle Head Attachments; HSK 100 (10,000 RPM), HSK 63 (16,000 RPM), 4-Station Automatic Attachment Changer, 30-Station Automatic Tool Changer (15 – HSK-100/15 – HSK-63), Hydraulic Unit, Oil Circulation Unit, Full Chip Enclosure, S/N 01031, A/N: DC18



**YCM DCV 4025B CNC GANTRY MILL**



**DROOP & REIN TF2500-SRC-30/15NW 5-AXIS CNC DOUBLE COLUMN BRIDGE MILL**



**DROOP & REIN FOG 2500 HS11/13NW 5-AXIS CNC HIGH SPEED GANTRY MILL**



# CNC ELECTRIC DISCHARGE MACHINES



**2017**  
**OPS INGERSOLL GANTRY EAGLE 1400**  
**CNC SINKER TYPE EDM**



**2012**  
**MAKINO EDNC-207S CNC SINKER**  
**TYPE EDM**



**2012**  
**MAKINO EDNC 157S CNC SINKER**  
**TYPE EDM**

## CNC ELECTRIC DISCHARGE MACHINES:

**OPS INGERSOLL GANTRY EAGLE 1400 CNC SINKER TYPE EDM**, OPS Ingersoll CNC Control, Travels: X- 101.9", Y- 60.6", Z- 31.1", 126" x 79.52" x 53.1" Maximum Work Piece Dimensions, C-Axis, 47-Station Automatic Tool Changer, Koolant Coolers Package Chiller System, Erowa Tooling, Handheld Operator Pendant, Operator's Platform, S/N 577059, (2017)

**MAKINO EDNC-207S CNC SINKER TYPE EDM**, Makino MGW-S6 CNC Control, Travels: X- 78.74", Y- 27.6", Z- 31.5", 51" x 98.5" Table Dimensions, 22,000 Lb. Max. Workpiece Weight, C-Axis, 32-Station Automatic Tool Changer, Fire Suppression System, S/N 52, A/N: ME20 (2012)

**MAKINO EDNC 157S CNC SINKER TYPE EDM**, Makino MGH6 CNC Control, Travels: X- 98.4", Y- 55.1", Z- 31.5", C-Axis, 32-Station Automatic Tool Changer, S/N 107, A/N: ME19 (2012)

**INGERSOLL GANTRY 2000 4-AXIS CNC SINKER TYPE EDM**, Travels: X- 108", Y- 61", Z- 39", Ball Screw Drives, Updated CNC Control with Operator Pendant, S/N 582006, A/N: IE17 (2002)

**MAKINO EDNC 106S CNC SINKER TYPE EDM**, Makino MGH6 CNC Control, Travels: X- 39", Y- 23", Z- 17", C-Axis, 30-Station Automatic Tool Changer, Handheld Operator Control Pendant, S/N 493, A/N: ME18 (2012)

**MAKINO EDNC 65S CNC SINKER TYPE EDM**, Makino MGH6 CNC Control, Travels: X- 25", Y- 17", Z- 13", C-Axis, 16-Station Automatic Tool Changer, Erowa Tooling, S/N E21157, A/N: ME21 (2012)



**2002**  
**INGERSOLL GANTRY 2000 4-AXIS CNC**  
**SINKER TYPE EDM**



**2012**  
**MAKINO EDNC 106S CNC SINKER**  
**TYPE EDM**



**2012**  
**MAKINO EDNC 65S CNC SINKER**  
**TYPE EDM**



# HYDRAULIC PRESSES AND LARGE CAPACITY HORIZONTAL BAND SAWS



**MILLUTENSIL BLUE LINE MIL 263 4-POST HYDRAULIC DIE & MOLD SPOTTING PRESS**



**REIS TUS 180 OK-200 DOWN ACTING 4-POST HYDRAULIC SPOTTING PRESS**

## HYDRAULIC PRESSES:

**MILLUTENSIL BLUE LINE MIL 263 4-POST HYDRAULIC DIE & MOLD SPOTTING PRESS**, Siemens Simatic HMI Control, 200 Ton Capacity, 98.4" x 78.7" Sliding Bolster, 107.4" Between Columns (Longitudinal), 83.8" Between Columns (Horizontal), 100°/150°/180° Upper Plate Rotation, 44,000-Lb. Maximum Workpiece Weight (Upper Plate), 99,000-Lb. Maximum Workpiece Weight (Lower Plate), 78.74" Daylight, 29.5 HP, S/N MIL263.010, A/N: MP17 (2015) **SOLD!**

**REIS TUS 180 OK-200 DOWN ACTING 4-POST HYDRAULIC SPOTTING PRESS**, 180 Ton Capacity, 76.75" x 86.5" T-Slotted Sliding Bolster, 104" Daylight, S/N 583526, A/N: RP3

**REIS TUS-160 DOWN ACTING 4-POST HYDRAULIC SPOTTING PRESS**, 100 Ton Capacity, 61" x 71" T-Slotted Sliding Bolster, S/N 10177, A/N: RP1

**REIS TUS-160-100 DOWN ACTING 4-POST HYDRAULIC SPOTTING PRESS**, 100 Ton Capacity, 61" x 86.5" T-Slotted Sliding Bolster, 63.7" Between Columns, 90" Daylight, S/N 0318900, A/N: RP14

**BLISS HS-2000 4R-162-120 4-POST HYDRAULIC TRY OUT PRESS**, 2000 Ton, 120" x 162" T-Slotted Sliding Bolster, 120" Daylight, 52" Shut Height, S/N 142-01, A/N: BP5



**REIS TUS-160 DOWN ACTING 4-POST HYDRAULIC SPOTTING PRESS**



**REIS TUS-160-100 DOWN ACTING 4-POST HYDRAULIC SPOTTING PRESS**



**FABBRICA ITALIANA SEGATRICI MODEL 2000.P LARGE CAPACITY GANTRY TYPE HORIZONTAL BAND SAW**



**BLISS HS-2000 4R-162-120 4-POST HYDRAULIC TRY OUT PRESS**



**FABBRICA ITALIANA SEGATRICI MODEL 1250P HORIZONTAL BAND SAW**

## LARGE CAPACITY HORIZONTAL BAND SAWS:

**FABBRICA ITALIANA SEGATRICI MODEL 2000.P LARGE CAPACITY GANTRY TYPE HORIZONTAL BAND SAW**, Allen Bradley Panel View 600 Control System, 79" x 72" Cutting Capacity, 79" x 288" Table Dimensions, Travels: X- 196", Y- 72", 3" Blade Width, Tilt Blade Adjustment, Hydraulic Clamping, Operator Control Pendant, S/N 56/99, A/N: FS41

**FABBRICA ITALIANA SEGATRICI MODEL 1250P HORIZONTAL BAND SAW**, 105" x 169" Table Dimensions, Travels: X- 98.42", Y- 39.37", 62" Under Blade, Operator Pendant Control, S/N 64, A/N: FS43



# CNC GUN DRILLS AND CNC PROFILE MILLS



TARUS GDTC510 - 6XRT CNC GUN DRILLING MACHINE



TARUS TPTCGD512S CNC GUN DRILLING MACHINE



TARUS TPTCDG5086 CNC GUN DRILLING MACHINE



TARUS HS8412 CNC PROFILE MILLING MACHINE

## CNC GUN DRILLS:

**TARUS GDTC510 - 6XRT CNC GUN DRILLING MACHINE**, Hope International Systems CNC Control, 2" Maximum Drilling Diameter, 92" Stroke, Travels: X- 130", Y- 59", Z- 44", 62" x 96" Table Dimensions, 48" Diameter Built In Magnetic Rotary Table, 15° x 15° Head Tilt, 4,000 RPM Auxiliary Spindle, Coolant System, Magnetic Chip Conveyor, S/N GDCART2671006418, A/N: TG11 (2011)

**TARUS TPTCGD512S CNC GUN DRILLING MACHINE**, Lemoine CNC Control (Updated 2019), 2" Maximum Drilling Diameter, 8,000 RPM, 84" Stroke, Travels: X- 144", Y- 56", Z- 22", 60" x 144" Table Dimensions, 3,000 RPM Auxiliary Spindle, Coolant, Mayfram Magnetic Chip Conveyor, S/N TPTCGDCNC1230307, A/N: TG4

**TARUS TPTCGD512S CNC GUN DRILLING MACHINE**, Lemoine CNC Control (Updated 2019), 2" Maximum Drilling Diameter, 8,000 RPM, 84" Stroke, Travels: X- 144", Y- 56", Z- 22", 60" x 144" Table Dimensions, 3,000 RPM Auxiliary Spindle, Coolant, Mayfram Magnetic Chip Conveyor, S/N TPTCGDCNC1320303, A/N: TG3

**TARUS TPTCGD512S CNC GUN DRILLING MACHINE**, Tarus MBX-92 CNC Control, 2" Maximum Drilling Diameter, 8,000 RPM, 84" Stroke, Travels: X- 144", Y- 56", Z- 22", 60" x 144" Table Dimensions, 3,000 RPM Auxiliary Spindle, Coolant, Mayfram Magnetic Chip Conveyor, S/N TPTCGDCNC1377031, A/N: TG7

**TARUS TPTCDG5086 CNC GUN DRILLING MACHINE**, Tarus MBX-92 CNC Control, 2" Maximum Drilling Diameter, 8,000 RPM, 84" Stroke, Travels: X- 96", Y- 56", Z- 22", 60" x 96" Table Dimensions, 3,000 RPM Auxiliary Spindle, Coolant, Mayfram Magnetic Chip Conveyor, S/N TPTCGDCNC1719042360, A/N: TG9

## CNC PROFILE MILLS:

**TARUS HS8412 CNC PROFILE MILLING MACHINE**, Lemoine CNC Control (Upgraded 2016), Travels: X- 120", Y- 85", Z- 42", A-Axis Head Rotation: 0° - 45°, C-Axis Head Rotation: 0° - 360°, 8,000 RPM, 72" x 120" Table Dimensions, 50,000 Lb. Table Weight Capacity, 96" Between Columns, 44" Under Rail, CAT 50 Taper, 10.5 HP, S/N HSDC1555027, A/N: TC34

**TARUS HS8412 CNC PROFILE MILLING MACHINE**, Lemoine CNC Control (Upgraded 2016), Travels: X- 120", Y- 85", Z- 42", A-Axis Head Rotation: - 0° - 45°, C-Axis Head Rotation: 0° - 360°, 8,000 RPM, 72" x 120" Table Dimensions, 50,000 Lb. Table Weight Capacity, 96" Between Columns, 44" Under Rail, CAT 50 Taper, 10.5 HP, S/N HSDC1555028, A/N: TC35



# COORDINATE MEASURING MACHINES AND INJECTION MOLDING PLANT

1 OF 2



**MITUTOYO CHN1612-30 3-AXIS CNC COORDINATE MEASURING MACHINE**

## COORDINATE MEASURING MACHINES:

**MITUTOYO CHN1612-30 3-AXIS CNC COORDINATE MEASURING MACHINE,** Mitutoyo CMMC-35 with Renishaw PHC Probe Head interface, Travels: X- 120", Y- 60", Z- 48", 60" x 120" x 12" Granite Surface Plate, Renishaw PH10M Probe, Joy-Stick Operator Pendant, Controller Air Dryer, S/N 0016401

**MITUTOYO CHN1612 3-AXIS CNC COORDINATE MEASURING MACHINE,** Renishaw PHC 10 – 2 Probe Head Controller with Renishaw PI 200 Probe Interface, Travels: X- 120", Y- 60", Z- 48", 60" x 120" x 12" Granite Surface Plate, Renishaw PH10M Probe, Joy-Stick Operator Pendant, Controller Air Dryer, S/N 82-251689-93-933080012



**CINCINNATI MILACRON MODEL VT-165-13, 185-TON X 13 OZ. CNC INJECTION MOLDING MACHINE**



**CINCINNATI MILACRON MODEL MH-725-95, 725-TON X 95 OZ. CNC HYDRAULIC INJECTION MOLDING MACHINE**



**FERROMATIK-MILACRON "MAGNA 250" MODEL MH25021, 250-TON X 21 OZ. SHOT CAPACITY HYDRAULIC CLAMP HORIZONTAL RECIPROCATING SCREW PLASTIC INJECTION MOLDING MACHINE**

## INJECTION MOLDING PLANT:

**CINCINNATI MILACRON MODEL VL300-540, 3,000-TON X 540 OZ. CNC HYDRAULIC INJECTION MOLDING MACHINE,** S/N H26A0193003 (1991)- Cylinder Repair (2020)- Cincinnati Milacron Model Camac VEL CNC Control, Synventive Control System, Great Lakes Valve Gate Control, Conair Trueblend Hopper Mixer Blender Loader System, Pets Model 727A3-76 36-Zone Computerized Hot Runner, Mold Temperature Control Unit, S/N K738. Quad Press Magnetic Quick Release Mold Clamp System, Cincinnati Dryer Unit, Sepro Robotic Part Picker

**CINCINNATI MODEL VL-3000-413, 3,000-TON X 413 OZ. CNC HYDRAULIC INJECTION MOLDING MACHINE,** Hydraulic Action Clamp, Magnetic Mold Platten Attachment, 32" Screw Stroke, Spero Robotic Parts Extractor System, Cincinnati Milacron Model Camac 486 CNC Control, Conair Machine Mounted Hopper, Vacuum Loader, Blender/Dryer System, Gammaflux Model TTC-2100 Mold Temp. Control, S/N H26A0195002 (1995)

**VAN DORN MODEL 2000-HP-260, 2,000-TON X 260 OZ. CNC HYDRAULIC INJECTION MOLDING MACHINE,** Van Dorn Pathfinder CNC Control, Autoload Vacuum Loader / Blender, Tecnomagnete Model CU/QP-216 Magnetic Quick Change Moldclamp System, S/N 00141 (2003) MPI-ML1 Auto Blend System, Conair Franklin Model CS – 401 Dryer System, S/N DBD-1295- Pets Model VGAT1500 Control, S/N V308 [NOT IN SERVICE]

**CINCINNATI MILACRON MODEL MM1500-232, 1500-TON X 232 OZ. CNC HYDRAULIC INJECTION MOLDING MACHINE,** S/N H34A0100016 (2000)- Cylinder Repaired (2019), 22" Screw Stroke, Milacron Updated CNC Control (2021), Quad Press Magnetic Quick Mold Clamping System, Synventive Hydraulic Valve Gate Controller- Sepro Model 7x55 Robotic Part Picker

**CINCINNATI MILACRON MODEL MM1100-179, 1100-TON X 179 OZ. CNC HYDRAULIC INJECTION MOLDING MACHINE,** S/N H32A0100014 (1999), Cincinnati Milacron Model Camac 486C CNC Control, 22" Screw Stroke, Pets 24-Zone Mold Controller, Plastrac Autoload Vacuum Loader / Blender System, Quad Press Magnetic Quick Mold Clamp System, Sepro Model 7 X 45ii Robotic Picker System (2019)

**CINCINNATI MILACRON MODEL MH-725-95, 725-TON X 95 OZ. CNC HYDRAULIC INJECTION MOLDING MACHINE**

**VAN DORN MODEL 500-HT-60F, 500-TON X 60 OZ. CAPACITY TOGGLE CLAMP HORIZONTAL ROTARY SCREW PLASTIC INJECTION MOLDING MACHINE,** S/N 219A (1993)- Van Dorn Pathfinder Programmable Control, 15" Screw Stroke- 41" Clamp Stroke, Pets Hot Runner Control, Autoload Vacuum Loader, Quad Press Magnetic Quick Release Mold Clamp System, Hydraulics, Transformer

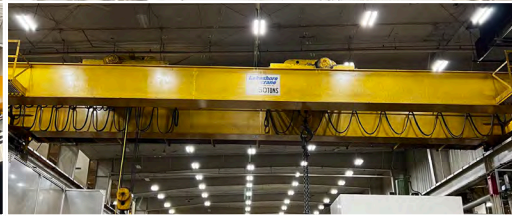
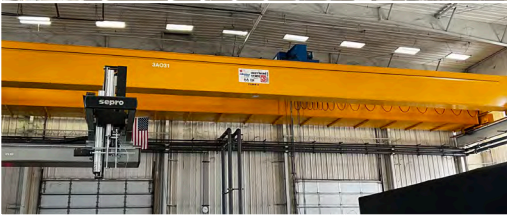
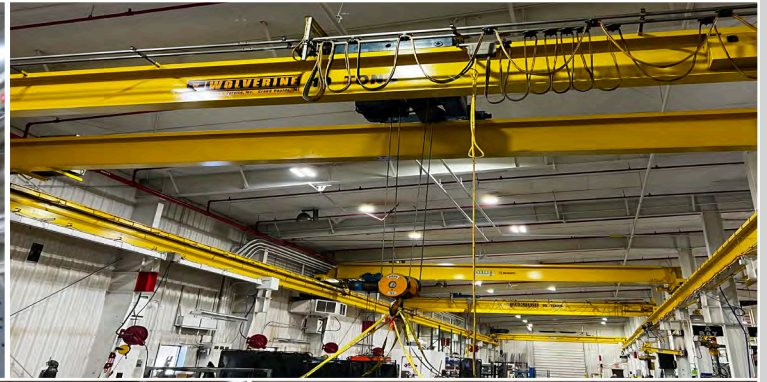
**FERROMATIK-MILACRON "MAGNA 250" MODEL MH25021, 250-TON X 21 OZ. SHOT CAPACITY HYDRAULIC CLAMP HORIZONTAL RECIPROCATING SCREW PLASTIC INJECTION MOLDING MACHINE,** S/N H02A0400054 (2002)- Cincinnati-Milacron Model Camac 486C, Computerized Control, Autoload Vacuum Loader, Novatec Dryer System, Transformer, Hydraulics- Pets Model 727P-12, 12-Zone Portable Mold Controller

**CINCINNATI MILACRON MODEL VT-165-13, 185-TON X 13 OZ. CNC INJECTION MOLDING MACHINE**

**CINCINNATI-MILACRON MODEL VT-110-F, 110-TON X 7 OZ. SHOT CAPACITY TOGGLE CLAMP HORIZONTAL RECIPROCATING SCREW PLASTIC INJECTION MOLDING MACHINE,** S/N T35A0397021 (1997)- Cincinnati-Milacron Model Camac VSX, Computerized Control, 7-1/2" Screw Stroke, 20" Clamp Stroke, Autoload Vacuum Loader



# OVERHEAD CRANES AND ROLLING STOCK



VIEW OF OVERHEAD CRANES



HYSTER #155 XL2 FORKLIFT



HYSTER #155 XL2 FORKLIFT



NISSAN #MUIF2A25LV FORKLIFT



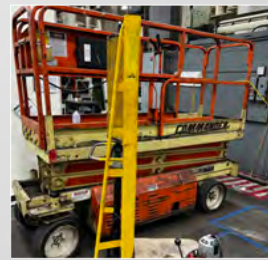
VIEW OF MILLER WELDERS



PETERBILT MODEL 567 TRACTOR



GENIE #Z45-25J ELECTRIC MAN LIFT



COMMANDER #CM2033 PLATFORM LIFT



TENNANT #S30 RIDING FLOOR SWEEPER



KENWORTH T2000 SEMI TRUCK



KENWORTH CONSTRUCT T800 SEMI TRUCK



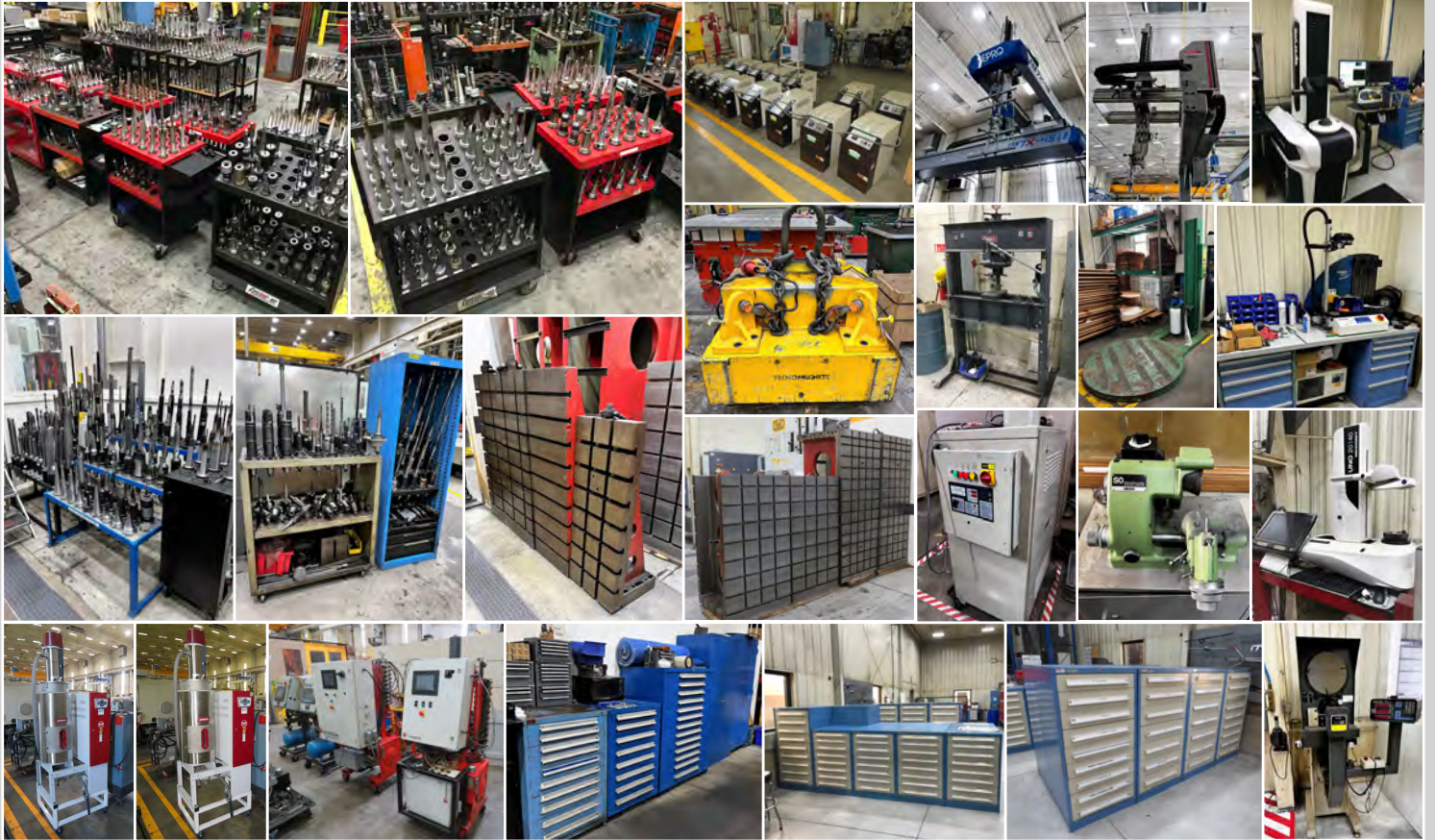
FORD TRANSIT CONNECT STATION WAGON



TRAIL KING SEMI TRAILER 20A



# MISCELLANEOUS & SUPPORT EQUIPMENT



Over (50) Lyon Tool Storage Cabinets with Huge Qty Carbide Inserts, Drills, Electronics, Bearings, Fasteners, MRO & Shop Supplies Qty – Flammables Storage Cabinets; Steel Workbenches; Heavy Duty Steel Saw Horses; Bar Storage Racks Racking; Air Compressors; Saws; Welding; Pedestal Grinders; State #D24 Pedestal Type Sander; Drill Presses; Lifting Magnets to 44,000 Lb Capacity; Parker #80-DEC43 Parkrimp Crimping System; Dake #75H Hydraulic Shop Press; Pallet Kurt Precision Vises; Pneumatic, Cordless & Electric Hand Tools; Gear Pullers; and Much More!

## 3-DAY AUCTION EVENT



# COMPLETE WORLD CLASS TOOL & DIE MANUFACTURING FACILITY

**DAY 1 - LIVE WEBCAST**  
SEPTEMBER 19<sup>TH</sup> AT 10:00 AM ET

**DAY 2 & 3 - ONLINE AUCTION**  
SEPTEMBER 20<sup>TH</sup> - 21<sup>ST</sup> AT 10:00 AM ET

**INSPECTION:** Monday, September 18<sup>th</sup> from 8:00 AM - 4:00 PM ET  
**ASSETS LOCATION:** Grand Rapids, Michigan

REGISTER NOW:

**BidSpotter**

**PRESTIGE EQUIPMENT AUCTIONS**  
35 Pinelawn Road, Suite 203W,  
Melville, NY 11747  
Phone: 631-249-5566  
auctions@prestigeequipment.com  
www.prestigeequipment.com



IN CONJUNCTION  
WITH:

