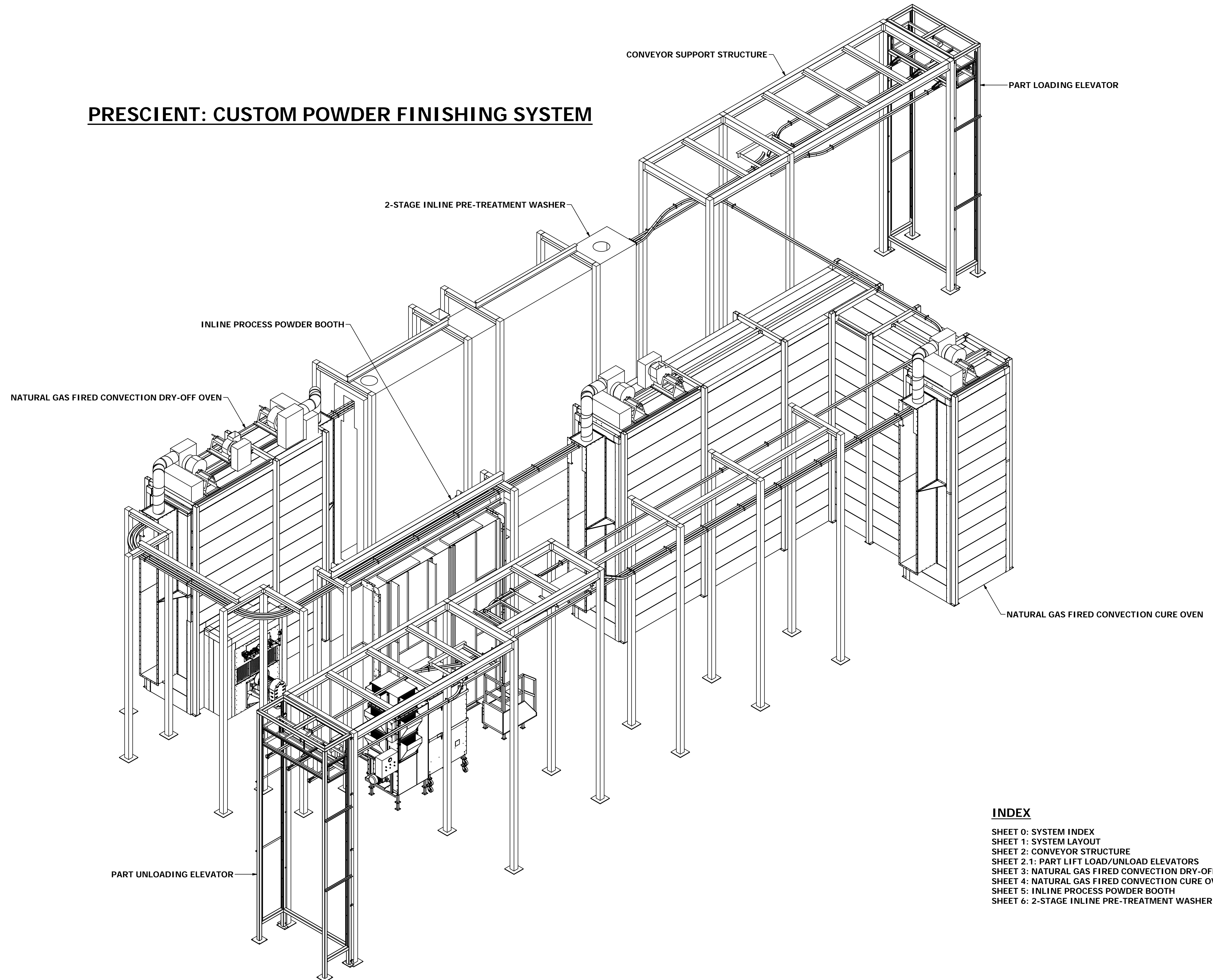


PRESCIENT: CUSTOM POWDER FINISHING SYSTEM



ROHNER MECHANICAL, INC.
 2650 W. ANDERSON RD.
 SUITE 102
 WACO, WA 98661
 (360) 885-7411 VOICE
 WA LIC # R000000518
 OR LIC # 135549
 CA# 792654
 WWW.ROHNER-USA.COM



A CUSTOM POWDER FINISHING SYSTEM FOR:
PRESCIENT
 3500 INDUSTRIAL DRIVE
 DURHAM, NC 27704

DRAWN BY: RDC
 CHECKED BY: DGR

© 2007-2014 ROHNER ALL RIGHTS RESERVED
 THIS DOCUMENT AND THE IDEAS EXPRESSED HEREIN ARE THE EXCLUSIVE PROPERTY OF ROHNER AND IS NOT TO BE REPRODUCED IN ANY MANNER WITHOUT THE EXPRESS WRITTEN AUTHORIZATION OF ROHNER.

ISSUED DATE: 10-7-2016
 REV: 16.0 / 10-7-2016
 DESCRIPTION OF CHANGE(S):
 APPROVAL DRAWING
 INITIAL RELEASE

DRAWING TITLE:
 SYSTEM INDEX
 ISOMETRIC
 DRAWING

JOB NO:
 R2016151
 EQUIP. NO:
 SYSTEM INDEX

SHEET NO:

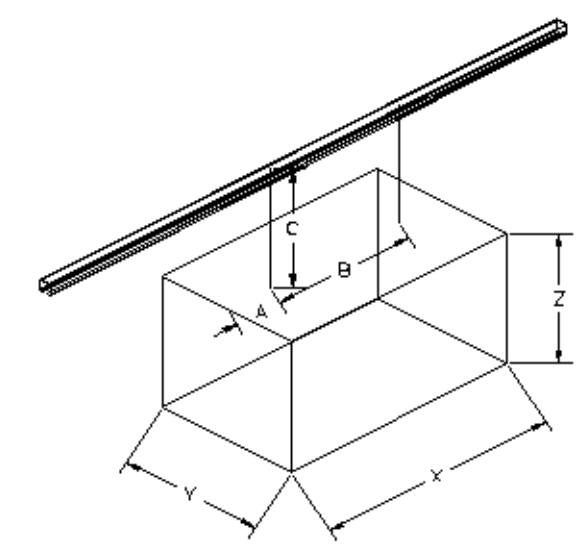
INDEX

- SHEET 0: SYSTEM INDEX
- SHEET 1: SYSTEM LAYOUT
- SHEET 2: CONVEYOR STRUCTURE
- SHEET 2.1: PART LIFT LOAD/UNLOAD ELEVATORS
- SHEET 3: NATURAL GAS FIRED CONVECTION DRY-OFF OVEN
- SHEET 4: NATURAL GAS FIRED CONVECTION CURE OVEN
- SHEET 5: INLINE PROCESS POWDER BOOTH
- SHEET 6: 2-STAGE INLINE PRE-TREATMENT WASHER

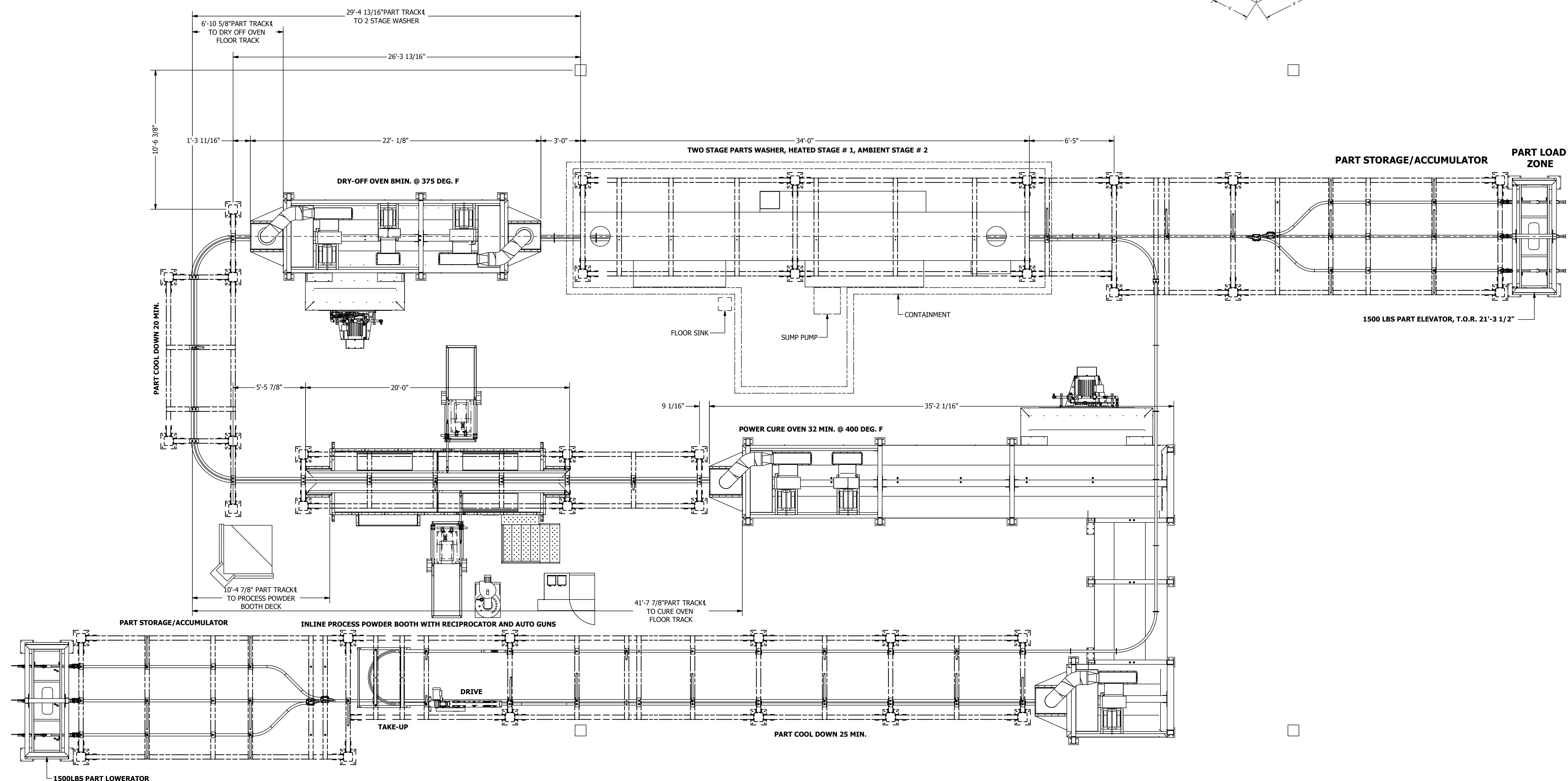
ROHNER CUSTOM POWDER PRIME LINE

- (1) EA. 2-STAGE INLINE PRE-TREATMENT WASHER
- (1) EA. NG FIRED CONVECTION DRY-OFF OVEN
- (1) EA. INLINE PROCESS POWDER BOOTH
- (1) EA. AUTO POWDER GUN PACKAGE WITH RECIPROCATORS, ROTARY SIEVE AND HOPPER
- (1) EA. NG FIRED CONVECTION CURE OVEN
- (1) INTEGRAL EQUIP. & FLOOR MOUNT CONVEYOR SUPPORT STRUCTURE.
- (1) EA. POWER AND FREE CONVEYOR SYSTEM

WARE PACKAGE: 12" W X 168" T X 12" L WITH 30° KEY, MAX LOAD: 500#, MAX LINEAR LOAD: 100 #/FT. DESIGN CAPACITY: 15,000/HR.



TAG	DIM. INCHES	NOTES
A	6	Use dim A only for single hanger
B		part hanger spacing
C	30	Dim. from part to T.O.R.
X	12	Part length parallel conveyor
Y	12	Part width
Z	108	Part height



APPROVED FOR CONSTRUCTION

SYSTEM LAYOUT
NOT TO SCALE

ROHNER MECHANICAL, INC.
1000 W. PARKER RD.
2650 W. ANDRESSER RD.
SUITE 102
WACO, WA 98661
(360) 885-7641 VOICE
WA LIC # R009610015H
OR LIC # 135549
CA# 792654
WWW.ROHNER-USA.COM



A CUSTOM POWDER FINISHING SYSTEM FOR:
PRESCIENT
2125 SENATOR RALPH SCOTT PARKWAY
MEBANE, NC 27302

DRAWN BY: RDC
CHECKED BY: DGR

© 2007-2016 ROHNER ALL RIGHTS RESERVED.
THIS DOCUMENT AND THE IDEAS EXPRESSED HEREIN ARE THE EXCLUSIVE PROPERTY OF ROHNER AND IS NOT TO BE REPRODUCED IN ANY MANNER WITHOUT THE EXPRESS WRITTEN AUTHORIZATION OF ROHNER.

ISSUED DATE: 10-7-2016
REV: 16.2 / 12-12-2016
DESCRIPTION OF CHANGE(S):
UPDATED PER RICHARDS-WILCOX CONVEYOR TRACK

DRAWING TITLE:
SYSTEM LAYOUT
ISOMETRIC
DRAWING

JOB NO:
R2016151
EQUIP. NO:
SYSTEM LAYOUT

SHEET NO: