

ONLINE AUCTION

WORLD CLASS FABRICATION SHOP Surplus to The Needs of Southeast Florida OEM

THURSDAY, JUNE 9TH @ 11:00AM ET BidSpotter



AMADA HG2204-RH PRECISION HIGH SPEED BENDING CELL



AMADA HM1003 110 TON X 10'2" 7-AXIS CNC PRESS BRAKE



AMADA (5) DRAW TOOL CABINET WITH FULL COMPLIMENT OF AMADA TOOLING



AMADA MARVEL MSIW126D-SPARTAN HYDRAULIC IRONWORKER

INSPECTION: BY APPOINTMENT ONLY
Assets Located at 9040 Belvedere Road, West Palm Beach, Florida 33411

PRESTIGE EQUIPMENT AUCTIONS
35 Pinelawn Road, Suite 203W,
Melville, NY 11747
631-249-5566
auctions@prestigeequipment.com
www.prestigeequipment.com



in
conjunction
with



REVELATION MACHINERY
917 W. 18th St., STE 202 (Office #4)
Chicago, IL 60608
618-266-3780
tim@revelationmachinery.com
www.revelationmachinery.com

REGISTER & BID ONLINE: **BidSpotter**

AMADA CNC PRESS BRAKES



2018



AMADA HG2204-RH PRECISION HIGH SPEED BENDING CELL

2018 AMADA HG2204-RH PRECISION HIGH SPEED BENDING CELL, 220 Ton x 14' Bending Length, 20.5" Open Height, AMNC 3i CNC, CNC Hydraulic Crown Adjustment, Hydraulic Upper Ram Clamping, Yaskawa Model 165 6-Axis Robot with 19.7" Linear Travel, 364 Max. Part Weight, Mfg. Date: 2018 (Approx. 5,381 Total on Time Hours and 3,445 Run Hours)

- The Hybrid Drive HG2204 press brake is a Servo-Hydraulic precision press brake with fast approach, bending and return speeds. Equipped with a potentiometer back gauge system specifically designed to integrate in an automated bending system.
- The six-axis robot, designed for bending operations, is mounted on a rail in front of the machine which acts as a 7th axis enabling close proximity bending and maximizes the part swing envelope
- The HG2204 is equipped with the 2-Axis BI-s to speed setup and control bend angle during processing
- Unique hands and reposition device decrease processing times on large panels and complex channel shapes
- The 6.0-meter stroke track provides ample room for loading and unloading the largest part



2018



AMADA HM1003 110 TON X 10'2", 7-AXIS CNC PRESS BRAKE

AMADA HM1003 110 TON X 10'2", 7-AXIS CNC PRESS BRAKE, AMNC Graphic PC Based Control, 7.9" Stroke, 16.5" Throat Depth, 18.5" Open Height, 4-Axis Back Gauge, Hydraulic Proportional Valve, Amada One-Touch Upper Tool Holders, S/N: 1003 Mfg. Date: 2018

AMADA TOOL CABINETS, TOOLING & PLASMA CUTTING TABLE



AMADA 5-DRAWER TOOL BOX & CONTENTS OF PRESS DIES



AMADA PRESS BRAKE DIES

AMADA TOOL CABINET & TOOLING:

AMADA 5-DRAWER TOOL BOX & CONTENTS OF PRESS DIES

AMADA PRESS BRAKE DIES, (6) Upper Punches, (8) Lower Dies

2017



LINCOLN TMX-0614 6' X 14' PLASMA CUTTING TABLE

PLASMA CUTTING TABLE:

2017 LINCOLN TMX-0614 6' X 14' PLASMA CUTTING TABLE, Accumove 3 PC Control, Dual Y-Axis Drive, Precision X-Axis Linear Drive, Flex-Cut 80 Amp. Plasma Cutting Power Supply, 3/4" Maximum Production Cut Capacity (Pierce Start), 1-1/4" Maximum Edge Start, Full Cable Carrier 6'x 14' Water Cutting Table, S/N: TMX17-236

AMADA MARVEL IRON WORKER, BAND SAW & MORE



2020

AMADA MARVEL MSIW126D-SPARTAN HYDRAULIC IRONWORKER



2020

AMADA MARVEL S330HV SPARTAN HORIZONTAL MITERING BAND SAW



2018

DAKE 3" BELT SANDER



DAKE DRILL PRESS

BELT SANDER: 2018 DAKE MDL. 961001-2 3" BELT SANDER, S/N 1399911, 4 HP, 3300 RPM Motor, 220V, 3PH

DRILL PRESS: DAKE MDL. SB-250V VARIABLE SPEED DRILL PRESS, S/N 1808030, 16mm Drill Chuck, Autofeed Down Stroke, 5" Stroke, 13" x 13" Table, Allen-Bradley PowerFlex 4M 1.5 HP VFD, 220V,

JIB CRANE: 2ALL LIFT CRANES MDL. TRW420 20'L COLUMN MOUNTED JIB CRANE, S/N 4144-01, with Pittsburgh 1320 Lb. Capacity Electric Cable Hoist

HYDRAULIC IRONWORKER:

2020 AMADA MARVEL MSIW126D-SPARTAN HYDRAULIC IRONWORKER, 95 Ton, 14" Throat, 6" x 3/4" Angle, 1-3/8" Dia. Punch in 1", 24" x 5/8" Shear Capacity, (5) Workstations, Dual Foot Controls, 23 Strokes/Minute, 6,550 Lbs., S/N: 270, 06/2020

HORIZONTAL BANDSAW:

2020 AMADA MARVEL S330HV SPARTAN HORIZONTAL MITERING BAND SAW, 1" Blade, 3 HP, 13" Round Capacity, 18" x 12" Rectangle, 12" x 12" at 45 Degrees, 60-330 FPM Blade Speed, 60 Deg. Miter Cutting, Hyd. Vise, S/N: S330HV-235, 06/2020



ALL LIFT CRANES COLUMN MOUNTED JIB CRANE

BLAST BOOTH, PAINT BOOTH, PAINT MIX ROOM & BATCH OVENS



2018

DELONG ABRASIVE BLAST BOOTH

BLAST BOOTH:

2018 DELONG ABRASIVE BLAST BOOTH, 18' x 24' Inside Dimensions, 14' Double Door, Clemco Blast Pot and Gun, Abrasive Reclaim System, Donaldson Torit DFE 4-16 (8) Cartridge Dust Collector, Air Holding Tank



2018

14' W x 24' D

GLOBAL FINISHING SOLUTIONS PAINT BOOTH



2018

GLOBAL FINISHING SOLUTIONS PAINT MIXING ROOM

PAINT BOOTH & PAINT MIX ROOM:

2018 GLOBAL FINISHING SOLUTIONS PAINT BOOTH, GPCDG-141024-NSB, 14' x 24' Inside Dimensions, 10' Door Opening, Air Filtration, Interior Lighting, Double Doors, S/N: U88405-D

2018 GLOBAL FINISHING SOLUTIONS PAINT MIXING ROOM, 112" x 112" Overall Dimension, Interior Lighting, Personnel Door with Window, 4" Deep Containment Base, ½ HP TEFC Motor, Exhaust Plenum Fan

BATCH CURING OVENS- (3) AVAILABLE:

2018 GLOBAL FINISHING SOLUTIONS BATCH PROCESS OVEN, GBO-121016-TM-Custom, Top Mount Air Makeup Unit, 12' Wide x 15' Deep x 10' Height Inside Dimensions, S/N: U88405-B



2018

(3) AVAILABLE

12' W x 15' D x 10' H

GLOBAL FINISHING SOLUTIONS BATCH PROCESS OVEN

CAR LIFTS, PRESSURE WASHER & AIR COMPRESSORS

2018



STRATUS MODEL SAE-2PON14KDS CAR LIFT

HYDRAULIC CAR LIFTS:

2018 STRATUS MODEL SAE-2POH14KDS 2-POST HYDRAULIC AUTOMOTIVE LIFT, 14,000 Lb. Capacity, 74" Max Lift Height, 220V, 1PH, S/N SAE-1803-09

2018 STRATUS MODEL TP11KC-DX 2-POST HYDRAULIC AUTOMOTIVE LIFT, 11,000 Lb. Capacity, 76" Lifting Height, S/N: GLNOV.2-0.0154, Note: Brand New, Never Used



BRAND NEW NEVER USED

STRATUS MODEL TP11KC-DX CAR LIFT



PRESSURE PRO HOT PRESSURE WASHER

HOT PRESSURE WASHER:

PRESSURE PRO 3000 HOT WATER PRESSURE WASHER, 5 GPM, Natural Gas

AIR COMPRESSORS:

INDUSTRIAL AIR MODEL IH9919910 10HP HORIZONTAL AIR COMPRESSOR, 120 Gallon Tank, 2-Stage Cast Iron Pump, 200 Max PSI, 230V, 3PH, S/N 1303108X2542752

2021 QUINCY COMPRESSOR MODEL QTV-54E 5HP VERTICAL AIR COMPRESSOR, 60 Gallon Tank, 175 Maximum PSI, S/N UTY557694

2018 INGERSOLL RAND MODEL UP6-7.5TAS-150PSG AIR COMPRESSOR, 120 Gallon Tank, 40-90 PSIG, 150 PSI Max Pressure, 23.1 Max CFM, 7220.4 Running Hours, 200V, 3PH, S/N CBV591081



INDUSTRIAL AIR COMPRESSOR

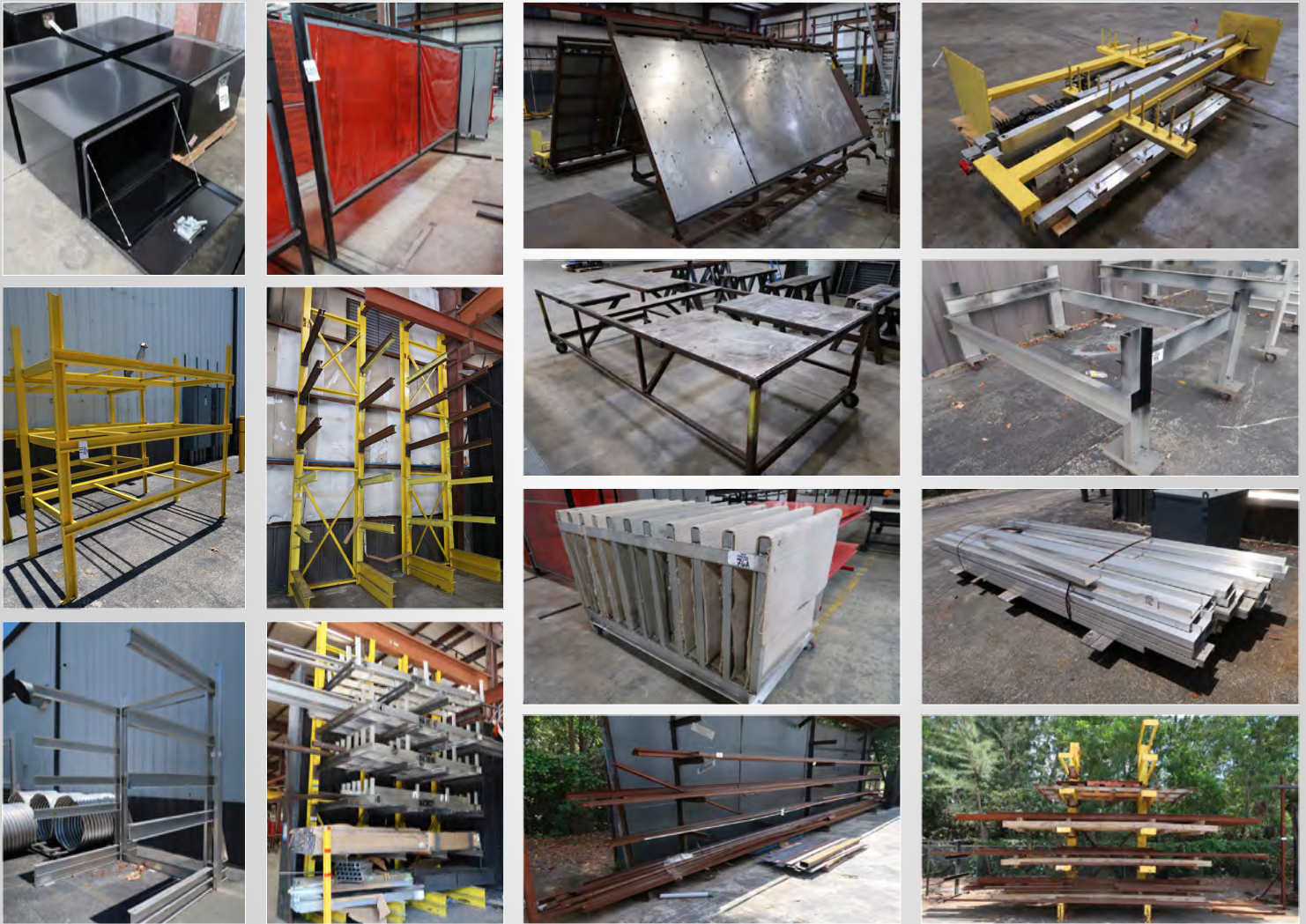


QUINCY AIR COMPRESSOR



INGERSOLL RAND AIR COMPRESSOR

PLANT SUPPORT, CANTELEVER RACKS, RAW MATERIAL, WORK TABLES, NEW UTILITY BOXS & MORE



****PAYMENT:** A buyer's premium of 18% will be charged to all purchases. ALL PURCHASES MUST BE PAID IN FULL UPON RECEIPT OF AN INVOICE. An electronic invoice will be sent to the successful bidder at the email address provided during registration, typically within 24 hours after the auction ends. Upon notification of being the successful bidder, Purchasers will have 48 hours to pay in full via wire transfer, certified check or company check. PLEASE NOTE, all company checks MUST be accompanied by a bank letter of guarantee made out to Prestige Equipment Corp. The full purchase price must be paid prior to the removal of any goods.

****RIGGING AND REMOVAL:** Rigging, removal and any duty fees are the sole responsibility of the Purchaser. Purchaser shall be responsible for the safe and proper removal of any assets purchased by Purchaser. Purchaser or its agents must remove all assets purchased before the final removal date and time specified by Prestige (the "Removal Date"). Any assets not removed on or prior to the Removal Date shall be subject to storage charges that Prestige may impose in its sole discretion. ANY ITEMS NOT REMOVED ON OR PRIOR TO THE REMOVAL DATE SHALL BE DEEMED ABANDONED AND PRESTIGE SHALL HAVE NO FURTHER OBLIGATION TO BUYER WITH RESPECT TO SUCH ITEMS.

****FOR MORE INFO:** Please contact Frank DiSalvo at +1-631-249-5566 or frank@prestigeequipment.com

WORLD CLASS FABRICATION SHOP Surplus to The Needs of Southeast Florida OEM

**ONLINE AUCTION
THURSDAY, JUNE 9TH @ 11:00AM**

BidSpotter

INSPECTION: BY APPOINTMENT ONLY

Assets Located at 9040 Belvedere Road, West Palm Beach, Florida 33411

PRESTIGE EQUIPMENT AUCTIONS
35 Pinelawn Road, Suite 203W,
Melville, NY 11747
631-249-5566
auctions@prestigeequipment.com
www.prestigeequipment.com



in
conjunction
with



REVELATION MACHINERY
917 W. 18th St., STE 202 (Office #4)
Chicago, IL 60608
618-266-3780
tim@revelationmachinery.com
www.revelationmachinery.com

REGISTER & BID ONLINE: **BidSpotter**