

ONLINE AUCTION



FIBER LASER FABRICATION SHOP, STEEL ROOTS DECOR

LIKE NEW 2020 LASERS, PRESS BRAKES,
METAL FINISHING, AND POWDER COATING

BidSpotter WEDNESDAY, JANUARY 26TH, 2022 @ 11:00AM ET



MAZAK OPTIFLEX 3015 III 8 kW CNC FIBER LASER



MAZAK OPTIFLEX NEXUS 3015 6 kW CNC FIBER LASER



MAZAK OPTIFLEX NEXUS 3015 4 kW CNC FIBER LASER



NUKON VENTO L4020 6 kW CNC FIBER LASER

INSPECTION: JANUARY 24TH & 25TH, 2022
Assets Located at: 632 Richardson Road SE, Calhoun, Georgia 30701

PRESTIGE EQUIPMENT AUCTIONS
35 Pinelawn Road, Suite 203W,
Melville, NY 11747
631-249-5566
auctions@prestigeequipment.com
www.prestigeequipment.com



REGISTER & BID ONLINE:
BidSpotter

www.prestigeequipment.com/auction/precision-laser-facility/

CNC FIBER LASERS



MAZAK OPTIFLEX 3015 III 8 kW CNC FIBER LASER

CNC FIBER LASERS:

MAZAK OPTIFLEX 3015 III 8 kW CNC FIBER LASER, 60" x 120"
Travel, Mazatrol CNC, IPG YLS-8000 Power Supply, Auto Nozzle Changer, IPG Chiller, Camfil Dust Collector, Machine on Hours: 9,753, Cutting Hours: 1,630, Serial No.: 311483, Mfg. Date: 06/2020, Installed 11/2020

MAZAK OPTIFLEX NEXUS 3015 6 kW CNC FIBER LASER, 60' x 120"
Travel, Mazatrol CNC, IPG YLS-6000 Power Supply, Auto Nozzle Changer, IPG Chiller, Camfil Dust Collector, Machine on Hours: 9,623, Cutting Hours: 2,040 Serial No.: 310084, Mfg. Date: 03/2020, Installed 11/2020

MAZAK OPTIFLEX NEXUS 3015 4 kW CNC FIBER LASER, 60' x 120"
Travel, Mazatrol CNC, IPG YLS-4000 Power Supply, Auto Nozzle Changer, IPG Chiller, Plaser Dust Collector, Machine on Hours: 27,960, Cutting Hours: 4,999, Serial No.: 291855, Mfg. Date: 03/2018, Installed 09/2018



MAZAK OPTIFLEX NEXUS 3015 6 kW CNC FIBER LASER



MAZAK OPTIFLEX NEXUS 3015 4 kW CNC FIBER LASER

CNC FIBER LASERS & PRESS BRAKE

2019



80" x 159" TRAVEL

NUKON VENTO L4020 6 kW CNC FIBER LASER

CNC FIBER LASERS:

NUKON VENTO L4020 6 kW CNC FIBER LASER, 80" x 159" Travel, 19" TFT Touch Screen CNC, IPG -YLS6000-CUT Resonator, High Speed Linear Drive Axis, Chiller, Nukon Dust Collector, Machine on Hours: Approx. 18,209, Cutting Hours Not Available
Serial No.: 7087, Mfg. Date: 04/2019

JORDI LUX SERIES 3015 6 kW CNC FIBER LASER, 60" x 120" Travel, Mazatrol CNC, IPG YLS-6000-CUT Power Supply, IPG Chiller, ACT Dust Collector, Machine on Hours: Approx. 8,700, Cutting Hours: Approx. 1,877 Hours, Serial No.: 280818, Mfg. 2019

2019



JORDI LUX SERIES 3015 6 kW CNC FIBER LASER

2019



DELEM DA-66T CNC

NUKON ACCURI GENIUS 13' X 242 TON 6-AXIS CNC PRESS BRAKE

CNC PRESS BRAKE:

NUKON ACCURI GENIUS 13' X 242 TON 6-AXIS CNC PRESS BRAKE, Delem DA-66T 6-Axis CNC Control, Wila New Standard Hydraulic Upper Clamping, 162" Overall Bed, 129.75" Distance Between Housings, 16" Throat Depth, 12.6" Stroke, CNC Crowning Die, Serial No.: 080255, Mfg. Date: 2019

WILA New Standard Tooling Package

TIMESAVER SANDING AND DEBURRING

2020



TIMESAVER SANDING AND DEBURRING:

TIMESAVER LYNX

37MWT-DD-60 37", Two Sanding Heads, Recirculating Coolant, Serial No.: 34708, Mfg. Date: 2020

TIMESAVER LYNX

37MWT-DD-60 37", Two Sanding Heads, Recirculating Coolant, Serial Number: 33826, Mfg. Date: 2018

TIMESAVER 2221-23-04 37"

DRY, Wet Dust Collector, Mfg. Date: 2020

TIMESAVER 1121-11-00 TWO

HEAD 10", Wet Type, Serial No.: 34374, Mfg. Date: 2020

TIMESAVER 1121-11-0 SINGLE

HEAD 10", Wet Type, Serial No. 34492, Mfg. Date: 2020

TIMESAVER LYNX 37MWT-DD-60 37"

2020



TIMESAVER 1121-11-00 TWO HEAD 10" WET TYPE SANDER

2020



TIMESAVER 2221-23-04 37" DRY TYPE SANDER

POWDER COAT PAINT BOOTHS & OVENS

POWDER COAT PAINT BOOTHS:

(4) OVEN EMPIRE MANUFACTURING POWDER BOOTHS, 11'8" W x 8' T x 10' Deep, CM-8000 Cartridge Filtration Systems, Mfg. Date: 08/2020

POWDER COAT PAINT CURE OVENS:

(4) OVEN EMPIRE MANUFACTURING BATCH OVENS, 7' W x 8' T x 10' Deep, Gas, 800K BTU, Mfg. Date: 11/2020

POWDER COAT PAINT GUNS & ROLLING PART RACKS:

(8) KCI KX1 POWDER DELIVERY SYSTEMS with Powder Guns

(30) Rolling Part Racks

2020

4-AVAILABLE



OVEN EMPIRE MANUFACTURING POWDER BOOTHS

2020

4-AVAILABLE



OVEN EMPIRE MANUFACTURING BATCH OVENS

8-AVAILABLE



KCI KX1 POWDER DELIVERY SYSTEMS WITH POWDER GUNS

WELDERS, FACTORY SUPPORT & MORE!



(2) SCHULZ SRP 4025 AIR COMPRESSORS



Tsunami REGENERATIVE AIR DRYER



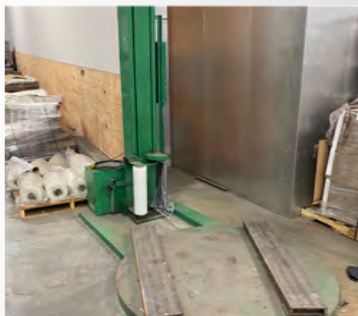
LAWSON SCREEN PRINTER



(2) MILLER SPOT WELDERS



LINCOLN WELDER



SHRINK WRAPPER



HOTSY PRESSURE WASHER



LARGE QUANTITY OF PALLET RACKING



(30)+ ROLLING PART RACKS



CENTRAL BLAST BOOTH



SOUTH BEND SANDER

PLUS: Mig Welders, Spot Welders, Pallet Racking, Assorted Raw Material, (30) Plastic Utility Carts, Lawson Screen Printer, Power Tools, Shop Tables, Tool Cabinets & Air Compressors

****PAYMENT:** A buyer's premium of 18% will be charged to all purchases. ALL PURCHASES MUST BE PAID IN FULL UPON RECEIPT OF AN INVOICE. An electronic invoice will be sent to the successful bidder at the email address provided during registration, typically within 24 hours after the auction ends. Upon notification of being the successful bidder, Purchasers will have 48 hours to pay in full via wire transfer, certified check or company check. PLEASE NOTE, all company checks MUST be accompanied by a bank letter of guarantee made out to Prestige Equipment Corp. The full purchase price must be paid prior to the removal of any goods.

****RIGGING AND REMOVAL:** Rigging, removal and any duty fees are the sole responsibility of the Purchaser. Purchaser shall be responsible for the safe and proper removal of any assets purchased by Purchaser. Purchaser or its agents must remove all assets purchased before the final removal date and time specified by Prestige (the "Removal Date"). Any assets not removed on or prior to the Removal Date shall be subject to storage charges that Prestige may impose in its sole discretion. ANY ITEMS NOT REMOVED ON OR PRIOR TO THE REMOVAL DATE SHALL BE DEEMED ABANDONED AND PRESTIGE SHALL HAVE NO FURTHER OBLIGATION TO BUYER WITH RESPECT TO SUCH ITEMS.

****FOR MORE INFO:** Please contact Frank DiSalvo at +1-631-249-5566 or frank@prestigeequipment.com



FIBER LASER FABRICATION SHOP, STEEL ROOTS DECOR

LIKE NEW 2020 LASERS, PRESS BRAKES,
METAL FINISHING, AND POWDER COATING

BidSpotter WEDNESDAY, JANUARY 26TH, 2022 @ 11:00AM ET

INSPECTION: JANUARY 24TH & 25TH, 2022

Assets Located at: 632 Richardson Road SE, Calhoun, Georgia 30701

PRESTIGE EQUIPMENT AUCTIONS
35 Pinelawn Road, Suite 203W,
Melville, NY 11747
631-249-5566
auctions@prestigeequipment.com
www.prestigeequipment.com



REGISTER & BID ONLINE:
BidSpotter

www.prestigeequipment.com/auction/precision-laser-facility/

ONLINE AUCTION

ACCURPRESS FABRICATION SHOP, PILOT FABRICATION

BidSpotter **WEDNESDAY, JANUARY 26TH @ 3:00PM ET**

Like New Condition 2019 Accurpress 175 Ton x 12' Press Brake, 2019 Accurshear ¼" x 12' Shear, Press Brake Tooling Package, JD Squared Pipe Bender, Miller 275 Tig, (2) Millermatic 252 Welders, Jet Box and Pan Brake, Drill Press, Band Saw, Tool Cabinets, Hand Tools, Fork Truck and More!



2019
ACCURPRESS 717512
175 TON CNC PRESS BRAKE



PRESS BRAKE TOOLING
PACKAGE & RACK



2019
ACCUR-SHEAR 62510
HYDRUALIC SHEAR



2018
JET BP-1272
BOX & PAN BRAKE



JD SQUARED MODEL
54 PIPE BENDER



LINCOLN TIG WELDER &
(2) MILLERMATIC MIG WELDERS



MILWAUKEE
PANEL SAW



JET HORIZONTAL
BAND SAW



~~TOYOTA 6,000-LB.~~
~~FORKLIFT~~

ADDITIONAL PLANT SUPPORT: SCMI Vertical Band Saw, Jet Drill Press, Jet Router and Dust Collector, Panel Saw, CR Clarke 1500D Plastic Strip Heater Folding Machine, Hand and Powers Tools, Steel Work Table and More!

**** NOTE: THE LOTS FOR THIS AUCTION WILL CLOSE IMMEDIATELY FOLLOWING THE COMPLETION OF THE PRECISION FIBER LASER FABRICATION AUCTION - STEEL ROOTS DECOR ****

CLICK HERE FOR MORE INFORMATION

DATE:



**JANUARY 26
3:00PM ET**



LOCATION:



**LITHIA SPRINGS,
GEORGIA**

CONTACT FRANK DISALVO FOR INFO

frank@prestigeequipment.com | (631) 249-5566

CALL: (631) 249-5566

auctions@prestigeequipment.com