

# 2-DAY ONLINE AUCTION

## HUB CITY GEARING WORLD CLASS GEARBOX MANUFACTURING FACILITY



**200,000 SQUARE FEET! THOUSANDS OF ITEMS!**

**DAY 1:** CNC Machining Centers, CNC Lathes, CNC & Manual Grinders, Mills, Drills, Toolroom Equipment, CMMs, Inspection, Presses, Shop Support, Hand Tools, Tooling, Vises, Shop Support, Etc.

**DAY 2:** Heat Treat, Finishing, CAT 50 Tool Holders, Tooling, Tool Carts & Cabinets, Forklifts, Pallet Jacks, Jib Cranes, Steel Tables, Air Compressors, Floor Sweepers, Tractors, Steel Racking, Hoppers, Shop Support, Etc.

**BidSpotter DAY 1- (LOTS 1-712) TUESDAY, FEBRUARY 15<sup>TH</sup> @ 10:00AM CT**  
**DAY 2- (LOTS 712A-1314) WEDNESDAY, FEBRUARY 16<sup>TH</sup> @ 10:00 AM CT**



KIA KIACENTER H63 HMC, FANUC 15M CNC,  
25" PALLETS, 60 ATC, CHIP CONVEYORS



TOYODA FH80B HMC, FANUC 15M CNC,  
32" PALLETS, 96 ATC, CHIP CONVEYORS



UT.MA AFFILATRICE LC35 CNC  
TOOL SHARPENER, SN 0107



42" BLANCHARD ROTARY  
SURFACE GRINDER



MORI SEIKI MODELS SL10C, SL200MC, SL35B,  
SL25M5; OKUMA MODELS LB25, LB15, LC20M



25-TON X 120" OILGEAR XL50B HORIZONTAL  
BROACHING MACHINE, SN 66486



JLG E450 AJ  
BOOM LIFT



FELLOWS 10-2  
GEAR SHAPER



CAT 50 TOOL HOLDERS, CARBIDE INSERTS,  
DRILLS, REAMERS, HOBS, ARBORS, ETC.

**INSPECTION: FEBRUARY 10<sup>TH</sup>, 11<sup>TH</sup> & 14<sup>TH</sup>, OR BY APPOINTMENT**  
**Assets Located at: 2914 Industrial Avenue, Aberdeen, South Dakota 57401**

PRESTIGE EQUIPMENT AUCTIONS  
35 Pinelawn Road, Suite 203W,  
Melville, NY 11747  
631-249-5566  
auctions@prestigeequipment.com  
www.prestigeequipment.com



in  
conjunction  
with



WISCONSIN METALWORKING  
MACHINERY INC.  
2207 S West Ave, Waukesha, WI 53189  
262-548-6080  
sales@wismet.com  
www.wismet.com

REGISTER ONLINE AT: **BidSpotter**



# CNC HORIZONTAL & VERTICAL MACHINING CENTERS



**32" PALLETS**

TOYODA FH80B CNC HMC



**32" PALLETS**

TOYODA FH80 CNC HMC



**25" PALLETS**

TOYODA FA630 CNC HMC

## CNC HORIZONTAL MACHINING CENTERS:

**TOYODA FH80B**, Fanuc 15M CNC, Travels: X-47.2", Y-39.4", Z-35.4", Dual 31.5" Pallets, 64 ATC, CAT 50 Taper, Chip Conveyor, SN NM7624

**TOYODA FH80**, Fanuc 15M CNC, Travels: X-47.2", Y-39.4", Z-35.4", Dual 31.5" Pallets, 96 ATC, CAT 50 Taper, Chip Conveyor, SN NM6972

**TOYODA FA630**, Fanuc 15M CNC, Travels: X-39.4", Y-31.5", Z-33.5", Dual 24.8" Pallets, 60 ATC, CAT 50 Taper, Chip Conveyor, SN NM7622

**(3) KIA KIA CENTER H63**, Fanuc 15M CNC, Travels: X-37.4", Y-32.5", Z-29.9", Dual 24.8" Pallets, 60 ATC, CAT 50 Taper, Chip Conveyors, SNs KH63002, 630103, 630120

**TOYODA FA550**, Fanuc 15M CNC, X-39.4", Y-39.4", Z-31.5", Dual 24.8" Pallets, 45 ATC, Chip Conveyor, SN NM7516

**TOYODA FH-45**, Fanuc 11M CNC, Travels: X-23.6", Y-22", Z-19.7", Dual 17.7" Pallets, 30 ATC, SN NR6891

**MITSUI HS-3A**, Fanuc 15M CNC, Travels: X-22", Y-22", Z-22", 60 ATC, Chip Conveyor, SN NM6891

## CNC VERTICAL MACHINING CENTERS:

**MAZAK AJV 32/605**, X-59", Y-27.6", Z-18", Twin Pallets, ATC, Mazatrol M32 CNC, Chip Conveyor, SN 76038

**MAZAK VQC-20**, Mazatrol M-2 CNC, ATC, SN 62718



**3-AVAILABLE**

**25" PALLETS**

KIA KIA CENTER H63 CNC HMC



**22" PALLETS**

TOYODA FA550 CNC HMC



**18" PALLETS**

TOYODA FH-45 CNC HMC



**16" PALLETS**

MITSUI HS-3A CNC HMC



**2-APC**

MAZAK AJV 32/605 CNC TWIN PALLET VMC



MAZAK VQC-20 CNC VMC



# CNC TURNING CENTERS & BROACHES



**LIVE MILLING**

**MORI SEIKI SL-200MC CNC TURNING CENTER**



**HUGE CAPACITY**

**MORI SEIKI SL-10 CNC LATHE**



**MORI SEIKI SL-35 CNC TURNING CENTER**



**MORI SEIKI SL-25 CNC TURNING CENTER**



**OKUMA LB-25 CNC TURNING CENTERS**



**OKUMA LB-15 CNC TURNING CENTERS**



**MORI SEIKI SL-25M CNC TURNING**

## CNC TURNING CENTERS:

**MORI SEIKI SL-200MC**, MSD501 (Fanuc) CNC, 18" Swing, 20" Center Distance, C-Axis, Milling, Part Catcher, Tailstock, Chip Conveyor, SMW Spacesaver Bar Feed, SN 629

**MORI SEIKI SL-35**, Fanuc 10T CNC, 23.6" Swing, 36" Center Distance, 12" Chuck, Tailstock, Chip Conveyor

**MORI SEIKI SL-10**, Fanuc 6T CNC, 39.4" Swing, 74.83" Turning Length, 36" 3-Jaw Power Chuck, Upper & Lower Turrets, Chip Conveyor

**MORI SEIKI SL-25M**, Fanuc CNC Control, 20.5" Swing, 25" Center Distance, 3-Jaw Chuck, 12-Station Turret, Live Milling, Tailstock, Chip Conveyor

**MORI SEIKI SL-25**, MORI MF-T4 CNC, 20.5" Swing, 25" Center Distance, 3-Jaw Chuck, 12-Station Turret, Tailstock, Chip Conveyor, SN 4780

**(2) OKUMA LB-25**, OSP-5020L CNC, 18.9" Swing, 27.4" Center Distance, 3-Jaw Chuck, Tailstock, Chip Conveyor, SN 9393 & 9391

**(6) OKUMA LB-15**, OSP-5020L CNC, 15.75" Swing, 19.7" Center Distance, 3-Jaw Chuck, Tailstock, Chip Conveyor, SNs A500 & A090; (SNs 1350, 1435, 1436, 1438)

**OKUMA LB15**, OSP-5000L CNC, SMW SPACESAVER 265 Bar Feed

**(2) OKUMA LC-20M**, OSP5000L CNC, 15.75" Swing, 20" Center Distance, 3-Jaw Chuck, Upper & Lower Turret, C-Axis, Live Milling, Chip Conveyor

## BROACHING MACHINES:

**LAPOINTE HP30 HORIZONTAL BROACHING MACHINE**, 15-Ton x 66" Capacity, SN 56086

**OILGEAR XL50B HORIZONTAL BROACHING MACHINE**, 25-Ton x 120" Capacity, SN 66486

**PLUS:** Huge Quantity of Broach Tooling



**LAPORTE HP30 HORIZONTAL BROACH**



**120" STROKE**

**OLIGEAR XL50B HORIZONTAL BROACH**



# CNC & MANUAL GRINDERS



**2011**  
UT.MA AFFILATRICE LC35 CNC  
TOOL SHARPENING MACHINE



**CNC**  
OKUMA GP-34N CNC CYLINDRICAL GRINDER



**CNC** **ANGLEHEAD**  
OKUMA GA-34N CNC ANGLEHEAD GRINDER



**CNC**  
OKUMA GI-20N CNC INTERNAL GRINDER



**CNC**  
HEALD 271/S SIZEMATIC INTERNAL GRINDER



**REBUILT**  
12" X 36" NORTON CYLINDRICAL GRINDER

## CNC TOOL GRINDER & SHARPENER:

2011 UT.MA AFFILATRICE LC35 CNC TOOL SHARPENING MACHINE, SN 0107, X-13.77", Y-9.84", Z-13.38", Paper Filtration, Royal Mist Collector [2011]

## CNC & MANUAL CYLINDRICAL GRINDERS:

OKUMA GP-34N CNC CYLINDRICAL GRINDER, OSP-5020G CNC, 16" x 3" WHEEL, Marposs E-5 Gauging, Mist Buster, Coolant Unit, Sludge Conveyor, SN 0230

OKUMA GA-34N CNC ANGLEHEAD CYLINDRICAL GRINDER, OSP-5020G CNC, X & Z Axes Pulse Handwheel, Tailstock, Coolant & Sludge Conveyor, SN 0220

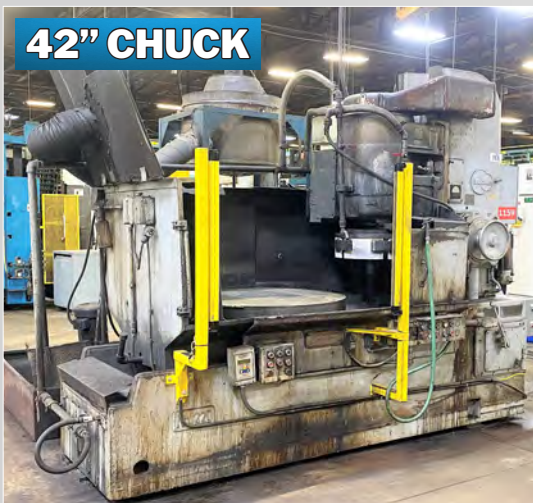
12" X 36" NORTON MODEL 6X36 LC-5 CYLINDRICAL GRINDER, 24" x 3" Wheel, SN 28828

## CNC & MANUAL I.D. GRINDERS:

OKUMA GI-20N CNC INTERNAL GRINDER, OSP-5000L CNC, 15.75" Swing, 7.8" Grinding Length, ID Grinding Spindle, Coolant, SN B354-4183-56

OKUMA GI-20N CNC INTERNAL GRINDER, OSP-5000LG CNC, 15.75" Swing, 7.8" Grinding Length, ID Grinding Spindle, Coolant, SN 611.0027

HEALD 271/S SIZEMATIC INTERNAL GRINDER, SN G.2663



**42" CHUCK**  
42" BLANCHARD ROTARY SURFACE GRINDER



10 X 16 COVEL HORIZONTAL SURFACE GRINDER



BURR KING BELT GRINDER

## ROTARY SURFACE GRINDER:

42" BLANCHARD 22D-42, SN 13925, 42" Magnet, Segmented Wheel, Approx. 18" Under Wheel, Coolant & Mist Collection System

## MISC. GRINDERS:

10 X 16 COVEL HORIZONTAL SURFACE GRINDER, Finline Magnetic Chuck, Mist Buster, SN 17PH-1713

BURR KING BELT GRINDERS, Misc. Tool & Cutter Grinders, Double End Pedestal Grinders, & More!



# GEAR MACHINERY



FELLOWS 10-2 GEAR SHAPER



REISHAUER RZ300E GEAR GRINDER



PFAUTER RS00S GEAR HOBBER

## GEAR MACHINERY:

(2) FELLOWS 10-2 GEAR SHAPER, 12" & 8" 3-Jaw Chuck, SN 35785 (12" 3-Jaw Chuck), SN 35981 (8" 3-Jaw Chuck)

REISHAUER RZ300E GEAR GRINDER, SN 54700-21, 300mm Max. Tip Diameter, 180mm Workpiece Slide Travel, with 2004 Rossdale Coolant System

PFAUTER P630 GEAR HOBBER, 25" Max. Gear Diameter, 3 D.P., 16.25" Max. Face Width, 17" Centers, 22" Table Dia., 7.5" x 10" Max. Hob, Chip Conveyor, SN 20946

GLEASON PFAUTER RS2-E GEAR HOBBER, 20" Table, Tailstock, SN 418151G4

PFAUTER RS00S GEAR HOBBER, SN 22903, Diagram No. S00-4/84-1-II-c

GLEASON GEAR CHECKERS, SN 18640, 21058

LARGE QUANTITY CHANGE GEARS, HOBS, ARBORS, ETC.



PFAUTER P630 GEAR HOBBER



GLEASON PFAUTER RS2-E GEAR HOBBER



GLEASON GEAR CHECKERS



PRATT & WHITNEY 6 X 20 MODEL C THREAD MILLS



LEES-BRADNER THREAD MILLER

## THREAD MILLS:

(2) PRATT & WHITNEY 6 X 20 MODEL C THREAD MILLS, 6" Capacity, SNs 23380, 25593

LEES-BRADNER THREAD MILLER, SN HT1431



# MILLS, ENGINE LATHES & MISC. MACHINERY



**2-AVAILABLE**  
SUMMIT VS550B VERTICAL UNIVERSAL MILL



BRIDGEPORT SERIES II VERTICAL MILL



BRIDGEPORT VERTICAL UNIVERSAL MILL



BRIDGEPORT VERTICAL UNIVERSAL MILL



KONDIA POWERMILL VERTICAL MILL

## MILLS:

**SUMMIT VS550B VERTICAL UNIVERSAL MILL**, 52" x 11" Table, Adjustable Knee, Power Feed, 40 Taper, DRO, SN 7349, 7350

**BRIDGEPORT SERIES II VERTICAL UNIVERSAL MILL**, Power Feed, Mitutoyo DRO

**BRIDGEPORT VERTICAL UNIVERSAL MILL**, Power Feed, Accu-Rite DRO, SN 262859

**BRIDGEPORT VERTICAL UNIVERSAL MILL**, ACU-RITE III DRO, Power Feed, Column Riser, SN 147644

**KONDIA POWERMILL VERTICAL UNIVERSAL MILL**, Variable Speed



20" X 40" WASINO LEO-125A ENGINE LATHE



17" X 40" WASINO LEO-125A ENGINE LATHE

## ENGINE LATHES:

**20" X 40" WASINO LEO-125A ENGINE LATHE**, 10" Chuck, Aloris Tool Post, Steady Rest, DRO, SN 449-1266-H

**17" X 40" WASINO LEO-125A ENGINE LATHE**, 10" Chuck, Aloris Tool Post, Accu-Rite DRO

**17" X 60" SHARP 1760 ENGINE LATHE**, Aloris Tool Post, Taper Attachment, Steady Rest, DRO, SN C20179, [1994]

**15" X 50" CLAUSING COLCHESTER 15" SERIES 600 ENGINE LATHE**, 10" Chuck, 25-2000 RPM, Taper Attachment, DRO, SN GT0295

**17" X 40" MAGI 1740 ENGINE LATHE**, With Polishing Equipment

## MISC. MACHINERY:

**IKEDA 5' X 13" RADIAL ARM DRILL**, Model RN-1517, SN 82608, with Box Table

**CARLTON 3' X 9" RADIAL ARM DRILL**, with Box Table

**PLUS:** Large Quantity of Floor & Bench-Mounted Drill Presses, Belt Grinders, Pedestal Grinders, Arbor Presses, Etc.



17" X 60" SHARP 1760 ENGINE LATHE



15" X 50" CLAUSING COLCHESTER ENGINE LATHE



IKEDA 5' X 13" RADIAL DRILL



# CMMS, INSPECTION, HEAVY DUTY STEEL TABLES & MORE



TESA MICRO-HITE 3D CMM



ZEISS UNIVERSAL LENGTH MEASURING DEVICE



J & L OPTICAL COMPARATOR



VARIOUS SIZED GRANITE TABLES & STANDS

## CMMS, INSPECTION & QUALITY CONTROL:

(2) TESA MICRO-HITE 3D COORDINATE MEASURING MACHINES, With MH 3D Control, SNs 09120024, 09120027

MITUTOYO B-706 COORDINATE MEASURING MACHINE, Granite Table, Probe, SN 8906307

ZEISS AUS JENA MODEL ULM 01-600C UNIVERSAL LENGTH MEASURING DEVICE

14" JONES & LAMSON PC-14A OPTICAL COMPARATOR, SN E-46087

STUHR BENCH CENTERS, 60" Between Centers

PLUS: Enormous Quantity Of Inspection Equipment, Including Calipers, Micrometers, Height Gages, Ring Gages, Pin Gage Sets, Hardness Testers, Dial Indicators, PLUS: Dozens of Various Sized Granite Tables & Stands



STUHR BENCH CENTERS



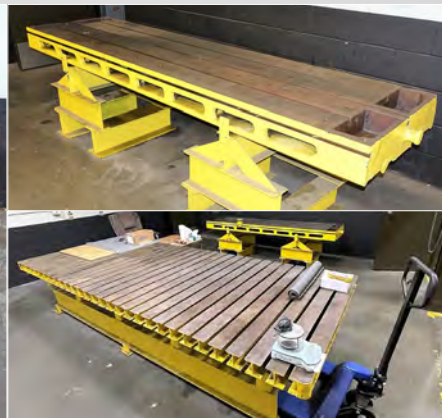
118" X 36" HYDRAULIC STEEL TILTING TABLE



ENORMOUS QUANTITY OF INSPECTION EQUIPMENT



T-SLOTTED TABLES



## HEAVY DUTY STEEL TABLES:

118" X 36" HYDRAULIC STEEL TILTING TABLE

152" X 60" T-SLOTTED TABLE

108" X 96" T-SLOTTED TABLE

60" X 36" T-SLOTTED TABLE



# HEAT TREAT, PAINT BOOTHS & PARTS WASHERS



**LINDBERG 1800°  
GAS FURNACE**



**LINDBERG 1250° ELECTRIC  
DRAW FURNACE**



**LINDBERG 1850° GAS OIL  
QUENCH FURNACE**



**LINDBERG 2000°  
ELECTRIC GENERATOR**



**LINDBERG 1900°  
GAS GENERATOR**



**LINDBERG 1200 DEGREE  
ELECTRIC DRAW FURNACE**



**LINDBERG 200°  
ELECTRIC OVEN**



**TRANSFER CART FOR FURNACES**



**RICHWOOD RST-5000  
PART WASHER**



**INDUSTRIAL PARTS WASHER**

## HEAT TREAT DEPARTMENT:

**LINDBERG 1800 DEG. 750,000 BTU  
GAS FURNACE**, Oil Quench & Top  
Cool, Model 13-243624-VT-18AQC-1,  
24" x 36" x 24" PART, SSI Interface,  
Rebricked & Retubed 2020, SN 23777

**LINDBERG 1250 DEG. ELECTRIC  
DRAW FURNACE**, Model 13-  
EOF-243624-12, 24" x 36" x 24" Part,  
45 kW, Air Operated Door, SN 25193

**LINDBERG 1850 DEG. FURNACE**,  
Converted To Gas Oil Quench and Top  
Cooled, 24" x 36" x 24" Part, Model  
13-CT-243624-1840-1, (Rebricked &  
Retubed In 2020) SN 25191

**LINDBERG 2000 DEG. 18 KW  
ELECTRIC ENDOTHERMIC  
ATMOSPHERE GENERATOR**, Model  
16-80-750-A3 HYEN, 750 CFH,  
SN 25195

**LINDBERG 1900 DEG. GAS  
ENDOTHERMIC ATMOSPHERE  
GENERATOR**, Type 16-1000-A3  
HYEN, 390,000 BTU, Atmosphere  
Engineering Control, SN 23778

**LINDBERG 1200 DEG. FRONT LOAD  
ELECTRIC DRAW FURNACE**, 24" x  
36" x 24" Part

**LINDBERG 200 DEG. ELECTRIC  
WASHER**, Type T8-SH-243624-10S,  
45 kW., SN 25194

## PAINT BOOTHS & PARTS WASHERS:

**DEVILBISS PAINT ARRESTOR TYPE SPRAY BOOTH**  
**EAC PAINT SYSTEM WITH HAND SPRAY**, Infrared Drying  
**RICHWOOD RST-5000 PART WASHING MACHINE**, SN 01120010  
**INDUSTRIAL PARTS WASHER**



**DEVILBISS PAINT ARRESTOR TYPE SPRAY BOOTH**



**EAC PAINT SYSTEM WITH INFRARED DRYING**



# BAND SAWS, PRESSES & MORE



**POWERMATIC VERTICAL BAND SAW WITH WELDER**



**(2) HYD-MECH H-12 HORIZONTAL BAND SAW**



**DAKE 75-TON H-FRAME PRESS**

## METAL CUTTING BAND SAWS:

(2) HYD-MECH H-12 HORIZONTAL BAND SAW, SN PLZ100 Control, Auto Feed, SNs A0193073, A0194209H

(2) POWERMATIC MODEL 87 VERTICAL BAND SAW WITH BLADE WELDER, SN 67-7823

## PRESSES:

DAKE 75-TON H-FRAME HYDRAULIC PRESS, Model 75H, SN 193890

DAKE 70-TON H-FRAME HYDRAULIC PRESS

DAKE 40-TON H-FRAME PRESS, Model 5-022, SN 151079

LEMPCO 40-TON AIR HYDRAULIC H-FRAME PRESS, Series 500A, SN 3510

ARBOR PRESS, MHP25 TON PRESS 1990

SPX 25 TON POWER TEAM PRESS

PLUS: Numerous H-Frame Hydraulic Presses, Air Presses, Dake Arbor Presses, & More!



**DAKE 70-TON H-FRAME PRESS**



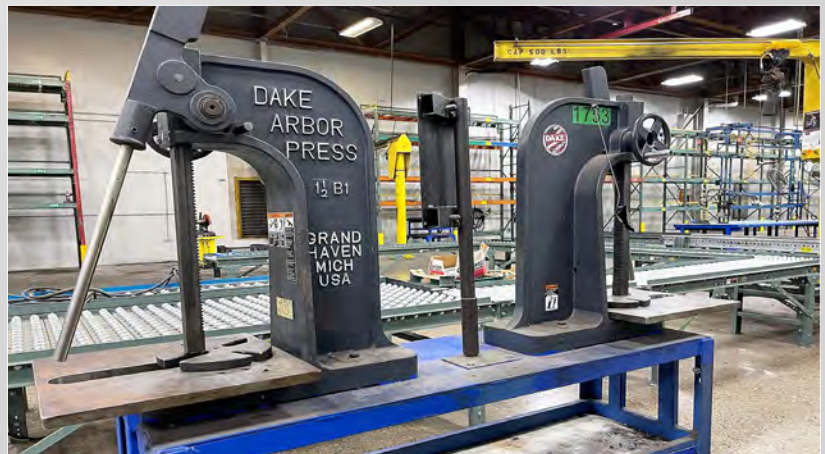
**DAKE 40-TON H-FRAME PRESS**



**LEMPCO 40-TON H-FRAME PRESS**



**MISCELLANEOUS AIR & HYDRAULIC PRESSES**



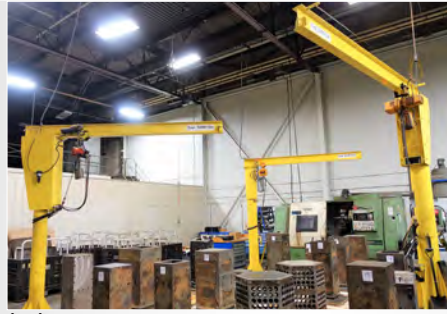
**NUMEROUS ARBOR PRESSES**



# CRANES, FORKLIFTS, TRACTORS & MORE



R & M FREE STANDING BRIDGE CRANE



(60) JIB CRANES UP TO 1-TON CAPACITY

## CRANES:

R & M MATERIAL HANDLING FREE-STANDING OVERHEAD CRANE SYSTEM, with (2) 5-Ton and (1) 2-Ton Top Running Hoists, 60' x 20' Runway

JIB CRANES: APPROXIMATELY (60) ASSORTED 1/4-Ton, 1/2 Ton, & 1-Ton Capacity, with Hoists

## FORKLIFTS, PALLET JACKS & MANLIFTS:

TOYODA 9000LB FORKLIFT MODEL 52-6FGCU45, LP, Side Shift, SN 60897

TOYODA 4500LB FORKLIFT MODEL 7FGCU25, LP, Side Shift, SN 97579

TOYODA 4500LB FORKLIFT MODEL 7FGCU25, LP, Side Shift

RAYMOND 4500LB STAND UP ELECTRIC FORKLIFT, Model EASI R40TT

CATERPILLAR 3000LB STAND UP ELECTRIC FORKLIFT, Model NRR30, SN 2GL00819

JLG E450 AJ BOOM LIFT, 45' Max. Platform Height, SN 0300076022

SKYJACK 4626 SCISSOR LIFT MANLIFT



TOYODA 9000 LB FORKLIFT



TOYODA 4500 LB FORKLIFT



TOYODA 4500 LB FORKLIFT



RAYMOND 4500 LB FORKLIFT



CATERPILLAR FORKLIFT



SKYJACK SCISSOR MANLIFT



JLG BOOM LIFT

## FLOOR GRINDERS, SCRUBBERS, & SWEEPERS:

TENNANT 7100 FLOOR SCRUBBER

TENNANT 6200 FLOOR SWEEPER

TERRCO MODEL 2000 FLOOR GRINDER

## TRACTORS:

JOHN DEERE TRACTOR, MODEL 2320, With Salt Spreader, Blower, Brush, & Sweeper, 5600 HOURS

JOHN DEERE TRACTOR, MODEL X495, With Mower Deck



TENNANT 7100 FLOOR SCRUBBER



TENNANT 6200 FLOOR SWEEPER



TERRCO MODEL 2000 FLOOR GRINDER



JOHN DEERE TRACTOR MODEL 2320



JOHN DEERE TRACTOR MODEL X495



# AIR COMPRESSORS, MISC. SHOP SUPPORT & MORE!



**HARRIS BALER**



**CARDBOARD BALER**



**LEPEL HEATING UNIT**

## AIR COMPRESSORS & MISC. SHOP SUPPORT:

**HARRIS WASTE MANAGEMENT V5-HD BALER, SN 0918601651 (Brand New)**

**CARDBOARD BALER**

**LEPEL T-30-3-KC-TL42**

**INDUCTION HEATING UNIT**

**QUINCY QGV-150 AIR**

**COMPRESSOR & AIR TAK DRYER**

**GARDNER-DENVER ELECTRA-SAVER AIR COMPRESSOR**

**PLUS: SPEEDY PACKER, Welders, Sump Pumps, Wood Saw, Test Machines, Engine Lifters, Conveyors, Etc.**



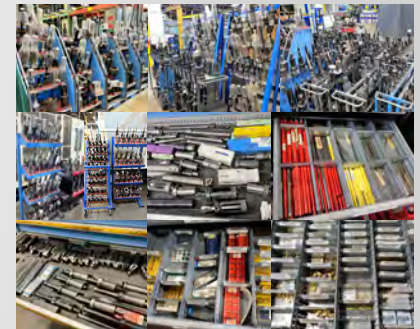
**GARDNER-DENVER AIR COMPRESSOR**



**HEAVY DUTY STEEL RACKING**



**TOOL CABINETS- HUGE QUANTITY CAT 50 TOOL HOLDERS & MORE!**



## ENORMOUS QUANTITY OF TOOLING & SHOP SUPPORT:

1000+ CAT 50 Tool Holders, Carbide & Perishable Tooling, Gear Hobs, Change Gears, LISTA & VIDMAR Tool Cabinets, Rolling Tool Boxes, Tool Holder Carts, JOBOX Job Boxes, Hand Tools, Big-Ass Ceiling Fans, Dozens of Shop Fans, Ladders, Tables, Racks, Scrap Hoppers, Transformers, Belt Grinders & Sanders, Conveyors, Hundreds of Steel Baskets & Collapsible Plastic Bins, Conveyors, Test Machines, and Much, Much More!

**RACKING & SHELVING:** Approximately 250 Sections of Heavy Duty Steel Racking, 4000LB to 10,000LB Shelf Weight Capacity

**\*\*PAYMENT:** A buyer's premium of 18% will be charged to all purchases. ALL PURCHASES MUST BE PAID IN FULL UPON RECEIPT OF AN INVOICE. An electronic invoice will be sent to the successful bidder at the email address provided during registration, typically within 24 hours after the auction ends. Upon notification of being the successful bidder, Purchasers will have 48 hours to pay in full via wire transfer, certified check or company check. PLEASE NOTE, all company checks MUST be accompanied by a bank letter of guarantee made out to Prestige Equipment Corp. The full purchase price must be paid prior to the removal of any goods.

**\*\*RIGGING AND REMOVAL:** Rigging, removal and any duty fees are the sole responsibility of the Purchaser. Purchaser shall be responsible for the safe and proper removal of any assets purchased by Purchaser. Purchaser or its agents must remove all assets purchased before the final removal date and time specified by Prestige (the "Removal Date"). Any assets not removed on or prior to the Removal Date shall be subject to storage charges that Prestige may impose in its sole discretion. ANY ITEMS NOT REMOVED ON OR PRIOR TO THE REMOVAL DATE SHALL BE DEEMED ABANDONED AND PRESTIGE SHALL HAVE NO FURTHER OBLIGATION TO BUYER WITH RESPECT TO SUCH ITEMS.

**\*\*FOR MORE INFO:** Please contact Paul Lashin at +1-631-249-5566 or paul@prestigeequipment.com

# HUB CITY GEARING – WORLD CLASS GEARBOX MANUFACTURING FACILITY

**DAY 1- (LOTS 1-712) TUESDAY, FEBRUARY 15<sup>TH</sup> @ 10:00AM CT**

**DAY 2- (LOTS 712A-1314) WEDNESDAY, FEBRUARY 16<sup>TH</sup> @ 10:00 AM CT**

**INSPECTION: FEBRUARY 10<sup>TH</sup>, 11<sup>TH</sup> & 14<sup>TH</sup> OR BY APPOINTMENT**

**Assets Located at: 2914 Industrial Ave, Aberdeen, SD 57401**

PRESTIGE EQUIPMENT AUCTIONS  
35 Pinelawn Road, Suite 203W,  
Melville, NY 11747  
631-249-5566  
auctions@prestigeequipment.com  
www.prestigeequipment.com



in  
conjunction  
with



WISCONSIN METALWORKING  
MACHINERY, INC.  
2207 S West Ave, Waukesha, WI 53189  
262-548-6080  
sales@wismet.com  
www.wismet.com

REGISTER & BID ONLINE: **BidSpotter**