

LIVE WEBCAST

SURPLUS TO ONGOING OPERATIONS OF MARELLI USA COMPLETE MACHINING & DIE CASTING FACILITY



BidSpotter **THURSDAY, NOVEMBER 11TH @ 10:00AM ET**



2017
PORTA SOLUTIONS 8-STATION CNC ROTARY TRANSFER MACHINE



2012
COLOSIO PFO-750 785-TON DIE CAST MACHINES

2-AVAILABLE



2007
MAKINO A71 CNC HORIZONTAL MACHINING CENTER



2018
WHEELABRATOR CONVEYOR-TYPE ABRASIVE BLAST MACHINE

INSPECTION: NOVEMBER 9TH & 10TH, 2021
Assets Located at: 2101 Nash Street, Sanford, North Carolina 27330

PRESTIGE EQUIPMENT AUCTIONS
35 Pinelawn Road, Suite 203W,
Melville, NY 11747
631-249-5566
auctions@prestigeequipment.com
www.prestigeequipment.com



in
conjunction
with



HOLLAND INDUSTRIAL GROUP
13105 NW 42nd Ave,
Opa-locka, FL 33054
305-638-5838
contact@hollandindustrialgroup.com
www.hollandindustrialgroup.com

REGISTER ONLINE AT: **BidSpotter**

CNC MACHINERY

2017



PORTA SOLUTIONS CNC ROTARY TRANSFER MACHINE

CNC 8-STATION ROTARY TRANSFER MACHINE:

2017 PORTA SOLUTIONS TRV-08-N-16-90-110/HSK50-HSK63-FMU 8-STATION CNC ROTARY TRANSFER MACHINE, Siemens Sinumerik HT2 CNC Control, 15,000 RPM, HSK63 Taper, 140mm Feed Stroke, 25 HP Motor, High Pressure Coolant, Paper Filtration System, Chip Conveyor, S/N 101196/2017

CNC HORIZONTAL MACHINING CENTERS:

2007 MAKINO A71 CNC HORIZONTAL MACHINING CENTER, Makino PRO-5 CNC, 29" x 29" x 32" Travels, 20" Pallets, 12,000 RPM, 60 ATC, Chip Blaster High Pressure Coolant, Chip Conveyor, SN 632, New 2007

CINCINNATI MAXIM HPC-500XT CNC HORIZONTAL MACHINING CENTER, FANUC 16iM CNC, 30" x 28" x 35" Travels, 20" Pallets, CAT 50, 40 ATC, Chip Conveyor, SN KA00D03010007

CINCINNATI MILACRON MAXIM 500 CNC HORIZONTAL MACHINING CENTER, 30" x 28" x 30" Travels, 20" Pallets, CAT 50 Taper, 7000 RPM, 40 ATC, Acramatic 950 CNC, Chip Conveyor, 2-Available, SNs 7039A0A970902 & 3631B0194-0027

2007



MAKINO A71 CNC HORIZONTAL MACHINING CENTER



CHIRON 5-AXIS CNC VERTICAL MACHINING CENTER



HAAS TM1 CNC MACHINING CENTER

CNC VERTICAL MACHINING CENTERS:

CHIRON DZ-15K-W 5-AXIS CNC TWIN-SPINDLE VERTICAL MACHINING CENTER, 5-Axis Twin Spindle/Twin Pallet, FANUC 18iM, 25" x 16" x 14" Travels, 12K RPM, Thru Spindle Coolant, (2) CNC Trunnion Rotary Tables, KNOLL Filtration, Chip Conveyor, 2003

HAAS TM1 CNC TOOLROOM MILL & MACHINING CENTER, SN 33289, 30" x 12" x 16" Travels, ATC, 40 Taper, HAAS CNC Control, 2003

CINCINNATI MILACRON SABRE 1000 CNC VERTICAL MACHINING CENTER, 40" x 20" x 20" Travels, 20 ATC, Acramatic 2100 CNC, SN 7039A0A970902, with NIKKEN 2-Axis CNC Rotary Trunnion Table



CINCINNATI MILACRON SABRE CNC VERTICAL MACHINING CENTER



CINCINNATI MAXIM HPC-500XT CNC HORIZONTAL MACHINING CENTER



CINCINNATI MAXIM 500 CNC HORIZONTAL MACHINING CENTER

1 OF 2

DIE CAST, INJECTION MOLDERS & RELATED EQUIPMENT

2012



1 OF 2

COLOSIO PFO-750 785-TON DIE CAST MACHINE



SOLD!

FRECH 800-TON DIE CAST MACHINE



B & T 700-TON DIE CAST MACHINE

DIE CAST EQUIPMENT & THERMAL REGULATOR UNITS:

(2) 2012 COLOSIO PFO-750 785-TON HORIZONTAL COLD CHAMBER ALUMINUM HIGH PRESSURE DIE CAST MACHINES, SN 1763 & 17678, with Comau Robots, Dynarad Crucible Furnace, Diesse 25-Ton Trim Presses

FRECH M-800-71 800-TON ALUMINUM DIE CAST MACHINE, SN 440402 with Dynarad Crucible Furnace, Metal Mechanics 20-Ton Trim Press **SOLD!**

B & T 700-TON ALUMINUM DIE CAST MACHINE, 52" Between Tie Bars, 50" x 50" Platens, Dynarad Furnace, Aercology Mist System

B & T 650-TON ALUMINUM DIE CAST MACHINE, 0" Between Tie Bars, 50" x 50" Platens, Dynarad Furnace, Aercology Mist System, Metal Mechanics 20-Ton Trim Press

LESTER 700-TON ALUMINUM DIE CAST MACHINE, 52" Between Tie Bars, 50" x 50" Platens, 29.53" Stroke, Dynarad Furnace, Aercology Mist System, Metal Mechanics 20-Ton Trim Press

(6) DYNARAD MELTING & HOLDING FURNACE, Including Models EG1500, MS500, EC1500, Approx 74.36 Gal. Capacity

(3) 2018 REGOPLAS P160MD/8/SM73/S K/RT100 THERMAL REGULATOR UNIT, SN 117501180001, 117501180002, 117501180003, New 2018



B & T 650-TON ALUMINUM DIE CAST MACHINE



LESTER 700-TON ALUMINUM DIE CAST MACHINE



2018

1 OF 3

REGOPLAS THERMAL REGULATOR UNIT



1 OF 6

DYNARAD MELTING & HOLDING FURNACE



ENGEL 60TL 60-TON CNC HORIZONTAL PLASTIC INJECTION MOLDER



1 OF 2

ENGEL PLASTIC INJECTION MOLDER

INJECTION MOLDERS:

ENGEL 60TL 60-TON CNC HORIZONTAL PLASTIC INJECTION MOLDER, Engle CNC Control, 60 Ton Capacity, 2.2 OZ. 25mm Shot, 25" x 16.93" Platen Size, 13" Clamp Stroke, 7" Mold Height, 20" Daylight 20 HP, 480V, With Allen-Bradley 300 PanelView Control, And AECO TCO-1 Temperature Control Unit, 480V, 100 PSI, S/N 39L6661

(2) ENGEL MODEL 85 CNC VERTICAL PLASTIC INJECTION MOLDER, 3-Ton Opening Clamp, 11" Clamp Stroke, 11"-22" Mold Height, 21" x 13" Plate Size, 38" Rotary Table, 5" Ejector Stroke, 2-Ton Ejector Force, 44 Lb. Hopper Cap., 3000 PSI, 480V/3/60, S/N 8979-085-97 & 8978-085-97 With Regal 2000 HE Temperature Control Unit

SHOT BLASTS, PARTS WASHERS & TRIM PRESSES



2018

WHEELABRATOR CONVEYOR-TYPE ABRASIVE BLAST MACHINE



2011

WHEELABRATOR HANGER-TYPE ABRASIVE BLAST MACHINE

SHOT BLASTS:

2018 WHEELABRATOR CONVEYOR-TYPE ABRASIVE BLAST MACHINE, 48" Pass Height, 36" x 118" Elevator, Down Flow Hopper, 25' Conveyor, SN 601415, New 2018

2011 WHEELABRATOR HANGER-TYPE ABRASIVE BLAST MACHINE, 43" x 56" Single Door Opening, 29 HP, Approx. 10' Of Motorized Track S/N 3843, New 2011

PARTS WASHERS:

MART TORNADO 60 HEAVY DUTY PARTS WASHER, 64" x 60", Swing Out Carousel, S/N 8150, 460/3/60 Electrics

PROCECO MB 18 X12-E-2W-2R-BO-SS TUNNEL PARTS WASHER, 144" x 12" Opening, 25 Lb. Max. Belt Capacity, S/N 05-610

CAE RANSOHOFF H-2326 4-TANK PASS-THROUGH PARTS WASHER WITH CONVEYOR, 28"W x 10"H Opening, Approx. 35' Of Conveyor, 4-Tanks Ranging From 325 Gal., 70 Gal. And 250 Gal. 460V/3/60, S/N H2870



MART TORNADO PARTS WASHER



PROCECO TUNNEL PARTS WASHER



CAE RANSOHOFF PARTS WASHER WITH CONVEYOR



2012

1 OF 2

DIESSE 25-TON TRIM PRESS



SOLD!

1 OF 2

METAL MECHANICS 20-TON VERTICAL TRIM PRESS



GREENARD 30-TON VERTICAL TRIM PRESS

TRIM PRESSES:

2012 DIESSE T25 NG +S 25-TON TRIM PRESS, 31.5" Stroke, 32" Shut Height, 2-Avail, SN 2879 & 2882, New 2012

METAL MECHANICS 20-TON TRIM PRESS, 20" Stroke, 30" Open Height, 2-Avail, SN 2947 & 2699 **SOLD!**

GREENARD HCA-30-3 OR 8 30-TON VERTICAL TRIM PRESS, 18" Stroke, 36" x 24" Table, 14" Throat, 30" Daylight Maximum Open Distance, 480V/3/60, S/N 97T5248

CMMS, TESTING & INSPECTION EQUIPMENT



2004

ZEISS PRISMO CMM



2007

B & S ONE 7-10-7 CMM

COORDINATE MEASURING MACHINES:

2004 ZEISS PRISMO ACCESS 9/12/9 CMM, 35" x 60" x 20" Travels, Granite Table, Zeiss Vast XT Probe, SN 115246, New 2005

2007 BROWN & SHARPE ONE 7-10-7 CMM, 28" x 39" x 25" Travels, Granite Table, Renishaw PH10M Probe, SN 0307-7117, 2007



JR AUTOMATION FIRE TURBO MANIFOLD ASSEMBLY

TESTING & INSPECTION EQUIPMENT:

JR AUTOMATION TECHNOLOGIES FIRE TURBO MANIFOLD ASSEMBLY, Consisting Of: 1- Allen-Bradley Plus 1000 Panel View Control; 1- Allen-Bradley Plus 700 Panel-View Control; 1- Cincinnati Sentinel C28 Test System; 1- Fanuc M-20iA 6-Axis Robot With Fanuc System R-30iB Control, Fanuc Pendant; 2- 12"W x 7'L Conveyors; Approx. 8'W x 8'L x 98"H Tinted Window Enclosure; 24"L x 41"W Server Rack; 1- Dell Power R720 Unit; 1- Dell UPS1920W Unit, 1- 19" HP L1908W Computer Screen Keyboard & Mouse

ESPEC EPX-4H THERMAL CHAMBER, 40" W x 40" H x 36" D, 230V/50-60Hz, 230 Volt, 50-60 Hz, S/N 011C725

THERMOTRON S-1.2C THERMAL CHAMBER, 12.5"D x 16"W x 11" H, 1 Ph, 40 AmPSI, 60 Hz, With Thermotron 2800 Programmer/Controller, S/N 25084

SINTECH MODEL QT/5 TENSILE STRENGTH TEST SYSTEM, 120V, 508mm/ M Speed Clutch S/N 181310/092297

LEICA M651 MICROSCOPE, 65mm Field-Of-View & Spot Illumination, 5-Step Magnification (4X, 6X, 10X, 16X, 25X), Fine Focus, With Sony 12" Monitor

NIKON MODEL VM-150 CNC VIDEO MEASURING SYSTEM, X-Axis 300mm, Y-Axis 300mm, Z-Axis 150mm Stroke

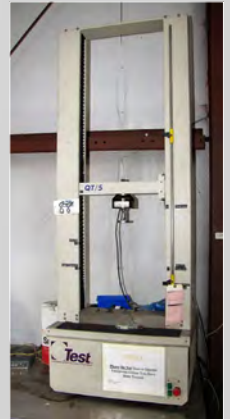
TEST STATION WITH CLECO MPRO400 GC PRIMARY GLOBAL CONTROLLER, 30" Intelli-Arm With Hand held Torque Wrench, Mounted To 35"W x 33"L Aluminum Fixture Plate, Allen-Bradley Plus 700 Panel View



ESPEC EPX-4H THERMAL CHAMBER



THERMOTRON THERMAL CHAMBER



SINTECH TENSILE STRENGTH TEST SYSTEM



1 OF 4

LEICA M651 MICROSCOPE



NIKON CNC VIDEO MEASURING SYSTEM



1 OF 17

TEST STATION

CRANES & MATERIAL HANDLING



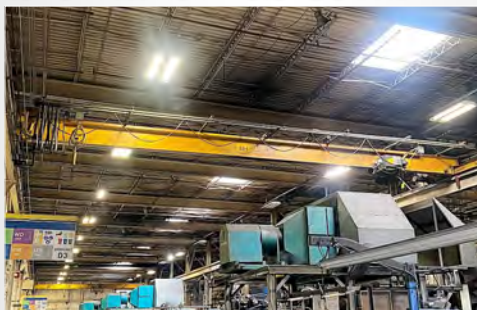
15-TON PIEDMONT HOIST & CRANE



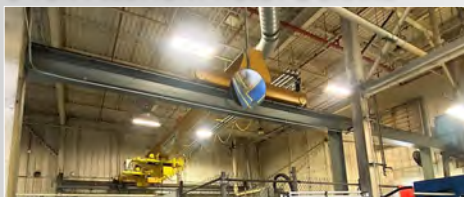
10-TON PIEDMONT HOIST & CRANE



5-TON PIEDMONT HOIST & CRANE



5-TON PIEDMONT HOIST & CRANE



10-TON ENGINEERED SYSTEMS CRANE

CRANES:

15-TON PIEDMONT HOIST & CRANE OVERHEAD BRIDGE CRANE, 15-Ton x Approx. 35' Span, With (2) Detroit 7-1/2-Ton Cable Hoist, To Include Approx. 87' L Runway Rails

10-TON PIEDMONT HOIST & CRANE OVERHEAD BRIDGE CRANE, 10-Ton x Approx. 19' Span, With Yale 10-Ton Cable Hoist, To Include Approx. 105' Runway Rails

5-TON PIEDMONT HOIST & CRANE OVERHEAD BRIDGE CRANE, 5-Ton x Approx. 38' Span, With Work-Rated 5-Ton Cable Hoist

5-TON PIEDMONT HOIST & CRANE OVERHEAD BRIDGE CRANE, 5-Ton x Approx. 38' Span, With Street 5-Ton Cable Hoist

10-TON ENGINEERED SYSTEMS OVERHEAD CRANE, Approx. 38' Span, (2) 5-Ton Acco Wright Cable Hoist To Include Approx. 32' L Runway Rails



ACCO WRIGHT ELECTRIC CABLE HOIST

MATERIAL HANDLING:

YALE MODEL NR35DBNM24TE087 ELECTRIC FORKLIFT, 7050 HOURS, 36 Volt, 5 Degree Back Tilt, 2850 lb. Max Capacity, 187" Load Height, 24" Load Center, 42" Fork Attachment, S/N. B295N02306N

YALE MODEL ESC030ACN36TE082 ELECTRIC FORKLIFT, 7520 Hours, 36 Volt, 5 Degree Back Tilt, 2850 lb. Max Capacity, 187" Load Height, 24" Load Center, 42" Fork Attachment, S/N. B883N04174N

YALE MODEL NR35DBNM24TE087 ELECTRIC FORKLIFT, 7050 Hours, 36 Volt, 5 Degree Back Tilt, 2850 lb. Max Capacity, 187" Load Height, 24" Load Center, 42" Fork Attachment, S/N. B295N02306N

YALE MODEL ESC030ACN36TE082 ELECTRIC FORKLIFT, 12322 Hours, 36 Volt, 5 Degree Back Tilt, 2850 lb. Max Capacity, 187" Load Height, 24" Load Center, 42" Fork Attachment, S/N. B883N04169

ACCO WRIGHT MODEL 14208 1000 LB. CAPACITY ELECTRIC CABLE HOIST, 1000 lbs. Capacity Cable Hoist, 49' Lift 22 FPM, 1800 RPM, 7.5 Hp, 3 Ph, 230-460 Volt, S/N. 775489A-8

LR ALTRA 5000 LB. PALLET JACK, Model ALT50, 5000 Lb. Capacity

(9) SECTIONS OF PALLET RACKING, 9,000 Lb. Capacity (11) 10' H Up-Rights, Approx. (54) 5' L Cross Beams With Metal Decking



(9) SECTIONS OF PALLET RACKING



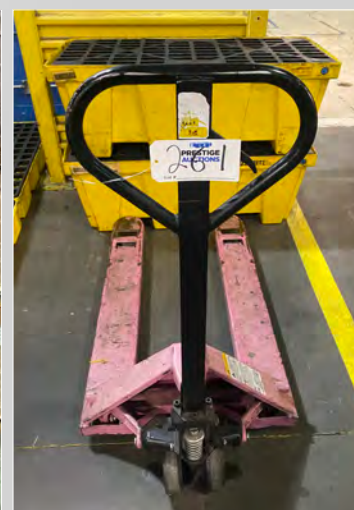
YALE ELECTRIC FORKLIFT



YALE ELECTRIC FORKLIFT



YALE ELECTRIC FORKLIFT



LR ALTRA PALLET JACK

AIR COMPRESSORS & VACUUM PUMPS



SULLAIR 7500PSI/A AIR COMPRESSOR



ZEKS 600HSFA400 HEATSINK CYCLING AIR DRYER



SULLAIR MODEL SLR-250 AIR COMPRESSOR



ZEKS AIR DRYER



SULLAIR MODEL 407106 AIR COMPRESSOR



SULLAIR MODEL 02250096-704 AIR COMPRESSOR



SULLAIR MODEL BASE MOUNT ROTARY SCREW AIR COMPRESSOR

AIR COMPRESSORS:

SULLAIR 7500PSI/A AIR COMPRESSOR, 480 Volt, 125 Max Air Press Rated 135 PSI., S/N. 201101200036

ZEKS 600HSFA400 HEATSINK CYCLING AIR DRYER, 300 Max. PSI., 460 Volt, 60 Hz, 4 Hp

SULLAIR MODEL 407106 AIR COMPRESSOR, 200 PSI. 230/460 Volt

SULLAIR MODEL 02250096-704 AIR COMPRESSOR, 200 PSI. 230/460 Volt

SULLAIR MODEL SLR-250 AIR COMPRESSOR, 203 Rated Input, 230 Volt, 60 Hz

SULLAIR MODEL VS20-25/A/SRF BASE MOUNT ROTARY SCREW AIR COMPRESSOR, 125 PSI., 460 V 3 Ph, S/N 003-V86999

ZEKS MODEL 1600NCF400 HEATSINK CYCLING AIR DRYER, 300 Max. PSI, 460V/3Ph, 4 HP, S/N 546474-2



LEYBOLD VACUUM PUMP



QUINCY ROTARY SCREW VACUUM PUMP



NASH SIZE CL 1002 VACUUM DRY PUMP

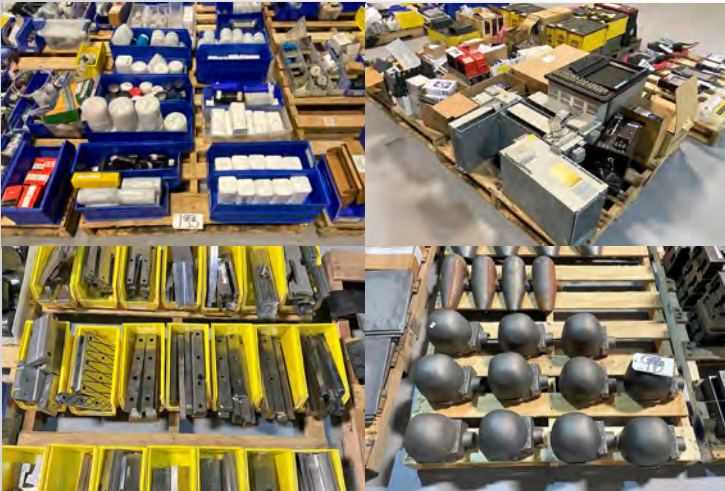
VACUUM PUMPS:

QUINCY MODEL QSVI50AN3A 50 HP ROTARY SCREW VACUUM PUMP, 50 HP, 3560 RPM S/N 91842J

LEYBOLD FRANCE MODEL SV1200 VACUUM PUMP, 677 CFM, 230/460 Volt, 30 Hp, 1800 RPM, 60 Hz, S/N. 31001750384

NASH VACUUM DRY PUMP, Size CL 1002, POS. 4, 880 RPM, With Test Equipment mdl. 22053 Control Panel And Pace Maker Motor 1170 RPM, 60 Hp, 364T Frame

MISC. MACHINERY, SHOP SUPPORT, & TOOLING



ENORMOUS SELECTION OF SPARE PARTS & TOOLING



HUGE QUANTITY OF CAT 50, CAT 40, & HSK TOOLING



GREENERD STRAIGHTENING PRSSS



OTC 100-TON H-FRAME PRESS



LARGE QUANTITY OF VIDMAR CABINETS



SELCO BALER

TOOLROOM EQUIPMENT, SHOP SUPPORT, TOOLING, ETC:

GREENERD HCA-30-3 ORS 30-Ton Straightening Press SN SST5449; **OTC** "ROLL BED" 100-Ton H-Frame Press SN 405421; **SELCO** VS-HD Baler; Large Quantity of Vidmar Cabinets, Perishable Tools, CAT 50, CAT 40, and HSK Tool Holders, Tool Carts, Steel Cabinets, Assorted Die Cast Tooling, Molding Molds, Temperature Control Units, Dies & Die Carts, Pallet Jacks, Spare Parts, Robots, Air Compressors, Motors, Vacuum Pumps, Testing Equipment, Heavy Duty Racking & Shelving, & More!

****PAYMENT:** A buyer's premium of 18% will be charged to all purchases. ALL PURCHASES MUST BE PAID IN FULL UPON RECEIPT OF AN INVOICE. An electronic invoice will be sent to the successful bidder at the email address provided during registration, typically within 24 hours after the auction ends. Upon notification of being the successful bidder, Purchasers will have 48 hours to pay in full via wire transfer, certified check or company check. PLEASE NOTE, all company checks MUST be accompanied by a bank letter of guarantee made out to Prestige Equipment Corp. The full purchase price must be paid prior to the removal of any goods.

****RIGGING AND REMOVAL:** Rigging, removal and any duty fees are the sole responsibility of the Purchaser. Purchaser shall be responsible for the safe and proper removal of any assets purchased by Purchaser. Purchaser or its agents must remove all assets purchased before the final removal date and time specified by Prestige (the "Removal Date"). Any assets not removed on or prior to the Removal Date shall be subject to storage charges that Prestige may impose in its sole discretion. ANY ITEMS NOT REMOVED ON OR PRIOR TO THE REMOVAL DATE SHALL BE DEEMED ABANDONED AND PRESTIGE SHALL HAVE NO FURTHER OBLIGATION TO BUYER WITH RESPECT TO SUCH ITEMS.

****FOR MORE INFO:** Please contact Paul Lashin at +1-631-249-5566 or paul@prestigeequipment.com



SURPLUS TO ONGOING OPERATIONS OF MARELLI USA COMPLETE MACHINING & DIE CASTING FACILITY

BidSpotter THURSDAY, NOVEMBER 11TH, 2021 @ 10:00AM ET

INSPECTION: NOVEMBER 9TH & 10TH, 2021

Assets Located at: 2101 Nash Street, Sanford, North Carolina 27330

PRESTIGE EQUIPMENT AUCTIONS
35 Pinelawn Road, Suite 203W,
Melville, NY 11747
631-249-5566
auctions@prestigeequipment.com
www.prestigeequipment.com



HOLLAND INDUSTRIAL GROUP
13105 NW 42nd Ave
Opa-locka, FL 33054
305-638-5838
contact@hollandindustrialgroup.com
www.hollandindustrialgroup.com

www.prestigeequipment.com/auction/marelli