

# LIVE WEBCAST AUCTION



## MERIT GEAR

CNC Gear Manufacturing,  
Large Machining, & Heat Treat Facility

**OVER  
500 LOTS!**

**DATE: TUESDAY, JULY 13<sup>TH</sup>, 2021 @ 10:00AM CT**

**2009**



**118" GEAR CAPACITY**

**GLEASON 3000GMM SIGMA CNC GEAR INSPECTION MACHINE**



**27" GEAR CAPACITY**

**HOFLER HELIX 700 FORM STYLE CNC GEAR GRINDER**

**2013**



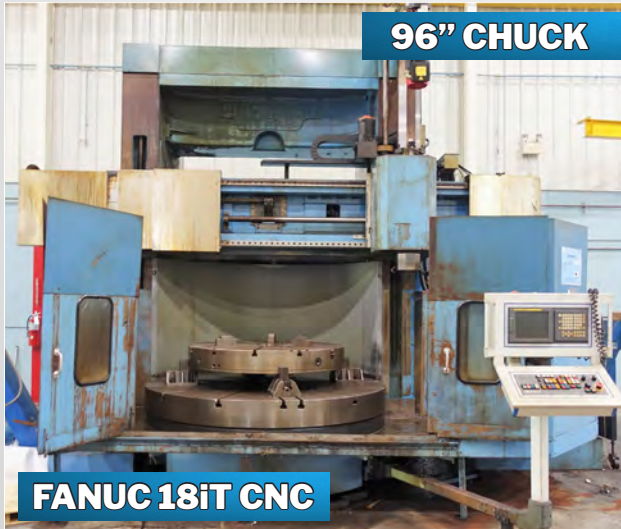
**SHEFFIELD ENDEAVOR III PLUS 12-30-10 CMM**

**1 OF 5**



**PACIFIC SCIENTIFIC AND SELAS FURNACES**

**96" CHUCK**



**FANUC 18iT CNC**

**96" NEW CENTURY VTC-96 CNC VERTICAL BORING MILL**

**2013**



**200-TON PHOENIX OGF-200 UPACTING HYDRAULIC PRESS**

**Inspection: July 12, 2021 - By Appointment Only • Assets Located at: 810 Hudson Street, Antigo, WI 54409**  
Additional Assets Located at: 2207 West Ave, Waukesha, WI 53189 & 3001 West Canal Street, Milwaukee, WI 53208

PRESTIGE EQUIPMENT AUCTIONS  
35 Pinelawn Road, Suite 203W,  
Melville, NY 11747  
631-249-5566  
auctions@prestigeequipment.com  
www.prestigeequipment.com



in  
conjunction  
with



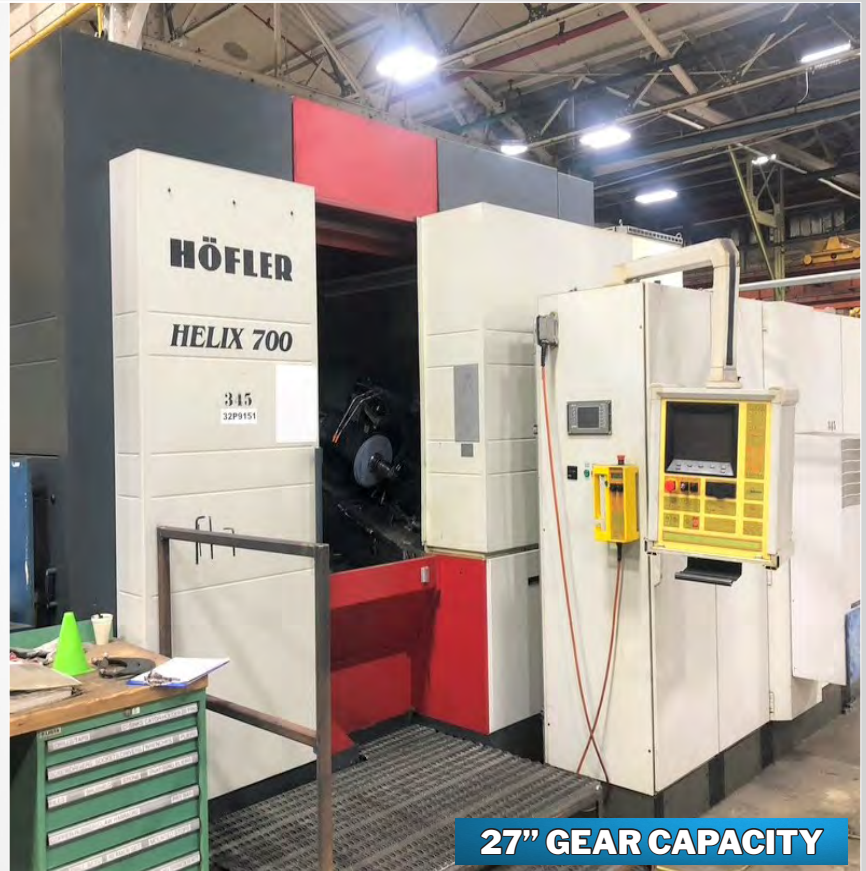
WISCONSIN METALWORKING  
MACHINERY, INC.  
2207 S West Ave, Waukesha, WI 53189  
262-548-6080  
sales@wismet.com  
www.wismet.com

REGISTER & BID ONLINE: [BidSpotter.com](http://BidSpotter.com)

# GEAR MACHINERY



**GLEASON 3000GMM SIGMA CNC GEAR INSPECTION MACHINE**



**HOFLER HELIX 700 FORM STYLE CNC GEAR GRINDER**

## GEAR MACHINERY:

**GLEASON 3000GMM SIGMA CNC GEAR INSPECTION MACHINE**, 118" Gear Dia., 39.4" Dia. Table, 78.74" Z-Axis, 4-ATC, with Kollmorgen CNC Control & Gamma 3.1.125 Software, SN 6790 [2009]

**HOFLER HELIX 700 FORM STYLE CNC GEAR GRINDER**, 27" Max. Gear Dia., 13.8" Axial Stroke Length, 45-Deg. Helix Angle, 4000 RPM, Hofler CNC Control, Paper Coolant/Filtration (3001 West Canal Street, Milwaukee)

**LIEBHERR LC-502 CNC GEAR HOBBER**, 19.7" Workpiece, 15.7" Table Dia., 7.87" Tangential, 15.7" Axial, 6.7" Cutter Dia., 9" Cutter Length, +/-50 Deg. Swivel, Tailstock, SN 02505 [1997]

**PFAUTER 1800MM VERTICAL GEAR HOBBER**, 18" Face, 54" Dia. T-Slotted Table, Tailstock, SN 20479



**LIEBHERR LC-502 CNC GEAR HOBBER**



**PFAUTER 1800MM VERTICAL GEAR HOBBER**

# GEAR MACHINERY



OVERTON FD-800 GEAR HOBBER



FELLOWS 4GS GEAR SHAPER



BARBER COLEMAN 16-16 HORIZONTAL GEAR HOBBER



FELLOWS 6A GEAR SHAPER

## GEAR MACHINERY:

(2) BARBER COLEMAN 16-16 HORIZONTAL GEAR HOBBER, SN 3595 & 3319

BARBER COLEMAN 14-15 HORIZONTAL GEAR HOBBER, with Change Gears, SN 783 (3001 West Canal Street, Milwaukee)

GLEASON 537 GEAR QUENCHING MACHINE, (3001 West Canal Street, Milwaukee)

OVERTON FD-800 GEAR HOBBER, 11-31" Gear O.D., 20" Gear Face, DP 3, Tailstock, SN 597

FELLOWS 6A GEAR SHAPER, SN 28133

FELLOWS 4GS GEAR SHAPER, SN 32461-261



BARBER COLEMAN HORIZONTAL GEAR HOBBER

# VERTICAL & HORIZONTAL BORING MILLS



**REBUILT &  
RETROFIT  
2009**

**394" TABLE!**



**96" TABLE**

**590" FRORIEP 4-AXIS DOUBLE COLUMN CNC VERTICAL BORING MILL**

**96" NEW CENTURY VTC-96 CNC VERTICAL BORING MILL**

## VERTICAL BORING MILLS:

**590" FRORIEP 4-AXIS DOUBLE COLUMN CNC VERTICAL BORING MILL**, 2-Rams, 78.74" Vertical Travel, 393.37" Table Dia., 590.55" Turning Dia., 196.85" Turning Height, 200-Ton Table Weight Cap., (4) Speed Ranges 0.13-13 RPM, Dual Pendant Operator Stations, Chip Conveyors, Table Extensions, 250 HP Table Motor, Siemens 840D CNC Control, [Rebuilt & CNC Retrofit 1999], (3001 West Canal Street, Milwaukee)

**96" NEW CENTURY VTC-96 CNC VERTICAL BORING MILL**, Fanuc 18iT CNC Control, 96" Table with 4-Jaw Face Plate, 104" Swing, 12-ATC, Chip Conveyor, SN 2719

**MAZAK MEGATURN A10-MC CNC VERTICAL TURNING CENTER**, Milling, SN 89747, 57" Swing, 2APC Pallet Shuttle, 39.37" Dia. Pallets, 5500 Lb. Pallet Capacity, 30 ATC, Cat 50 Taper, Live Milling, with Mazatrol T32-3 CNC Control, SN 89747

**108" CINCINNATI HYPRO VERTICAL BORING MILL**, 2 Swivel Rams, Side Head, 108" Table Diameter W/4-Face plate Jaws, 127" Swing, 84" Height Under Tool Holders, 54" Vertical Ram Travel, 72" Vertical Travel of Side Head, Table Speeds: .61-24 RPM, 40 HP, Pendant, (3001 West Canal Street, Milwaukee)

## HORIZONTAL BORING MILL:

**KURAKI KBT-1101P TABLE TYPE HORIZONTAL BORING MILL**, 4.3" Spindle Dia., X-84", Y-72", W-59", Z-31.5", 49" x 78" Table, 12-1200 RPM, #50 Taper, Sony 3-Axis DRO, 20 HP, SN 1239 (3645 West Elm Street, Milwaukee)



**108" CINCINNATI HYPRO VERTICAL BORING MILL**



**KURAKI KBT-1101P TABLE TYPE HORIZONTAL BORING MILL**



**2 APC & LIVE MILLING**

**MAZAK MEGATURN A10-MC CNC VERTICAL TURNING CENTER**

# CNC MACHINING CENTERS & CNC TURNING CENTERS



**6" SPINDLE DIAMETER**

**90" x 60" PALLETS**

**GIDDINGS & LEWIS 450 MC-60 CNC HORIZONTAL MACHINING CENTER**



**GIDDINGS & LEWIS 15VF TRAVELING COLUMN CNC VERTICAL MACHINING CENTER**



**MAZAK VQC-20/50B CNC VERTICAL MACHINING CENTER**



**MAZAK QT-35U CNC LATHE**



**18" CHUCK**

**MORI SEIKI SL-7B CNC LATHE**

## CNC MACHINING CENTERS:

**GIDDINGS & LEWIS 450 MC-60 CNC HORIZONTAL MACHINING CENTER**, 6" Spindle Dia., 204 ATC, Travels: X-120", Y-98", Z-48" (Spindle) W-98", (2) 60" x 72"

Pallets, (2) 60" x 96" Pallets, 12-2500 RPM, 50 HP, Probe, Software for CH

Facing Heads, Probe, CAT 50 Taper, Thru-Spindle Coolant, G & L 8000B CNC, S/N 450-289-93 (3001 West Canal Street, Milwaukee)

**GIDDINGS & LEWIS 15VF TRAVELING COLUMN CNC VERTICAL MACHINING CENTER**, 40 ATC, Travels: X (Column)-192", Y (Head)-72" Head, Z-20", #45 Taper, Floor Plates (May Be Sold Separately), G & L 8000 CNC Control, SN 986-0006-69 (3001 West Canal Street, Milwaukee)

**MAZAK VQC-20/50B CNC VERTICAL MACHINING CENTER**, (2) 48" x 21" Pallets, CAT 50 Taper, 24 ATC, SMW 4th Axis Rotary Table, 10" 3-Jaw Chuck & ACCU-SMART65 Control, with Mazatrol CAM M2 CNC, SN 63468

## CNC TURNING CENTERS:

**MORI SEIKI SL-7B CNC LATHE**, 36.4" Swing Over Bed, 22.8" Over Cross Slide, 60" Centers, 18" 3-Jaw Chuck, 12-Station Turret, 4" Hole, 1800 RPM, Tailstock, X-15.7", Z-61", Chip Conveyor, Fanuc 6T CNC, SN 174

**MAZAK QT-35U CNC LATHE**, 20" Swing Over Bed, 16" Swing Over Carriage, 12" 3-Jaw Chuck, 12-Station Turret, 2.5" Hole Thru Spindle, 3,000 RPM, Chip Conveyor, with Mazatrol CAM T-2 CNC, SN S0681

# HEAT TREAT DEPARTMENT



PACIFIC SCIENTIFIC MODEL PKM-100-2-GRT CUSTOM GAS FIRED QUENCH FURNACE



SELAS KARBO-MATIC PKMD-100-ERTNM-S GAS-FIRED QUENCH FURNACE



PACIFIC SCIENTIFIC (SELAS) GAS FIRED BOX DRAW FURNACE



PACIFIC SCIENTIFIC KARBO-MATIC PKM-120-GRT GAS FIRED OIL QUENCH FURNACE



TRENT 1400 DEG. ELECTRIC OVEN



SELAS ELECTRIC FIRED BOX DRAW FURNACE

## HEAT TREAT DEPARTMENT:

- SELAS ELECTRIC FIRED BOX DRAW FURNACE, Model PKMD-100E, 30"W x 48"L x 24"H, 1450 Deg., #662-0619
- PACIFIC SCIENTIFIC (SELAS) GAS FIRED BOX DRAW FURNACE, Model PKMD-120-G, 30"W x 48"L x 30"H, 1450 deg., #662-0619, SN 662-0388
- PACIFIC SCIENTIFIC MODEL PKM-100-2-GRT CUSTOM GAS FIRED QUENCH FURNACE, 2-Zones, 1900 Deg., #661-2919, 30"W x 48"L, 24" H Work area, Nitrogen, Methanol, 30" W Pass Through, SN 661-2919
- PACIFIC SCIENTIFIC KARBO-MATIC PKM-120-GRT GAS FIRED OIL QUENCH FURNACE, 1900 Deg. F, 30"W x 48"L x 30"H Work Size, Straight Through Design, Nitrogen, Methanol, 30" W Pass Through, SN 662-0387
- PACIFIC SCIENTIFIC PP-LTC-120-F HEAT TREAT OVEN, SN 662-0389
- PACIFIC SCIENTIFIC (SELAS) ELECTRIC BATCH WASHER, Model PW-100-E, 30"W x 48"L x 24"H Work Area, 180 Deg., #662-0620
- PACIFIC SCIENTIFIC TRANSFER CART, Model PPLTC-120-f, 30"W x 48"D, SN 662-0389
- SELAS KARBO-MATIC PKMD-100-ERTNM-S GAS-FIRED QUENCH FURNACE 30"W x 48" L x 24" H Work size, 2100 Deg. F., with Wash/Rinse, Nitrogen, Methanol, 30" W Pass Through, SN 662-0618
- LINDBERG ELECTRIC BOX DRAW FURNACE, Model 13-ECE-304830-14, 30"W x 48"L x 30"H, 1400 Deg., SN 24828
- TRENT 1400 DEG. ELECTRIC OVEN, 42" x 42" x 42" Work Area, 39" x 27" Tray, SN 900-414
- MERK BOX TYPE GAS DRAW FURNACE, 46" x 46" x 66" Door, 1200 Deg. Lightweight Fiber Interior, 600-1175 Deg.
- MERK BOX TYPE GAS DRAW FURNACE, 46" x 46" x 66" door, 1200 deg. Light Weight Fiber Interior
- DESPATCH MODEL V29 CABINET OVEN, 37"W x 25"L x 37"H Work Area, 500 Deg., Digital Control, SN 41288
- DESPATCH MODEL WB25 OVEN, 34"W x 48"L x 30"H, 36" Door, SN 081547
- DESPATCH MODEL V265 CABINET OVEN, SN 118356



DESPATCH MODEL WB25 OVEN



MERK BOX TYPE GAS DRAW FURNACE



LINDBERG ELECTRIC BOX DRAW FURNACE

# INSPECTION - LAB - FINISHING - PART WASHING

2013



SHEFFIELD ENDEAVOR III PLUS 12-30-10 CMM



WHEELABRATOR ROTARY TABLE BLASTER & TORIT DFO 2-8 DUST COLLECTOR



PROCECO 62000 GAS FIRED PARTS WASHER



MARCI BLAST CABINET

## PART WASHERS:

PROCECO 62000 GAS FIRED PARTS WASHER, Typhoon 60-48-G-2000, SN 89-206  
PROCECO 42" TABLE TYPE WASHER, Model HD42-48-E-2500-1-SC, 2500 Lb. Load, 42" Table, 48" Part Height, Electric, Conveyor, SN 96-238  
(2) JRI CABINET PARTS WASHER, SN 89-206  
NOBLES PARTS WASHER WITH ROTARY TABLE  
BETTER ENGINEERING PARTS #7 IMPULSE WASHER

## INSPECTION & LAB EQUIPMENT:

2013 SHEFFIELD ENDEAVOR III PLUS 12-30-10 CMM, X-118", Y-40", Z-47", SN 0613-6607UA 2013, w/2018 PC-Dimis Software  
LECO LM-700AT HARDNESS TESTER, SN FM7693  
GEIT MIC 10 UCI PORTABLE HARDNESS TESTER  
MITUTOYO SURFACE ROUGHNESS MEASURING SYSTEM  
BRINELL MICRO HARDNESS TESTER UK 300H 97970

## BLASTING/FINISHING DEPARTMENT:

WHEELABRATOR ROTARY TABLE BLASTER & TORIT DFO 2-8 DUST COLLECTOR, SN 662-0388  
MARCI BLAST CABINET  
TRINCO BLAST CABINET  
14' X 15' PAINT BOOTH



JRI CABINET PARTS WASHER

# MILLS & DRILLS - GRINDERS - TOOLROOM EQUIPMENT

## MILLS & DRILLS:

**MAS VOM-50 UNIVERSAL RADIAL DRILL**, 52" Column Travel, 360 Arm and Drilling Head Rotation, 90 Degree Head Horizontal/Vertical Swivel, 5.3 HP, 1991  
**KEARNEY & TRECKER 2K UNIVERSAL MILL**  
**GORTON 1-22 VERTICAL MILL**  
**WESTBURY 80-2743 VERTICAL MILL**  
**LAGUN FTV-2S VERTICAL MILL**, Vari Speed Head, 50" x 10" Table, X-Axis Power Feed, Hartford Manual Indexer, Chuck  
**LAMINA-DRILL PORTABLE DRILL**, Drill Head, SN P1270  
**ANCHOR LAMINA PORTABLE DRILL**, Magnetic Base Drill Head, SN 372410.01  
**LAMINA HYDRADRILL PORTABLE DRILL**, Drill Head, SN P-407  
**CINCINNATI ROYAL MANUAL DRILL PRESS**  
**SOLBERGA SE725 Geared Head Drill**, 60-1440 RPM, Vise, Power Feed, 7" Stroke, 1.8 HP

## GRINDERS:

**ARTER MODEL B-24 ROTARY SURFACE GRINDER**, Dresser, 24" Mag. Chuck, SN 56-3581  
**6" X 18" OKAMOTO 6-18DX HORIZONTAL SURFACE GRINDER**  
**AUTOMATIC SURFACE GRINDER**, Walker Magnetic Chuck, Incremental Downfeed  
**12" ELB ROTARY GRINDER**, 12" Diameter Magnet, Demagnetizer (3301 West Canal Street, Milwaukee)  
**SETCO DUAL HEAD GRINDER**, Model SPL, Type 502-205-8, #95356, 5 HP, 12" & 14" wheels  
**OLIVER DRILL POINT GRINDER**  
**ROYAL OAK GRINDER**, Motorized Vari Speed Head, SN 8436  
**HAMMOND CB-77B**, Double End Diamond Grinder, SN 7311  
**EXCELLO DOUBLE END SLAG GRINDER**, with Tables, 14" Wheels  
**CINCINNATI NO. 2 TOOL & CUTTER GRINDER**, Model D, #1D2F5YF12  
**12" DUAL WHEEL 2 HP Pedestal Grinder**



MAS VOM-50 UNIVERSAL RADIAL DRILL



ARTER MODEL B-24 ROTARY SURFACE GRINDER



64" 4-JAW CHUCK



FUTURMILL PLANER MILL MILLING HEAD



TOS RIGHT ANGLE MILLING HEAD



6" X 18" OKAMOTO 6-18DX AUTOMATIC SURFACE GRINDER

## MISCELLANEOUS MACHINE SHOP & TOOLROOM EQUIPMENT:

**2012 RUSCH MACHINE & DESIGN (RMD) MODEL M174 TUBE BENDER**, SN 37899255 [2012]  
**MITTS & MERRILL 3A MECHANICAL KEY SEATER**, #E13929-11-51  
**24" X 48" SPRINGFIELD ENGINE LATHE**  
**ELECTRO-ARC TAPPER**  
**64" 4-JAW CHUCK**  
**72" LUCAS ROTARY TABLE**, SN 48PWQ211  
**PACIFIC SCIENTIFIC RXGENERATOR**, Size S-3-AP, 3600 CFH Capacity, 1950 Deg. Max., Air Cooled, SN C-8049-2 B (3301 West Canal Street, Milwaukee)  
**TOS RIGHT ANGLE MILLING HEAD**, #50 Taper, From TOS H100A Horizontal Boring Mill  
**FUTURMILL DT-8-18-30 30 HP PLANER MILL MILLING HEAD**, #50 Taper, 900 RPM



# PRESSES - SAWS - WELDING EQUIPMENT



**200-TON CAPACITY**

**200-TON PHOENIX OGF-200 UPACTING HYDRAULIC PRESS**



**150-TON CAPACITY**

**150-TON HANNIFIN S-1 50-1 2-4-2-90 HYDRAULIC STRAIGHTENING PRESS**



**MARVEL 15A4 BAND SAW**

## **PRESSES:**

**200-TON PHOENIX OGF-200 UPACTING HYDRAULIC PRESS, 32" x 36" Top Ram, 36" x 36" Bed, SN 30133**

**150-TON HANNIFIN S-1 50-1 2-4-2-90 HYDRAULIC STRAIGHTENING PRESS, SN A42216**

**30-TON LUCAS POWER PRESS, #30-35-28, 48" Bed to Ram, 29" Between Columns**

## **SAWS:**

**MARVEL 15A4 BAND SAW, TABLE FEED, SN D15773**

**12" KALAMAZOO SAW**

**DO ALL MODEL ML VERTICAL BAND SAW, Welder  
EVERETT MODEL 10 MANUAL ABRASIVE SAW**

## **WELDING EQUIPMENT:**

- (9) MILLER DELTAWELD 651 WELDERS**
- (3) MILLER DELTAWELD 651 WELDERS**
- (4) MILLER DELTAWELD 451 WELDERS**
- (1) MILLER DELTAWELD 450 WELDER**
- MILLER GOLDSTATE 652 WELDER**
- MILLER DELTAWELD 452 WELDER**
- MILLER MILLERMATIC 212 WELDER**
- LINCOLN IDEALARC DC- 1000 WELDER**
- ACORN 5' X 6' WELDING TABLE, Stand (3301 West Canal Street, Milwaukee)**
- WORTHINGTON NONTILTING MOTORIZED WELDING POSITIONER, 53" x 53" Table**



**OVER 20 ASSORTED WELDERS**

# AIR COMPRESSORS, STORAGE TANK, SHOP SUPPORT & MORE



KAESER FS440 AIR COMPRESSOR



GARDNER DENVER AIR COMPRESSOR



GARDNER DENVER AIR COMPRESSOR



SCIENTEMP 120 DEG CHEST FREEZER



WEBBER AT94-120 INDUSTRIAL FREEZER



KENNEDY / UNDERWRITING LABORATORIES ABOVE GROUND FLAMMABLE LIQUID STORAGE

## AIR COMPRESSORS:

KAESER FS440, 335 HP, 125 PSI, 2000, wired 440 volts, [2000] (4695 West Greenfield Ave, Milwaukee)

GARDNER DENVER 75 HP ELECTRA SAVER II ROTARY SCREW TYPE AIR COMPRESSOR

GARDNER DENVER 40 HP ELECTRA-SAVER II ROTARY SCREW TYPE AIR COMPRESSOR

GARDNER DENVER VS110 AIR COMPRESSOR, SN S294324

GARDNER DENVER 750A4 AIR DRYER

SULLAIR LS20-100SL/A/SUL, SN 003-123964

INGERSOLL RAND SSR-UP6-30-125, Rotary Screw Type, SN PXO472U02210

## OVERHEAD BRIDGE CRANE:

10-TON CUSTOM STEEL OVERHEAD BRIDGE CRANE, 25'/23' Span, 40' Runway, Single Girder, Sidehung

## STORAGE TANK:

2018 KENNEDY / UNDERWRITING LABORATORIES ABOVE GROUND FLAMMABLE LIQUID STORAGE TANK, 10,363 Gallon Capacity, SN A61055

## MISCELLANEOUS SHOP SUPPORT, ETC:

KARDEX INDUSTRIEVER 8000 VERTICAL TOOL STORAGE UNIT

CAT MAGNUM FLOOR SCRUBBER

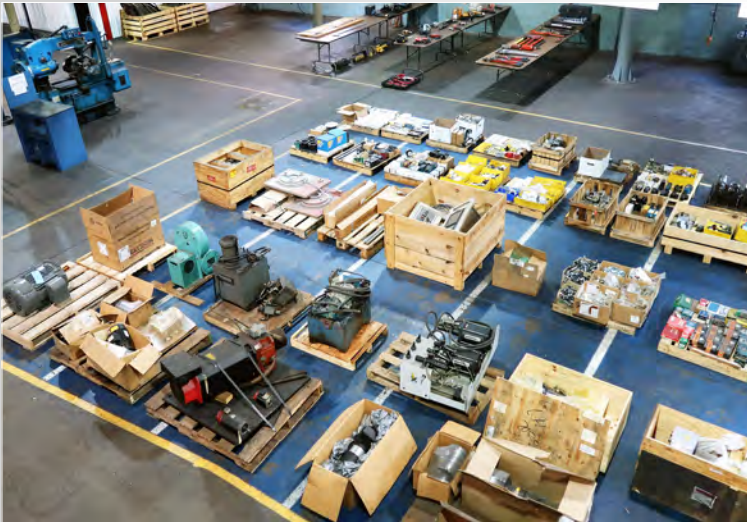
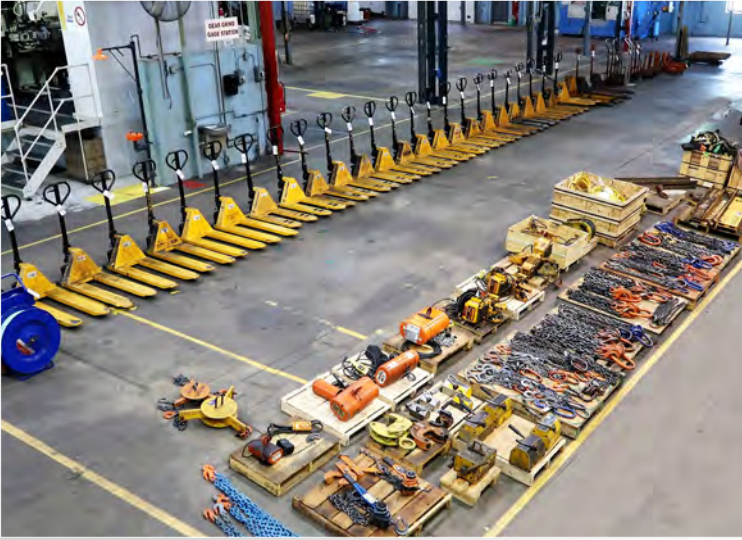
800 GALLON SURGE TANK

WEBBER AT94-120 INDUSTRIAL FREEZER

SCIENTEMP 120 DEG CHEST FREEZER

PORTABLE OFFICE, Exterior/Interior, Aluminum, Dimensions 7'9" x 7'9" x 15'6", Dual Sliding Doors, Set-Up for Power & Lights

# PLANT SUPPORT, TOOLING & MORE!



**\*\*PAYMENT:** A buyer's premium of 18% will be charged to all purchases. ALL PURCHASES MUST BE PAID IN FULL UPON RECEIPT OF AN INVOICE. An electronic invoice will be sent to the successful bidder at the email address provided during registration, typically within 24 hours after the auction ends. Upon notification of being the successful bidder, Purchasers will have 48 hours to pay in full via wire transfer, certified check or company check. PLEASE NOTE, all company checks MUST be accompanied by a bank letter of guarantee made out to Prestige Equipment Corp. The full purchase price must be paid prior to the removal of any goods.

**\*\*RIGGING AND REMOVAL:** Rigging, removal and any duty fees are the sole responsibility of the Purchaser. Purchaser shall be responsible for the safe and proper removal of any assets purchased by Purchaser. Purchaser or its agents must remove all assets purchased before the final removal date and time specified by Prestige (the "Removal Date"). Any assets not removed on or prior to the Removal Date shall be subject to storage charges that Prestige may impose in its sole discretion. ANY ITEMS NOT REMOVED ON OR PRIOR TO THE REMOVAL DATE SHALL BE DEEMED ABANDONED AND PRESTIGE SHALL HAVE NO FURTHER OBLIGATION TO BUYER WITH RESPECT TO SUCH ITEMS.

**\*\*FOR MORE INFO:** Please contact Paul Lashin at +1-631-249-5566 or paul@prestigeequipment.com

## MERIT GEAR - CNC Gear Manufacturing, Large Machining, & Heat Treat Facility

**DATE: TUESDAY, JULY 13<sup>TH</sup>, 2021 @ 10:00AM CT**

**Inspection: July 12, 2021 - By Appointment Only Assets Located at: 810 Hudson Street, Antigo, WI 54409**

**Additional Assets Located at: 2207 West Ave, Waukesha, WI 53189 & 3001 West Canal Street, Milwaukee, WI 53208**

PRESTIGE EQUIPMENT AUCTIONS  
35 Pinelawn Road, Suite 203W,  
Melville, NY 11747  
631-249-5566  
auctions@prestigeequipment.com  
www.prestigeequipment.com



in  
conjunction  
with



WISCONSIN METALWORKING  
MACHINERY, INC.  
2207 S West Ave, Waukesha, WI 53189  
262-548-6080  
sales@wismet.com  
www.wismet.com

REGISTER & BID ONLINE: [BidSpotter.com](https://www.bidspotter.com)