

ONLINE AUCTION

SURPLUS TO
THE ONGOING
OPERATIONS OF



STEEL FABRICATION & FINISHING EQUIPMENT

FEATURING: Press Brakes, Shear, Plasma Table, Ironworker, Band Saws, Robotic Weld Cell, Welders, Paint & Blast Booths, Overhead Bridge Cranes, Jib Cranes, Forklifts, Manlifts, Pickup Truck, Utility Vehicles, Compressors, Plant Support & More



2010

RETRO SYSTEMS HORNET CNC PLASMA CUTTER



6' X 3/8" CAP.

LEMAS 4-TR 200/6 4-ROLL PLATE BENDING ROLL

SALE CLOSING FROM
Tuesday, March 30
at 10:00 AM CT

SALE LOCATION
5420 IN-8,
Knox, Indiana 46534

INSPECTION
Monday, March 29
from 9:00 AM to 4:00 PM CT

**Pre-Auction Offers
Invited on
Major Assets**

COMPLETE CATALOG & INFORMATION: <https://perfection.global/supersteel>



**PERFECTION
Industrial Sales**

ph +1-847-545-6374 • fax +1-847-427-8884

www.perfectionindustrial.com

Perfection Industrial Sales, IN Firm Lic.# AC31400046
Joseph Lundvick, IN Auctioneer Lic.# AU11400048

Sale is Being Held in Conjunction With:



ph +1-631-249-5566

www.prestigeequipment.com

Bidding Available Through

BidSpotter.com

CNC PLASMA CUTTER, FABRICATING MACHINERY, FORKLIFTS, BOOM & SCISSOR LIFTS



CNC BACKGAUGE

CINCINNATI 350 CB X 10 CNC HYDRAULIC PRESS BRAKE

CNC PLASMA CUTTER

2010 RETRO SYSTEMS HORNET HD HHDTR150 CNC PLASMA CUTTER, s/n 2266, w/12' x 5' Dowlraft Table, HYPER THERM HPR 260XD Plasma Source, Dual Side Drive, INTERCEPT Dust Collector

FABRICATING MACHINERY

CINCINNATI 350 CB X 10 350-TON CNC HYDRAULIC PRESS BRAKE, s/n 49097, w/AUTOBEND 7 CNC Control and Backgauge, 12' OA, 10" Stroke

LEMAS 4-TR 200/6 4-ROLL BENDING ROLL, s/n 319927, w/6' x 3/8" Cap., 7.87" Dia. Rolls

CINCINNATI 250 10' X 1/4" HYDRAULIC SQUARING SHEAR, s/n 45415, w/Front Operating Power Back Gauge, 80" Squaring Arm

PEDDINGHAUS PEDDIMAX 66/110 66-TON HYDRAULIC IRONWORKER, s/n 44228443196004

HYD-MECH S-20 III HORIZONTAL BANDSAW, s/n 6C0112199, w/13" x 18" Capacity, Infeed and Outfeed Roller Conveyor

RPT/ROBOTIC PRODUCTION TECHNOLOGY ROBOTIC WELDING SYSTEM, s/n 2160, w/FANUC M-710 I Robot and RJ-3 Control, 2-Position Welding Fixture and Enclosure

ALSO: LINCOLN AND ESAB MIG, TIG AND ARC WELDERS, PLASMA CUTTER, WELDING CURTAINS, WELDING TABLES, WELDING SUPPLIES AND CONSUMABLES



HYD-MECH S-20 III HORIZONTAL BANDSAW



GENIE BOOM Z-30/20HD ARTICULATING BOOM LIFT



8,850 LB CAP.

CATERPILLAR P10000 LP FORKLIFT



8,250 LB CAP.

TAILIFT FD50 DIESEL FORKLIFT



10' X 1/4" CAP.

CINCINNATI 250 HYDRAULIC SHEAR



PEDDINGHAUS PEDDIMAX 66/110 HYDRAULIC IRONWORKER



SKYJACK SJIII-3220 SCISSOR LIFT



GROUP OF (5) FORKLIFTS

FORKLIFTS, BOOM & SCISSOR LIFTS

CATERPILLAR P10000 8,850 LB LPG FORKLIFT, s/n AT29D80210, w/Side Shift

TAILIFT FD50 8,250 LB DIESEL FORKLIFT, s/n TA06739, w/3-Stage Mast, Side Shift

HYSTER H80XL 8,000 LB LPG FORKLIFT, s/n G005D08608T, w/Side Shift

(2) NISSAN 50 LP 5,000 LB LPG FORKLIFTS, s/n AP1F2-9U0034 and CPL02-9P4984, w/3-Stage Mast, Side Shift

CATERPILLAR 5,000 LB DIESEL FORKLIFT, s/n NA, w/3-Stage Mast

(2) CATERPILLAR GP40KL 8,000 LB LPG FORKLIFTS, s/n AT29C60343, AT29C60344, w/ide Shift (Requires Repair)

CATERPILLAR GC45K-SWB 9,000 LB LPG FORKLIFT, s/n AT8702022, w/3-Stage Mast, Side Shift, No Forks (Requires Repair)

GENIE Z30-20HD ARTICULATING BOOM LIFT, s/n 3086-787, w/500 lb Max. Load, 31' Max. Height

SKYJACK SJIII-3220 SCISSOR LIFT, s/n NA, w/20' Max. Platform Height, 26' Work Height, Deck Extension

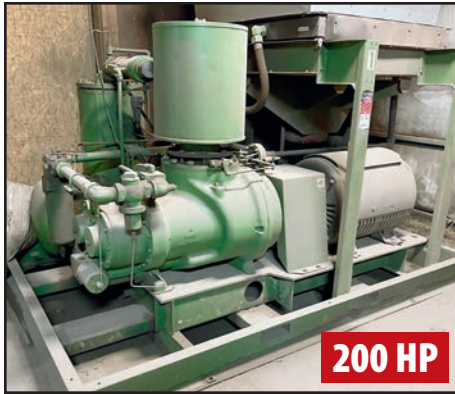
ECONOMY SPL-2660 SCISSOR LIFT, s/n EH 69553, w/6' Max. Lift Height, (No Joystick Control, Condition Unknown)

SALE CLOSING FROM Tuesday, March 30 at 10:00 AM CT

INSPECTION Monday, March 29 from 9:00 AM to 4:00 PM CT

View our current auction schedule at www.perfectionindustrial.com

AIR COMPRESSORS & DRYERS, BRIDGE CRANES, VEHICLES



SULLAIR 25-200H ROTARY SCREW AIR COMPRESSOR



SULLAIR ST509RD AIR COMPRESSOR SYSTEM

AIR COMPRESSORS & DRYERS

SULLAIR 25-200H 200 HP ROTARY SCREW AIR COMPRESSOR, s/n 003-84347

SULLAIR LS-25 200H ACAC 200 HP ROTARY SCREW AIR COMPRESSOR, s/n 003-100770

SULLAIR 20-125H 125 HP ROTARY SCREW AIR COMPRESSOR, s/n 003-57377

2011 SULLAIR ST509RD 20 HP AIR COMPRESSOR SYSTEM, s/n 201111080074, w/125 PSIG, SULLAIR RN100 Refrigerated Air Dryer, Tank Mounted

2012 COMPAIR L22 L-SERIES 30 HP AIR STATION COMPRESSOR SYSTEM, s/n D102821, w/COMPAIR CNC150A1 Refrigerated Air Dryer, Tank Mounted

SULLAIR S-ENERGY 3009PB AC 40 HP AIR COMPRESSOR, s/n 20180327008

SULLAIR RD-2000 REFRIGERATED AIR DRYER, s/n 2211SA0653

SULLAIR SRL-200 REFRIGERATED AIR DRYER, s/n 3941310001

SULLAIR SRD-1000 AC REFRIGERATED AIR DRYER, s/n 003-D10831



2012
COMPAIR L22 L-SERIES AIR STATION COMPRESSOR SYSTEM



SULLAIR S-ENERGY 3009PB AC AIR COMPRESSOR



SULLAIR RD-2000 REFRIGERATED AIR DRYER

BRIDGE CRANES

(2) CRANE AMERICA 5-TON BRIDGE CRANES, w/(2) CM Lodestar XL 5-ton Electric Hoists, Radio Control, Approx. 34' Bridge

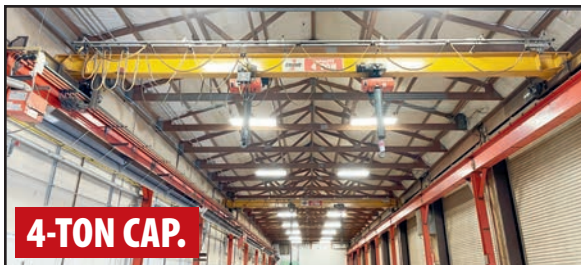
(2) CRANE AMERICA 4-TON BRIDGE CRANES, w/(2) CM Lodestar 2-ton Electric Hoists, Radio Control, Approx. 34' Bridge



5-TON CAP.
CRANE AMERICA 5-TON BRIDGE CRANES



CHEVROLET 2500 PICKUP TRUCK



4-TON CAP.
CRANE AMERICA 4-TON BRIDGE CRANES



JOHN DEERE 855D GATOR XUV DIESEL UTILITY VEHICLE

VEHICLES

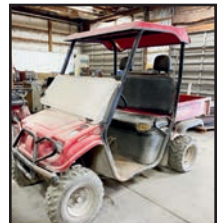
CHEVROLET 2500 4X4 PICKUP TRUCK, w/BLIZZARD Snow Plow, 183,638 Miles at Time of Printing, Requires Battery and Fuel Pump

(2) JOHN DEERE 855D GATOR XUV DIESEL UTILITY VEHICLES, s/n MOHX0PA114997, MOHX0PA121361, w/Power Dump

ALSO: CUSTOM BLAST AND PAINT ROOMS, JIB CRANE, UTILITY VEHICLES, VACUUM LIFTERS, VACUUM PUMPS, AIR TANKS, DRILL PRESSES, CHILLERS, TRANSFORMERS, BAND SAWS, AIR CIRCULATORS, SHOP CARTS, PEDESTAL FANS, OFFICE EQUIPMENT, AND MORE



JOHN DEERE 855D GATOR XUV DIESEL UTILITY VEHICLE



BRISTER'S/HONDA CW11/TW11 TRAIL WAGON

To discuss your requirements for an auction, please call
Perfection Industrial +1-847-545-6374

PAYMENT

A 20% buyer's premium will be charged on all assets. The buyer's premium will be reduced to 18% for payments made by means of cashier's check or wire transfer within 48 hours of sale close. If paying by company check, a paid in full invoice will be issued upon the check clearing. Credit card payments are limited to a maximum of \$2,000. There is no reduction of the buyer's premium for buyers paying with a credit card. All items are sold "As is, Where is" without any warranty, express or implied.

REMOVAL

All items must be removed no later than Friday, April 9. All removal is strictly on an appointment only basis. Anyone removing purchased items with a lift truck or another powered vehicle must have a certificate of insurance with a \$2M General Liability policy, the policy must include a Worker's Compensation rider, and that certificate of insurance must be provided to the auctioneer for review and approval prior to the auction.

FOR FURTHER INFORMATION: Please contact Jennifer Reiner at +1-847-545-6374 or jennifer@perfectionindustrial.com

SALE CLOSING FROM

Tuesday, March 30 at 10:00 AM CT

SALE LOCATION

5420 IN-8, Knox, Indiana 46534

INSPECTION

Monday, March 29
from 9:00 AM to 4:00 PM CT

Complete Catalog & Information Available at <https://perfection.global/supersteel>