

PUBLIC AUCTION

**CORPORATE
ASSETS INC**

Assets of
WÄRTSILÄ CANADA INDUSTRIAL REPAIR




WÄRTSILÄ

**Tuesday, September 10, 2019
9:00 A.M. PDT**

**MARK YOUR
CALENDARS!**

**1771 Savage Road
Richmond, BC, V6V 1R1**

**INSPECTION: Monday, September 9 from 9:00 A.M.
to 5:00 P.M. & morning of auction to start of auction.**

ONSITE & ONLINE 

LARGE CAPACITY CNC TURNING & BORING FACILITY



AUCTION CONDUCTED BY:

CORPORATE ASSETS INC

“Let Our Experience Be Your #1 Asset”™

373 Munster Avenue, Toronto, ON, Canada M8Z 3C8

www.corpassets.com • 416.962.9600 • info@corpassets.com

LATE MODEL CNC VERTICAL & HORIZONTAL BORING MILLS AVAILABLE

2007



4.3" SPINDLE

FEMCO BMC-110R2 CNC horizontal table type boring mill

2015



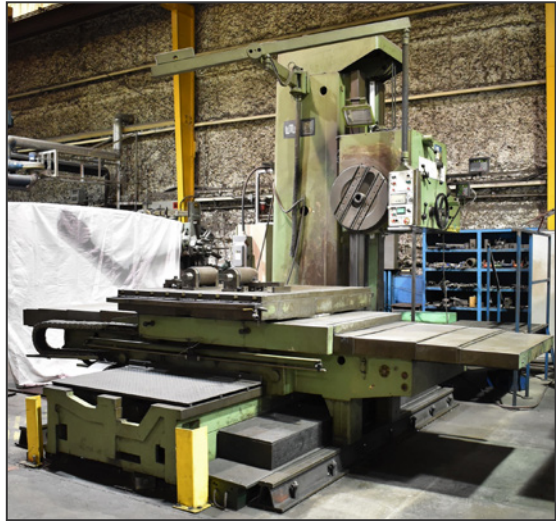
78" SWING

O-M OM-16TX CNC vertical boring mill



70.5" SWING

TOSHIBA TUE-15 CNC vertical boring mill



UNION HECKERT BFT-110/5 5" table type horizontal boring mill

TABLE TYPE HORIZONTAL BORING MILLS

FEMCO (2007) BMC-110R2 CNC horizontal table type boring mill with FANUC SERIES 21i-MB CNC control, 4.3" spindle diameter, 63"x56.5" power rotary table, travels: X - 78", Y - 70", Z - 67", CAT 50 spindle taper, speeds to 2000 RPM, 24 HP spindle motor, 60 station ATC, 13,800 lb. table capacity, coolant, chip conveyor, vertical milling head, 151 hours run time (recorded at time of listing), s/n: B770270

UNION HECKERT BFT-110/5 5" table type horizontal boring mill with UNION control, (2) NEWALL DP700 DROs, 4.3" spindle diameter, 55"x63" table, travels: X - 78", Y - 49", Z - 31.5", speeds to 1120 RPM, facing head, s/n: 10898

CNC VERTICAL BORING MILLS

O-M (2015) OM-16TX CNC vertical boring mill with FANUC SERIES Oi-TD CNC control, 63" diameter table, 78" swing, 78" max. turning diameter, 59" max. turning height, 17, 500 lb. max. work piece weight, travels: X - 59", Z - 49", 12 station ATC, 73 HP main drive, coolant, chip conveyor, 1023 hours run time (recorded at time of listing), s/n: MT-2068

TOSHIBA TUE-15 CNC vertical boring mill with FANUC SERIES 18-T CNC control, 59" diameter table with (4) face plate type jaws, 70.5" swing, 59" max. turning height, 17,600 lb. max. work piece weight, travels: X - 47", Z - 35", 12 station ATC, 40 HP main drive, coolant, chip conveyor, s/n: 44051

THIS BROCHURE IS ONLY A PARTIAL LISTING. PLEASE VISIT OUR WEBSITE



HYDRAULIC STEADY REST

DOOSAN PUMA 4100LB CNC turning center



NILES twin ram vertical boring mill



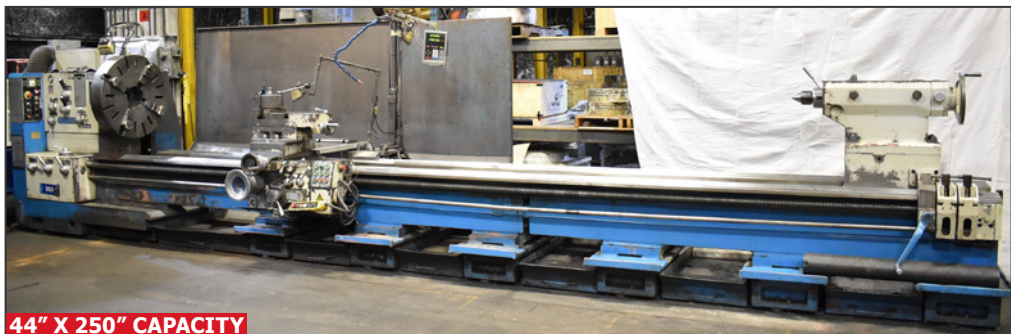
59" X 79" TABLE

KAO-MING KMC-2000SD CNC bridge type vertical machining center



30" X 165" CAPACITY

TOS SN 7105 engine lathe



44" X 250" CAPACITY

POREBA TPK 110X6 gap bed engine lathe

CNC TURNING CENTER

DOOSAN (2015) PUMA 4100LB CNC turning center with DOOSAN-FANUC i SERIES CNC control, 18" 3 jaw chuck, 31" swing over bed, 21.5" max. turning diameter, 41" max. turning length, 5" spindle bore, 12 station turret, speeds to 2000 RPM, 46 HP spindle motor, hydraulic steady rest, tailstock, coolant, chip conveyor, tool check arm, 520 hours run time (recorded at time of listing), s/n: ML0280-000029

VERTICAL BORING MILL

NILES twin ram vertical boring mill with 99" diameter table, approx. 96" swing, approx. 72" max. height under rail, (2) rail heads, s/n: 15153

CNC BRIDGE TYPE VERTICAL MACHINING CENTER

KAO-MING (2000) KMC-2000SD CNC bridge type vertical machining center with FANUC SERIES 18-M CNC control, 59"x79" table, travels: X - 87", Y - 55", Z - 27.5", CAT 50 spindle taper, 60 station ATC, speeds to 6000 RPM, 20 HP motor, coolant, chip conveyor, s/n: 20141



BULLARD vertical turret lathe



WEBSTER-BENNETT vertical turret lathe



MAZAK gap bed engine



HYD-MECH S-20 SERIES II horizontal band saw



CINCINNATI 16X72 universal cylindrical grinder



DANOBAT RE-1200A cylindrical grinder

CONTACT 416.962.9600 TO CONSIGN EQUIPMENT AT AN UPCOMING AUCTION

COMPLETE BABBITTING & MACHINING DEPARTMENTS AVAILABLE

2010



FORT WORTH G450B universal milling machine



FIRST LC-20VHS universal milling machine



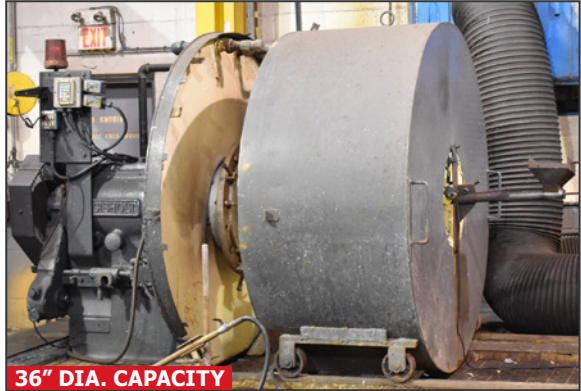
TOOLING AVAILABLE

SUNNEN MBB 1600 precision honing machine



72" DIA. CAPACITY

GISHOLT centrifugal casting machine for babbitting



36" DIA. CAPACITY

View of centrifugal casting machine for babbitting



16,000 LBS CAPACITY

CLARK C500Y160 LPG outdoor forklift

MACHINE SHOP EQUIPMENT

WEBSTER-BENNETT vertical turret lathe with 48" diameter table, 49" swing, 48" max. turning height, 40 HP, speeds to 100 RPM, 5 station turret, NEWALL DPG 2 axis DRO, s/n: n/a

BULLARD vertical turret lathe with 36" diameter table, 38" swing, 20 HP, 5 station turret, s/n: n/a

MAZAK gap bed engine lathe with 20" swing over bed, 126" between centers, 4" spindle bore, speeds to 1500 RPM, inch/metric threading, 16" 3 jaw chuck, steady rests, coolant, NEWALL TOPAZ DRO, s/n: n/a

COLCHESTER 600 engine lathe with 22" swing over bed, 85" between centers, 4" spindle bore, speeds to 1400 RPM, inch/metric threading, 12" 3 jaw chuck, s/n: n/a

CINCINNATI 16X72 universal cylindrical grinder w/ 16" swing over table, 72" between centers, speeds to 1140 RPM, 5 HP, 14" wheel diameter, s/n: n/a

TO SCHEDULE AN AUCTION CONTACT 416.962.9600

FABRICATING & HEAT TREATING EQUIPMENT AVAILABLE



Partial view of subarc welding system with welding positioners



WARTSILA track mounted welding system



Partial view of **TAFTA** metalizing spray equipment available



Partial view of welders available

2000° F. MAX TEMP.



CANFCO car bottom natural gas fired heat treat furnace



NICHOLSON IND 4X4X4 electric batch oven

THIS BROCHURE IS ONLY A PARTIAL LISTING. PLEASE VISIT OUR WEBSITE

MACHINE SHOP

POREBA TPK 110X6 gap bed engine lathe with 44" swing over bed, 250" between centers, 4" spindle bore, speeds to 710 RPM, inch/metric threading, 31" 4 jaw chuck, steady rests, coolant, NEWALL DRO, taper attachment, s/n: 7402-02-13026-03

TOS SN 7105 engine lathe with 30" swing over bed, 165" between centers, 4" spindle bore, speeds to 1600 RPM, inch/metric threading, 16" 3 jaw chuck, steady rests, coolant, NEWALL DP700 DRO, taper attachment, s/n: 400-500-630-710

FIRST LC-20VHS universal milling machine with 56"x10" table, speeds to 4500 RPM, 6 HP, 6" machine vise, MITUTOYO KA COUNTER 2 axis DRO, coolant, s/n: 30501168

FORT WORTH (2010) G450B universal milling machine with 59"x12" table, speeds to 3600 RPM, 5 HP, 6" KURT machine vise, MITUTOYO KA COUNTER 3 axis DRO, coolant, s/n: 2B582

HYD-MECH (2005) S-20 SERIES II horizontal band saw with 13"x18" capacity, 1" x 0.35" blade, coolant, s/n: 60505045

DANOBAT RE-1200A cylindrical grinder with 12" swing over table, 45" between centers, s/n: 507

MATTISON 48X16 hydraulic surface grinder with 48"x16" electromagnetic chuck, coolant, s/n: n/a

DC MORRISON MODEL K keyseater with 1.25" keyway width, 9" keyway length, s/n: n/a

SUNNEN MBB 1600 precision honing machine, s/n: 10176

RK MACHINERY single piston hydraulic H-frame shop press with 250 ton capacity, 48" between posts, s/n: n/a

WILTON 6" vertical belt sander

FURNACES/OVENS

CANEFCO car bottom natural gas fired heat treat furnace with 2000 deg. F. max. temperature, 1000 BTU/C.F., digital temperature gauge, HONEYWELL temperature recorder, approx. 7'x9'x9'H interior dimensions, s/n: C4593FI

NICHOLSON IND 4X4X4 electric batch oven with digital temperature control, s/n: 120

WELDING DEPARTMENT

RANSOME subarc welding system with MILLER CP/CC-1500P arc welding power source, LINCOLN ELECTRIC POWER WAVE welding power source, MILLER welding power source, TBS 76" diameter turn and tilt welding positioner, LINCOLN ELECTRIC POWER FEED 10A digital wire feeder, NEDERMAN articulating fume snorkel with blower and 2 tier steel work platform

MFG. UNKNOWN subarc welding system consisting of HOBART CYBERWELD 652 MIG welder, 46"x46" turn and tilt welding positioner, LINCOLN ELECTRIC POWER FEED 10A digital wire feeder, TRINCO DRY-BLAST dust collector/flux recovery unit, NEDERMAN articulating fume snorkel with blower, MILLER digital wire feeder with MILLER COOLMATE 3 water cooler and steel work platform

WARTSILA track mounted welding system with MILLER INVISION 456P MIG welder, MILLER 60M wire feeder, MILLER MILLERMATIC weld oscillator, MILLER COOLMATE 3 water cooler, 19.5" diameter turn and tilt welding positioner

WARTSILA track welder with MILLER AUTOMATIC 1DA weld controller, LINCOLN ELECTRIC MODEL TC-3 self-propelled travel carriage, 47" diameter turn and tilt welding positioner, 143" track

MILLER DELTAWELD 452 MIG welder with TAFE arc spray feeder/gun & cables, s/n: n/a

HOBART-TAFA MODEL 9000 arc spray system with cables & gun, s/n: n/a

MILLER MILLERMATIC 140 AUTO-SET all-in-one MIG welder with cables & gun, s/n: LK320881N

HOBART CYBERWELD 652 MIG welder with HOBART OLYMPIC 60 SERIES wire feeder, MILLER COOLMATE 3 water cooler, cables & gun, s/n: n/a

CANOX C-SW350 TIG welder with MILLER COOLMATE 3 water cooler, cables & gun, s/n: n/a

LINCOLN IDEALARC DC-400 arc welder with cables & gun, s/n: AC-557652

LINCOLN ELECTRIC IDEALARC 250 stick welder with cables and gun, s/n: n/a

LINCOLN ELECTRIC PRO-CUT 55 plasma cutter with cables & gun, s/n: U1010506130

AIRBOX portable fume snorkel

NEDERMAN articulating fume snorkel with blower

TOOL PRE-SETTER

ELBO CONTROLLI (2009) WASP digital tool pre-setter with desktop PC interface, s/n: 1166

BABBITTING DEPARTMENT

GISHOLT centrifugal casting machine with 72" diameter capacity, 1 HP & BALDOR digital control, s/n: n/a

MFG UNKNOWN centrifugal casting machine with 36" diameter capacity, speeds to 1000 RPM, s/n: n/a

NORELCO 2 ton capacity free standing jib arm with JET 2 ton electric hoist, 15' span & 136" under hook

60" diameter slow rotation bearing table

MAGNEFORCE HS10000R2 high voltage digital induction heater with 240V, 32.0 Amps, 13.5 KVA, .75 PF, 50/60 Hz, 3 Ph, 20-50 KHz output frequency, s/n: 70877

WARTSILA 5'x4'x7'H work hood

(5) babbitt pots

(12) melting torches

HUGE QUANTITY OF BABBITTING PARTS including babbitt mandrels, thrust pads, cast plates & bearing fixtures

MATERIAL HANDLING

CLARK C500Y160 LPG outdoor forklift with 16,000 lb. capacity, 210" vertical lift, pneumatic tires, s/n: Y1625-5-1218

TOYOTA BFGCU32 LPG forklift with 5000 lb. capacity, 187" vertical lift, solid tires, side shift, s/n: 14740

(2) **NORELCO** 5 ton capacity single girder overhead bridge cranes with SPACEMASTER SX 5 ton capacity electric hoists, 50' span & 20' under hook, s/n: n/a, n/a

BID ONSITE OR

REGISTER TO BID ONLINE

AT: **BidSpotter.com**

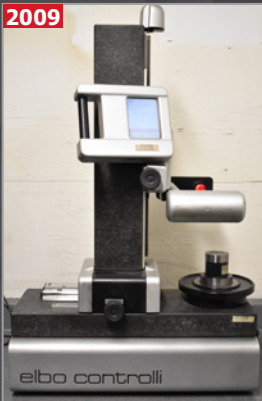
2 AVAILABLE



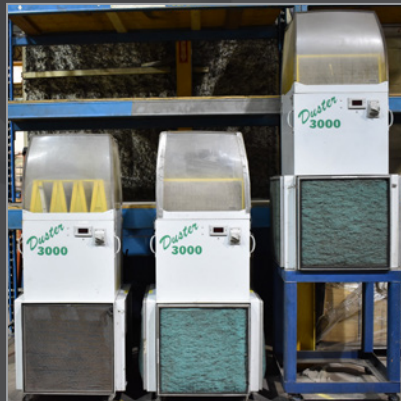
5 TON CAPACITY

NORELCO single girder overhead bridge crane

2009



ELBO CONTROLLI WASP digital tool pre-setter



Partial view of portable dust collectors available



Partial view of CAT 50 tool holders available

FEATURING: (10+) doubled ended pedestal grinders, NO. 3 arbor press, (5+) fireproof cabinets, LARGE QUANTITY of CAT 50 tool holders, RENISHAW OMP60 touch stylus CAT 50 probe, (20+) sections of medium duty pallet racking, HUGE ASSORTMENT of spare parts & motors, PERISHABLE TOOLING including CARBIDE INSERTS, drills, reamers, boring bars, end mills, steel work benches, tool boxes and MUCH MORE!

THIS IS A PARTIAL LISTING ONLY! FOR FURTHER INFORMATION, PLEASE VISIT WWW.CORPASSETS.COM

AUCTION DETAILS

INSPECTION

Monday, September 9 from 9:00 A.M. to 5:00 P.M. and morning of auction to start of auction.

REMOVAL

Small items: Wednesday, September 11 by 5:00 P.M.

Remaining items: Friday, September 20 by 5:00 P.M.

TERMS

Corporate Assets Inc. assumes no liability for errors or omissions in this brochure. Corporate Assets Inc. expressly reserves the right to determine the manner of conducting the auction as it may deem appropriate. All subject to prior sale.

PAYMENT

A Buyer's Premium will apply at this sale. International & online bidders may need a refundable deposit to bid. **SALE WILL BE CONDUCTED IN USD.**

Please refer to our website at **www.corpassets.com** or call 416.962.9600 for further information. Pour les services en français, composez le 1.855.583.5551

We Accept



Please visit our website as specific terms and conditions may apply.

BID ONLINE AT: **BidSpotter.com**

AFFILIATIONS



©2019 CORPORATE ASSETS INC. ALL RIGHTS RESERVED.

SALE HELD PROUDLY IN CONJUNCTION WITH:



www.prestigeequipment.com



CONTACT US TODAY TO LEARN MORE! 416.962.9600

SUBSCRIBE TO OUR NEWSLETTER AND GET THE LATEST AUCTION UPDATES

CORPORATE ASSETS INC

corpassets.com/newsletter-signup