

PRECISION AMADA FABRICATION FACILITY
**CUSTOM METAL
FABRICATOR**

56-01 55th Avenue, Maspeth, New York (Queens) 11378

- FEATURING:** 2005 Amada EMK3610NT Servo Electric Turret Punch
 • 2001 Amada Apelio III 2510-V Punch/Laser • 1987 Amada Pega 244
 Turret Punch • 1998 Amada LC1212A2 Laser • 2001 Amada FBD-1030NT
 7-Axis CNC Brake • 125-Ton Amada RG-125 • 1999 Amada RG-5020LD
 • 1999 Amada HFE-80-25S 8-Axis CNC Brake • Amada M-3054 Shear
 • 1999 Roper Whitney AB1014KC CNC Folder • Insertion Presses
 • Punch Presses up to 75-Ton • Welding Department • Forklifts
 • Box Truck • Racking & Plant Support



2005

33-Ton Amada EMK3610NT Electro Servo Turret Punch



2001

Amada Apelio III 2510-V 22 Turret Punch/2Kw Laser Combination



2001

110-Ton x 10'
Amada
FBD-1030NT
7-Axis CNC
Press Brake



1999

88-Ton x 8'
Amada
HFE8025S
8-Axis CNC
Press Brake

Online Bidding Through **BidSpotter.com**
Live Interactive Webcast Auctions

To Register For This Auction & Terms of Sale,
Please Visit www.kosterindustries.com

ONLINE BIDDING ENDS: Thursday, February 7th, 2019 Starting at 1:00 p.m. EST

ONE-DAY ONSITE INSPECTION: Wednesday, February 6th from 8:00 a.m. – 4:00 p.m.

Sale Presented By:

KOSTER
INDUSTRIES
AUCTIONEERS • APPRAISERS • LIQUIDATORS

www.kosterindustries.com • e-mail: info@kosterindustries.com

Corporate Office:
40 Daniel Street, Ste 2
Farmingdale, NY 11735
631-454-1766
Fax: 631-454-1779



In Conjunction With:



Asset Sales, Inc.
auctioneers * appraisers * liquidators

www.asset-sales.com

ELECTRO-SERVO CNC TURRET PUNCH PRESS

33-Ton Amada EMK3610, 60" x 100" servo electric turret punch, 60" x 98.4" travel, .187" max. sheet thickness, Fanuc AMNC PC based CNC control, 58-station, (4) auto index, brush table, S/N: 36102031 (2005)

PUNCH/LASER CNC TURRET PUNCH PRESS

22-Ton Amada Apelio III 2510-V Turret Punch/2Kw Laser Combination, Fanuc AF2000C laser, Fanuc FS-160iL, 59.8" x 98.4" travel, .250" max. punching, .375" max. laser, 31-station, (3) auto index, chiller, dust collector, 24K hour blower and vacuum pump done at 23,495 hours, current hours on laser 33,980, S/N: 3251005 (2001)

CNC PRESS BRAKES

110-Ton x 10' Amada FBD-1030 NT 7-Axis CNC Press Brake, 118" overall bending length, 106" between housings, 5.9" stroke, 16.5" open height, 15.75" throat depth, 5-axis back gauge, Amada AMNC PC control, bed crowning control, electric foot switch and full length treadle control, S/N: 10300112 (2001)

88-Ton x 8' Amada HFE8025S 8-Axis CNC Press Brake, 101" overall bed length, 103" between housings, 7.9" stroke, 18.5" open height, 16.5" throat depth, 5-axis back gauge, CNC crowning, Amada Operateur CNC control S/N: V991209 (1999)

55-Ton x 6' Amada RG5020 LD CNC Press Brake, 82" overall bending length, 59.8" between housings, 3.9" stroke, 14.6" open height, 15.75" throat depth, Amada LD 2-axis CNC control, S/N: 50200064 (1999)

138-Ton x 10' Amada RG125 CNC Press Brake, 122" overall bending length, 100.5" distance between housings, 3.9" stroke, 14.85" open height, 15.76" stroke, Amada NC9EX 3-axis CNC control, S/N: 01250679

17.5-Ton Guifil PE-6-16, up-acting press brake, 24" overall bed length, 22" between housings, 3.937" stroke, 12" open height, Essay CNC 402 2-axis control, programmable ram and back gauge control, S/N: 423-0608

CNC TURRET PUNCH PRESS

22-Ton Amada Pega 244 Turret Punch, Fanuc 6M CNC, 40' x 40' travel, 24-station thick turret, ball table, S/N: AP440042 (1987)

Large Quantity of Punch and Dies, Cabinets



138-Ton x 10' Amada RG-125 CNC Press Brake



17.5" x 24" Guifil PE6-16 CNC Press Brake

Large Quantity of American and European Style Brake Dies



LASER

Amada LC1212A2 Pulsar 1.5 Kw Hybrid Laser, 49.2" x 49.2" travel, .375" mild steel, .187" stainless steel, Fanuc 16L CNC control, Fanuc C1500B resonator, chiller, dust collector, S/N: 11212731 (1998)

CNC FOLDING BRAKE

Roper Whitney AB1014KC 10' x 14Ga. Kombi CNC Folder with New CNC Control in 2018, L-shaped back gauge, rotating Kombi bending beam, S/N: 591-6-99 (1999)

MECHANICAL PRESS BRAKE

60-Ton x 10' Verson 208-F, 3" stroke, 4" ram adjustment, motorized ram adjustment, 102" between housing, S/N: 10164-208-F

MECHANICAL SQUARING SHEAR

Amada M-3045 10' x 3/16" Mechanical Shear, 39" programmable back gauge, (60) strokes per minute, rear sheet supports, 120" squaring arm, (2) 36" front sheet supports, electric foot switch control, S/N: 30450671



3/16" x 10' Amada M-3045 Mechanical Power Shear with CNC Back Gauge

**ONLINE BIDDING ENDS:
Thursday, February 7th, 2019
at 1:00 p.m. EST**



6-Ton
Haeger 618-1C
Insertion Press

1999



4-Ton
Pemserter
Series 4
Insertion Press

2008

INSERTION PRESSES

6-Ton Haeger 618 Hardware Insertion Press, 18" throat, 0–8" adjustable stroke, 2HP hydraulic motor, electric foot switch, modular bowl feeder, misc. tooling, S/N: 06L-00734 (1999)

6-Ton Pemserter Series 4 Hardware Insertion Press, 18" throat, adjustable stroke, S/N: K4-4566 (2008)

PUNCH PRESSES

75-Ton Niagara M75 OBI Back Geared, air clutch, 5" stroke, 14-3/4" shut height, 3-3/8" adjustment, 36" x 24" bed area, 15" x 17-1/2" ram, 56 SPM, S/N: 44245

35-Ton Bliss C-35 OBI Flywheel Type Air Clutch, 3" stroke, 10-3/4" shut height, S/N: H60907, HP46677

32-Ton Bliss 20B-DT Deep Throat Flywheel Type, mechanical, 3" stroke, 2-1/2" adjustment, 10-1/2" shut height, S/N: HP33752, H47706

22-Ton V&O #2 OBI Flywheel Type, mechanical, 3" stroke, 2" adjustment

WELDING DEPARTMENT

40-KVA Lora Mdl. 140AP Pneumatic Spot welder, interlock industries Mdl. 105 single-phase microprocessor, 21" throat, chiller, foot switch, S/N: 994-5813

40-KVA Alphil Mdl. ARH12 Pneumatic Spot Welder, weld and squeeze timers, 220 volts, S/N: 6996

Approximately 30-KVA Spot Welder, weld timer, 28" throat

20-KVA Taylor Winfield Rocker Arm Type Spot Welder, 28" throat, timer
Lincoln Idealarc 250/250 Variable Voltage AC/DC Arc Welder, Berrand chiller, S/N: AC-679297

Lincoln Square Wave TIG 275

Lincoln Power Mig 255 and 255C Welders

Lincoln Precision Tig 275

Linde Power Mig 255 Welder

Linde Heliarc 250HF Welder with Bernard Chiller

Miscellaneous Welding Accessories Incl. Tables, Clamps, Welding Curtains, Tips, Torches, Hoses, Kemper Fume Collector, Etc.



Chevy C4500
Box Truck

2007

BOX TRUCK

2007 Chevy C4500, gas, approximately 40,000 miles, 15,600 GVWR, Mayor TE-20B 2,000-lb. power tail lift, VIN: 1GBE4C1GX7F416849 (2007)

TOOLROOM

Enco Mdl. 100-1599 Vari-Speed Vertical Knee Type Mill, 9" x 49" power feed table, 1.5Kw vari-speed auto motor, R8 spindle, Enco "Platinum" plus digital readout, S/N: 470010 (1997)

6" x 18" Reid Mdl. 618HYD Hydraulic Surface Grinder, 1HP direct drive spindle, 6" x 18" permanent magnetic chuck, S/N: 16687

9" x 16" Johnson Mdl. J Horizontal Bandsaw, 3/4" blade, 3/4HP, S/N: J-10856

16" DoAll Mdl. 1612-1 Vertical Bandsaw, band tension, welder, grinder, variable speed, 50–5,200 FPM, S/N: 148-711513

22" Heavy-Duty Floor Type Drill, belt drive, 22" x 23" hand crank table, drill chuck, 3/60/1 HP

18" Buffalo #18 Floor Type Drill Press, 14" x 14" table, 3/60

17" Cannedy-Otto 2-Spindle Gang Drill, belt drive

16.5" Delta Mdl. 17-900 Drill Floor Type Drill Press, 1/60, S/N: W9635

15" Central Machinery Mdl. 30697 Bench Drill, 9" x 9" T-slotted table, 210–3,700 RPM, 1/60 Butterfly Mdl. EL Die Filler

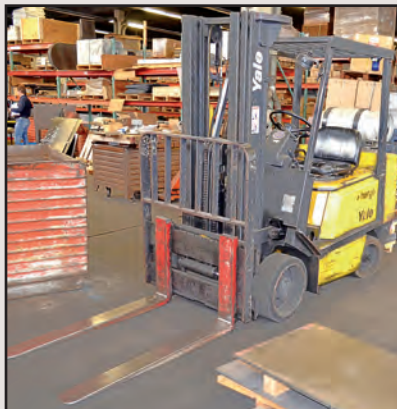
10" Porter Cable Mdl. B3 Vertical Belt Sander, 2HP, S/N: 1458

AIR COMPRESSORS

50HP Quincy Rotary Screw Type Air Compressor, S/N: 93284-OSB50ALA1-1

20HP Scales Mdl. RBBUUF390 Piston Type Tank Mounted Air Compressor, S/N: 35118RA

1.7HP Husky Mdl. WL660900A (AGM01) Vertical Air Compressor, 1/60, S/N: L9/26/2005-27584



5,800-Lb. Yale Mdl. GLC060TENUA083
Propane Forklift



4,500-Lb. Hyster Mdl. S50XM
Propane Forklift

Online Bidding Through

BidSpotter.com
Live Interactive Webcast Auctions

FORKLIFTS & MANLIFT

5,800-Lb. Yale Mdl. GLC060TENUA083 Propane Forklift, side shift, 188" reach, hard tires, S/N: N547313

4,500-Lb. Hyster Mdl. S50XM Propane Forklift, 189" reach, hard tires, side shift, S/N: D187V20028X

3,300-Lb. Toyota Mdl. 7FBEHU18 Electric Forklift, 131" reach, side shift, 36 volt, hard tires, S/N: 11947

4,500-Lb. Toyota Mdl. 6HBW23 Electric Walk-Behind Pallet Truck, 24 volt, S/N: 23724

5,000-Lb. Global Hand Pallet Jack with Digital Scale

Skyjack Mdl. SJIII-3220 Electric Scissor Manlift, 800-lb. capacity, 20' reach, S/N: 611237 (needs battery)

MISCELLANEOUS MACHINERY & SUPPORT EQUIPMENT

Lubow Mdl. HPB-6 Pneumatic Bender, S/N: 1-60

Powerland PDST24 24" 6.5HP Snow Blower, (6) forward, (2) reverse speeds

Powermatic Mdl. 66 Table Saw, guide, S/N: 876671137

30" Manual Sheet Metal Roller, 2" dia. rolls

Cantilever Racking: 12' High x 42" Arms and 10' High x 48" arms, Widths Up to 15' Overall

Amada TEG-160E Punch and Die Grinder, .75Kw, 6-1/2" 3-jaw chuck, S/N: H13674 (1987)

(2) Gaver 5H24NC Edge DeBurners, S/N: A678708, A978722

MISCELLANEOUS PLANT & SHOP SUPPORT

Approximately (60) Sections of Multi-Tiered Adjustable Pallet Racking, Heavy-Duty Manual Tapper, Dumone Tool Post Grinders, Collets, Vises, 2-Door Cabinets, Work Benches and Tables, Tapping Heads, Pedestal Fans, C-Clamps, Rolling Carts and Tables, Bench Vises, Pneumatic Nail Guns, Dewalt DWSSO Mitre Saw, Rolling Ladders, Tape Shooters, Strapping Carts, Walk-Behind Lift Cart, Double-End Bench Grinders, Hout Drill Cabinets, Plus Much More!

PRECISION AMADA FABRICATION FACILITY CUSTOM METAL FABRICATORS

Maspeth, New York (Queens)

**ONLINE BIDDING
ENDS: Thursday,
February 7th, 2019
at 1:00 p.m. EST**

IMPORTANT NOTICE TO ALL BUYERS REGARDING AUCTION PAYMENT:

18% Buyers Premium will apply on all purchases. Company or personal checks will be accepted only if accompanied by a letter from the payor's bank guaranteeing unqualified payment to Koster Industries, Inc. All checks must be made payable to the order of Koster Industries, Inc. Direct bank wire transfers to the account of Koster Industries, Inc. on balances due will be accepted with prior arrangement. **No lot may be removed until complete settlement is made.**

IMPORTANT NOTICE: Although information has been obtained from sources deemed reliable, the auctioneer makes no warranty or guarantee, expressed or implied, as to the accuracy of the information herein contained. It is for this reason that buyers should avail themselves of the opportunity to make inspection prior to the sale. All equipment being sold as-is, where-is with no guarantees.

Call Jason Adler at 800-999-9942, x3446
Or, Apply online at directcapital.com/apply/koster

- ✓ Fast Approvals
- ✓ Fixed Monthly Payments
- ✓ Preserve Cash Flow
- ✓ Lock-In Low Rates
- ✓ Add in Shipping Costs

**KOSTER
INDUSTRIES**
AUCTIONEERS • APPRAISERS • LIQUIDATORS

AUCTIONEERS • APPRAISERS • LIQUIDATORS
40 Daniel Street, Suite 2, Farmingdale, NY 11735
631-454-1766 • Fax: 631-454-1779

Presorted
First Class Mail
U.S. Postage
PAID
Eugene, Oregon
Permit No. 17



1999
55-Ton x 6'
Amada RG-5020LD
CNC Press Brake

**KOSTER
INDUSTRIES**
AUCTIONEERS • APPRAISERS • LIQUIDATORS

**ONLINE
ONLY**

AUCTION

PRECISION AMADA FABRICATION FACILITY CUSTOM METAL FABRICATORS

56-01 55th Avenue, Maspeth, New York (Queens) 11378



1.5Kw Amada LC1212A2 Pulsar Hybrid Laser



14Ga. x 10' Roper Whitney Mdl. AB1014KC Kombi CNC Folder

To Register For This Auction & Terms of Sale, Please Visit www.kosterindustries.com