

PLANT  
CLOSED

# 2 Day Public Auction

EVERYTHING  
MUST SELL!

PLANT CLOSED

## JOYGLOBAL



GIDDINGS & LEWIS RT 1600 6.1" CNC TABLE TYPE HORIZONTAL BORING MILL

HUGE OFFERING OF LATE  
MODEL LARGE CAPACITY  
CNC HORIZONTAL BORING  
MILLS, MACHINING  
CENTERS, TURNING  
CENTERS, GEAR  
MACHINERY & TOOLING  
**5170 W. 130TH STREET**  
**BROOK PARK, OH 44142**



TOYODA FH1250SX CNC HORIZONTAL MACHINING CENTER

**DAY 1:**  
**WEDNESDAY, MAY 11TH @**  
**9:00 A.M. EDT MACHINERY**

**DAY 2:**  
**THURSDAY, MAY 12TH @**  
**9:00 A.M. EDT TOOLING**

**Inspection:**  
**Monday, May 9th &**  
**Tuesday, May 10th**  
**From 8:00 A.M. - 4:00 P.M. EDT**



## Asset Sales, Inc.

Corporate Headquarters  
301 Post Office Drive, Suite C  
Indian Trail, NC 28079

Toll Free 888.800.4442 704.821.4315 Fax 704.821.4325  
www.asset-sales.com info@asset-sales.com

Auction being held in  
Conjunction with



**BidSpotter.com**

European Headquarters  
6 Hill End Close, Norwood Green  
Halifax, West Yorkshire, HX3 8RH  
Tel / Fax 07836.347880 peteram@asset-sales.co.uk

Asset Sales (Canada) Inc.  
4310 Prospect Road  
Bayside, Nova Scotia, Canada B3Z 1L5  
Tel 902.852.5331 Fax 704.821.4325 gmuller@asset-sales.ca



2 DAY AUCTION - DAY 1: WEDNESDAY, MAY 11TH @ 9:00 A.M. EDT LARGE MACHINERY  
DAY 2: THURSDAY, MAY 12TH @ 9:00 A.M. EDT TOOLING



TOYODA FH1250SX CNC HORIZONTAL MACHINING CENTER



GIDDINGS & LEWIS RT 1600 6.1" CNC TABLE TYPE HORIZONTAL BORING MILL

### HORIZONTAL MACHINING CENTER

TOYODA Model FH1250SX CNC Horizontal Machining Center with (2) 49.2" x 62.99" Pallets, 86.6" X-Axis Travel, 47.24" Y-Axis, 72.8" Z-Axis, 120 Station ATC, CAT #50 Spindle Taper, High Pressure 1000 PSI Thru Spindle Coolant, Big Plus Spindle Nose Option, Speeds 50 to 6,000 RPM, 94.5" x 70.9" Work Envelope, 1654 IPM Rapid Traverse, B-Axis Table Rotation, Renishaw OMP 60 Optical Spindle Probe, 11,000lb Weight Capacity, Dual Ball Screws on Y & Z A xis, Ball Screw Thermal Compensation on X,Y,Z Axis, Auger Type Turbo Chip Conveyor System, 60 HP Spindle Motor, FANUC 310i Control, sn:NS2707, mfg.2008

### GIDDINGS & LEWIS CNC TABLE TYPE HORIZONTAL BORING MILLS

GIDDINGS & LEWIS Model RT 1600 6.1" CNC Table Type Horizontal Boring Mill with 63" x 98.4" B-Axis Rotary Table, 141.7" X-Axis Travel, 102.36" Y-Axis, 49.21" Z-Axis, 78.74" W-Axis, 120 Station ATC, 4-Speed Ranges to 3500 RPM, CAT #50 ANSI Spindle Taper, 55,000lb Weight Capacity, Big Plus Spindle Option, Chip Enclosure, Chip Blaster, Thru-Spindle Coolant, Chip Conveyor, Part Probe, 984 IPM Rapid Traverse, 37/56 KW (75 HP), SIEMENS 840D Control, sn:480-01-07, mfg.2008

Can't Attend the Sale?  
Still Want to Bid? Visit  
Our Website at  
[www.asset-sales.com](http://www.asset-sales.com)  
For More Bidding  
Options. Check Out Our  
Upcoming Auction  
Calendar! You Can Also  
Sign Up to Receive Email  
Notifications by Joining  
Our Mailing List!



DAY 1: MACHINING CENTERS, HORIZONTAL BORING MILLS, ROTARY TABLES, ANGLE PLATES,  
INSPECTION, WELDING, MATERIAL HANDLING, TOOL ROOM & ETC...



GIDDINGS & LEWIS RT 1600 6.1" CNC TABLE TYPE HORIZONTAL BORING MILL

16  
HBMs



GIDDINGS & LEWIS RT 1600 6.1" CNC TABLE TYPE HORIZONTAL BORING MILL

GIDDINGS & LEWIS CNC TABLE TYPE HORIZONTAL BORING MILLS (continued)

GIDDINGS & LEWIS Model RT 1600 6.1" CNC Table Type Horizontal Boring Mill with 70.86" x 98.4" B-Axis Rotary Table, 188.9" X-Axis Travel, 121" Y-Axis, 49.21" Z-Axis, 78.74" W-Axis, 120 Station ATC, 4-Speed Ranges to 3500 RPM, CAT #50 ANSI Spindle Taper, 55,000lb Weight Capacity, Big Plus Spindle Option, Chip Enclosure, Chip Blaster, Thru-Spindle Coolant, Chip Conveyor, Part Probe, 984 IPM Rapid Traverse, 37/56 KW (75 HP), FANUC 31i A Control, sn:480-0173, mfg.2011

GIDDINGS & LEWIS Model RT 1600 6.1" CNC Table Type Horizontal Boring Mill with 63" x 98.4" B-Axis Rotary Table, 141.7" X-Axis Travel, 122" Y-Axis, 49.12" Z-Axis, 78.74" W-Axis, 120 Station ATC, 4-Speed Ranges to 3500 RPM, CAT #50 ANSI Spindle Taper, 55,000lb Weight Capacity, Big Plus Spindle Option, Chip Enclosure, Chip Blaster, Thru-Spindle Coolant, Chip Conveyor, Part Probe, 984 IPM Rapid Traverse, 37/56 KW (75 HP), FANUC 31i A Control, sn:480-0168, mfg.2011

GIDDINGS & LEWIS Model RT 1600 6.1" CNC Table Type Horizontal Boring Mill with 63" x 98.4" B-Axis Rotary Table, 188" X-Axis Travel, 82.67" Y-Axis, 49.21" Z-Axis, 78.74" W-Axis, 120 Station ATC, 4-Speed Ranges to 3500 RPM, CAT #50 ANSI Spindle Taper, 55,000lb Weight Capacity, Big Plus Spindle Option, Chip Enclosure, Chip Blaster, Thru-Spindle Coolant, Chip Conveyor, Part Probe, 984 IPM Rapid Traverse, 37/56 KW (75 HP), FANUC 31i A Control, sn:480-0170, mfg.2011



2 DAY AUCTION - DAY 1: WEDNESDAY, MAY 11TH @ 9:00 A.M. EDT LARGE MACHINERY  
DAY 2: THURSDAY, MAY 12TH @ 9:00 A.M. EDT TOOLING



GIDDINGS & LEWIS RT 1600 6.1" CNC TABLE TYPE HORIZONTAL BORING MILL



GIDDINGS & LEWIS PT 1800 6.1" CNC TABLE TYPE HORIZONTAL BORING MILL



DAY 1: MACHINING CENTERS, HORIZONTAL BORING MILLS, ROTARY TABLES, ANGLE PLATES, INSPECTION, WELDING, MATERIAL HANDLING, TOOL ROOM & ETC...



GIDDINGS & LEWIS PT 1800 6.1" CNC TABLE TYPE HORIZONTAL BORING MILL



VANGUARD 6.3" CNC TABLE TYPE HORIZONTAL BORING MILL

**GIDDINGS & LEWIS  
CNC TABLE TYPE  
HORIZONTAL BORING  
MILLS (continued)**

GIDDINGS & LEWIS Model PT 1800 6.1" CNC Table Type Horizontal Boring Mill with 71" x 1 65" Table, 165" X-Axis Travel, 82.67" Y-Axis, 49.21" Z-Axis, 59.05" W-Axis, 120 Station ATC, 4-Speed Ranges to 3500 RPM, CAT #50 ANSI Spindle Taper, 88,000lb Weight Capacity, Chip Blaster, Thru-Spindle Coolant, Chip Conveyor, Part Probe, 984 IPM Rapid Traverse, 37/56 KW (75 HP), Wired for B-Axis, SIEMENS 840D Control, sn:480-0024, mfg.2005

GIDDINGS & LEWIS Model PT 1800 6.1" CNC Table Type Horizontal Boring Mill with 71" x 1 65" Table, 165" X-Axis Travel, 82.67" Y-Axis, 49.21" Z-Axis, 59.05" W-Axis, 120 Station ATC, 4-Speed Ranges to 3500 RPM, CAT #50 ANSI Spindle Taper, 88,000lb Weight Capacity, Chip Blaster, Thru-Spindle Coolant, Chip Conveyor, Part Probe, 984 IPM Rapid Traverse, 37/56 KW (75 HP), Wired for B-Axis, SIEMENS 840D Control, sn:480-00-98, mfg.2007

VANGUARD 6.3" CNC Table Type Horizontal Boring Mill with 78" x 98" 360,000 Position B-Axis Rotary Table, 137.7" X-Axis Travel, 118.11" Y-Axis, 39.37" Z-Axis, 78.74" W-Axis, 40 Station ATC, CAT #50 ANSI Taper Spindle Speeds to 1500 RPM, 44,000lb Weight Capacity, Heidenhain Scales, Probe, Chip Conveyor, 60/50 HP, FANUC 18i Control, sn:07001, mfg.2008

GIDDINGS & LEWIS Model G60TX 6" CNC Table Type Horizontal Boring Mill with 72" x 1 20" Table, 120" X-Axis Travel, 72" Y-Axis, 36" Z-Axis, 63" W-Axis, 40 Station ATC, CAT #50 Taper Spindle Speeds 25-1120 RPM, 60,000lb Weight Capacity, Chip Conveyor, 30 HP, G&L 8000A Control, sn:450-38-79, mfg.1979

GIDDINGS & LEWIS Model G60T 6" CNC Table Type Horizontal Boring Mill with 72" x 1 44" Table, 144" X-Axis Travel, 72" Y-Axis, 48" Z-Axis, 65" W-Axis, #50 Taper Spindle Speeds 6-1120 RPM, 40 HP, 70,000lb Weight Capacity, G&L 800M Control, sn:450-1068-81, mfg.1981

ATTENDING THE AUCTION IN PERSON? WHAT YOU NEED TO BRING....

- Your Driver's License
- Business Card
- Tax Exempt Form if Non Taxable
- Bank Letter of Guarantee if Paying via Company Check

Download a lot book at  
[www.asset-sales.com](http://www.asset-sales.com)



2 DAY AUCTION - DAY 1: WEDNESDAY, MAY 11TH @ 9:00 A.M. EDT LARGE MACHINERY  
 DAY 2: THURSDAY, MAY 12TH @ 9:00 A.M. EDT TOOLING



GIDDINGS & LEWIS G60TX 6" CNC TABLE TYPE HORIZONTAL BORING MILL



GIDDINGS & LEWIS G60T 6" CNC TABLE TYPE HORIZONTAL BORING MILL

GIDDINGS & LEWIS CNC TABLE  
 TYPE HORIZONTAL BORING  
 MILLS (continued)

GIDDINGS & LEWIS Model G60T 6" CNC Table Type Horizontal Boring Mill with 72" x 144" Table, 144" X-Axis Travel, 96" Y-Axis, 48" Z-Axis, 99" W-Axis, #50 Taper Spindle Speeds 6-1120 RPM, 40 HP, 70,000lb Weight Capacity, G&L 800M Control, sn:450-1072-81, mfg.1981

GIDDINGS & LEWIS Model G60T 6" CNC Table Type Horizontal Boring Mill with 60" x 144" Table, 144" X-Axis Travel, 84" Y-Axis, 48" Z-Axis, 78" W-Axis, CAT #50 Taper Spindle Speeds 6-1120 RPM, Thru Spindle Coolant, 40 HP, 70,000 LB Weight Capacity, FANUC 31i Control (New 2011), sn:450-0171-81, Rebuilt & Retrofit 2011 By Machine Tool Solutions

GIDDINGS & LEWIS Model 70-H6-T 6" CNC Table Type Horizontal Boring Mill with 60" x 144" Table, 132" X-Axis Travel, 72" Y-Axis, 36" Z-Axis, 68" W-Axis, 48" x 60" B-Axis Rotary Table (may be sold separate), #50 Taper Spindle Speeds 5.6-1020 RPM, 40 HP, Power Draw Bar, Hardened Ways, Wired for B-Axis, G&L 8000B Control, sn:420-309-77R91, Rebuilt & Retrofit 1991 By Giddings & Lewis

GIDDINGS & LEWIS Model 70-H6-T 6" CNC Table Type Horizontal Boring Mill with 60" x 144" Table, 132" X-Axis Travel, 122" Y-Axis, 48" Z-Axis, 78" W-Axis, 60" x 60" B-Axis Rotary Table (may be sold separate), #50 Taper Spindle Speeds 5.6-1020 RPM, 40 HP, Power Draw Bar, Hardened Ways, Wired for B-Axis, G&L 8000B Control, sn:420-0308-7495, Remanufactured & Retrofit 1995 By Giddings & Lewis

GIDDINGS & LEWIS Model 70-H6-T 6" CNC Table Type Horizontal Boring Mill with 72" x 156" Table, 132" X-Axis Travels, 91" Y-Axis, 48" Z-Axis, 89" W-Axis, #50 Taper Spindle Speeds 5.6-1020 RPM, 40 HP, Power Draw Bar, Probe, Hardened Ways, Wired for B-Axis, G&L 8000B Control (New 1992), sn:420-284-74/92, Remanufactured & Retrofit 1992 By Giddings & Lewis

GIDDINGS & LEWIS Model H70-T 7" CNC Table Type Horizontal Boring Mill with 72" x 168" Table, 168" X-Axis Travel, 120" Y-Axis, 60" Z-Axis, 123" W-Axis, #50 Taper Spindle Speeds 5-800 RPM, 75 HP, 80,000lb Weight Capacity, Power Draw Bar, G&L 800M Control, sn:460-14-82, mfg.1982

GIDDINGS & LEWIS Model 70-H6-T 6" CNC Table Type Horizontal Boring Mill with 72" x 168" Table, 156" X-Axis Travel, 84" Y-Axis, 48" Z-Axis, 93" W-Axis, CAT #50 Taper Spindle Speeds 5.6-1020 RPM, 40 HP, Power Draw Bar, Wired for B-Axis, Wired for B-Axis, G&L 8000B Control (New 1994), sn:420-0285-94R, Remanufactured & Retrofit 1994 By Giddings & Lewis

GIDDINGS & LEWIS Model PC-50 5" CNC Table Type Horizontal Boring Mill with 60" x 144" Table, 144" X-Axis Travel, 72" Y-Axis, 36" Z-Axis, 78" W-Axis, CAT #50 Taper Spindle Speeds 25-1120 RPM, 30 HP, Power Draw Bar, Thru Spindle Coolant, FANUC 31i Control, sn:445-111-81, Rebuilt 2012 By MSC

GIDDINGS & LEWIS Model PC-50 5" CNC Table Type Horizontal Boring Mill with 60" x 120" Table, 144" X-Axis Travel, 72" Y-Axis, 36" Z-Axis, 78" W-Axis, #50 Taper Spindle Speeds 25-1120 RPM, 30 HP, Power Draw Bar, Hardened Ways, sn:445-112-82, mfg.1982 (not under power, missing parts)



DAY 1: MACHINING CENTERS, HORIZONTAL BORING MILLS, ROTARY TABLES, ANGLE PLATES, INSPECTION, WELDING, MATERIAL HANDLING, TOOL ROOM & ETC...



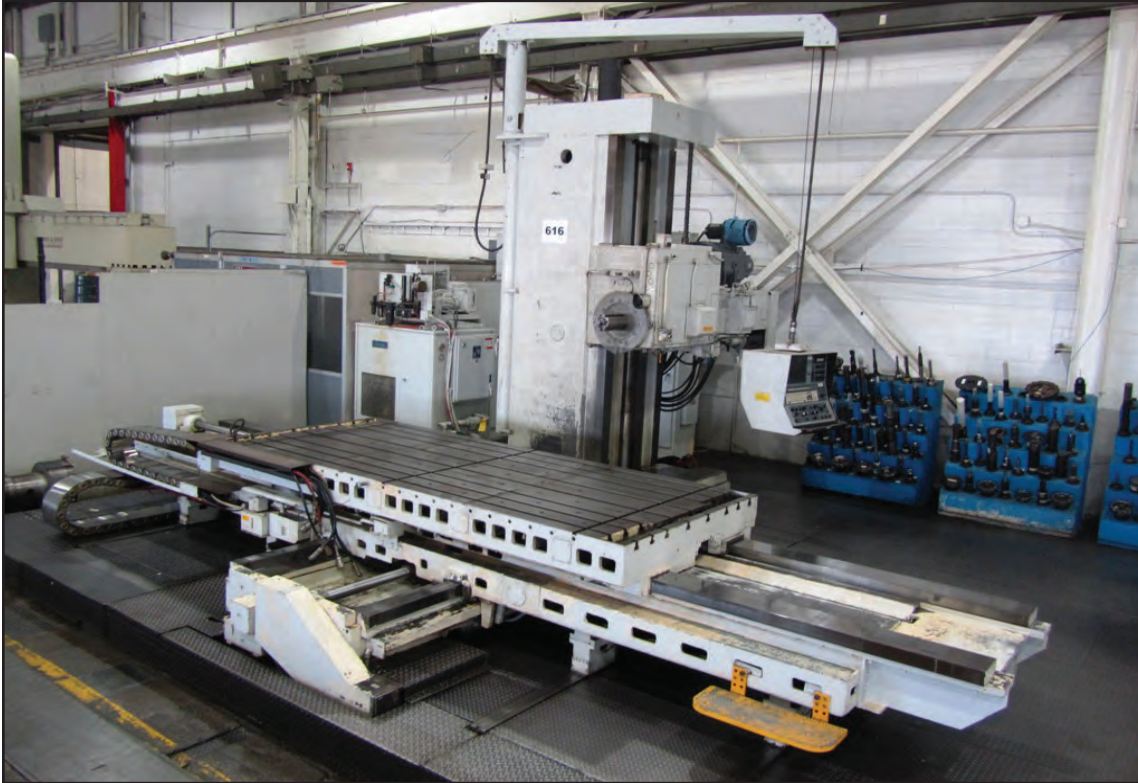
GIDDINGS & LEWIS G60T 6" CNC TABLE TYPE HORIZONTAL BORING MILL



GIDDINGS & LEWIS G60T 6" CNC TABLE TYPE HORIZONTAL BORING MILL



2 DAY AUCTION - DAY 1: WEDNESDAY, MAY 11TH @ 9:00 A.M. EDT LARGE MACHINERY  
DAY 2: THURSDAY, MAY 12TH @ 9:00 A.M. EDT TOOLING



GIDDINGS & LEWIS 70-H6-T 6" CNC TABLE TYPE HORIZONTAL BORING MILL



GIDDINGS & LEWIS 70-H6-T 6" CNC TABLE TYPE HORIZONTAL BORING MILL



ASSORTED INSPECTION



DAY 1: MACHINING CENTERS, HORIZONTAL BORING MILLS, ROTARY TABLES, ANGLE PLATES,  
INSPECTION, WELDING, MATERIAL HANDLING, TOOL ROOM & ETC...



GIDDINGS & LEWIS 70-H6-T 6" CNC TABLE TYPE HORIZONTAL BORING MILL



GIDDINGS & LEWIS H70-T 7" CNC TABLE TYPE HORIZONTAL BORING MILL



2 DAY AUCTION - DAY 1: WEDNESDAY, MAY 11TH @ 9:00 A.M. EDT LARGE MACHINERY  
 DAY 2: THURSDAY, MAY 12TH @ 9:00 A.M. EDT TOOLING



GIDDINGS & LEWIS 70-H6-T 6" CNC TABLE TYPE HORIZONTAL BORING MILL

**ROTARY TABLES / ANGLE PLATES**

GIDDINGS & LEWIS 5' x 8' Hydrostatic Rotary Table

(3) GIDDINGS & LEWIS 5' x 5' Hydrostatic Rotary Tables, sn:40-1821-77

4' x 4' Hydrostatic Rotary Table

3' x 5' Hydrostatic Rotary Table, sn:40-2270-03

GIDDINGS & LEWIS 6' x 8' Hydrostatic Rotary Table

4' x 5' Shop Made Manual Rotary Table

(2) GIDDINGS & LEWIS 3' x 5' Air Lift Rotary Table

GIDDINGS & LEWIS 3' x 4' Hydrostatic Rotary Table

EIMELDINGEN Model 2-16-1600 63" x 63" CNC B-Axis Rotary Table with +/- 3 Arc Seconds, 45,000lb Weight Capacity, sn:W16-486, mfg.2010

(2) 96"H x 31"W x 62"D • (4) 72"H x 24"W x 40"D • (2) 45"H x 61"W x 36"D • (2) DEVLIEG 45"H x 61"W x 36"D Angle Plates

**INSPECTION**

GIDDINGS & LEWIS SHEFFIELD Model BS.30.45.20 Gantry Style Coordinate Measuring Machine with 72" x 120" Granite Table, 177.16" X-Axis Travel, 118.11" Y-Axis, 78.74" Z-Axis, Renishaw Probe PHC-10, Software Updated 2013 by Hexagon, sn:F-0001-0995

PORTAGE LAYOUT SYSTEM 100" x 220" Capacity with Anilam Digital Readout

Large Assortment of GIDDINGS & LEWIS Hydrostatic Index Tables up to 60" x 96", Right Angle Heads, Facing Heads, Spindle Supports, Angle Plates, Tooling Systems, VIDMAR Cabinets, DEVLIEG & PARSET Tool Setters, WINSLOWMATIC & CINCINNATI Tool Grinders, Angle Plates, HENRY Coolant System, Fork Trucks, MAS VR-84A Radial Drill, Welders & More



GIDDINGS & LEWIS PC-50 5" CNC TABLE TYPE HORIZONTAL BORING MILL



ASSORTED ROTARY TABLES & ANGLE PLATES



DAY 1: MACHINING CENTERS, HORIZONTAL BORING MILLS, ROTARY TABLES, ANGLE PLATES, INSPECTION, WELDING, MATERIAL HANDLING, TOOL ROOM & ETC...



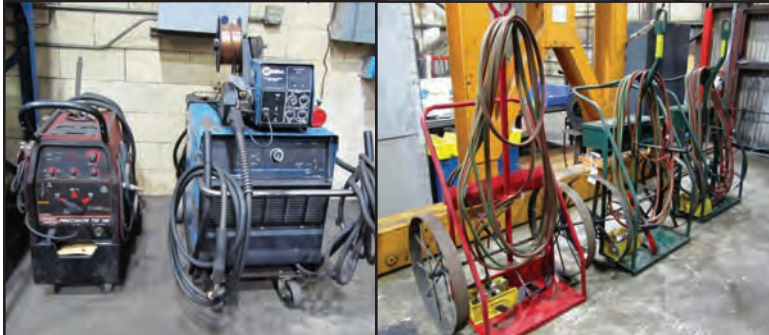
GIDDINGS & LEWIS SHEFFIELD BS.30.45.20 GANTRY STYLE CMM



CLARK 9900LB PROPANE FORKLIFT



ASSORTED CRANES



ASSORTED WELDING

**MATERIAL HANDLING**

CLARK Model C500-5100 9900lb Capacity Propane Forklift with 115" Reach, Solid Tires, sn:68J-0009-8410KOF

CROWN Model RR30/0-35 3500lb Capacity Stand-Up Type Electric Forklift with 29" In & Out Reach, 210" Reach Height, Charger, sn:1A131153

ECONOMY 750lb Capacity Hand Crank Lift

TENNANT Model 465 Walk Behind Floor Scrubber, sn:465-12801

Pallet Jack, Banding Carts, Etc...

KONE CRANE 7.5 Ton Single Leg Gantry Crane with Top Running Hoist, Self-Supporting, Approx. 25' Span

MILLER Dimension NT450 Portable Mig Welder with Miller 70 Series Wire Feeder, sn:MB310126V

MILLER Dimension Model 652 Welder with Miller Coolmate 4, Miller 70 Series Wire Feeder & Boom, sn:MB310588U

MILLER Deltaweld 652 Welder with Miller Coolmate 4, Miller 60 Series Wire Feeder & Boom, sn:KH560102

THERMAL Dynamics Portable Plasma Cutter

LINCOLN Precision Tig 185 Portable Welder

LINCOLN DC 400 Mig Welder with Miller Coolmate 4, Lincoln Double Header, DH-10 Wire Feed & B oom, sn:U1970711013

DELTAWELD 302 Portable Mig Welder with 24V Constant Speed Wire Feeder, sn:LG150060C

DONALDSON TORIT Portable Dust Collector

**WELDERS**

MILLER Pipeworx 400 Portable Mig Welder with Pipe Max Dual Wire Feeder, sn:LK130308G



2 DAY AUCTION - DAY 1: WEDNESDAY, MAY 11TH @ 9:00 A.M. EDT LARGE MACHINERY  
 DAY 2: THURSDAY, MAY 12TH @ 9:00 A.M. EDT TOOLING

TOOL ROOM

(2) BARBER COLMAN Model AHM 16-16 Manual Hobbing Machines with 43" Driver, 515 RPM on 4" Hob, .020-.0260 Depth of Cut, Dewell Timer, sn:3895R82 • sn:4052R82

DEVLIEG SPIRAMATIC Jig Mill with Approx. 46" Y-Axis Travel, 60" X-Axis Travel, 17" Z-Axis, 50 Taper Spindle, SONY DRO, 3' x 5' T-Slotted Table, 32" x 4 8" Sub Table, (may be sold separate), sn:0-195

POWERMATIC Model 87 20" Vertical Bandsaw with 24" x 24" Adjustable Table, Blade Welder Attachment, sn:67-8074

BRIDGEPORT Vertical Milling Machine with 9" x 42" T-Slotted Table, R8 Taper, sn:BR31344

TURNMASTER 21" x 80" Gap Bed Engine Lathe with 3 & 4 Jaw Chuck, Tail Stock, Taper Attachment, Inch & Metric Threading, Tool Post, Coolant, Steady Rest, sn:21881120036

WILTON Horizontal Bandsaw with 1" Blade & Clamping

TENNSMITH 4" Hand Brake

FAMCO 4C Pedestal Arbor Press

RUSH Model 250 Drill Grinder with 6 Jaw Chuck, sn:8501

HAMMOND 6" x 18" Hand Feed Surface Grinder with 6" x 1 2" Walker Magnetic Sine Plate, sn:519

CINCINNATI 8" Double End Grinder

BALDOR 6" Carbide Grinder

BROWN & SHARP Tool & Cutter Grinder

CINCINNATI & K.O. LEE Tool & Cutter Grinders

G&L ELECTRONICS Davis Amca International Winslowmatic HR Drill Grinder with 1-1/2" Capacity, sn:94700279

BRINELL Model A-4 Hardness Tester with Double Column, Certified 3-26-15, sn:12673

KOVOSVIT MAS Model VR-84A 32" x 13' Radial Drill with 11' Travel, 5' Vertical Travel, Spindle Speeds 9-1800 RPM, Morse Taper, 177" x 70" Base, sn:156271002

MISCELLANEOUS

Steel Tables, Clamps, Torch Carts, BALDOR D.E. Grinders, (16) VIDMAR / LISTA Cabinets, Lifting Chains



BARBER COLMAN AHM 16-16 MANUAL HOBGING MACHINE



DEVLIEG SPIRAMATIC JIG MILL



POWERMATIC 20" VERTICAL BANDSAW



BRIDGEPORT VERTICAL MILLING MACHINE



TURNMASTER 21" X 80" GAP BED ENGINE LATHE



WILTON HORIZONTAL BANDSAW



DAY 1: MACHINING CENTERS, HORIZONTAL BORING MILLS, ROTARY TABLES, ANGLE PLATES, INSPECTION, WELDING, MATERIAL HANDLING, TOOL ROOM & ETC...



RUSH DRILL GRINDER



CINCINNATI & K.O. LEE TOOL & CUTTER GRINDERS



G&L ELECTRONICS DAVIS AMCA INTERNATIONAL WINSLOMATIC HR DRILL GRINDER



TENNSMITH 4' HAND BRAKE



ASSORTED GRINDERS

Download a lot book at [www.asset-sales.com](http://www.asset-sales.com)

Want to Sell Your Shop or Know Someone Who Does? Call Us Toll Free at (888) 800-4442! We Pay Great Finder's Fees!



MAZAK QUICK TURN 30M CNC TURNING CENTER WITH MILLING



PFAUTER P400G CNC GEAR PROFILE GRINDING MACHINE

GEAR PLANT

PFAUTER Model P400G CNC Gear Profile Grinding Machine with 15.7" Maximum Workpiece Diameter, 1.37" Maximum Workpiece Depth, 17.32" Distance Between Wheel & Workpiece, 15.7" Maximum Axial Slide Travel, 17.87" Maximum Tangential Slide Travel, 2" x 14" Grinding Wheel, +/- 45 Degree Swivel, 394 IPM Rapid Traverse Rate, Tailstock, Onboard Measuring, Handheld Pendant, SIEMENS 840D CNC Control, sn:28553, mfg.1998

NILES Model ZP-12 CNC Gear Profile Grinding Machine with 29.5" X-Axis Travel, 24" Y-Axis, 7" Z-Axis, 7" W-Axis, A-Unlimited, B-90 Degrees, U-49.2", 49.2" Maximum Tip Diameter, 7.87"-31.88" Center Distance Range, 29.52" Maximum Stroke, 2.2" Maximum Profile Height (Extended), 9.84"-13.77" Grinding Wheel Diameter Range, 3130 Maximum Grinding Spindle Speed, 36" Diameter Rotary Table, 17.32" Diameter x 9.25" Depth Table Bore, 6000lb Table Weight Capacity, Tailstock, Onboard Measuring System with Renishaw Probe, KAPP D200 CNC Control, Handheld Pendant, Adaptive Feed Rate, Warmup Program, Modem Connection, Remote Diagnosis, Capable of External Dressable & CBN Grinding, sn:16203, mfg.2001



2 DAY AUCTION - DAY 1: WEDNESDAY, MAY 11TH @ 9:00 A.M. EDT LARGE MACHINERY  
 DAY 2: THURSDAY, MAY 12TH @ 9:00 A.M. EDT TOOLING



**NILES ZP-12 CNC GEAR PROFILE GRINDING MACHINE**



**OKUMA LB-35II 1SC-2000 CNC TURNING CENTER**



**OKUMA STEADY REST**



**NIHON KIKAI CHANGE GEARS**



**NIHON KIKAI NDH-1200 UNIVERSAL GEAR HOBBER**

**GEAR PLANT (continued)**

MAZAK Model Quick Turn 30M CNC Turning Center with Live Milling, 22.05" Maximum Swing, 16.14" Maximum Turning Diameter, 47.24" Spindle End to Turret Face, 3.46" Spindle Bore, 3.03" Bar Work Capacity, 441lb Maximum Chucking Work Weight, 2205lb Maximum Shaft Work Weight, 35-3500 RPM, 12" Kitamura 3-Jaw Chuck, 12-Position Turret, C-Axis & Live Milling, 34.5 HP Motor, Tailstock, Tool Presetter, Chip Conveyor, MAZATROL M-Plus CNC Control, sn:120964, mfg.2002

OKUMA Model LB-35II 1SC-2000 CNC Turning Center with 28.38" Swing Over Bed, 19.29" Maximum Turning Diameter, 81.50" Distance Between Centers, 78.74" Maximum Work Length, 4.33" Spindle Bore, 14-3200 RPM, 40 HP Motor, 12-Position Turret, A2-8 Spindle Nose, LNS Double Steady Rest, Programmable Tow-Along Tailstock, Chip Conveyor, OSP-7000L CNC Control, sn:0311

WARNER & SWASEY Model SC-28 CNC Turning Center with 28" Maximum Turning Diameter, 28" 3-Jaw Scroll Chuck with Power Wrench, 6.25" Spindle Bore, 6-Station Turret, 60 HP Motor, 12-850 RPM, Chip Conveyor, GE FANUC 18iT CNC Control, sn:2694263, Rebuilt & CNC Retrofit 1999

NIHON KIKAI Model NDH-1200 Universal Gear Hobber with 32" Diameter Table, 47.24" Capacity, Tailstock, Change Gears, sn:50441

NIHON KIKAI Gear Hobber Tooling

OKUMA Steady Rest



**WARNER & SWASEY SC-28 CNC TURNING CENTER**



DAY 1: MACHINING CENTERS, HORIZONTAL BORING MILLS, ROTARY TABLES, ANGLE PLATES, INSPECTION, WELDING, MATERIAL HANDLING, TOOL ROOM & ETC...





DAY 2: THURSDAY, MAY 12TH @ 9:00 A.M. EDT TOOLING





# DAY 2: THURSDAY, MAY 12TH @ 9:00 A.M. EDT TOOLING







# Asset Sales, Inc.

Corporate Headquarters

301 Post Office Drive, Suite C  
Indian Trail, North Carolina 28079

Toll Free: 888.800.4442 Direct: 704.821.4315

Fax: 704.821.4325 – www.asset-sales.com

Asset Sales Inc. • Lance Mannion – Ohio License #51799773839



Presorted  
First Class Mail  
U.S. Postage  
PAID  
Kokomo, IN  
Permit No. 154

Auction  
being held in  
Conjunction  
with



16  
HBMs



GIDDINGS & LEWIS CNC TABLE TYPE HORIZONTAL BORING MILLS

## ABBREVIATED TERMS & CONDITIONS OF AUCTION

***YOUR PARTICIPATION AND BIDDING ARE CONSIDERED A LEGALLY BINDING CONTRACT – IT IS PROHIBITED TO BID ON ANY ITEM THAT YOU CANNOT PAY FOR IN FULL BY THE SPECIFIED DATE OR REMOVE BY DESIGNATED DATE.***

Subject to amendments and modifications announced by the auctioneer at the time of the auction, any person participating in the auction shall be bound by the following terms and conditions. The auctioneer does not warrant the accuracy, authenticity, description, weight, count or measure of any listings specified herein.

All articles will be sold to the highest bidder conforming to the bid process in accordance to the AUCTIONEER'S TERMS & CONDITIONS – COMPLETE COPIES AVAILABLE AT WWW.ASSET-SALES.COM. No article shall be removed unless paid in full and all articles purchased shall be removed in the time allocated by the auctioneer. No item, no matter how small or how far the purchaser has to travel, may be removed until the close of the auction sale.

All payments shall be by way of cash, certified check, wire transfer and/or a company check accompanied by a bank letter of guarantee payable

to Asset Sales, Inc. All bidding and invoicing will be in US Dollars (\$). All bidders are responsible for all applicable taxes.

Rigging/Removal of sold equipment is the sole responsibility of the buyer and must be completed by the posted date. Rigging/Removal may not begin until payment has been made in full and the auction sale is complete. All heavy rigging will require a certificate of insurance for \$1,000,000.00 naming Asset Sales, Inc. as the insured.

ALL SALES ARE FINAL, ON AN "AS IS – WHERE IS," "IN PLACE," "WITH ALL FAULTS" BASIS. A 15% Buyer's Premium will apply to all onsite purchases and a 18% Buyer's Premium for online purchases.

### REGISTRATION & BIDDING ONLINE:

If you plan to bid with Bidspotter.com, you must be pre-approved by Asset Sales, Inc. The pre-approval process is easy, but necessary. Asset Sales, Inc. will verify telephone number and confirm agreement to the Terms and Conditions.

***ANYONE OUTSIDE OF THE CONTINENTAL UNITED STATES WILL BE REQUIRED TO WIRE TRANSFER A MINIMUM DEPOSIT OF \$5000 TO BE APPROVED FOR ALL NON-ONSITE BIDDING.***

## DIRECTIONS

From Cleveland Hopkins International Airport:

Exit airport to I-71. Use the right lane to merge onto OH-237 N. Take the Ohio 17 exit toward I-480 W / Ohio 237. Turn right onto Brookpark Rd. continue for 2.4 miles. Turn right onto W 130th St. Plant will be on the right & is about 11 minutes from the airport.

## HOTELS

**HILTON GARDEN INN CLEVELAND**  
4900 Emerald Ct. SW - Cleveland, OH 44135  
(216) 898-1898

**HOLIDAY INN EXPRESS CLEVELAND**  
16330 Snow Rd - Brook Park, OH 44142  
(216) 433-0004

# 2 DAY PUBLIC AUCTION

# JOYGLOBAL

**HUGE OFFERING OF LATE MODEL LARGE CAPACITY CNC HORIZONTAL BORING MILLS, MACHINING CENTERS, TURNING CENTERS, GEAR MACHINERY & TOOLING  
BROOK PARK, OH**

**WEDNESDAY, MAY 11TH & THURSDAY, MAY 12TH @ 9:00 A.M. EDT**