

ONLINE AUCTION

Heavy Machining & Boring Facility

Assets No Longer
Required in the
Continuing Operations of:

FARREL POMINI
continuous compounding systems

25 Main Street
Ansonia, CT 06401

BID ONLINE: Monday, November 28 thru Thursday, December 1

INSPECTION: Wednesday, November 30 9:00 am - 4:00 pm EST

Horizontal & Vertical Boring Mills • Roll Grinders • Lathes • Surface Grinders
Radial Drills • Planer Mill • Band Saws • Jig Mill • Straightening Presses
Shaft Polisher Welding Equip. • Compressors • Boilers • Pallet Rack • Lab Equip.

★ See PPL & BidSpotter Websites for Numerous Late Additions to This Auction ★



BID ONLINE ONLY

BidSpotter.com

18% Buyer's Premium Applies



224.927.5320 www.pplauctions.com

631.249.5566 prestigeequipment.com

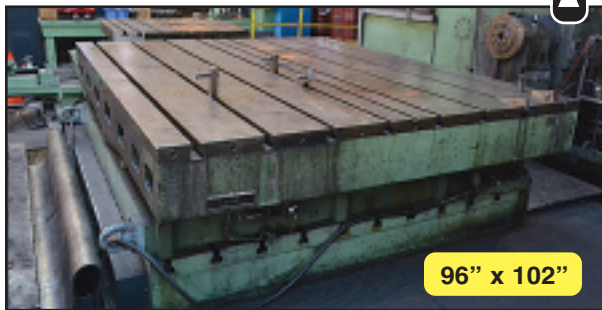
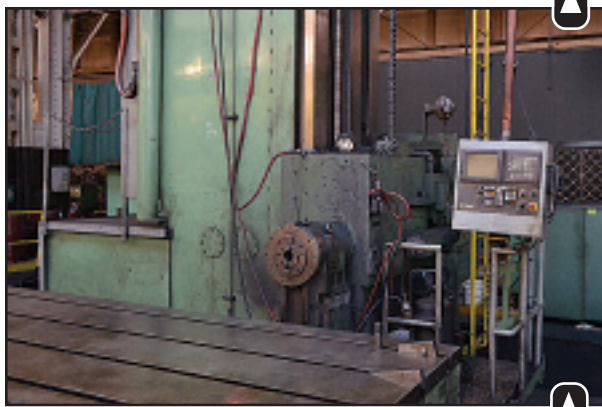
203.733.7191 www.hgpauction.com

PPL License No. 444.000322

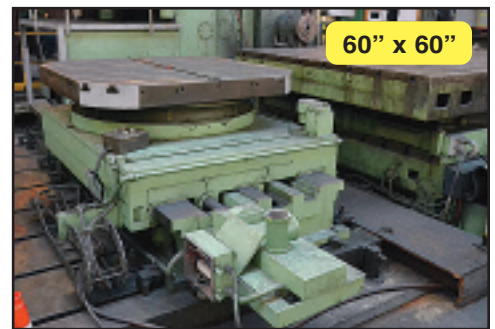
David Muslin License No. 441.001650

Joel Bersh License No. 441.000826

Michael L. Ackerman License No. 440.000539



**BID ONLINE
ONLY**
BidSpotter.com
**November 28
- December 1**



HORIZONTAL BORING MILLS

Giddings & Lewis 6" CNC Floor Type Horizontal Boring Mill Model 75-H60-UF, S/N 426-16-74,
X - 240" Column Travel, Y - 144" Head Travel, Z - 60" Spindle Travel, #50 Taper, Power Draw Bar, 2.1 - 1000 RPM, 96" x 102" Infeeding Work Table, 96" x 120" G&L 75,000 lb. Weight Capacity Hydrostatic Rotary Table, 108" x 140" T-Slot Floor Plate, Ball Screws, Fanuc Red Cap Servo Drives, Right Angle Milling Head, 50 HP, Coolant with Chiller, Fanuc O-M CNC

Cincinnati Gilbert 5" Table Type Horizontal Boring Mill Model J, S/N 283J,
X - 108" Table Travel, Y - 84" Head Travel, Z - 36" Spindle Travel, W - 82" Saddle Travel, with Outboard Support, 60" x 120" Work Table, 10 - 1000 RPM, #50 Taper, Power Draw Bar, 30 HP, Hardened Ways, Way Covers, Outboard Support, DRO

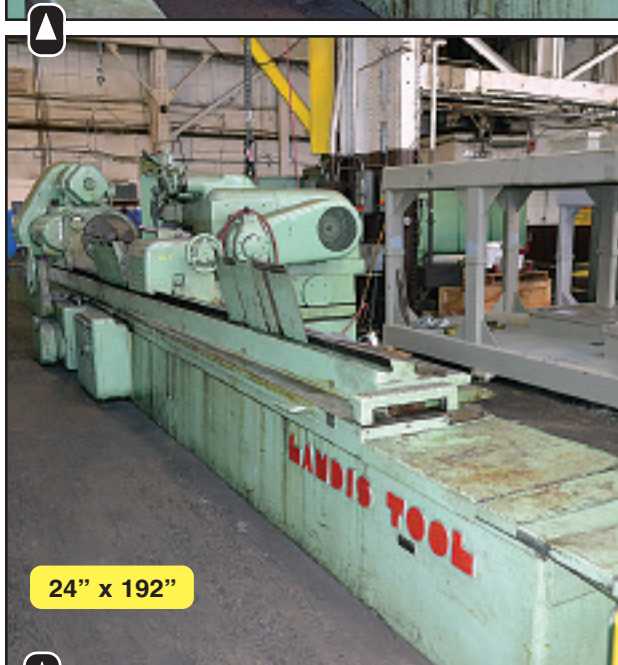
Cincinnati Gilbert 60" x 60" Cross Sliding Air Lift Rotary Table, 36" Travel • Wohlhaupter Adjustable Boring Head Model UPA4/24943S5
Large Assortment Boring Mill Milling & Boring Tooling & Accessories • Large Assortment Heavy Duty Boring Mill Set-up/Support Blocks



CYLINDRICAL GRINDERS

Landis 24" x 192" Heavy Duty Plain Cylindrical Grinder Model LFF,
 S/N 614-7, 25.25" Max. Swing,
 6500 lb. Weight Capacity on Centers,
 30" x 3" x 12" Wheel, 20 HP DC Wheel Head,
 25 - 100 RPM Headstock Speeds,
 500/2000 RPM Work Drive,
 3 - 100 IPM Rapid, Steady Rests, Coolant

Farrel 36" x 232" CNC Cylindrical Roll Grinder,
 S/N N/A,
 DC Motor Driven Work Head with Metal Bed Mounted
 on Heavy Duty Concrete Base,
 DC Motor Driven Wheel Head Mounted on Metal Bed,
 Coolant with In-Floor Tank,
 CNC Engineering CNC Control,
 Operator Pedestal, Swivel Milling Head

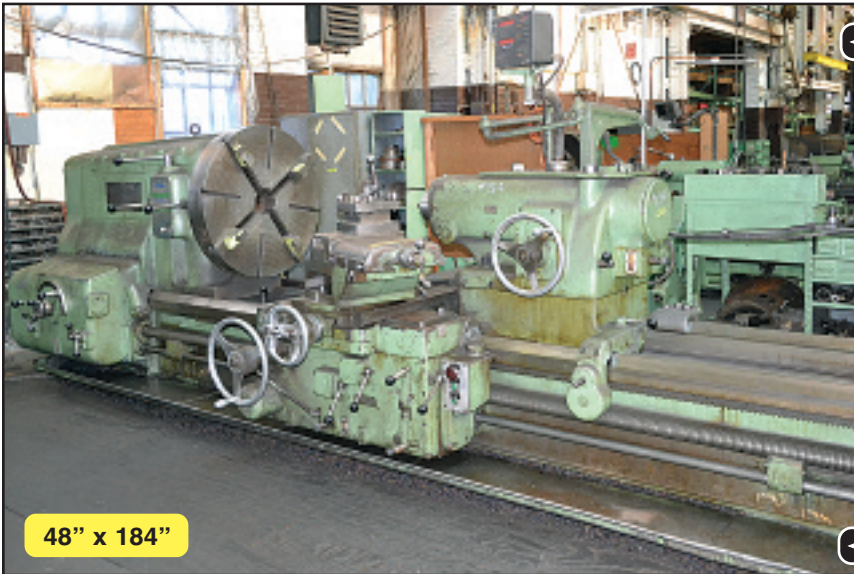


24" x 192"



36" x 232"





**BID ONLINE
ONLY**

**Nov 28 -
Dec 1**

LATHES

- Poreba 46" / 64" x 240" Removable Gap Bed Geared Head Engine Lathe Model TR 115 B2, S/N 1101-042,**
Variable Speeds, 4.75" Bore, 18" 4-Jaw Chuck, Carriage with Cross Slide, Taper, Threading, Tailstock, Steady Rest, DRO, Pan Bed, Coolant
- American Pacemaker 48" x 184" Geared Head Engine Lathe, S/N 77431/65,**
6 - 600 RPM, 2-3/4" Bore, 35.5" 4-Jaw Chuck, Carriage with Cross Slide, Taper, Threading, Tailstock, Steady Rests, DRO, Pan Bed, Coolant
- Toolmex 25" x 124" Geared Head Engine Lathe Model TUR-630M, S/N 48650,**
3" Bore, 18 - 1400 RPM, 15" 4-Jaw Chuck, Carriage with Cross Slide, Taper, Threading, Tailstock, Steady Rests, Pan Bed, Coolant
- Hendey 17" x 45" Geared Head Engine Lathe, S/N 37680H-705,**
18 - 539 RPM, 10" 3-Jaw Chuck, Carriage with Cross Slide, Threading, Tailstock, Pan Bed
- South Bend 10" x 24" Cabinet Base Lathe, S/N 21548R, Collet Holder, Carriage with Cross Slide, Taper, Threading, Tailstock**



SURFACE GRINDERS • VERTICAL BORING MILL

Mattison 36" x 120" Hydraulic Surface Grinder, S/N 19870, 50 HP Spindle Drive, (2) 36" x 60" Electromagnetic Chucks with Neutrofier II Chuck Control, Coolant with Filter System, Wheel Dresser, Remote Coolant Tank with Filter & Pump

Jakobsen 8" x 24" Hydraulic Surface Grinder Model 824, S/N 1J1026, 8" x 18" Electromagnetic Chuck with Neutrofier Control, Wheel Dresser, Power Downfeed, Remote Coolant Tank with Pump, Magnetic Filter

Brown & Sharpe 10" x 30" Hydraulic Surface Grinder Model 1030 Micromaster, S/N 523-1030-370, 10 x 30" Permanent Magnetic Chuck, Coolant Tank with Pump

Gray 72" Vertical Boring Mill, S/N N/A, 84" Actual Swing, 60" Max. Under Rail, (2) Vertical Ram Heads with 60" (est.) Stroke, Right Side Head, 72" Dia. Face Plate with (4) Top Jaws, Variable Speeds to 250 RPM, Pendant Control, DRO

RADIAL DRILLS • PLANER MILL

Carlton 8' Arm x 22" Column Rail Mounted Radial Arm Drill, S/N 5A-4706, Power Elevation/Clamp/Traverse, 12 - 1200 RPM, Threading, 48" x 48" x 18" Universal Radial Drill Box Table

Cincinnati Bickford 3' Arm x 9" Column Radial Drill, S/N 1R2463, Mono Arm Control, Universal Box Table

Farrel Newton 5' x 18' x 5' (est.) Open Side Planer Mill, S/N 60XA53, 105 - 722 RPM, DC Drive Rail Head & Side Head with 12" Quills, 5' x 18' 2-Piece Work Table with DC Drive, Power Elevation, Pneumatic Clamping, Swivel Milling Head, Itek 3-Axis DRO, Operator Pendant

Assorted Planer Mill Tooling & Clamping Equipment



BID ONLINE ONLY

BidSpotter.com



BAND SAWS • JIG MILL • STRAIGHTENING & SHOP PRESSES

DoAll 12" x 18" Automatic Horizontal Band Saw, S/N N/A, 24" Power Stroker, Pneumatic Clamps & Feed, Coolant

DoAll 26" Vertical Band Saw Model 2612-2H, S/N 206-67255, 24" x 30.5" T-Slot Pneumatic Feed Tilting Work Table, Butt Welder & Grinder, DSI

DoAll 16" Vertical Band Saw Model ML, S/N 5317931, 24" x 24" Tilting Work Table, Butt Welder/Grinder, DSI

Powermatic 14" Pedestal Vertical Band Saw Model 143, S/N 0430, Tilt Table

Devlieg Spiramatic Jigmil Model 3B-48, S/N 5-255, 25 - 1200 RPM, 30" x 48" Work Table, Heidenhain Programmable DRO

Dake 150 Ton Rolling Frame 2-Way Adjustable Ram Elec-Draulic Straightening Press, 48" Between Housings, 56" Frame Travel Along Bed, 42" x 96" Bed, 10" - 50" Daylight

Power Team 100 Ton Adjustable Bed H-Frame Hydraulic Shop Press Model SPF100, S/N 0912V22048, with Hydraulics, 50" Between Housings

Manley 25 Ton H-Frame Adjustable Bed Manual Hydraulic Shop Press Model P10266-53, S/N HP25A, 27" Between Housings, Side Mounted Arbor Press



SHAFT POLISHER • WELDING RELATED EQUIPMENT

Custom Shaft Polishing Cell with (2) Sets Aronson 14" Power Tank Rolls, (1) Fox Swing Wheel Grinder, (1) G&P 4" Swing Belt Grinder, Open Front Grinding Booth, Farr Pulsejet Dust Collector Model Tenkay 116790-4 Size 8D, S/N 96DC23187

25 HP (est.) Heavy Duty Swing Grinder • G&P Machine 4" Hanging Swing Belt Grinder

Lincoln 600 Amp Portable MIG Welder Model R3S600, Power Supply, Bernard Cart with Boom, LN-9F Wire Feed, Cables, Gun

Lincoln 500 Amp Portable MIG Welder Model Idealarc Pulse Power 500, Bernard Cart with Boom, LN-9F Wire Feed, Cables, Gun

Lincoln 400 Amp Portable Arc Welder Model Idealarc DC-400, with Cables & Clamps

(2) Sure Weld 400 Amp DC Arc Welders, with Cables & Clamps

Linde 300 Amp Portable TIG Welder Model UCC-305, Cables, Gun, Foot Treadle, Radiator

Union Carbide 300 Amp Portable TIG Welder Model CE-301HW, with Cables, Gun, Radiator, Cart

Marquette Power Heat MIG Welder Model 12-175 • Bernard Welding Cart with Boom

Aronson 12,000 lb., 32" Dia. Horizontal Rotary Welding Positioner • Aronson 200 lb. Vertical Rotary Welding Positioner, 12" Chuck

(3) Aercology Weld Air Portable Welding Fume Collectors Model WA1000, S/Ns 48339, 52030, 616869

Aercology Portable Welding Fume Collector • Aronson 14" Adjustable Width Power Tank Rolls, S/N 72185

Assorted Heavy Duty Steel Welding Tables • (10) Assorted Vinyl Welding Screens



Have Assets for Sale? Need an Appraisal or other Creative Solution?

We can assist with: Auctions • Cash Purchases • Financing • Liquidations

Contact Joel Bersh at:
Phone: 224-927-5303
E: joel@pplauction.com



EMPLOYMENT OPPORTUNITY: PPL is expanding! We're looking for motivated people with basic manufacturing, machinery sales, auction or appraisal experience to join our team

AIR COMPRESSORS • BOILERS

Ingersoll Rand 75 HP Rotary Air Compressor Model SSR-EP75, S/N I1509490, 317 CFM, 125 PSIG, Solid State Control
Ingersoll Rand Refrigerated Air Dryer Model D212NC-A16-100, S/N 336980-3 • 48" Dia. x 10' (est.) Vertical Air Receiver Tank, w/Moisture Trap
Fulton Low Pressure Fuel Fired Steam Boiler Model FB-020-A, S/N 58403 (1989), MWP 300 lb., 690 lbs. Steam per Hour
HSI High Pressure Steam Hydro-Test Boiler Model 1638-7-4C, S/N 4265/86061, with Accessories

MISCELLANEOUS EQUIPMENT

Bridgeport 1 HP Vertical Mill, S/N 89931, 9" x 42" Power Feed Table • L&A Products Portable Range Hot Pressure Washer, w/Hose & Wand
Ridgid Portable Power Chuck Model 535, with Cut-off, Reaming, Threading • Everett 14" Bench Top Abrasive Cut-off Saw
Kalamazoo 14" Bench Top Abrasive Cut-off Saw • Standard 2 HP Double End Snag/Face Grinder
Hammond 4-Carbide Belt Finisher Model 454, S/N 1253 • 36" x 47" x 34" Angle Plate • 48" x 48" x 36" Angle Plate
72" x 96" x 6" Heavy Duty Steel Layout Table • Rock of Ages 72" x 96" x 14.5" Granite Surface Plate
(26) Sections Adjustable Bolted Pierced Metal Heavy Duty Storage Shelving • Large Assortment Perishable Tooling

Plant Support Equipment including:

Benches, Multi-Drawer Tooling Storage Cabinets, Pallet Jacks, Drill Presses, Snag Grinders, Storage Cabinets, Shelving, Pallet Rack, Shop Furniture, Hand Trucks, Transport Carts, Lifting Equipment, and More

Tons of Assorted Miscellaneous Scrap

PALLET RACK • LABORATORY EQUIPMENT

(68) Sections 36" or 48" x 96" x 25' High (est.) 6-Tier or 10-Tier Heavy Duty Adjustable Pallet Rack, Some with Wire Mesh Shelves
Assorted Lab Test Equipment

See Complete Auction Terms & Conditions On Our Website – www.pplauctions.com



224.927.5320 www.pplauctions.com

631.249.5566 prestigeequipment.com

203.733.7191 www.hgpauction.com

PPL Auction

Phone: 224.927.5320

www.pplauctions.com