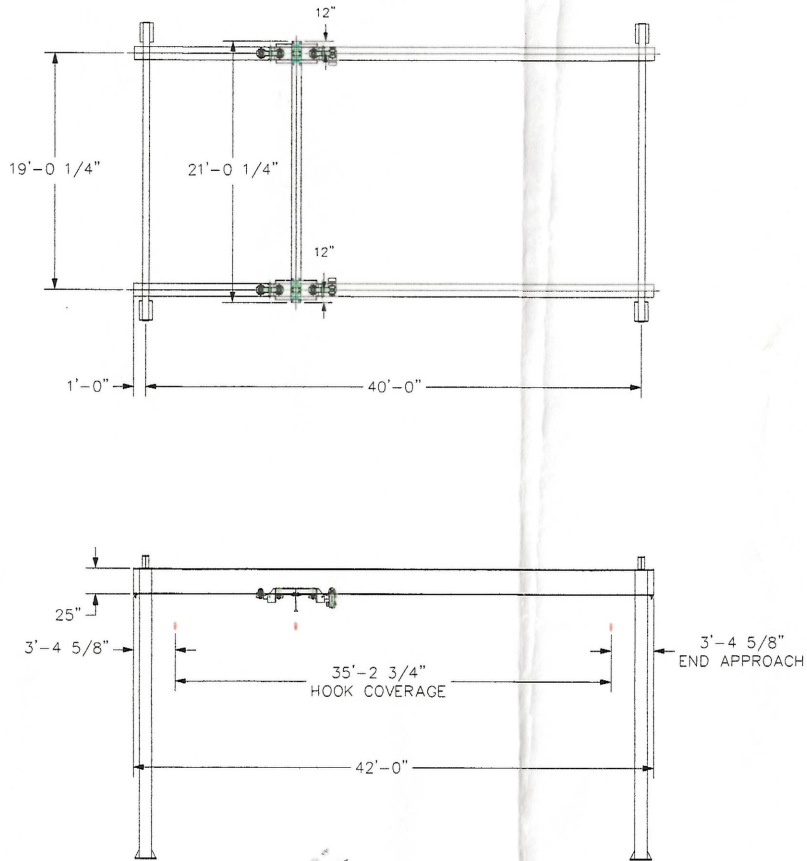
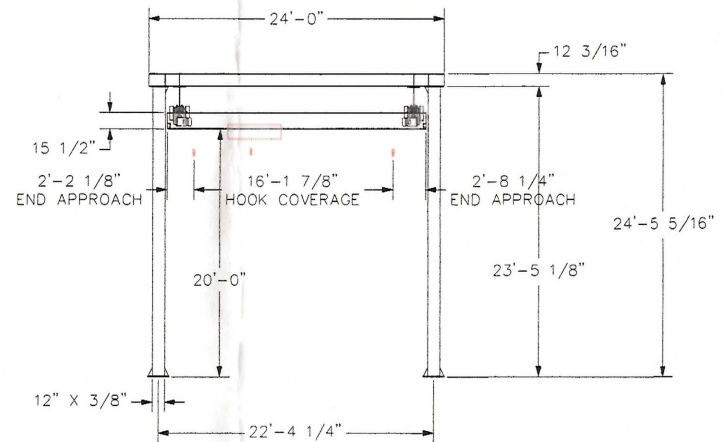


*** ATTENTION: GORBEL INC. ASSUMES NO RESPONSIBILITY FOR ADEQUACY OR INTEGRITY OF THE MOUNTING SURFACES OR THE STRUCTURE THAT THE CRANE MAY BE MOUNTED TO. GORBEL INC. WILL NOT BE LIABLE FOR ANY LOSS, INJURY OR DAMAGE TO PERSONS OR PROPERTY, NOR FOR DAMAGES OF ANY KIND, RESULTING FROM THE FAILURE OR DEFECTIVE OPERATION OF ANY MATERIALS NOT SUPPLIED DIRECTLY BY GORBEL INC. BRACING SYSTEMS, IF USED, MUST BE APPROVED BY A LOCAL PROFESSIONAL ENGINEER. BRACING IS NOT REQUIRED BUT IS RECOMMENDED. GROUTING UNDER THE BASEPLATE IS HIGHLY RECOMMENDED.

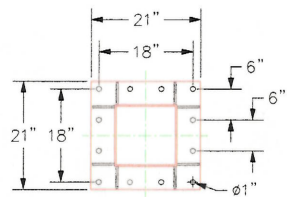


INSPECTION OF THE FLOOR BY A QUALIFIED STRUCTURAL ENGINEER IS REQUIRED TO ENSURE THE FLOOR CAN WITHSTAND THE FOLLOWING LOADS. ALSO, THE CUSTOMER MUST VERIFY WITH THE EPOXY BOLT DISTRIBUTOR THAT THE EPOXY/CONCRETE BOND CAN WITHSTAND THE ANCHOR BOLT LOAD.

OTM = 41.72 K-FT
 AXIAL LOAD = 21.69 KIPS
 ANCHOR BOLT LOAD = 6.8 KIPS/BOLT



*END TRUCKS ARE SN422 WITH WA DRIVE
 *HOOK COVERAGE BASED ON YALE HOIST DEW7 1/2X28RT33D2



12" COLUMN
 BASE PLATE MOUNTING DETAIL

HANGERS MUST BE LOCATED AT A SPLICE JOINT
 DO NOT SCALE FROM DRAWING.
 DIMENSIONS ARE STEEL TO STEEL AND MAY VARY.

CRANE INFORMATION		CLEVELAND TRAMRAIL	
CAPACITY: 7 TONS		By Gorbel Inc.	
BRIDGE OAL: 21'-0 1/4"		600 FISHERS RUN	
BRIDGE RAIL: 5250		P.O. BOX 593	
RUNWAY OAL: 42'-0"		FISHERS, NY 14453-0593	
RUNWAY RAIL: 5700		CT-FSU-40-7-21.0208-42-20	
TOLERANCE: ±1/8		GENERAL ARRANGEMENT	
QUANTITY: 1		BY: MJH	DATE: APR 18, 2016
ID #: JUDYP11558B		LINE: 0	